

November 18, 2021
Uwe Böttcher | Library

Maltfabrikken

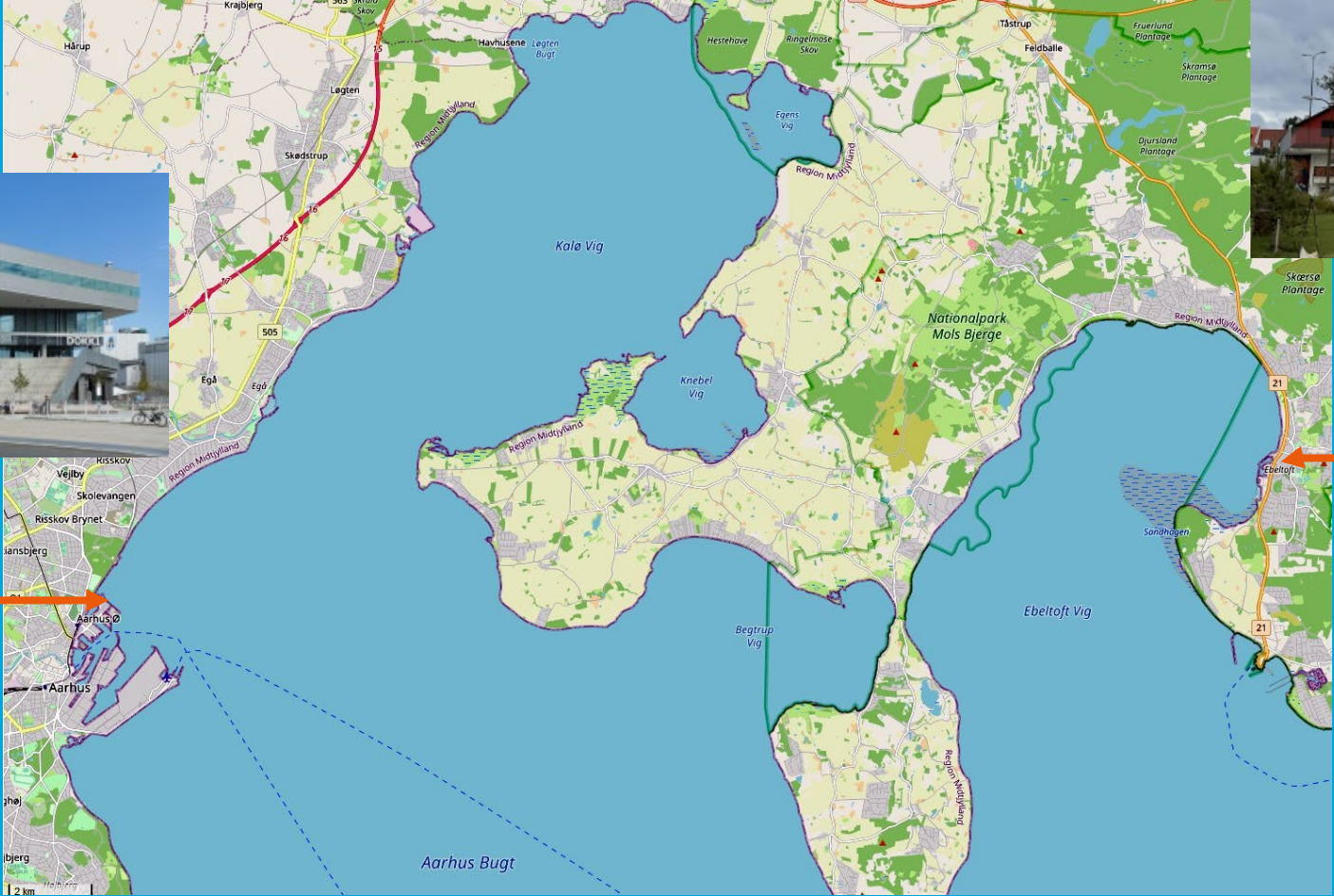
Turning a Lost Place into a Community Hotspot



Once upon a time in Denmark ...



Dokk1, Aarhus

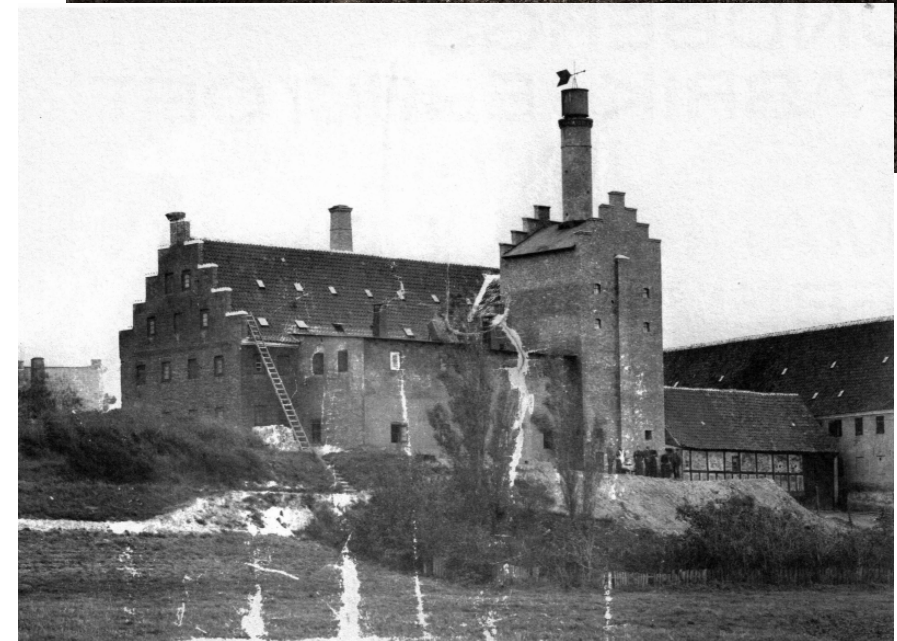


Maltfabrikken,
Ebeltoft

... an industrial hotspot became a lost place ...

S.B. Lundbergs Maltfabrik

- Founded in 1857
- Became one of the largest and most successful companies in the area, second largest malthouse in Denmark
- Important raw material supplier for Danish beer production with a high export share
- Became a joint stock company in 1910
- Long-time family business of the Lundbergs
- Succession and sales problems
- Closed down in 1997
- Lost place 1998-2014



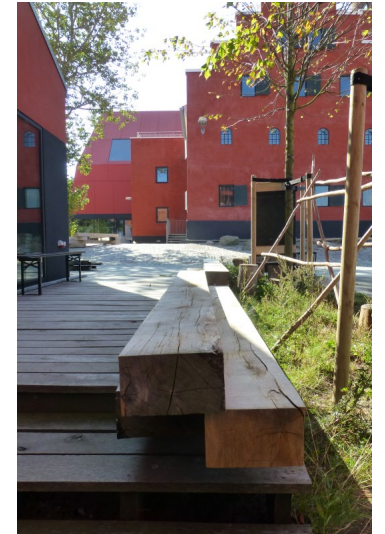
... to rise from the ashes and become a community hotspot

Maltfabrikken – Folkets Fabrik

- 2006 compound sold to local business developer, plans to tear it down and set up a shopping center
- 2010 Initiative 'Bevar Maltfabrikken' (Save Maltfabrikken) by Ebeltoft community members, artist & artisans, start-up entrepreneurs
- 2013 'Den ny Maltfabrik' foundation acquires factory, Ebeltoft town council and Syddjurs commune support the project
- 2013-2019 Architectural competition, extensive remodeling work
- 2020 Official opening of Maltfabrikken on June 26



Maltfabrikken today



Maltfabrikken @ Ebeltoft



Jack-of-all-trades ...

WHAT CAN YOU EXPERIENCE IN MALTFABRIKKEN?

BMA – LIBRARY, MUSEUM, ARCHIVE

: Library, museum, and archive have merged in the three floors of the main building. Here you can move around freely between history, archaeology, literature, and electronic media in a fascinating mix. You will find room for immersion and inspiration, to meet with others, and to play. Try for example the world's probably coolest lending machine Maltazar, find the Malt-mice, or read the daily newspaper with a view over the creek.

VELKOMSTEN – ARRIVAL

: The factory has many entrances, the Arrival is the largest. You find it in the new, red extension to Maltgården – the courtyard. Outside of office hours you can enter with your social security card between 7-23 every day of the week.

UDSTILLINGSRUM – EXHIBITION ROOM

: In the main building (the one with the chimney) you will find the three exhibition rooms Støbesalen, Lille Kølle and Store Kølle. The content varies – from art and local historical exhibitions to markets and much more.

X-RUMMET – THE X-ROOM

: The content in X-rummet changes all the time – from presentations of new projects to art exhibitions and pop-up shops.

FOOD GARAGE

: A place for all sorts of gastronomical display: cooking classes, television-kitchens, team-building, and pop-up takeaway – or maybe your next staff party where you prepare the food together.

LUNDBERGS SPISEHUS/EATERY

: Here you will find the food honest, straight forward and heavenly tasty! The atmosphere is informal and cozy – whether the menu is weekend brunch or wine tasting. Don't forget to buy the home baked bread and cakes to bring home with you.

KULTURLOFT – THE CULTURE LOFT

: On the first floor you will find the venue in the factory and a programme of culture in many genres – world class concerts, shows for children, films, lectures, and artist talks.

BEST VANTAGE POINT IN TOWN

: Take the 122 steps in Trappekøllen and you will arrive at the top of the chimney from where you can enjoy the best view in town – a view over waters and hills.

ART IN THE FACTORY

: Experience art here and there in the factory, especially in Trappekøllen on the way up to the chimney where you will find contemporary Danish art lent by the National Fond of Art.

KABELKLUBBEN – THE CABLE CLUB

: Cannot be found on the map! But it is the glue of people that binds everything together. A network of creative and passionate people, entrepreneurs, newcomers and local players. Want to join us? Read more about the network on our website.

MEETING- AND CONFERENCE ROOMS

: Some of the best rooms in the factory can be booked for staff meetings, family parties and conferences. No matter if you are 200, 20 or just 2 people we have the place that fits your needs.

M8

: The coworking space of Maltfabrikken for self-employed businesspeople, ambitious entrepreneurs and creative minds.

CHAMPAGNE PONY CLUB

: the "pony club" is filled with handpicked, unique designs – let yourself get tempted by ceramics, textiles, prints, and original creations, lamps, small pieces of furniture and much more in the design shop.

YOUTH SPACE RAMPEN

: Rampen belongs to the youth. They run it themselves with a band rehearsal room, café, concerts, communal eatings, lectures and festivals. A couple of 'CSR-youth-on-the-edge-projects' can also be found here during the day.

SKATEPARK

: Just in front of Rampen is the skate park. Everybody is welcome – large and small! Rent a scooter and helmet at Karpenhøj or borrow skateboards at Rampen – and remember to be careful!

KARPENHØJ

: Karpenhøj is a centre for nature interpretation service. Here you can rent bicycles and skating equipment, buy nice outdoor-gear, and book your next wildlife adventure by water or by land.

ART STUDIOS

: Here local and international artists, designers, and architects work.

ART RESIDENCE

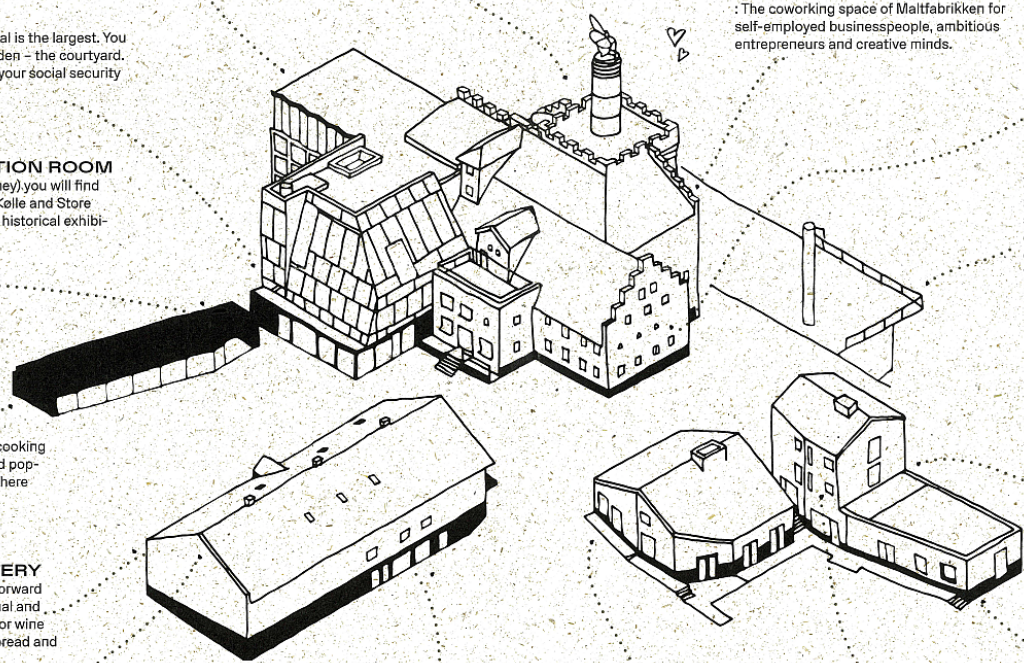
: Villa Lundberg is the factory's artist-home. Artists from all over the world live and work here while they stay in Denmark, e.g. through the art programme Malt AIR.

WORKSHOPS

: A wood-, metal- and digital workshop driven by knowledgeable people from the Workshop Guild of the factory. They arrange open and creative workshop-days, repair-café's, and much more.

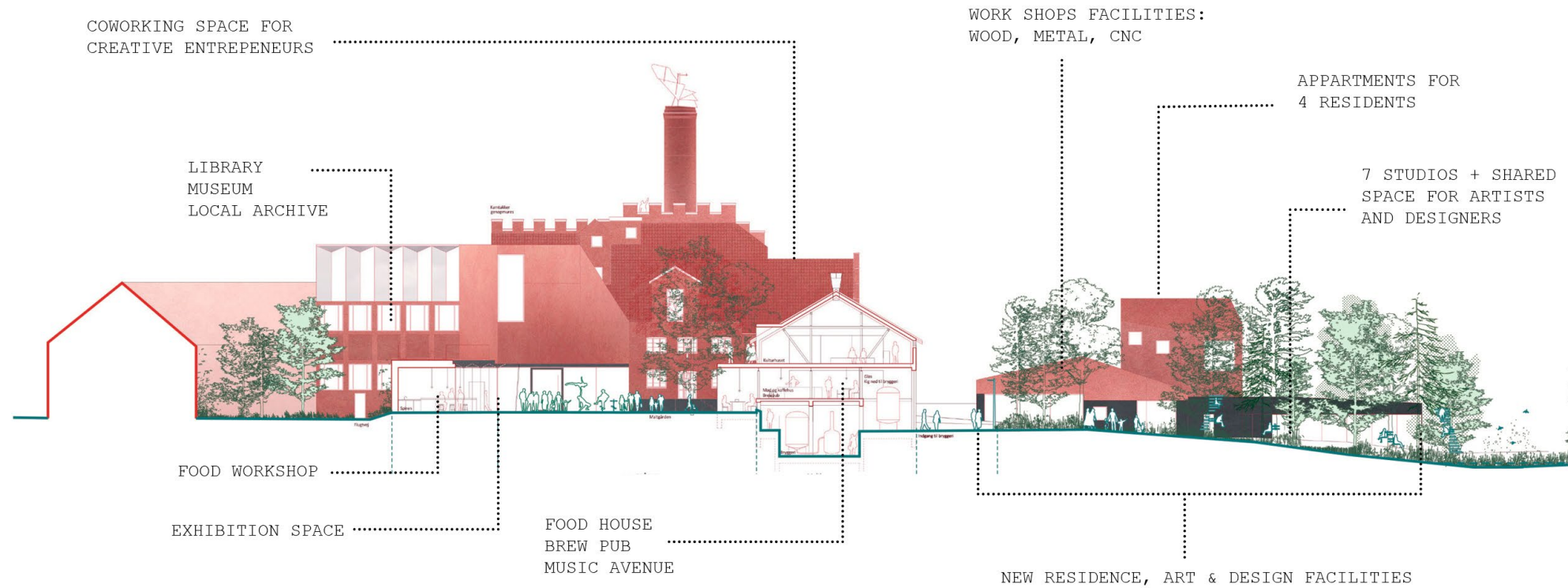
BREWERY + MALT HOUSE + BAR

: The city smells of malt again! In the basement the barley is transformed into malt and malt into brew. The malt janitors produce malt and Ebeltoft Gårdbryggeri is the brew master. Keep an eye on the calendar so that you don't miss out on tastings and live music in the brew bar.



... by design ...

FUNCTIONS IN MALTFABRIKKEN



... at the Heart of the Community



Jack-of- all-trades ...

... regarding Information, Education and History

WHAT CAN YOU EXPERIENCE IN MALTFABRIKKEN?

BMA – LIBRARY, MUSEUM, ARCHIVE

: Library, museum, and archive have merged in the three floors of the main building. Here you can move around freely between history, archaeology, literature, and electronic media in a fascinating mix. You will find room for immersion and inspiration, to meet with others, and to play. Try for example the world's probably coolest lending machine Maltazar, find the Malt-mice, or read the daily newspaper with a view over the creek.

VELKOMSTEN – ARRIVAL

: The factory has many entrances, the Arrival is the largest. You find it in the new, red extension to Maltgården – the courtyard. Outside of office hours you can enter with your social security card between 7-23 every day of the week.

UDSTILLINGSRUM – EXHIBITION ROOM

: In the main building (the one with the chimney) you will find the three exhibition rooms Støbesalen, Lille Kølle and Store Kølle. The content varies – from art and local historical exhibitions to markets and much more.

X-RUMMET – THE X-ROOM

: The content in X-rummet changes all the time – from presentations of new projects to art exhibitions and pop-up shops.

FOOD GARAGE

: A place for all sorts of gastronomical display: cooking classes, television-kitchens, team-building, and pop-up takeaway – or maybe your next staff party where you prepare the food together.

LUNDBERGS SPISEHUS/EATERY

: Here you will find the food honest, straight forward and heavenly tasty! The atmosphere is informal and cozy – whether the menu is weekend brunch or wine tasting. Don't forget to buy the home baked bread and cakes to bring home with you.

KULTURLOFT – THE CULTURE LOFT

: On the first floor you will find the venue in the factory and a programme of culture in many genres – world class concerts, shows for children, films, lectures, and artist talks.

BREWERY + MALT HOUSE + BAR

: The city smells of malt again! In the basement the barley is transformed into malt and malt into brew. The malt janitors produce malt and Ebeltoft Gårdbryggeri is the brew master. Keep an eye on the calendar so that you don't miss out on tastings and live music in the brew bar.

BEST VANTAGE POINT IN TOWN

: Take the 122 steps in Trappekøllen and you will arrive at the top of the chimney from where you can enjoy the best view in town – a view over waters and hills.

ART IN THE FACTORY

: Experience art here and there in the factory, especially in Trappekøllen on the way up to the chimney where you will find contemporary Danish art lent by the National Fond of Art.

MS

: The coworking space of Maltfabrikken for self-employed businesspeople, ambitious entrepreneurs and creative minds.

CHAMPAGNE PONY CLUB

: the "pony club" is filled with handpicked, unique designs – let yourself get tempted by ceramics, textiles, prints, and original creations, lamps, small pieces of furniture and much more in the design shop.

YOUTH SPACE RAMPEN

: Rampen belongs to the youth. They run it themselves with a band rehearsal room, café, concerts, communal eatings, lectures and festivals. A couple of 'CSR-youth-on-the-edge-projects' can also be found here during the day.

SKATEPARK

: Just in front of Rampen is the skate park. Everybody is welcome – large and small. Rent a scooter and helmet at Karpenhøj or borrow skateboards at Rampen – and remember to be careful!

KARPENHØJ

: Karpenhøj is a centre for nature interpretation service. Here you can rent bicycles and skating equipment, buy nice outdoor-gear, and book your next wildlife adventure by water or by land.

ART STUDIOS

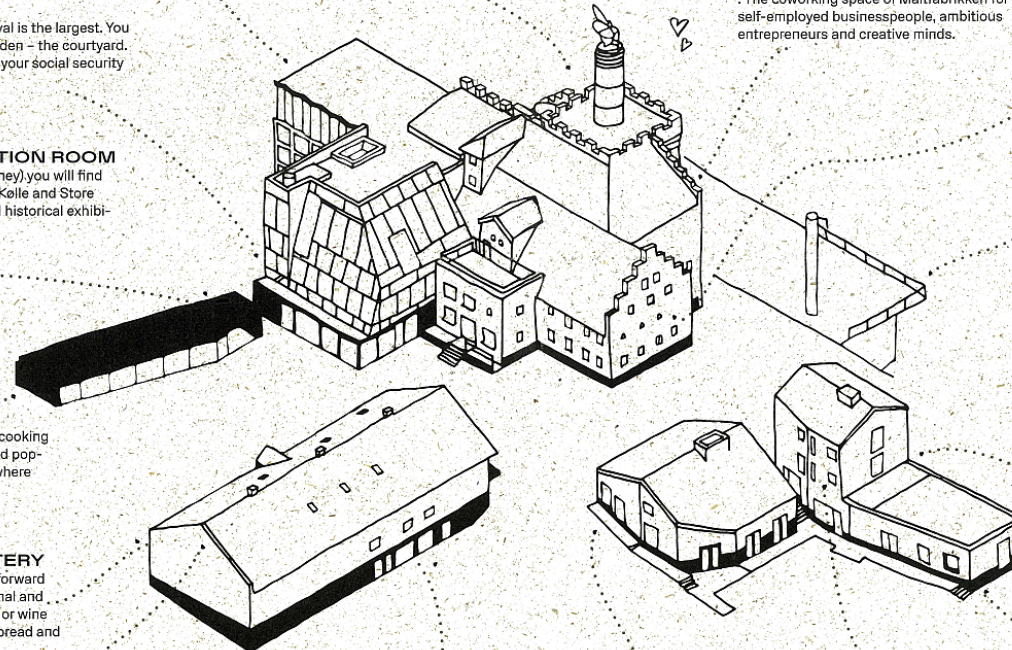
: Here local and international artists, designers, and architects work.

KABELKLUBBEN – THE CABLE CLUB

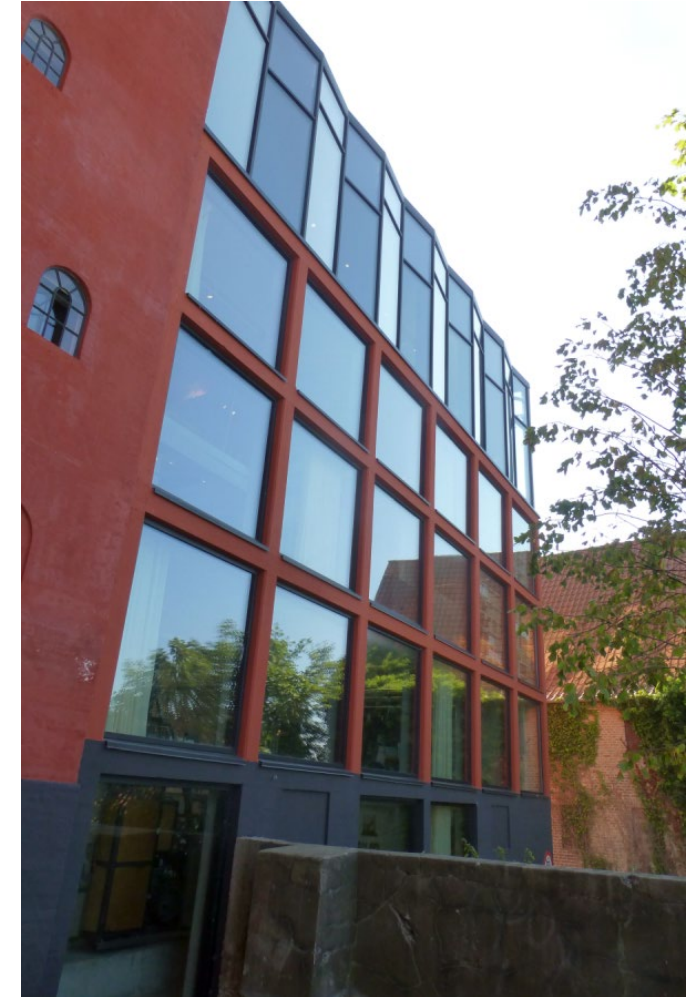
: ... Cannot be found on the map! But it is the glue of people that binds everything together. A network of creative and passionate people, entrepreneurs, newcomers and local players. Want to join us? Read more about the network on our website.

MEETING- AND CONFERENCE ROOMS

: Some of the best rooms in the factory can be booked for staff meetings, family parties and conferences. No matter if you are 200, 20 or just 2 people we have the place that fits your needs.



BMA – Bibliotek Museum Arkiv



BMA – Bibliotek Museum Arkiv



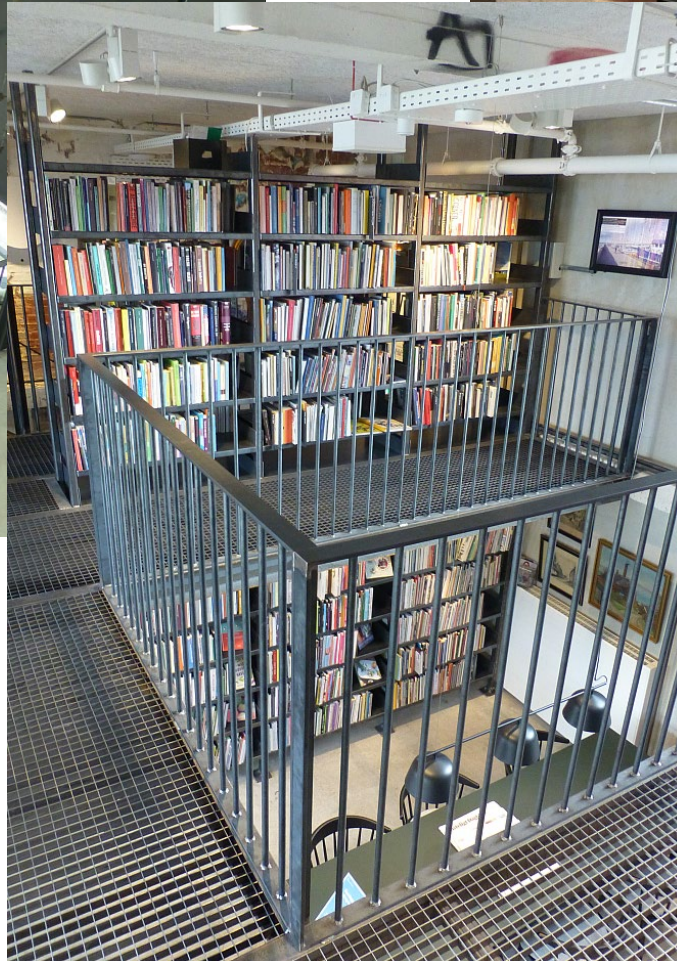
Children's library on ground level



BMA – Bibliotek Museum Arkiv

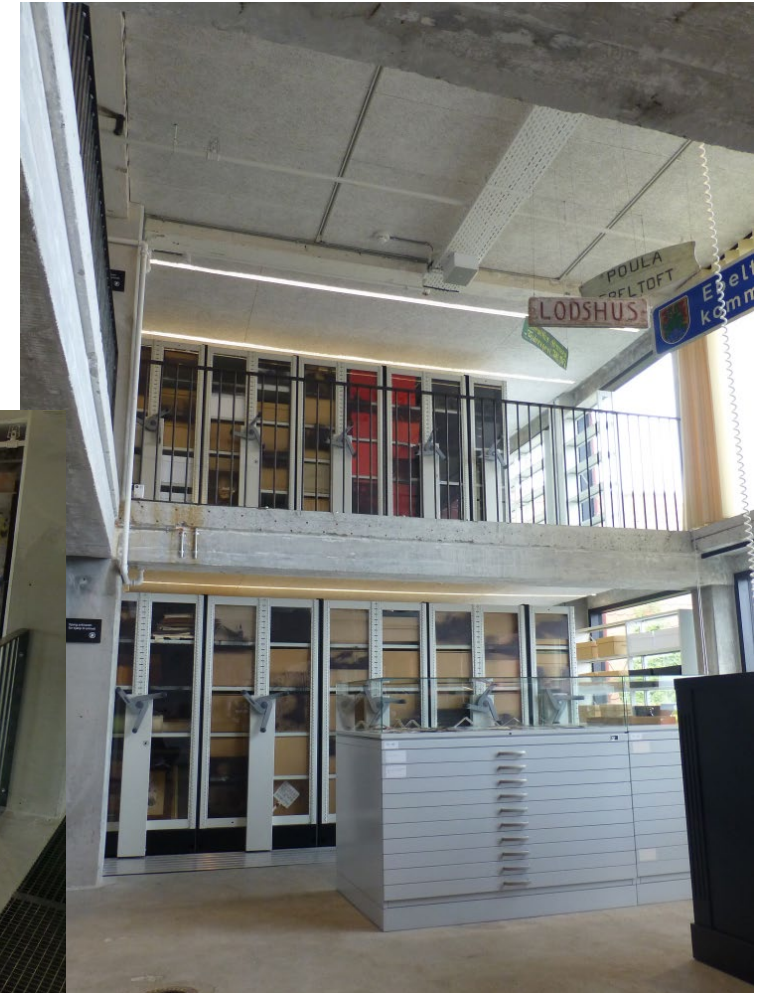


„Lundbergs Kontor“ – First floor ...



... with Archive, Library (Non-fiction and local history) and Museum

BMA – Bibliotek Museum Arkiv

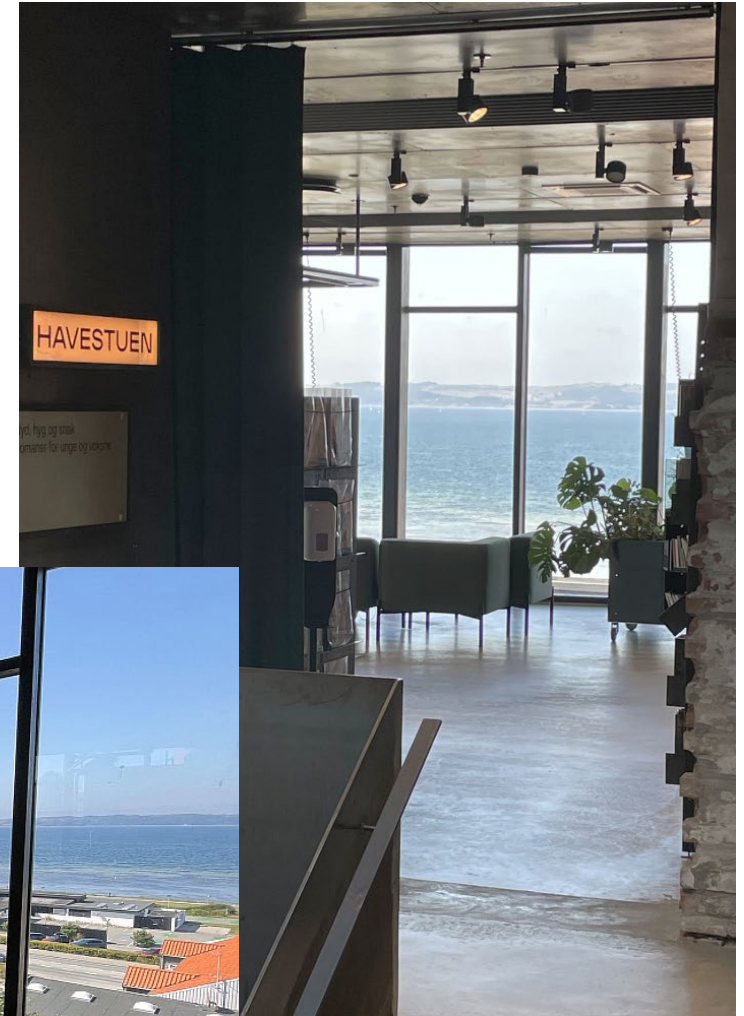


BMA – Bibliotek Museum Arkiv



Library (Fiction all ages and audio material) and Museum

„Havestuen“ –
Second floor



BMA – Bibliotek Museum Arkiv



BMA – Bibliotek Museum Arkiv

Museum manifests itself by showcases neatly integrated into library furniture and old malting machinery



Jack-of-all-trades ...

... regarding Arts and Crafts

WHAT CAN YOU EXPERIENCE IN MALTFABRIKKEN?

BMA – LIBRARY MUSEUM ARCHIVE

: Library, museum, and archive have merged in the three floors of the main building. Here you can move around freely between history, archaeology, literature, and electronic media in a fascinating mix. You will find room for immersion and inspiration, to meet with others, and to play. Try for example the world's probably coolest lending machine Maltazar, find the Malt-mice, or read the daily newspaper with a view over the creek.

VELKOMSTEN – ARRIVAL

: The factory has many entrances, the Arrival is the largest. You find it in the new, red extension to Maltgården – the courtyard. Outside of office hours you can enter with your social security card between 7-23 every day of the week.

UDSTILLINGSRUM – EXHIBITION ROOM

: In the main building (the one with the chimney) you will find the three exhibition rooms Støbesalen, Lille Kølle and Store Kølle. The content varies – from art and local historical exhibitions to markets and much more.

X-RUMMET – THE X-ROOM

: The content in X-rummet changes all the time – from presentations of new projects to art exhibitions and pop-up shops.

FOOD GARAGE

: A place for all sorts of gastronomical display: cooking classes, television-kitchens, team-building, and pop-up takeaway – or maybe your next staff party where you prepare the food together.

LUNDBERGS SPISEHUS/EATERY

: Here you will find the food honest, straight forward and heavenly tasty! The atmosphere is informal and cozy – whether the menu is weekend brunch or wine tasting. Don't forget to buy the home baked bread and cakes to bring home with you.

KULTURLOFT – THE CULTURE LOFT

: On the first floor you will find the venue in the factory and a programme of culture in many genres – world class concerts, shows for children, films, lectures, and artist talks.

BEST VANTAGE POINT IN TOWN

: Take the 122 steps in Trappekøllen and you will arrive at the top of the chimney from where you can enjoy the best view in town – a view over waters and hills.

ART IN THE FACTORY

: Experience art here and there in the factory, especially in Trappekøllen on the way up to the chimney where you will find contemporary Danish art lent by the National Fond of Art.

M8

: The coworking space of Maltfabrikken for self-employed businesspeople, ambitious entrepreneurs and creative minds.

CHAMPAGNE PONY CLUB

: the "pony club" is filled with handpicked, unique designs – let yourself get tempted by ceramics, textiles, prints, and original creations, lamps, small pieces of furniture and much more in the design shop.

YOUTH SPACE RAMPEN

: Rampen belongs to the youth. They run it themselves with a band rehearsal room, café, concerts, communal eatings, lectures and festivals. A couple of 'CSR-youth-on-the-edge-projects' can also be found here during the day.

SKATEPARK

: Just in front of Rampen is the skate park. Everybody is welcome – large and small. Rent a scooter and helmet at Karpenhøj or borrow skateboards at Rampen – and remember to be careful!

KARPENHØJ

: Karpenhøj is a centre for nature interpretation service. Here you can rent bicycles and skating equipment, buy nice outdoor-gear, and book your next wildlife adventure by water or by land.

WORKSHOPS

: A wood-, metal- and digital workshop driven by knowledgeable people from the Workshop Guild of the factory. They arrange open and creative workshop-days, repair-café, and much more.

ART RESIDENCE

: Villa Lundberg is the factory's artist-home. Artists from all over the world live and work here while they stay in Denmark, e.g. through the art programme Malt AIR.

ART STUDIOS

: Here local and international artists, designers, and architects work.

BREWERY + MALT HOUSE + BAR

: The city smells of malt again! In the basement the barley is transformed into malt and malt into brew. The malt janitors produce malt and Ebeltoft Gårdbryggeri is the brew master. Keep an eye on the calendar so that you don't miss out on tastings and live music in the brew bar.

Art Residence & Studios



Villa Lundberg hosting apartments and studios for artists in residence



Craft „Makerspaces“ and Workshops



„Værksted“ – One of two workshops

Jack-of-all-trades ...

... regarding Business and Entrepreneurship

WHAT CAN YOU EXPERIENCE IN MALTFABRIKKEN?

BMA – LIBRARY MUSEUM ARCHIVE

: Library, museum, and archive have merged in the three floors of the main building. Here you can move around freely between history, archaeology, literature, and electronic media in a fascinating mix. You will find room for immersion and inspiration, to meet with others, and to play. Try for example the world's probably coolest lending machine Maltazar, find the Malt-mice, or read the daily newspaper with a view over the creek.

VELKOMSTEN – ARRIVAL

: The factory has many entrances, the Arrival is the largest. You find it in the new, red extension to Maltgården – the courtyard. Outside of office hours you can enter with your social security card between 7-23 every day of the week.

UDSTILLINGSRUM – EXHIBITION ROOM

: In the main building (the one with the chimney) you will find the three exhibition rooms Støbesalen, Lille Kølle and Store Kølle. The content varies – from art and local historical exhibitions to markets and much more.

X-RUMMET – THE X-ROOM

: The content in X-rummet changes all the time – from presentations of new projects to art exhibitions and pop-up shops.

FOOD GARAGE

: A place for all sorts of gastronomical display: cooking classes, television-kitchens, team-building, and pop-up takeaway – or maybe your next staff party where you prepare the food together.

LUNDBERGS SPISEHUS/EATERY

: Here you will find the food honest, straight forward and heavenly tasty! The atmosphere is informal and cozy – whether the menu is weekend brunch or wine tasting. Don't forget to buy the home baked bread and cakes to bring home with you.

KULTURLOFT – THE CULTURE LOFT

: On the first floor you will find the venue in the factory and a programme of culture in many genres – world class concerts, shows for children, films, lectures, and artist talks.

BREWERY + MALT HOUSE + BAR

: The city smells of malt again! In the basement the barley is transformed into malt and malt into brew. The malt janitors produce malt and Ebeltoft Gårdbryggeri is the brew master. Keep an eye on the calendar so that you don't miss out on tastings and live music in the brew bar.

BEST VANTAGE POINT IN TOWN

: Take the 122 steps in Trappekøllen and you will arrive at the top of the chimney from where you can enjoy the best view in town – a view over waters and hills.

ART IN THE FACTORY

: Experience art here and there in the factory, especially in Trappekøllen on the way up to the chimney where you will find contemporary Danish art lent by the National Fond of Art.

MS

: The coworking space of Maltfabrikken for self-employed businesspeople, ambitious entrepreneurs and creative minds.

CHAMPAGNE PONY CLUB

: the "pony club" is filled with handpicked, unique designs – let yourself get tempted by ceramics, textiles, prints, and original creations, lamps, small pieces of furniture and much more in the design shop.

MEETING- AND CONFERENCE ROOMS

: Some of the best rooms in the factory can be booked for staff meetings, family parties and conferences. No matter if you are 200, 20 or just 2 people we have the place that fits your needs.

KABELKLUBBEN – THE CABLE CLUB

: Cannot be found on the map! But it is the glue of people that binds everything together. A network of creative and passionate people, entrepreneurs, newcomers and local players. Want to join us? Read more about the network on our website.

YOUTH SPACE RAMPEN

: Rampen belongs to the youth. They run it themselves with a band rehearsal room, café, concerts, communal eatings, lectures and festivals. A couple of 'CSR-youth-on-the-edge-projects' can also be found here during the day.

SKATEPARK

: Just in front of Rampen is the skate park. Everybody is welcome – large and small. Rent a scooter and helmet at Karpenhøj or borrow skateboards at Rampen – and remember to be careful!

KARPENHØJ

: Karpenhøj is a centre for nature interpretation service. Here you can rent bicycles and skating equipment, buy nice outdoor-gear, and book your next wildlife adventure by water or by land.

WORKSHOPS

: A wood-, metal- and digital workshop driven by knowledgeable people from the Workshop Guild of the factory. They arrange open and creative workshop-days, repair-café, and much more.

ART RESIDENCE

: Villa Lundberg is the factory's artist-home. Artists from all over the world live and work here while they stay in Denmark, e.g. through the art programme Malt AIR.

ART STUDIOS

: Here local and international artists, designers, and architects work.

Stores and Pop-up Shops

Malt house,
brewery,
restaurant



Trekking store



M8 – Coworking space



Jack-of-all-trades ...

... regarding Recreation, Leisure and Community

WHAT CAN YOU EXPERIENCE IN MALTFABRIKKEN?

BMA – LIBRARY, MUSEUM, ARCHIVE

: Library, museum, and archive have merged in the three floors of the main building. Here you can move around freely between history, archaeology, literature, and electronic media in a fascinating mix. You will find room for immersion and inspiration, to meet with others, and to play. Try for example the world's probably coolest lending machine Maltazar, find the Malt-mice, or read the daily newspaper with a view over the creek.

VELKOMSTEN – ARRIVAL

: The factory has many entrances, the Arrival is the largest. You find it in the new, red extension to Maltgården – the courtyard. Outside of office hours you can enter with your social security card between 7-23 every day of the week.

UDSTILLINGSRUM – EXHIBITION ROOM

: In the main building (the one with the chimney) you will find the three exhibition rooms Støbesalen, Lille Kølle and Store Kølle. The content varies – from art and local historical exhibitions to markets and much more.

X-RUMMET – THE X-ROOM

: The content in X-rummet changes all the time – from presentations of new projects to art exhibitions and pop-up shops.

FOOD GARAGE

: A place for all sorts of gastronomical display: cooking classes, television-kitchens, team-building, and pop-up takeaway – or maybe your next staff party where you prepare the food together.

LUNDBERGS SPISEHUS/EATERY

: Here you will find the food honest, straight forward and heavenly tasty! The atmosphere is informal and cozy – whether the menu is weekend brunch or wine tasting. Don't forget to buy the home baked bread and cakes to bring home with you.

KULTURLOFT – THE CULTURE LOFT

: On the first floor you will find the venue in the factory and a programme of culture in many genres – world class concerts, shows for children, films, lectures, and artist talks.

BEST VANTAGE POINT IN TOWN

: Take the 122 steps in Trappekøllen and you will arrive at the top of the chimney from where you can enjoy the best view in town – a view over waters and hills.

ART IN THE FACTORY

: Experience art here and there in the factory, especially in Trappekøllen on the way up to the chimney where you will find contemporary Danish art lent by the National Fond of Art.

MS

: The coworking space of Maltfabrikken for self-employed businesspeople, ambitious entrepreneurs and creative minds.

CHAMPAGNE PONY CLUB

: the "pony club" is filled with handpicked, unique designs – let yourself get tempted by ceramics, textiles, prints, and original creations, lamps, small pieces of furniture and much more in the design shop.

YOUTH SPACE RAMPEN

: Rampen belongs to the youth. They run it themselves with a band rehearsal room, café, concerts, communal eatings, lectures and festivals. A couple of 'CSR-youth-on-the-edge-projects' can also be found here during the day.

SKATEPARK

: Just in front of Rampen is the skate park. Everybody is welcome – large and small! Rent a scooter and helmet at Karpenhøj or borrow skateboards at Rampen – and remember to be careful!

KARPENHØJ

: Karpenhøj is a centre for nature interpretation service. Here you can rent bicycles and skating equipment, buy nice outdoor-gear, and book your next wildlife adventure by water or by land.

WORKSHOPS

: A wood-, metal- and digital workshop driven by knowledgeable people from the Workshop Guild of the factory. They arrange open and creative workshop-days, repair-café, and much more.

ART RESIDENCE

: Villa Lundberg is the factory's artist-home. Artists from all over the world live and work here while they stay in Denmark, e.g. through the art programme Malt AIR.

ART STUDIOS

: Here local and international artists, designers, and architects work.

BREWERY + MALT HOUSE + BAR

: The city smells of malt again! In the basement the barley is transformed into malt and malt into brew. The malt janitors produce malt and Ebeltoft Gårdbrysteri is the brew master. Keep an eye on the calendar so that you don't miss out on tastings and live music in the brew bar.

Recreational Areas



Jack-of- all-trades ...

... regarding Tourism

WHAT CAN YOU EXPERIENCE IN MALTFABRIKKEN?

BMA – LIBRARY, MUSEUM, ARCHIVE

: Library, museum, and archive have merged in the three floors of the main building. Here you can move around freely between history, archaeology, literature, and electronic media in a fascinating mix. You will find room for immersion and inspiration, to meet with others, and to play. Try for example the world's probably coolest lending machine Maltazar, find the Malt-mice, or read the daily newspaper with a view over the creek.

VELKOMSTEN – ARRIVAL

: The factory has many entrances, the Arrival is the largest. You find it in the new, red extension to Maltgården – the courtyard. Outside of office hours you can enter with your social security card between 7-23 every day of the week.

UDSTILLINGSRUM – EXHIBITION ROOM

: In the main building (the one with the chimney) you will find the three exhibition rooms Støbesalen, Lille Kølle and Store Kølle. The content varies – from art and local historical exhibitions to markets and much more.

X-RUMMET – THE X-ROOM

: The content in X-rummet changes all the time – from presentations of new projects to art exhibitions and pop-up shops.

FOOD GARAGE

: A place for all sorts of gastronomical display: cooking classes, television-kitchens, team-building, and pop-up takeaway – or maybe your next staff party where you prepare the food together.

LUNDBERGS SPISEHUS/EATERY

: Here you will find the food honest, straight forward and heavenly tasty! The atmosphere is informal and cozy – whether the menu is weekend brunch or wine tasting. Don't forget to buy the home baked bread and cakes to bring home with you.

KULTURLOFT – THE CULTURE LOFT

: On the first floor you will find the venue in the factory and a programme of culture in many genres – world class concerts, shows for children, films, lectures, and artist talks.

BEST VANTAGE POINT IN TOWN

: Take the 122 steps in Trappekøllen and you will arrive at the top of the chimney from where you can enjoy the best view in town – a view over waters and hills.

ART IN THE FACTORY

: Experience art here and there in the factory, especially in Trappekøllen on the way up to the chimney where you will find contemporary Danish art lent by the National Fond of Art.

KABELKLUBBEN – THE CABLE CLUB

: ... Cannot be found on the map! But it is the glue of people that binds everything together. A network of creative and passionate people, entrepreneurs, newcomers and local players. Want to join us? Read more about the network on our website.

MEETING- AND CONFERENCE ROOMS

: Some of the best rooms in the factory can be booked for staff meetings, family parties and conferences. No matter if you are 200, 20 or just 2 people we have the place that fits your needs.

M8

: The coworking space of Maltfabrikken for self-employed businesspeople, ambitious entrepreneurs and creative minds.

CHAMPAGNE PONY CLUB

: the "pony club" is filled with handpicked, unique designs – let yourself get tempted by ceramics, textiles, prints, and original creations, lamps, small pieces of furniture and much more in the design shop.

YOUTH SPACE RAMPEN

: Rampen belongs to the youth. They run it themselves with a band rehearsal room, café, concerts, communal eatings, lectures and festivals. A couple of 'CSR-youth-on-the-edge-projects' can also be found here during the day.

SKATEPARK

: Just in front of Rampen is the skate park. Everybody is welcome – large and small! Rent a scooter and helmet at Karpenhøj or borrow skateboards at Rampen – and remember to be careful!

KARPENHØJ

: Karpenhøj is a centre for nature interpretation service. Here you can rent bicycles and skating equipment, buy nice outdoor-gear, and book your next wildlife adventure by water or by land.

WORKSHOPS

: A wood-, metal- and digital workshop driven by knowledgeable people from the Workshop Guild of the factory. They arrange open and creative workshop-days, repair-café, and much more.

ART RESIDENCE

: Villa Lundberg is the factory's artist-home. Artists from all over the world live and work here while they stay in Denmark, e.g. through the art programme Malt AIR.

ART STUDIOS

: Here local and international artists, designers, and architects work.

BREWERY + MALT HOUSE + BAR

: The city smells of malt again! In the basement the barley is transformed into malt and malt into brew. The malt janitors produce malt and Ebeltoft Gårdbryggeri is the brew master. Keep an eye on the calendar so that you don't miss out on tastings and live music in the brew bar.

Definitely the „best vantage point ...



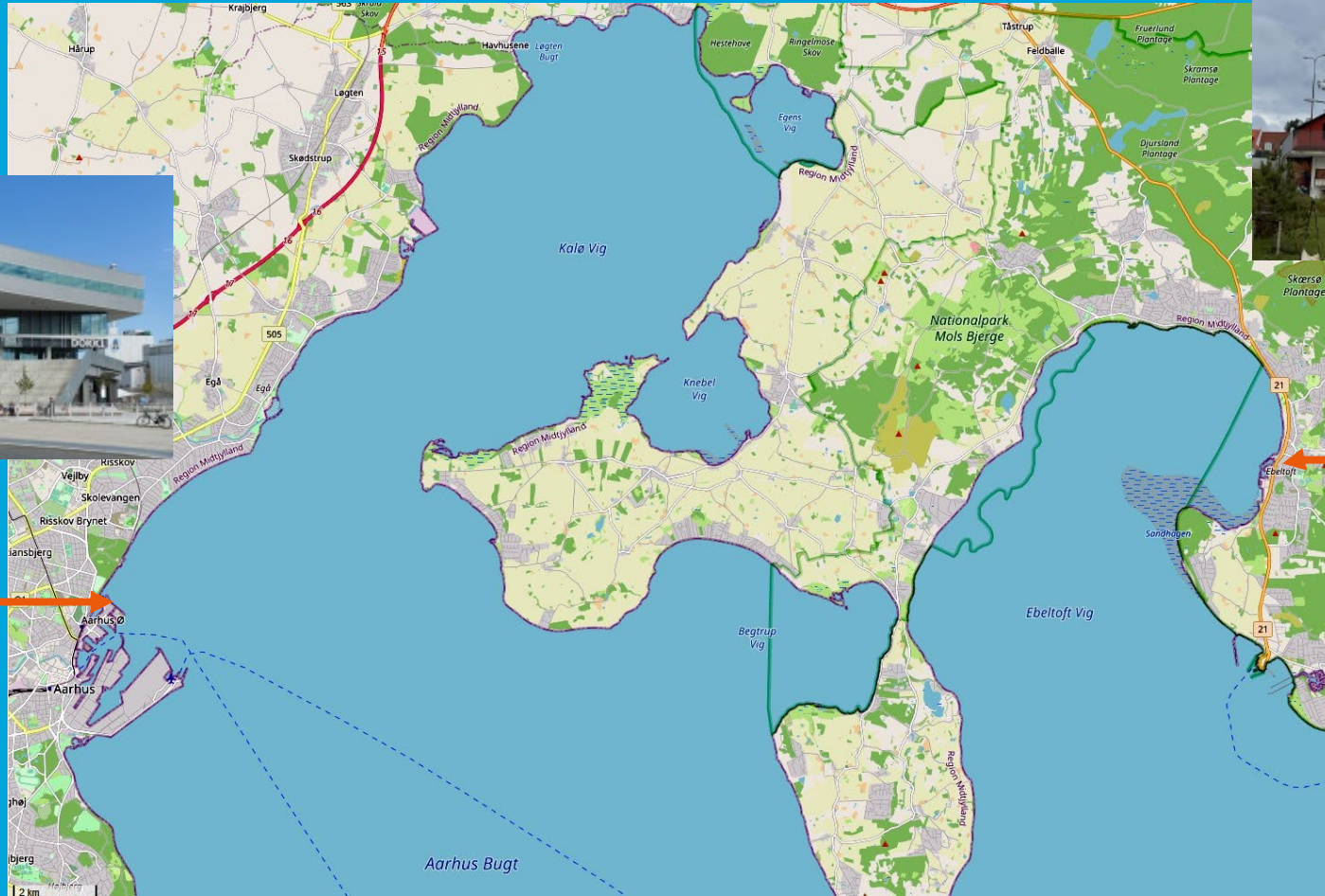
... in town“



Similarities and Differences



Dokk1, Aarhus



Maltfabrikken,
Ebeltoft

Thank you!

Visit ...

<https://maltfabrikken.dk>

for more information

Maltfabrikken – Folkets Fabrik

Maltvej 4-12

8400 Ebeltoft

Danmark

N 56° 12' 2.859" E 10° 40' 43.524"

for a personal impression



Picture credits

Unless otherwise indicated are all pictures by Uwe Böttcher

Title slide:

<https://realdania.dk/projekter/maltfabrikken-i-ebeltoft>

Slide 2 “Once upon a time ...” and slide 29 “Similarities and Differences”:

<https://en.wikipedia.org/wiki/Dokk1>

<https://www.openstreetmap.org>

Slide 3 „... an industrial hotspot ...“:

https://da.wikipedia.org/wiki/S.B._Lundbergs_Maltfabrik

Folkets Fabrik. – 2021. – p. 52

Slide 4: „... to rise from the ashes ...“

Maltfabrikken - Creating the People’s Factory in Denmark.

– 2021. – p. 15

Maltfabrikken – Folkets Fabrik. – 2021. – p. 38

Slide 5: „Maltfabrikken today“

<https://realdania.dk/projekter/maltfabrikken-i-ebeltoft>

Slide 6 „Maltfabrikken @ Ebeltoft“

<https://www.ebeltoft.dk>

Slide 7: „Jack-of-all-trades ...“ and all copies at slides 10, 18, 21, 24 and 26:

Welcome to Maltfabrikken. – [2020]. – p. 2

Slide 8 „... by design ...“ and slide 9: „... at the Heart of the Community“

<http://www.maltair.dk/residency>

Slide 19: „Art Residence & Studios“

<http://www.maltair.dk/residency>

Slide 25: „Recreational Areas“

<https://realdania.dk/projekter/maltfabrikken-i-ebeltoft>

All links last accessed: 16 Nov 2021

Recommended Reading

- Maltfabrikken – Din, min og vores fabrik
<https://maltfabrikken.dk>
Last accessed: 15 Nov 2021
- S.B. Lundbergs Maltfabrik (Wikipedia)
https://da.wikipedia.org/wiki/S.B._Lundbergs_Maltfabrik
Last accessed: 15 Nov 2021
- Maltfabrikken – Folkets Fabrik = The People's Factory
Copenhagen: Arkitektens Forlag, 2021
ISBN 978-87-7407-443-4
- Welcome to Maltfabrikken (Flyer)
[Ebeltoft]: Maltfabrikken, [2020]
- Maltfabrikken - Creating the People's Factory in Denmark
<https://teh.net/wp-content/uploads/2021/03/Creating-the-Peoples-Factory-in-Denmark.pdf>
Last accessed: 15 Nov 2021

- Ebeltoft (Wikipedia)
<https://en.wikipedia.org/wiki/Ebeltoft>
<https://da.wikipedia.org/wiki/Ebeltoft>
Last accessed: 15 Nov 2021
- Dokk1 (Wikipedia)
<https://en.wikipedia.org/wiki/Dokk1>
Last accessed: 15 Nov 2021



Author Contact



WHU – Otto Beisheim School of Management

Uwe Böttcher
Director Library

ORCID 0000-0001-6516-6229

WHU – Otto Beisheim School of Management
Campus Vallendar, Burgplatz 2, 56179 Vallendar, Germany

Tel.: +49 (0)261-6509-550

Fax: +49 (0)261-6509-559

uwe.boettcher@whu.edu

www.whu.edu

This document is confidential and designed only for the use of the addressee. The illustrations are meant to be the basis for discussion and are incomplete without any verbal explanation. The distribution of this document to parties other than the addressee and the release of embodied information is not allowed without prior permission by WHU.