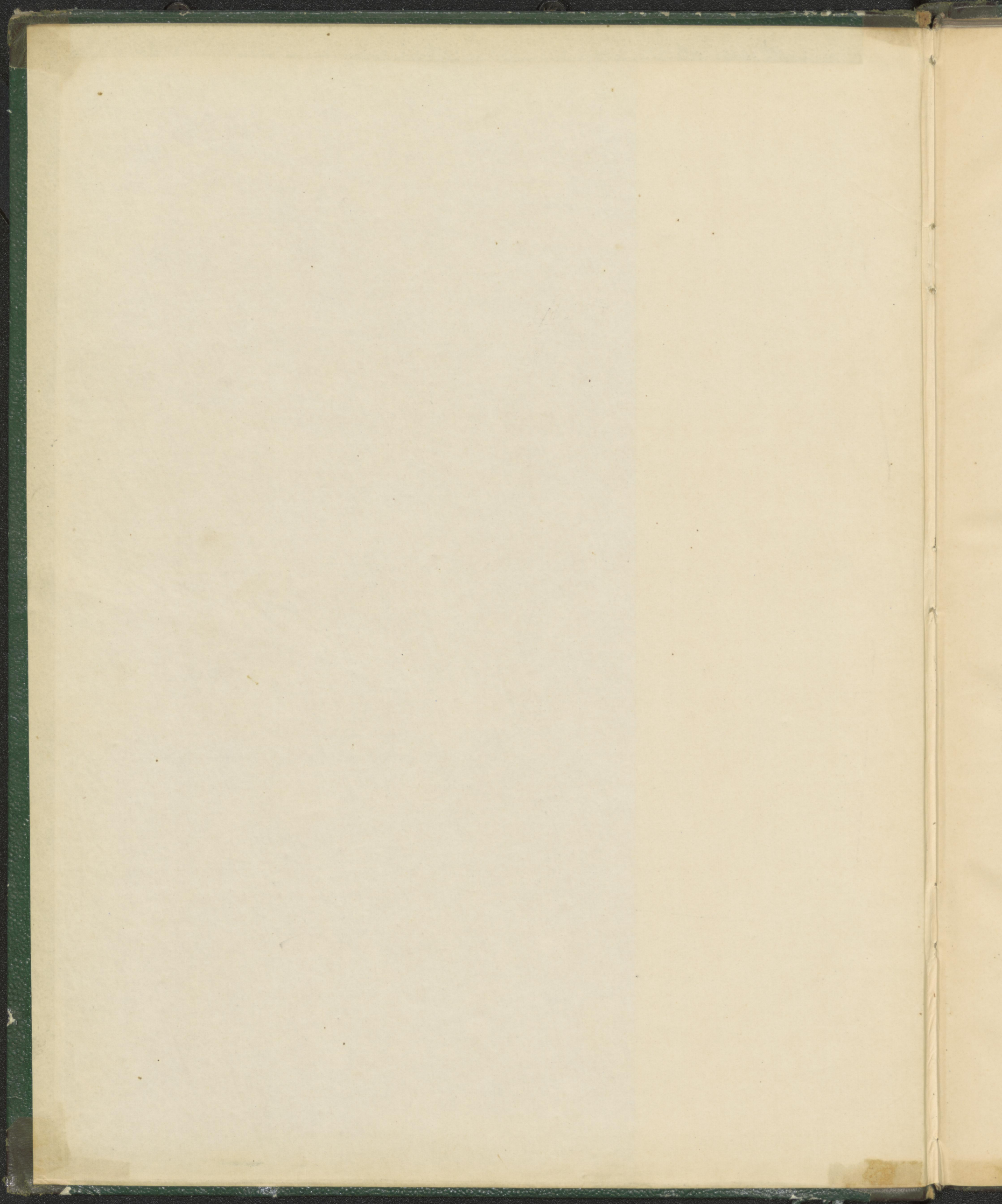


HSB 2 - SMG

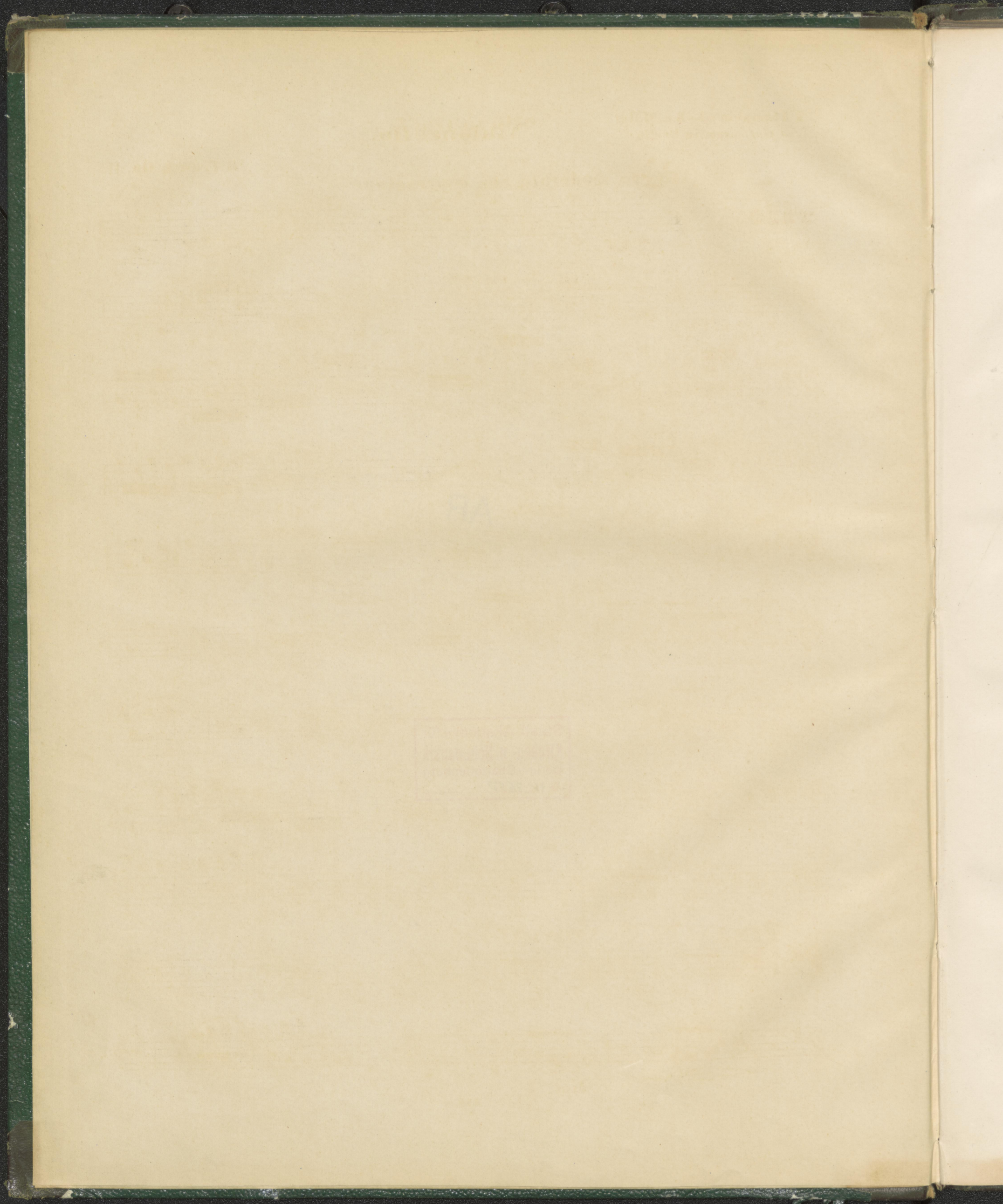
7628 -
RA 7634
C.S.J

J. Ammer



AR

Staatl. Akademie für
Kirchen- u. Schulmusik
Berlin-Charlottenburg
№ IV 7650



VIOLONCELLO.

R. Würst, Op. 5.

Allegro con moto.

TRIO.

con dolore.

a tempo. 9

cresc. poco riten. mf

dolce.

arco. cresc. f

tr

pizz. p

f dim. p

poco riten.

a tempo. 1

pp

poco a poco cre - -

VIOLONCELLO.

scendo *f*

dim. *pp*

p 7

3

f poco riten.

a tempo. *mf* *f*

dol. 4

dolciss.

tr Piu mosso. poco rallent. a tempo.

tr sempre cre - scen - do.

ff

VIOLONCELLO.

ADAGIO.

8
p

cresc.

f *dim.* *p*

4 *cresc.* *f*

3 *pp*

2 *pp* *pizz.* *arco.* *p*

pizz.

arco *poco*

a *poco* *cresc.* *dim.* *p* *pp*

dolce.

1

VIOLONCELLO.

cresc. *f*

pizz. *pp*

poco ritemto. *arco.*

Allegro con brio.

MENUETTO.

ff

p *f*

dim. p *cresc.* *f*

ff *tr* *mf cresc.*

ff

TRIO.
Più lento.

dolce e semplice.

pizz.

VOLONCELLO.

First musical staff in bass clef with a key signature of one sharp (F#). It begins with a dynamic marking of *f* and contains a melodic line with various note values and rests.

Second musical staff in bass clef, continuing the melodic line from the first staff. It features a dynamic marking of *dim.* towards the end of the staff.

Third musical staff in bass clef, starting with a dynamic marking of *p*. It includes a first ending bracket labeled '1'.

Fourth musical staff in bass clef, featuring a first ending bracket labeled '1' and a second ending bracket labeled '2'.

Fifth musical staff in bass clef, marked *Tempo 1^o* and *4*. It begins with a dynamic marking of *ff* and includes a second ending bracket labeled '2'.

Sixth musical staff in bass clef, starting with a dynamic marking of *f* and ending with *dim. p*.

Seventh musical staff in bass clef, marked *cresc.* and *f*. It includes a first ending bracket labeled '1'.

Eighth musical staff in bass clef, marked *ff* and *tr*. It features a dynamic marking of *mf cresc. f ff*.

Ninth musical staff in bass clef, marked *Più lento.* and *1*. It begins with a dynamic marking of *ff* and includes a first ending bracket labeled '1'.

Tenth musical staff in bass clef, marked *1* and *2*. It starts with a dynamic marking of *pp*.

Eleventh musical staff in bass clef, marked *cresc. e string.* and *f*. It includes a first ending bracket labeled '1'.

VIOLONCELLO.

Allegro vivace.

FINALE.

10 *p* poco a poco crescendo.

f *p* *f* *p*

pizz. *arco.* *tr.*

f *f*

dolce.

f

f

f

p

dolce. *cresc.* *f*

p *tr.*

cresc. *f*

poco riten.

VIOLONCELLO.

a tempo. *pizz.*

p *pp* *f* *p* *f* *p* *f* *pp* *cresc.* *ff*

tr *tr* *tr* *tr* *tr* *tr* *tr* *tr* *tr* *tr* *tr* *tr* *tr* *tr*

3 2 1 4 6

1 2 1 4 6

1 2 1 4 6

1 2 3

Fine.

