



Natural gas savings in Germany during the 2022 energy crisis

May 2023

Oliver Ruhnau, Clemens Stiewe, Jarusch Muessel,
Lion Hirth

This version of the article has been accepted for publication, after peer review (when applicable) and is subject to Springer Nature's [AM terms of use](#), but is not the Version of Record and does not reflect post-acceptance improvements, or any corrections. The Version of Record is available online at: <https://doi.org/10.1038/s41560-023-01260-5>

Natural gas savings in Germany during the 2022 energy crisis

Oliver Ruhnau^{1,*}, Clemens Stiewe¹, Jarusch Muessel^{1,2}, Lion Hirth^{1,3}

¹ Hertie School, Centre for Sustainability, Berlin, Germany

² Potsdam Institute for Climate Impact Research, Potsdam, Germany

³ Neon Neue Energieökonomik GmbH, Berlin, Germany

*e-mail: ruhnau@hertie-school.org

Russia curbed its natural gas supply to Europe in 2021 and 2022, creating a grave energy crisis. This paper empirically estimates the crisis response of natural gas consumers in Germany—for decades the largest export market for Russian gas. Using a multiple regression model, we estimate the response of small consumers, industry, and power stations separately, controlling for the non-linear temperature-heating relationship, seasonality, and trends. We find significant and substantial gas savings for all consumer groups, but with differences in timing and size. For instance, industry started reducing consumption as early as September 2021, while small consumers saved substantially only since March 2022. Across all sectors, gas consumption during the second half of 2022 was 23% below the temperature-adjusted baseline. We discuss the drivers behind these savings and draw conclusions on their role in coping with the crisis.

Europe is amid the most severe energy crisis since the oil price shock of 1973. Since mid-2021, spot prices of natural gas have been on a steep rise, reaching levels of 100–200 €/MWh in 2022. This is about ten times the long-term pre-Covid price levels of 15–20 €/MWh. Specific events, like Russia’s invasion of Ukraine on 24 February 2022 and Russia’s announcement of closing the Nord Stream 1 pipeline on 19 August 2022¹, led prices to spike up to 227 and 339 €/MWh, respectively. Meanwhile, the average gas price paid by German industry has increased six-fold when it peaked in September 2022, somewhat lagged and dampened by long-term contracts. Average German residential retail prices increased more than two-fold between January and November 2022, before a political intervention substantially reduced households’ energy bills in December 2022 (see Figure 1).

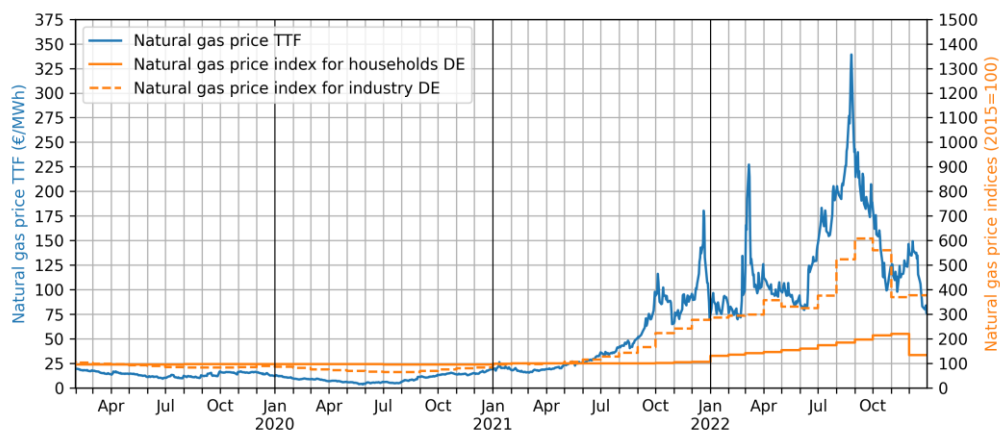


Figure 1: Prices of natural gas at the European wholesale and at the German retail market. Wholesale prices from the Title Transfer Facility (TTF) spot market; retail prices are indexed average prices for natural gas paid by German (DE) households and industrial consumers according to the Federal Statistical Office (DESTATIS). The indexes are normalized to 100 in 2015. Month names are abbreviated.

While the post-pandemic recovery has driven up energy prices around the world, the most important driver of European natural gas prices has been Russia's reduced supply. Even before Russia invaded Ukraine, Russia's Gazprom avoided filling its European gas storages during 2021 and stopped supplying the spot market in the fall of the same year. Starting in the winter, long-term contracts with individual countries and firms were no longer supplied either. By September 2022, imports from Russia to Germany via the Nord Stream 1 pipeline had ceased completely. With domestic European gas supply being limited, Europe turned to liquified natural gas (LNG) as a substitute, but global LNG markets are tight, and European import terminal capacity is limited². As a result, reducing gas consumption has become key to European security of energy supply.

Previous non-academic surveys among German and European households find that every second to third respondent reported saving energy in response to the 2022 crisis (refs.³⁻⁵, Supplementary Table 1 provides a summary). These surveys support the hypothesis of energy savings by households and provide insight into the motivation behind it. Noteworthy, some respondents mentioned independence from Russian gas as the main driver of energy savings, in addition to increasing energy prices. However, in the context of studying environmentally motivated energy savings, the validity of self-reported measurements has often been questioned (ref.⁶ provides a review). Also, the surveys cannot be used to estimate the magnitude of energy savings resulting from the indicated behavioral changes. Similarly, energy-intensive industries have been self-reporting production cuts since autumn 2021, but these insights cannot be translated into how much natural gas has been saved in the industry as a whole (see our collection of press releases in ref.⁷).

Moreover, many existing analyses of the current energy crisis reported reduced natural gas consumption based on comparing current with last year's consumption⁸⁻¹¹. Most importantly, these calculations do not control for temperature and hence cannot distinguish between savings in response to the crisis and the effect of stochastic weather variations. While more elaborate models have been used to analyze energy demand before (e.g., refs.¹²⁻¹⁵), previous analyses of the current crisis methodically lag behind these earlier studies. Meanwhile, findings of earlier studies may be complemented with more sophisticated analysis on the current crisis, given the extraordinary size of the observed supply shock.

The aim of the present article is to provide timely evidence on reductions in gas consumption in the current energy crisis. We use multiple near-time datasets and an econometric model that allows us to control for confounders and to identify the change in natural gas consumption *as a response to the crisis*. Such response could be driven by rising prices, expected future price rises, media attention for energy topics, awareness of energy issues and saving options, or, in the case of households, by ethical considerations since the Russian invasion of Ukraine on 24 February 2022. We apply our model to Germany, which is an interesting case study as it is the largest export market for Russian natural gas. Gas savings in Germany can therefore make a substantial contribution to solving the crisis at a European level. Furthermore, natural gas plays an essential role in Germany's industrial production as well as space heating. If Germany purchased its annual natural gas consumption of close to 1,000 TWh at wholesale prices of 200€/MWh, the increase in the gas bill corresponded to about 5% of gross domestic product (3.57 trillion € in 2021).

We find a significant and substantial crisis response across consumer groups. German industry started to reduce consumption by 4% as early as in September 2021 and steadily increased its savings up to 27% in October 2022. Small consumers, including households, started to respond substantially only in March 2022. The temporal pattern of their savings follows the seasonality of heating demand, with relative savings peaking in September 2022 at 28%. Savings in the power sector are somewhat more volatile and not only driven by reduced Russian gas supply. Across all sectors and on average over the

second half of 2022, gas consumption was reduced by 23%. Although we estimate the effect of the crisis event and cannot disentangle the causal effect of prices from other potential drivers such as public attention, we show that the identified changes in natural gas consumption correlate with increasing prices for natural gas. This suggests that prices are at least one of several effective means of incentivizing gas savings. For public policy, this implies that energy subsidies, many of which have been introduced to mitigate the crisis, will drive up natural gas consumption, which will then further inflate prices.

The estimated reduction in natural gas consumption

We estimate the reduction in the aggregated German natural gas consumption of small, industrial, and power sector consumers, respectively. Sectoral gas consumption data was gathered from the German market operator Trading Hub Europe (THE) and the German statistical office, and we estimate three separate regression models with monthly dummy variables from September 2021 to December 2022 to identify a potential crisis response. Distinguishing these three groups of consumers is informative, as it turns out that their response to the energy crises has been very different.

The main challenge for identifying a natural gas savings of small and industrial consumers is related to the fundamental importance of temperature-dependent space heating. To account for this, we carefully model the non-linear relationship between spatially resolved temperature data and the national space heating demand on the bases of simulated heating demand profiles. The simulation is based on “standard load profiles” from the German gas industry and accounts for the characteristics of the national building stock (like insulation) and pre-crisis consumer behavior. We also control for annual seasonality and time trends (see Methods for details). We deliberately do not include prices in our model to avoid problems with endogeneity¹⁶ and measurement error (see Supplementary Note 2). However, we provide descriptive evidence on the relationship between gas savings and prices and discuss other potential drivers of the crisis response further below.

Figure 2 displays the estimated monthly crisis responses of small, industrial, and power sector consumers (Supplementary Table 3 provides the numerical results, and Supplementary Note 4 provides a comparison with the pre-crisis residuals). The estimates can be interpreted as a change in natural gas consumption of these consumer groups compared to the counterfactual baseline consumption, that is, what would have been expected without a crisis response. We find that small consumers significantly reduced consumption from March 2022 onwards. Meanwhile, a significant response of industrial consumption started as early as September 2021 and increased over time, except for November 2021. Gas consumption in the power sector was also reduced in most months since September 2021 but without an obvious pattern. Across all sectors, we estimate a maximum absolute reduction of 25 TWh per month in November 2022. We will discuss the three sectors in turn.

Households and small businesses show a salient reduction from March 2022 onwards. This late response compared to other consumer groups is in line with expectation since small consumers typically have retail contracts with fixed prices over longer time spans such as a year. In other words, most consumers in this segment were not exposed to rising wholesale prices they could respond to (see Figure 1). The abrupt reduction in residential consumption in March 2022, however, cannot well be explained by steadily increasing household prices. By contrast, the stark reduction after Russia’s invasion of Ukraine on February 24 may be driven by increased attention (see Supplementary Note 5) and ethical concerns in line with refs.³⁻⁵.

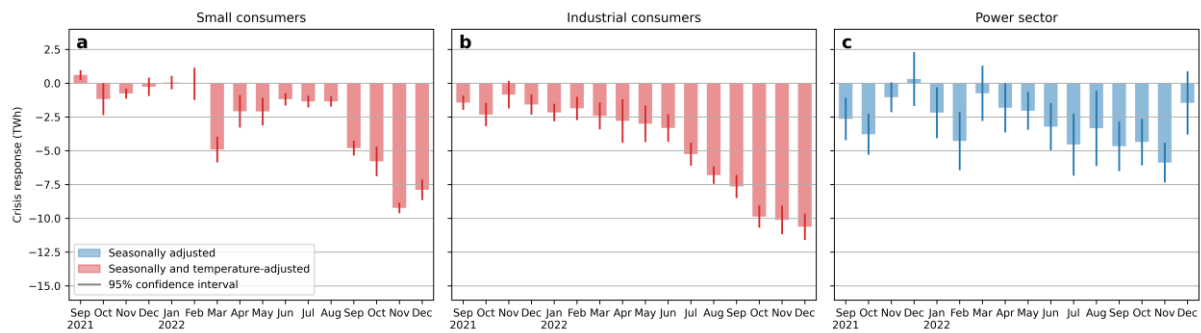


Figure 2: Estimated monthly crisis response of natural gas consumption

We distinguish between (a) small consumers, (b) industrial consumers, and (c) the power sector. For the power sector, we only control for time trend and seasonality (blue). For small and industrial consumers, we additionally control for temperature (red). The bars indicate the monthly point estimates and the vertical lines the corresponding 5-95% confidence intervals.

Industrial consumers show a first significant response in September 2021 and then a more substantial response in October 2021. This coincides well with when wholesale prices of natural gas as well as industrial retail prices started to surge, already substantially before the beginning of the war in Ukraine (see Figure 1). Furthermore, the industrial crisis response increases over time, which may be driven by two factors. First, wholesale prices and industrial retail prices have increased further since September 2021. Second, the response of some industrial consumers may be subject to inertia, being constrained by long-term contracts on their output products, which can only gradually be adjusted.

One illustrative example of the response of industrial consumers is ammonia production, which is one of the largest single gas-consuming processes in Germany, accounting for roughly 6% of industrial gas consumption. In an earlier study⁷, we identified the peak reduction in domestic ammonia production in September and October 2021, when gas spot prices first surged. This saved about 0.6 TWh per month of natural gas. Thus, ammonia alone explains about a third of the estimated aggregated reduction during these months. In November 2021, ammonia production recovered as ammonia prices increased faster than natural gas prices, allowing German producers to pass on higher gas costs. This also matches with the insignificant savings coefficient in November 2021. The further reduction in the aggregate consumption during the first quarter of 2022 cannot be explained by ammonia production, which remained relatively stable. These savings must therefore stem from other industries.

The temporal pattern of power sector gas consumption does not exhibit a close correlation to gas prices. This is not surprising. As early as May 2021, natural gas prices were high enough to make gas-fired power plants the most expensive generators, i.e., inducing fuel switching toward coal plants. Beyond this point, gas prices do not have a major impact on the dispatch of gas-fired power stations, but power sector developments dominate. Those include the availability of renewable energy generation (August, October, and February were above average)¹⁷, the administrative phase-out of coal and nuclear plants in Germany¹⁸, and extraordinarily low availability of French nuclear power¹⁹ as well as a lack of hydroelectric energy following a severe drought in Southern Europe²⁰, triggering large exports from Germany. Gas-fired power generation may also be reduced through a decrease in electricity consumption, as a response to increasing electricity prices. However, disentangling these various drivers of gas consumption in the electricity sector would require a structural model of the power sector, which is beyond the scope of this study.

Comparing observed consumption to the estimated baseline

Figure 3 puts these savings into perspective with the estimated baseline consumption, which is strongly heterogeneous across sectors and seasons. For small consumers, the first substantial reduction of 4.9 TWh in March 2022 translates into relative savings of 10% compared to the estimated baseline consumption (see Methods for details). Meanwhile, a similar absolute reduction in September 2022 of 4.8 TWh leads to the largest relative savings of 28%. For industrial consumers, the first substantial reduction of 1.4 TWh in September 2021 corresponds to savings of 4%, which steadily increase up to 27% in October 2022. For the power sector, relative changes vary from 2% above baseline in December 2021 to 44% below baseline in July 2022. The highest relative reduction in total German gas consumption has been achieved in September 2022 with 28% of the estimated monthly baseline. In the second half of 2022, total gas consumption was reduced by 23% on average.

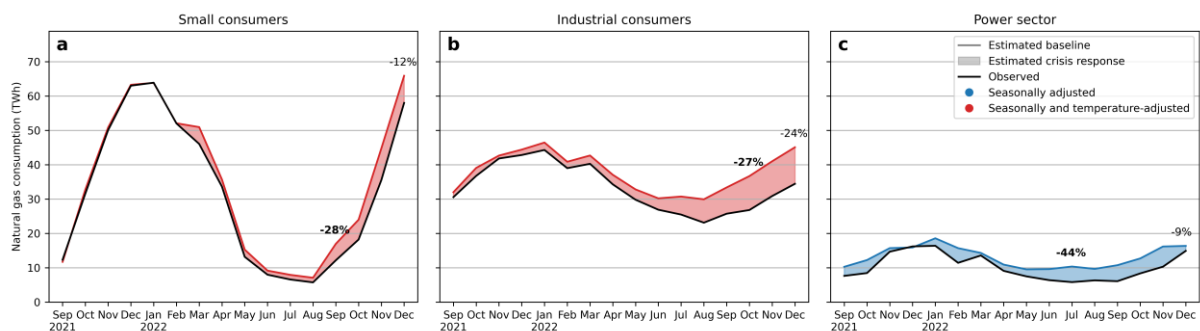


Figure 3: Observed versus estimated baseline consumption of natural gas

We distinguish between (a) small consumers, (b) industrial consumers, and (c) the power sector. For the power sector, we only control for time trend and seasonality (blue). For small and industrial consumers, we additionally control for temperature (red). The difference between observed and estimated baseline gas consumption indicates the estimated crisis effect. The maximum relative reduction is annotated in bold letters.

Note that the relative changes in the monthly natural gas consumption are heavily affected by the seasonality of heat demand. During summer, outside the heating season, we hardly see any response although prices have already been high, probably because consumption was already so low that it could not be reduced much further. During the heating season, the absolute reduction is higher, which can be explained by the large effect of behavioral changes such as reducing indoor temperatures.²¹ However, in the colder winter months, the same absolute reduction yields a smaller relative response, because of the larger baseline consumption. Put differently, the same behavioral change, e.g., reducing indoor temperatures by 1°C, can lead to larger relative savings during autumn and spring, compared to winter (see Figure 5).

Drivers of the crisis response

Our analysis focuses on the monthly effect that the event of the energy crisis had on natural gas consumption, and we deliberately did not include prices in our model. Nevertheless, comparing our estimated crisis response to the observed increase in retail prices can yield preliminary insights into the price elasticity of demand (Figure 4).

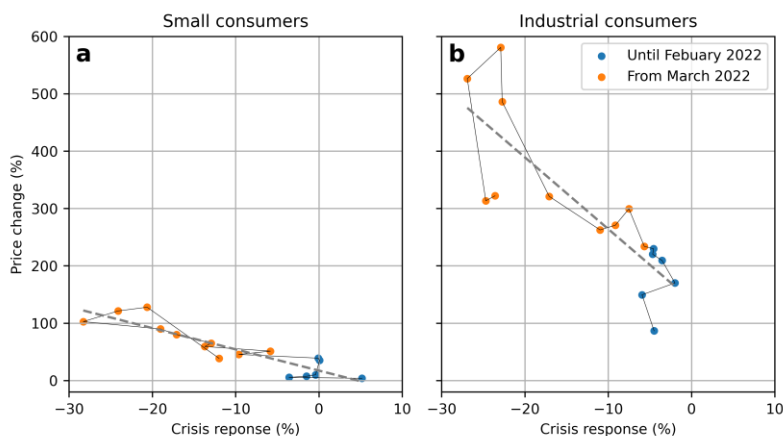


Figure 4: Crisis response and price changes

We distinguish between (a) small consumers and (b) industrial consumers. We plot estimated monthly consumption reductions (% change compared to baseline, see Methods) against monthly changes of residential and industrial prices. Price changes are calculated as the respective price level of a given crisis month divided by 2019-2021 pre-crisis average price level. A linear trend has been added across all points.

For small consumers, prices have increased by 130% between 2019-2021 and their peak in November 2022. Meanwhile, in November 2022, we estimate a consumption reduction of 21%. If consumers were primarily responding to current prices, this would imply a short-term price elasticity of -0.16 , which is in line with the estimates in the literature^{15,22,23}. This rough estimate should be interpreted with caution for four reasons. First, the observed consumption reductions may actually comprise both a short-term response and a long-term response to previously observed prices^{15,22-24}. Second, as discussed above, relative savings may heavily be driven by the seasonality of heat demand. For instance, approximating a price elasticity based on September data would yield a substantially higher value of -0.27 . Third, the available household price data are likely subject to measurement error (see Supplementary Note 2). Finally, after Russia's invasion of Ukraine, public attention to the topics of natural gas and energy crisis soared, and the German government launched an information campaign on energy savings in June 2022 (see Supplementary Note 5). Meanwhile, in addition to prices, surveys reported ethical motives of households to reduce energy consumption²⁻⁴. If this increase in public attention and ethical considerations had driven part of the reduction, estimates of small consumers' price elasticity would be inflated.

For industrial consumers, the same simple comparison of price and consumption changes suggests that they have been less responsive to price changes. As of September 2022, average gas prices for industrial consumers peaked at 580% of pre-crisis levels (January 2019 to September 2021). Together with the estimated 23% consumption reduction in September 2022, this would imply a small own-price elasticity of -0.04 . This figure is in line with previous findings and can be explained by the fact that industry may be able to pass on higher energy costs to end-consumers²⁵. Two aspects should be considered when interpreting this number. First, like households, industrial purchase prices are prone to measurement error. During our period of observation, few industrial consumers have received government support, implying a reduced exposure to industrial purchase prices, while others may be able to resell their contracted gas volumes at the spot market, implying the exposure to higher spot prices (see Supplementary Note 2). Second, industrial natural gas consumption may not only be affected by price changes but by other external factors such as economic activity. Indeed, economic activity was relatively high in many crisis months (see Supplementary Note 6). This suggests that the actual price response was even larger.

Conclusions

We show that German consumers of natural gas have responded significantly and substantially to the current energy crisis. The timing, size, and mechanism seem to be different for small, industrial, and power sector consumers. Industry started responding as early as in September 2021 with a 4% reduction in gas consumption that increased up to 27% a year later. This response was most likely triggered by surging wholesale gas prices but partly mitigated by rising output prices like that of ammonia. Small consumers started to reduce consumption later than industry. This pattern can be explained by the lagged pass-through of wholesale prices to retail tariffs, but also by non-financial motives to reduce gas consumption after Russia's invasion of Ukraine. After significantly reducing consumption by 10% in March 2022, they reached a maximum reduction of 28% in September 2022. However, large relative reductions during the summer translate to small absolute values, because small consumers use little gas during the summer, in contrast to industry, where seasonality is much less pronounced. Power sector gas consumption was driven by various developments in electricity markets, in particular the poor availability of hydroelectric and nuclear power plants.

Aggregated across these three consumer groups, we estimate a maximum relative reduction of natural gas consumption by 28% in September 2022. While the estimated relative savings were slightly lower during the colder months November and December, they remained significant. Over the second half of 2022, aggregate savings amounted to 23% of baseline consumption. This is a substantial contribution to achieving the EU and German targets of reducing gas consumption from August 2022 to March 2023 by 15% and 20%, respectively^{26,27}.

Our findings have important implications for policy. Market prices appear to be an effective means of coordinating and incentivizing savings—especially in times of extreme events like the current energy crisis. Our findings suggest that exposing consumers to prices and avoiding price dilution through subsidies is important to reduce gas consumption. Support policies and relief packages are needed to cushion hardship but should be designed in a way that they keep gas savings incentives intact.

Methods

Econometric model

We use an econometric model to identify the response of small (Eq. 1), industrial (Eq. 2), and power sector (Eq. 3) consumers to the 2021/2022 energy crisis. The effect of the crisis on monthly consumption levels is captured with 14 dummy variables for the crisis period from September 2021 until October 2022. The challenge is to distinguish between normal consumption variations, for example, due to space heating's temperature-dependency, and exceptional variations, which can be attributed to the current crisis. We address this challenge by controlling for various factors driving natural gas consumption. We control for a linear time trend and for annual seasonality using dummies for the month of the year. Most importantly, we control for the simulated weather-dependency of heating using simulated heating profiles. In several sensitivity runs, we omit the simulated heating profiles; omit the time trend; additionally control for economic activity, real wages, ambient temperature, and solar radiation (see Supplementary Information 5); and exclude the first year of the COVID-19 pandemic from our sample.

The econometric models are based on the following equations:

$$gas_t^s = a_0 + \mathbf{a_1} \mathbf{crisis}_t + \mathbf{a_2} \mathbf{time}_t + a_3 \mathbf{heat}_t + e_t \quad (1)$$

$$gas_t^i = a_0 + \mathbf{a_1} \mathbf{crisis}_t + \mathbf{a_2} \mathbf{time}_t + a_3 \mathbf{heat}_t + e_t \quad (2)$$

$$gas_t^p = a_0 + \mathbf{a_1} \mathbf{crisis}_t + \mathbf{a_2} \mathbf{time}_t + e_t \quad (3)$$

where

$gas_t^s, gas_t^i, gas_t^p$ gas consumption of small, industrial, and power sector consumers

\mathbf{crisis}_t vector of monthly crisis dummies

\mathbf{time}_t vector of monthly time dummies as well as a linear time trend

\mathbf{heat}_t simulated heating profile

$a_0 \dots a_3$ model parameters (often vectors)

e_t error term

Vectors are denoted in bold. The subscript t indicates the monthly temporal resolution of the model. In the main sections, we report the results for a_1 , which estimates the monthly consumption response to the crisis. Model parameters are estimated with an ordinary least squares (OLS) estimator using heteroscedasticity and autocorrelation robust standard errors.

Note the same estimated consumption response could be obtained by training a model on pre-crisis data and comparing forecasted consumption from this model to observations during the crisis. The advantage of our approach is that it allows for assessing the uncertainty and hence statistical significance of the estimated consumption changes.

Our model is applied to data starting in 2017 for industry and power stations and in 2018 for small consumers, yielding a total of 70 and 58 monthly observations, respectively. The data sources are summarized in Table 1 and explained in the following. The stationarity of dependent and independent variables is discussed in Supplementary Note 7.

Table 1: Data sources

Parameter	Source
Gas consumption of small and large consumers	Trading Hub Europe ²⁸
Gas-fired electricity generation, hourly unit-level data	ENTSO-E ²⁹
Gas-fired electricity generation, monthly national data	DESTATIS ³⁰
Simulated residential and commercial heating profiles	When2Heat dataset ³¹
Weather data	Climate Data Store ³²

Gas consumption of large and small consumers

We use separate data on the aggregated natural gas consumption of large and small consumers. Large consumers (German: “Kunden mit registrierender Leistungsmessung, RLM”) are metered daily with an annual consumption above 1.5 GWh. They include the industrial, power, and district heating sectors, and account for 60% of the overall gas consumption. Small consumers (German: “Kunden mit Standardlastprofil, SLP”) are metered only on an annual basis, including mainly the residential and service sectors and accounting for the 40% of the overall gas consumption.

Both datasets for small and large consumers were retrieved from the German gas market area manager THE in daily resolution and aggregated to months²⁸. In addition to the monthly aggregated data, we run our model with daily data, without finding notable changes (see Supplementary Information 5). THE publishes preliminary data near real time and provides corrected and final data about one and two months later. When this study was conducted, December 2022 was the last month with final data. We refrained from including more recent preliminary data, which are subject to substantial revisions. For instance, the average consumption of small consumers in October 2022 was 7% higher according to corrected instead of preliminary data.

In the absence of direct sub-annual metering, we use data for small consumers that is inferred from measurements of the overall consumption minus large consumers' metered consumption (this is referred to as the residual load of small consumers or "SLP-Restlast" in German). Note that THE also publishes allocation data on small consumers (which we used in an earlier version of this study), but this is only partly inferred from measurements (if "analytical standard load profiles" are applied) and mostly estimated (if "synthetical standard load profiles" are applied).

Gas consumption in the power sector

We further disentangle the natural gas consumption of large consumers into that of the power sector and that of other industrial consumers. To this end, we used monthly data on gas consumption by public power plants from the German Federal Statistical Office DESTATIS³⁰. For our sensitivity analysis with a daily resolution, we combine monthly data from DESTATIS with high-resolution data on gas-fired electricity generation from the European Network of Transmission System Operators for Electricity ENTSO-E²⁹. The resulting time series of monthly gas consumption in the power sector is deducted from the aggregated gas consumption of large consumers obtained from THE, before using the residual time series as gas_t^i in Eq. (2).

Simulated heating profiles

To control for the weather dependency of natural gas consumption, we simulated heating profiles based on the method of standard load profiles. This method was developed by the German Association of Energy and Water Industries, the German Association of Local Utilities, and European Association of Local Energy Distributors, and is the industry standard for simulating synthetic gas consumption profiles. The parameters of the standard load profiles are empirically determined, and we are using parameters from ref.³³, which was published in 2015. Hence, these parameters capture the temperature-dependency of heating demand before the energy crisis.

The standard load profiles model a non-linear relationship between ambient temperature and space heating using a sigmoid function (Figure 5). This non-linear relationship emerges from the heterogeneity of the building stock characteristics and occupants' behavior. For instance, the curvature around 15°C reflects the varying individual heating thresholds, i.e., the temperatures below which individual consumers start heating. Furthermore, the diminishing slope at lower ambient temperatures accounts for a less temperature-dependent heating behavior at these temperatures. Finally, standard load profiles are based on a rolling average of the ambient temperature, capturing thermal inertia of buildings.

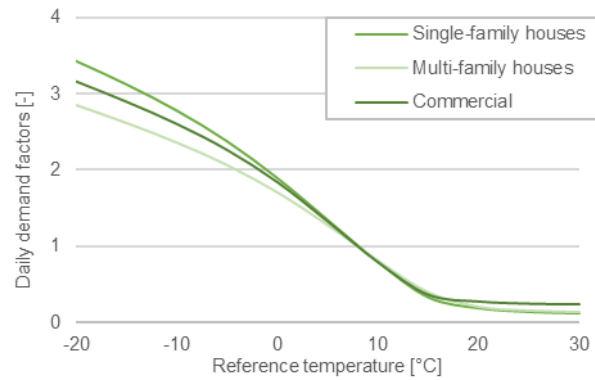


Figure 5: Daily demand factors for small consumers in Germany

The daily demand factors capture the non-linear relationship between heating consumption of different subgroups of small consumers and the reference temperature, which is a rolling average of the ambient temperature.

These non-linear effects cannot be accounted for by simply controlling for ambient temperature or the difference between ambient temperature and the heating threshold. Our main model based on standard load profiles yields an adjusted R^2 of 0.999, whereas substituting the standard load profiles with the difference between ambient temperature and an assumed heating threshold of 16 °C (based on ref.³⁴) results in a smaller adjusted R^2 of 0.994. While this change in the adjusted R^2 may seem minor, it can have substantial implications for our monthly crisis response estimates. For example, the estimated crisis response of small consumers in October 2022 increases from 5.8 to 6.8 TWh when using the difference between ambient temperature and the heating threshold instead of standard load profiles. Note that it is important to also control for a time trend and seasonality. Excluding these additional control variables, the adjusted R^2 decreases to 0.991 when using standard load profiles.

We applied standard load profiles to spatial data of the ambient temperature and constructed a national population-weighted average as described in refs.^{33,35–37}. More precisely, we constructed one time series that aggregates the expected heating demand in residential and commercial sectors. This matches the scope of the gas consumption data on small consumers that we are using for estimating the crisis response.

As a sensitivity, we additionally control for the population-weighted ambient temperature as well as population-weighted solar radiation, as solar radiation can negatively impact heating demand (see Supplementary Information 5). None of these variables notably improves model accuracy when applied in addition to the simulated heating profiles, which is why we omitted them in our main model specification. All weather data was downloaded from Climate Data Store³².

While decentralized heating is mostly included in the group of small consumers, the consumption of industrial consumers also exhibits significant temperature dependency. This is because our time series of industrial consumption, after deducting power sector gas consumption, still includes gas consumption of district heating plants. Since high-resolution data on district heating gas consumption is not available, deducting their consumption from the aggregate series, as done with the power sector, is not possible. Moreover, some industrial processes may also be dependent on outside temperature, but we cannot disentangle this from the temperature dependency of district heating. Therefore, we also control for the above-mentioned simulated national space heating demand time series in the model for industrial consumers.

Estimated baseline consumption

The baseline consumption gas_t^{base} is estimated as follows:

$$gas_t^{base} = gas_t - \hat{a}_1 crisis_t \quad (4)$$

where

gas_t gas consumption of small or industrial consumers (gas_t^s or gas_t^i)

\hat{a}_1 estimated vector of the absolute crisis response

$crisis_t$ vector of monthly crisis dummies

To derive the crisis response in relative terms, we compare our absolute model estimates with the baseline consumption according to the following equation:

$$\hat{a}_1^{rel} = \hat{a}_1 \sum_t (crisis_t \cdot gas_t^{base})^{-1} \quad (5)$$

Data availability

The original data used in this study are publicly available. The compiled dataset is published on Zenodo under <https://doi.org/10.5281/zenodo.7782052>.

Code availability

The code is published under an open license on GitHub under https://github.com/oruhnau/gas_savings.

Corresponding author

Correspondence and requests for materials should be addressed to Oliver Ruhnau.

Acknowledgments

The authors gratefully acknowledge research assistance by Nieves Casas. This work was supported by the German Federal Ministry of Education and Research via the ARIADNE Project [FKZ 03SF5K0].

Author contributions

O.R.: Conceptualization, Formal analysis, Writing – Original Draft, Visualization, Data curation, Project administration; **C.S.:** Conceptualization, Formal analysis, Writing – Original Draft, Visualization, Data Curation; **J.M.:** Conceptualization, Formal analysis, Writing – Original Draft, Visualization, Data Curation; **L.H.:** Conceptualization, Writing – Original Draft, Supervision

Competing interests

The authors declare no competing interests.

References

1. S&P global. European gas prices surge on renewed Russian gas supply uncertainty. <https://www.spglobal.com/commodityinsights/en/market-insights/latest-news/natural-gas/082222-european-gas-prices-surge-on-renewed-russian-gas-supply-uncertainty> (2022).
2. Ravikumar, A. P., Bazilian, M. & Webber, M. E. The US role in securing the European Union's near-term natural gas supply. *Nat Energy* **7**, 465–467 (2022).
3. Bitkom. *Ukraine-Krieg: Die Hälfte der Deutschen spart fossile Energie ein*. <https://www.bitkom.org/Presse/Presseinformation/Ukraine-Krieg-Haelfte-spart-fossile-Energie> (2022).
4. YouGov. *Energy Prices Consumers' fears for the future and opinions in 10 European countries regarding the evolving energy prices*. https://commercial.yougov.com/rs/464-VHH-988/images/YouGov%20Report_Energy%20Prices_Europe_Nordic.pdf (2022).
5. Tado. *55% der Deutschen haben seit Beginn des Ukraine-Krieges ihren Energieverbrauch gesenkt*. <https://www.tado.com/at-de/pressemitteilungen/energy-consumption-poll> (2022).
6. Lange, F. & Dewitte, S. Measuring pro-environmental behavior: Review and recommendations. *Journal of Environmental Psychology* **63**, 92–100 (2019).
7. Stiewe, C., Ruhnau, O. & Hirth, L. European industry responds to high energy prices: The case of German ammonia production, ZBW- Leibniz Information Centre for Economics, Kiel, Hamburg (2022).
8. Zachmann, G. & McWilliams, B. The European Union demand response to high natural gas prices. <https://www.bruegel.org/blog-post/european-union-demand-response-high-natural-gas-prices> (2022).
9. Löffelholz, J. Zahl der Woche / Sinkender Gasverbrauch: Ein Drittel weniger Gas.... <https://www.bdew.de/presse/presseinformationen/zahl-der-woche-sinkender-gasverbrauch-ein-drittel-weniger-gas/> (2022).
10. Statistics Netherlands, (CBS) & gas network operator, (GTS). Indicators of natural gas use by industry. <https://www.cbs.nl/nl-nl/visualisaties/indicatoren-aardgasgebruik-van-de-industrie> (2022).
11. Honoré, A. Demand response to high gas prices in Europe in 2021 and early 2022. (2022).
12. Ito, K. Do Consumers Respond to Marginal or Average Price? Evidence from Nonlinear Electricity Pricing. *American Economic Review* **104**, 537–563 (2014).
13. Hirth, L., Khanna, T. & Ruhnau, O. The (very) short-term price elasticity of German electricity demand, ZBW- Leibniz Information Centre for Economics, Kiel, Hamburg (2022).
14. Labandeira, X., Labeaga, J. M. & López-Otero, X. A meta-analysis on the price elasticity of energy demand. *Energy Policy* **102**, 549–568 (2017).
15. Auffhammer, M. & Rubin, E. *Natural Gas Price Elasticities and Optimal Cost Recovery Under Consumer Heterogeneity: Evidence from 300 million natural gas bills*. w24295 <http://www.nber.org/papers/w24295.pdf> (2018) doi:10.3386/w24295.
16. Wooldridge, J. M. *Introductory econometrics: a modern approach*; p. 461-499. (Cengage Learning, 2016).
17. Energy Charts. Monthly renewable share of public electricity generation in Germany. https://www.energy-charts.info/charts/renewable_share/chart.html?l=de&c=DE&interval=month. (2022).
18. Joly, J. Germany begins nuclear phase-out, shuts down three of six nuclear power plants. <https://www.euronews.com/2021/12/31/germany-begins-nuclear-phase-out-shuts-down-three-of-six-nuclear-power-plants> (2021).
19. Hirth, L. & Schlecht, I. Die zweite Krise: Frankreichs Kernenergie. (2022).

20. European Commission. Joint Research Centre. *Drought in Europe: July 2022 : GDO analytical report*. (Publications Office, 2022).
21. Sperber, E., Frey, U. & Bertsch, V. Turn Down Your Thermostats – a Contribution to Overcoming the European Gas Crisis? The Example of Germany. *SSRN Journal* (2022) doi:10.2139/ssrn.4288068.
22. Lavín, F. V., Dale, L., Hanemann, M. & Moezzi, M. The impact of price on residential demand for electricity and natural gas. *Climatic Change* **109**, 171–189 (2011).
23. Bastos, P., Castro, L., Cristia, J. & Scartascini, C. Does Energy Consumption Respond to Price Shocks? Evidence from a Regression-Discontinuity Design. 34.
24. Thomas, A., Massol, O. & Sévi, B. How are Day-ahead Prices Informative for Predicting the Next Day's Consumption of Natural Gas? Evidence from France. *EJ* **43**, (2022).
25. Li, R., Woo, C.-K., Tishler, A. & Zarnikau, J. How price responsive is industrial demand for natural gas in the United States? *Utilities Policy* **74**, 101318 (2022).
26. European Council. Council adopts regulation on reducing gas demand by 15% this winter. (2022).
27. German Federal Ministry for Economic Affairs and Climate Action (BMWK). Energieeinspar-Verordnungen zur Senkung des Gas- und Stromverbrauch. (2022).
28. Trading Hub Europe (THE). Publication of the aggregate consumption data. <https://www.tradinghub.eu/en-gb/Publications/Transparency/Aggregated-consumption-data> (2022).
29. European Network of Transmission System Operators for Electricity (ENTSO-E). *Transparency platform* <https://transparency.entsoe.eu> (2022).
30. German Federal Statistical Office (Destatis). <https://www.destatis.de> (2022).
31. Ruhnau, O. & Muessel, J. When2Heat Heating Profiles. <https://doi.org/10.25832/when2heat/2022-02-22> (2023).
32. Hersbach, H. *et al.* ERA5 hourly data on pressure levels from 1959 to present. *Copernicus Climate Change Service (C3S) Climate Data Store (CDS)*. <https://cds.climate.copernicus.eu/cdsapp#!/dataset/reanalysis-era5-pressure-levels?tab=overview> (2018).
33. German Federation of the Gas- and Water Industry (BDEW). Abwicklung von Standardlastprofilen Gas [Execution of Gas Standard Load Profiles]. Guidelines. (2015).
34. Kozarcanin, S., Andresen, G. B. & Staffell, I. Estimating country-specific space heating threshold temperatures from national gas and electricity consumption data. *Energy and Buildings* **199**, 368–380 (2019).
35. Ruhnau, O., Hirth, L. & Praktiknjo, A. Time series of heat demand and heat pump efficiency for energy system modeling. *Sci Data* **6**, 189 (2019).
36. Ruhnau, O. & Muessel, J. *Update and extension of the When2Heat dataset*. <https://www.econstor.eu/handle/10419/249997> (2022).
37. German Federation of the Gas- and Water Industry (BGW). Anwendung von Standardlastprofilen zur Belieferung nicht-leistungsgemessener Kunden [Application of Standard Load Profiles for Supplying Non-Daily-Metered Customers]. Practice Information. (2006).

Natural gas savings in Germany during the 2022 energy crisis

Oliver Ruhnau^{1,*}, Clemens Stiewe¹, Jarusch Muessel^{1,2}, Lion Hirth^{1,3}

¹ Hertie School, Centre for Sustainability, Berlin, Germany

² Potsdam Institute for Climate Impact Research, Potsdam, Germany

³ Neon Neue Energieökonomik GmbH, Berlin, Germany

*e-mail: ruhnau@hertie-school.org

Supplementary Tables

Supplementary Table 1: Overview of surveys among German households on saving energy in response to the current crisis

Survey	Summary
Bitkom ¹	<p>Method: Interviews via telephone during March 2022 with 1,003 respondents, asking the following questions related to reductions in natural gas consumption:</p> <ol style="list-style-type: none">1. Has your personal approach to the issues of electricity and energy consumption in your household changed against the background of the Russian war of aggression on Ukraine, i.e., do you, for example, consciously use less electricity, consciously heat less, or have switched to green electricity?2. Which of the following applications or measures to save electricity and energy do you use considering the Russian war of aggression on Ukraine? Among others, the investigated measures included saving hot water, e.g., through showing instead of taking a bath; use public transport instead of individual cars, reduce space heating) <p>Responses:</p> <ol style="list-style-type: none">1. Significant changes were reported by 16% and small changes were reported by 32% of the respondents. Meanwhile, 47% of the respondents reported no changes.2. Of those that consciously use less energy, 40% reported to reduce warm water and 22% report to reduce space heating.
YouGov ²	<p>Method: Online survey conducted from 14 to 31 March 2022 across ten European countries with about 12,000 respondents (2,111 in Germany), asking the following question related to reductions in natural gas consumption:</p> <ol style="list-style-type: none">1. In which concrete ways, if any, has the increase in prices for electricity, gas, and heating affected you so far? Among others, the options from which respondents could choose included “I use less heating” and “I changed my habits to save energy”. <p>Responses:</p> <ol style="list-style-type: none">1. Both items (“I use less heating” and “I changed my habits to save energy”) were selected by 31% of the respondents (across all countries; individual results for Germany are not available).
Tado ³	<p>Method: 2,500 customers of tado°, a company offering intelligent heating thermostats, asking the following two questions:</p> <ol style="list-style-type: none">1. Has your heating and energy consumption changed since the start of the war in Ukraine?2. If so, why are you saving more energy now? <p>Responses:</p> <ol style="list-style-type: none">1. 55% of the respondents reported to save more energy.2. The reported reasons were saving money (55%), reducing dependency on Russian gas (27%), and protecting the environment (18%).

Supplementary Table 2: Main specification OLS regression results for the following model specifications: small consumers (left), large consumers (center), power sector (right).

The unit of crisis response dummies is (TWh/month) and the 95% confidence intervals are reported in brackets. The significance levels are reported as *** for 0.001 ** for 0.01, and * for 0.05.

	Small consumers	Industrial consumers	Power sector
Adjusted R ²	0.999	0.986	0.756
Sep 2021	0.606*** [0.307, 0.904]	-1.438*** [-1.9, -0.975]	-2.641** [-4.151, -1.131]
Oct 2021	-1.176* [-2.293, -0.059]	-2.32*** [-3.112, -1.529]	-3.78*** [-5.225, -2.336]
Nov 2021	-0.761*** [-1.078, -0.445]	-0.847 [-1.798, 0.103]	-1.037* [-2.067, -0.007]
Dec 2021	-0.259 [-0.873, 0.356]	-1.571*** [-2.251, -0.891]	0.316 [-1.616, 2.247]
Jan 2022	0.05 [-0.379, 0.479]	-2.164*** [-2.74, -1.587]	-2.179* [-3.996, -0.363]
Feb 2022	-0.039 [-1.169, 1.09]	-1.863*** [-2.661, -1.065]	-4.278*** [-6.372, -2.183]
Mar 2022	-4.904*** [-5.791, -4.017]	-2.417*** [-3.346, -1.489]	-0.747 [-2.726, 1.231]
Apr 2022	-2.078*** [-3.216, -0.94]	-2.785*** [-4.334, -1.235]	-1.817* [-3.567, -0.068]
May 2022	-2.093*** [-3.059, -1.126]	-2.997*** [-4.281, -1.713]	-2.039** [-3.381, -0.696]
Jun 2022	-1.186*** [-1.579, -0.793]	-3.315*** [-4.268, -2.362]	-3.215*** [-4.897, -1.532]
Jul 2022	-1.356*** [-1.72, -0.993]	-5.248*** [-6.034, -4.463]	-4.539*** [-6.778, -2.301]
Aug 2022	-1.349*** [-1.661, -1.038]	-6.801*** [-7.38, -6.223]	-3.338* [-6.058, -0.617]
Sep 2022	-4.799*** [-5.283, -4.315]	-7.644*** [-8.429, -6.858]	-4.662*** [-6.44, -2.884]
Oct 2022	-5.779*** [-6.82, -4.738]	-9.873*** [-10.626, -9.12]	-4.353*** [-6.012, -2.693]
Nov 2022	-9.231*** [-9.558, -8.903]	-10.123*** [-11.114, -9.132]	-5.875*** [-7.285, -4.465]
Dec 2022	-7.895*** [-8.594, -7.197]	-10.629*** [-11.535, -9.722]	-1.454 [-3.725, 0.817]
Simulated heating profiles	0.88*** [0.841, 0.919]	0.236*** [0.194, 0.279]	-
Linear time trend	0.025*** [0.015, 0.035]	0.005 [-0.012, 0.021]	0.039* [0.006, 0.072]
Month	Dummies	Dummies	Dummies

Supplementary Notes

Supplementary Note 1: Measurement error

The available price data are prone to measurement error. Regarding small gas consumers, those living in multi-family houses are often informed about price changes only with a substantial lag. The price index used in this study—although very useful because of its monthly resolution—is not based on a representative household survey that would reflect these lags, but on average residential prices derived from a supplier survey. Regarding industrial consumers, it is unclear to which extent they can resell their contracted gas volumes at the spot market, which would imply that they were exposed to spot prices instead of industrial purchase prices.

Potential measurement errors are aggravated by the fact that, during our period of observation, the German government has supported the industry during the crisis with an *Energy Cost Mitigation Program (Energiekostendämpfungsprogramm)*. The program was proposed by the German government in April 2022, confirmed by the EU in July 2022, and applies retroactively to the period from February 2022 onwards. Under certain qualifications, it compensates industry for 30–70% of the energy cost increase, thereby reducing effective natural gas prices below the observed price index. However, the program has been criticized for its ineffectiveness⁴. For instance, by end of October 2022 only 4 billion € of the available 70 billion € have been approved⁵.

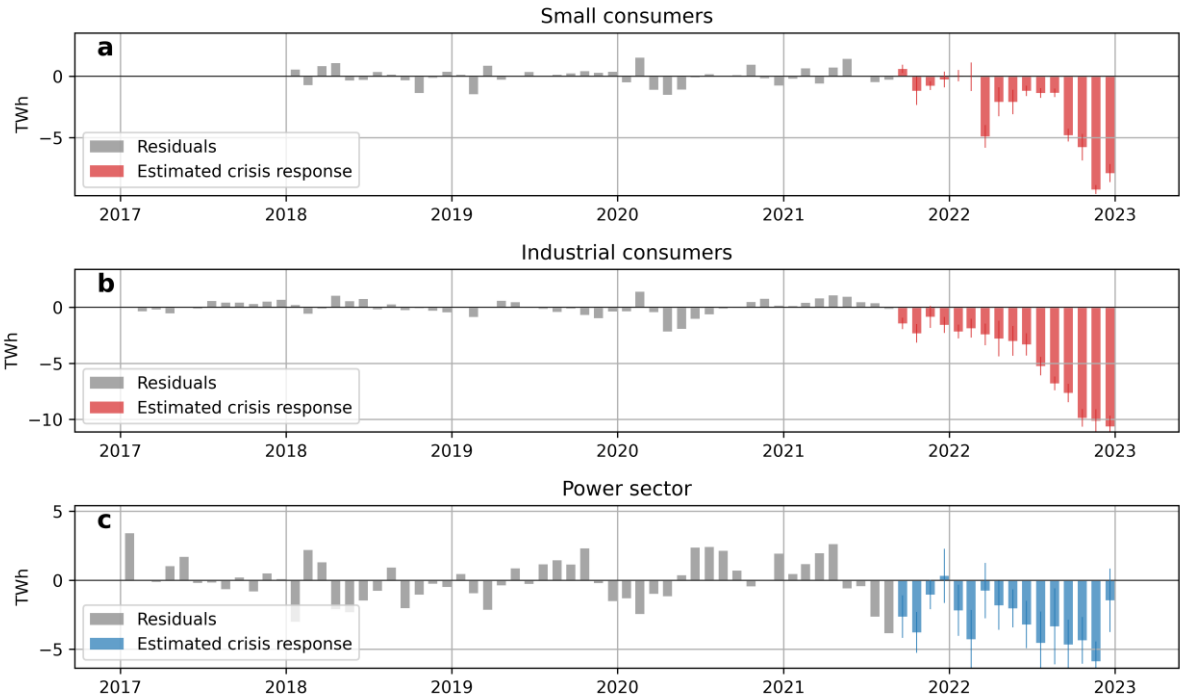
Measurement errors may induce a downward bias on price elasticities—as a general rule⁶ and in particular if measured price changes are higher than effective price changes.

Supplementary Note 2: Analysis of residuals

Supplementary Figure 1 contrasts our estimated crisis responses (displayed in red and blue) with our pre-crisis model residuals (displayed in grey). The estimated crisis responses capture the differences between consumption as observed and consumption as expected by our models fitted on pre-crisis observations, while the model residuals capture unexplained changes in consumption prior to the crisis. Note that the model residuals are, because of our model specification, zero during the crisis period, as all observed changes are absorbed by the monthly crisis response variables.

For small and industrial consumers, the size of the estimated crisis response dwarfs the pre-crisis residuals. Even during the COVID-19 lockdown starting in March 2020, extraordinary gas savings are much smaller than those observed during the second half of 2022. For the power sector, residuals and crisis effect are more similar in amplitude, which reflects the smaller explanatory power of our model for this sector (see Supplementary Table 2).

We employ the White test to determine whether heteroscedasticity is present in our model residuals. The test indicates that heteroscedasticity is not an issue in our models for small and industrial consumers but indeed in the power sector model. To account for that, we compute heteroscedasticity and autocorrelation consistent (HAC) standard errors.



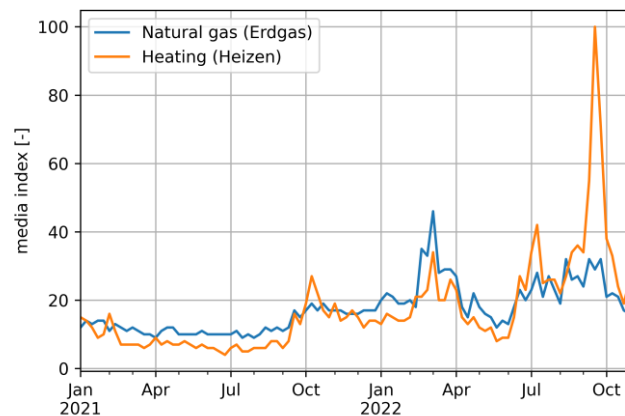
Supplementary Figure 1: Estimated crisis response and pre-crisis residuals

Residuals are the monthly difference between observed and fitted values (consumption data for small consumers is available only from 2018 onwards). For the crisis months, these residuals are zero because our crisis variables entirely explain the residual difference that cannot be explained by our independent variables. For small and industrial consumers, we control for temperature and economic activity. The bars indicate the monthly point estimates and the vertical lines the corresponding 5-95% confidence intervals.

Supplementary Note 3: Salience of energy topics

Consumer attention and engagement with energy topics can moderate and complement the effect of energy prices on consumption reductions. For instance, the literature has shown that price elasticities increase with the salience of price changes⁷⁻⁹. Price changes may be more salient to consumers when the magnitude of the change is sufficiently high, as during the current crisis. In fact, during our period of investigation, the public attention for energy topics in Germany has increased significantly and nonlinearly. This is exemplarily evidenced by the trends in online search queries for “natural gas” and “heating”, displayed in Supplementary Figure 2. The number of queries surged after Russia’s invasion of Ukraine in the end of February 2022 and then during the beginning of the heating seasons in September 2022.

Moreover, the literature shows that the provision of targeted information, social advertisements, education and social comparison can be used to effectively impact consumption behavior^{11,12}. An example for this during our period of investigation is a campaign called *Energy Shift (Energiewechsel)* launched by the German Federal Ministry of Economy and Climate Protection in June 2022.



Supplementary Figure 2: Salience of energy topics throughout the crisis

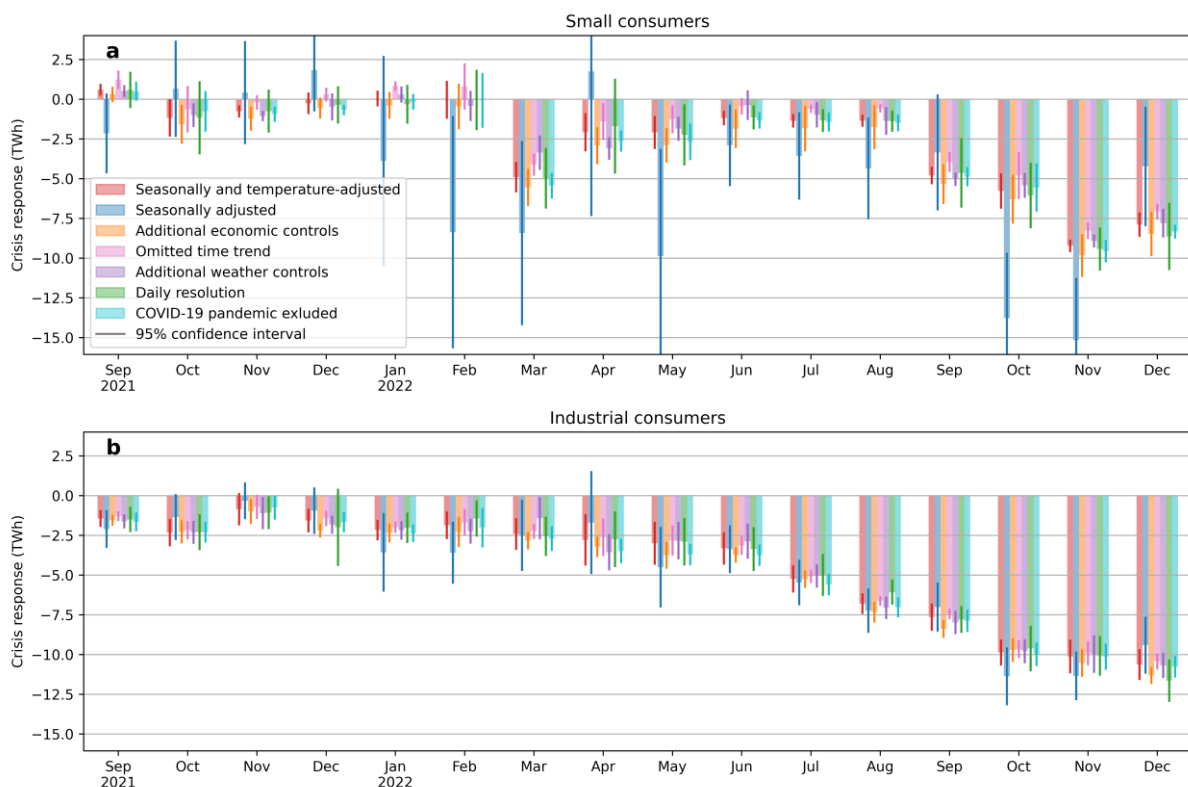
The graph shows a strong increase in Germans researching natural gas (German: “Erdgas”) and heating (German: “Heizen”). A prominent spike is visible in after the beginning of the Russian invasion of Ukraine in late February 2022. The data was downloaded from Google Trends¹⁰.

Supplementary Note 4: Sensitivity analyses

To analyze the robustness of our results to changes in model specifications, we conducted additional sensitivity runs for small and industrial consumers (Supplementary Figure 3).

As a first sensitivity analysis, we omitted the simulated heating profiles to illustrate the benefits of controlling for temperature. Without temperature adjustment, the estimated crisis response for small consumers varies substantially and is subject to high uncertainty, as indicated by the large error bars. As a result, estimates are often insignificant. Only when accounting for temperature can we identify a more consistent and less uncertain crisis response. For the response of industrial gas consumers, model estimates change less when not controlling for temperature as the temperature dependency is smaller. However, our main model can better explain the monthly variations in gas consumption, and the confidence intervals of the estimated crisis responses become narrower.

We also run a sensitivity analysis with additional controls for economic activity and real hourly wages. While economic activity wages may positively affect natural gas consumption, their exogeneity during the crisis is questionable. For industrial consumers, we use the inflation-adjusted production index for the manufacturing sector as a covariate. For small consumers, around 30% of total consumption stems from small commercial businesses such as bakeries, supermarkets, or hotels¹³. We control for their economic activity through inflation-adjusted sales indices for the retail and hospitality sectors. We additionally include real wages. All indices are retrieved from the German Statistical Office DESTATIS¹⁴, and the latest available datapoint was December 2022.



Supplementary Figure 3: Sensitivity analyses

Coefficients of the monthly crisis dummies for our main model are shown as red bars. Sensitivities depart from the main specification by omitting the simulated heating profiles (blue), controlling for economic activity and real income (yellow), omitting the linear time trend (pink), additionally controlling for solar radiation and ambient temperature (purple), or estimating the main specification using a daily resolution of our time series (green). Finally, we excluded the first year of the COVID-19 pandemic (March 2020 to February 2021) from our sample. The vertical lines on these bars indicate the estimates' 5-95% confidence intervals.

When also controlling for economic activity and income, we find insignificant effects of hospitality and retail sector activity as well as of real income on small consumers' gas consumption. The effect of manufacturing production on industrial gas consumption is, as expected, positive and significant. In many crisis months, controlling for economic activity slightly increases the estimated crisis response of industrial consumers. This implies that manufacturing activity was higher than usual, and gas consumption has been lower than usual, nevertheless. Hence, as a response to the crisis, gas consumption was disproportionately reduced compared to economic activity in manufacturing. Put differently, industrial consumption reduction was not caused by a general economic downturn in the manufacturing sector but rather by a specific crisis response, such as switching fuels or substituting domestic production of energy-intensive products with imports. One illustrative example of this is the case of German ammonia production. As we have shown in an earlier analysis, the decline in German ammonia production was largely compensated by an increase in imports, allowing downstream fertilizer production in Germany to remain fairly stable¹⁵.

Omitting the time trend from our model reduces the size of the crisis effect for small consumers. As the trend term captures a positive and significant trend in residential and commercial consumption prior to the crisis, fitted baseline consumption during the crisis is higher when this time trend is included in the model. This increases the difference between observed and baseline consumption and thus the estimated crisis effect. A specification that does not allow for a time trend in consumption is therefore prone to omitted-variable bias and was not considered for our main model (see *Supplementary Note 5: Unit root tests* for related statistical tests).

In another sensitivity analysis, we included population-weighted ambient temperature as well as population-weighted solar radiation as additional independent variables in our model. This is to test for potential temperature effects that are not well captured by the simulated heating profiles as well as the potential of solar radiation to reduce heating demand. While the estimated effect of both variables is significant, the inclusion of these variables does not alter the estimated crisis response. For simplicity, we decided not to include them in our main model.

We also estimated our main model specification using our data in their original, daily resolution. In this specification, we include fixed effects for the day of the week and exclude holidays, days between holidays and weekends, and the period between Christmas and New Year from our dataset because German companies are often closed on these days. We find that this hardly changes our estimates.

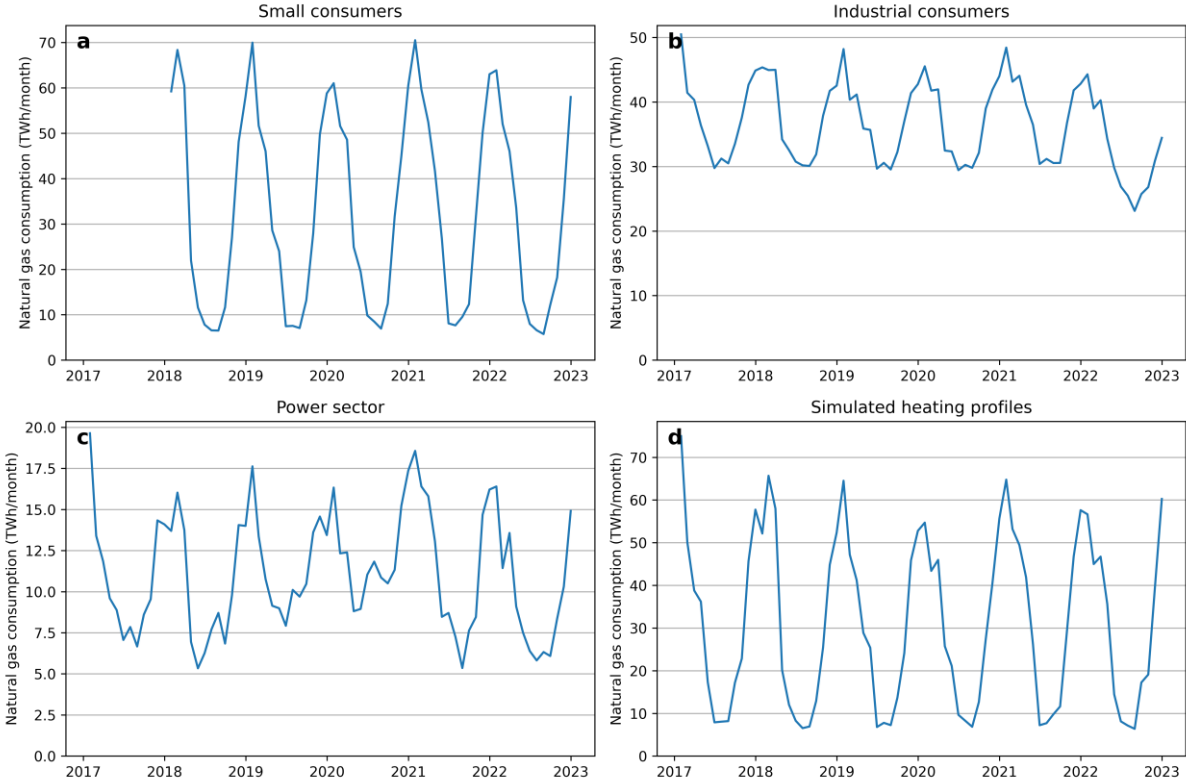
Finally, excluding the first year of the COVID-19 pandemic (March 2020 to February 2021) from our sample does not systematically alter our estimates of the energy crisis effect.

Supplementary Note 5: Unit root tests

We investigate potential unit roots of our time series using the Augmented Dickey-Fuller (ADF) test and the Kwiatkowski-Phillips-Schmidt-Shin (KPSS) tests. Supplementary Figure 4 clearly shows that all series used in our main specification as independent and dependent variables exhibit pronounced seasonality because of their temperature dependency. Since both the ADF and KPSS tests are tailored to detect non-seasonal unit roots, testing the original series might conceal an underlying stochastic trend.

We hence regress all four variables shown in Supplementary Figure 4 on monthly fixed effects to account for seasonality. The ADF and KPSS tests are performed on the resulting residuals. The ADF test (including a trend in the test regression) concludes that the residuals of small consumers, power sector consumers, and the simulated heating profiles are stationary after controlling for seasonality. For the seasonally adjusted industry residuals, the ADF test cannot reject the null hypothesis of a unit root.

Similarly, the KPSS test rejects the null hypothesis of (trend) stationarity only for industry residuals. This supports the notion of a persistent shock to consumption, which makes the industry residuals over the entire sample period appear like a random walk. When the tested residuals series is restricted to the pre-crisis period, we can reject the null hypothesis of a unit root for industry residuals in both tests as well.



Supplementary Figure 4: Natural gas consumption by consumer group as well as simulated heating profiles

We display monthly sums of natural gas consumption and of simulated heating profiles. Consumption data for small consumers is available only from 2018 onwards.

Supplementary References

1. Bitkom. *Ukraine-Krieg: Die Hälfte der Deutschen spart fossile Energie ein.* <https://www.bitkom.org/Presse/Presseinformation/Ukraine-Krieg-Haelfte-spart-fossile-Energie> (2022).
2. YouGov. *Energy Prices Consumers' fears for the future and opinions in 10 European countries regarding the evolving energy prices.* https://commercial.yougov.com/rs/464-VHH-988/images/YouGov%20Report_Energy%20Prices_Europe_Nordic.pdf (2022).
3. Tado. *55% der Deutschen haben seit Beginn des Ukraine-Krieges ihren Energieverbrauch gesenkt.* <https://www.tado.com/at-de/pressemitteilungen/energy-consumption-poll> (2022).
4. Handelsblatt. Wirtschaftsministerium greift nach harscher Kritik bei Unternehmenshilfen durch, (2022)
5. Federal Office of Economics and Export Control (BaFa). *Energiekostdämpfungsprogramme* https://www.bafa.de/DE/Energie/Energiekostendaempfungsprogramm/Foerderprogramm_Im_Ueberblick/Foerderprogramm_Im_Ueberblick.html (2022).
6. Alberini, A. & Filippini, M. Response of residential electricity demand to price: The effect of measurement error. *Energy Econ.* **33**, 889–895 (2011).
7. Rivers, N. & Schaufele, B. Saliency of carbon taxes in the gasoline market. *J. Environ. Econ. Manag.* **74**, 23–36 (2015).
8. Alberini, A., Khymych, O. & Ščasný, M. Responsiveness to energy price changes when salience is high: Residential natural gas demand in Ukraine. *Energy Policy* **144**, 111534 (2020).
9. Deryugina, T., MacKay, A. & Reif, J. The Long-Run Dynamics of Electricity Demand: Evidence from Municipal Aggregation. *Am. Econ. J. Appl. Econ.* **12**, 86–114 (2020).
10. Google Trends. <https://trends.google.com/trends/explore?date=2021-01-01%202022-11-15&geo=DE&q=erdgas,heizen> (2022).
11. *Jorgensen, S.E., & Fath, B.D. (Eds.). (2021). Environmental Management Handbook, Second Edition – Six Volume Set (2nd ed.). CRC Press.* <https://doi.org/10.1201/9781003054320>
12. Khanna, T. M. *et al.* A multi-country meta-analysis on the role of behavioural change in reducing energy consumption and CO2 emissions in residential buildings. *Nat. Energy* **6**, 925–932 (2021).
13. German Federation of the Gas- and Water Industry (BDEW). *Abwicklung von Standardlastprofilen Gas [Execution of Gas Standard Load Profiles]*, https://www.bdew.de/media/documents/Leitfaden_20160630_Abwicklung-Standardlastprofile-Gas.pdf (2015).
14. German Federal Statistical Office (Destatis). <https://www.destatis.de> (2022).
15. Stiewe, C., Ruhnau, O. & Hirth, L. European industry responds to high energy prices: The case of German ammonia production, ZBW - Leibniz Information Centre for Economics, Kiel, Hamburg (2022).