

APPLIED RESEARCH

Evaluation of Pulse Transit Time for Different Sensing Methodologies of Arterial Waveforms

GHALIB MUHAMMAD WAQAS JANJUA¹, (Member, IEEE),
DEWAR FINLAY², (Member, IEEE), DANIEL GULDENRING³, ATTA UL HAQ²,
AND JAMES MCLAUGHLIN², (Member, IEEE)

¹School of Engineering, Robert Gordon University, Aberdeen, AB10 7QB Scotland, U.K.

²Faculty of Electrical Engineering, Ulster University, Jordanstown, BT37 0QB Northern Ireland, U.K.

³Faculty of Electrical Engineering, University of Applied Sciences, 87435 Kempten, Germany

Corresponding author: Ghalib Muhammad Waqas Janjua (g.janjua@rgu.ac.uk)

This work was supported by Connected Health Early Stage Researcher Support System, by the European Union's Horizon 2020 Research and Innovation Programme under the Marie Skłodowska-Curie Grant under Agreement 676201.

This work involved human subjects or animals in its research. Approval of all ethical and experimental procedures and protocols was granted by the Integrated Research Application System (IRAS), U.K., under Project No. 166742, and performed in line with the Helsinki Declaration.

ABSTRACT We perform a novel comparative analysis between optically and mechanically derived pulse transit time (PTT) that is universally employed technique for cuffless blood pressure (BP) estimation. For data collection two inline photoplethysmogram (PPG) sensors were mounted at the distal and proximal phalanges of the index finger of each subject and top each PPG sensor fixture a finger ballistocardiogram (BPP) sensors were clamped. The clamped stacking of the BPP sensors over the PPG sensors provided vertical aligned acquisition of the blood flow waveform through the radial artery for both sensors. The analysis of variance (ANOVA) between PTT derived from the BPP and PPG sensors resulted in a statistically significant difference at $p < 0.05$. The PTT derived from the BPP sensors showed higher values, 17.8 milliseconds on average, than the PTT derived from the PPG sensors. Higher accuracy PTT values will improve the estimation of cuffless BP and thus has the potential to revolutionize the technology.

INDEX TERMS Pulse transit time, photoplethysmogram, finger ballistocardiogram, pulse arrival time, cuffless blood pressure.

I. INTRODUCTION

Cardiovascular and hypertension-related mortalities and their associated complexities have increased significantly worldwide [1]. To address this situation, methods for continuous and non-invasive monitoring of hypertension are required for early detection patient prioritisation and early interventions. Arterial stiffness, which is estimated using non-invasive PTT methods, is known to be an indicator of hypertension [2]. PTT has proven to be a good estimator of blood pressure (BP) and it is reasonably well established that it is directly related to $1/PTT$ in a cardiac cycle [3], [4]. Systolic BP (SBP) estimation using a PTT technique shows higher accuracies than diastolic BP (DBP). Numerous studies have shown

impressive results, but estimation accuracies still need to be improved which is ongoing research [5].

Pulse arrival time (PAT) and PTT are the most effective methods for the non-invasive assessment of arterial stiffness and cuffless BP estimation [3], [4], [5]. PAT is not a surrogate of a PTT, however, due to the electromechanical delay of the pre-ejection period (PEP) [6]. Research over the last decade has shown a higher correlation between PTT to BP than to PAT. According to the Moens-Korteweg equation, elasticity is inversely proportional to PTT which relates to stiffer arteries, resulting in higher wave speeds and smaller PTT value, and vice-versa. Comparisons between invasive and non-invasive assessment of PTT have validated that non-invasive assessment of PTT follows similar trends to the estimation of BP as an invasive PTT method [7]. PTT can be measured using various methodologies, for example,

The associate editor coordinating the review of this manuscript and approving it for publication was Ajit Khosla¹.

optical sensing of the arterial waveform using two inline photoplethysmogram (PPG) sensors for simultaneously acquiring the waveforms from two distal locations. BPP has higher precision and accuracy than PPG when validated against the SphygmoCor tonometer [8]. There are no reports, to our knowledge, of a comparison of PTT across modalities (PPG vs BPP) and intra-wavelength-based PPG PTT analysis [9], [10].

In this study, we have compared PTT derived from PPG waveforms against PTT derived from BPP waveforms. An agreement and ANOVA analysis have been used to compare PTT between the two sensing methodologies. The results show that PTT as measured by BPP has a larger value than PTT measured by PPG, which may help in reducing error in estimation accuracies.

II. BACKGROUND

A. PHOTOPLETHYSMOGRAM

PPG is a non-invasive photovoltaic-based measurement of change in volumetric blood flow through light absorption [11]. In transmission mode, the source of light is vertically aligned to the receiver; and in the reflection mode, the source of light is in line with receiver; and volumetric blood flow through tissues is acquire through absorption and reflection methods respectively. It provides blood oxygenation and heart rate measurement that is widely used in primary and intensive care settings [12].

PPG sensor works on the Beer-Lambert–Bouguer law [13] which is described as:

$$I(\lambda) = I_0 \exp[-\mu_a(\lambda)cd] \quad (1)$$

where ' I ' is the intensity of light (lux), ' I_0 ' is the intensity of source light (lux), ' λ ' is the light source wavelength (cm), ' μ_a ' is the absorptivity of substance/tissues (L/mmol*cm), ' c ' is the concentration of the absorption of the substance/tissue which is constant in the medium (mmol/L), and ' d ' is the optical path length of the medium (cm).

B. FINGER BALLISTOCARDIOGRAM

Finger ballistocardiogram (BPP) sensing is a non-invasive sensing technique which measures the distention waveform [14]. This arterial wall movement of the blood flow (BF) is due to the pressure waves when they are partially occluded against the bone. The polyvinylidene fluoride (PVDF) piezoelectric sensor is strapped around the index finger's distal phalanx. It works in a similar principle to that of the SphygmoCor tonometer.

BPP sensor works the Kessel formula [15] which is described as:

$$\sigma = p_i \frac{r}{s} \ll s \quad (2)$$

where ' σ ' is circumferential tension of the artery (Pa), ' p_i ' is the internal blood pressure (Pa), ' r ' is the radius of the artery (m), and ' s ' is the wall thickness of artery (m). BPP dynamic

pressure sensing can be described by Hooke's Law which is described as:

$$\sigma = E \cdot \epsilon \quad (3)$$

where ' E ' is the elastic modulus of the artery (N/m²) and ' ϵ ' is the strain due pressure on the artery (dimensionless). Pulse transit time relationship to blood pressure

PTT is the time lag of pressure waveform between two measurement sites, in Eulerian frames of reference, on an artery. It is related to pulse wave velocity (PWV) which is mathematically expressed by Equation (4) as:

$$PWV = \frac{\Delta X}{PTT} \quad (4)$$

where ' ΔX ' is the distance between the in-line sensors. The PWV relationship to artery elasticity is described by Moens-Korteweg (5):

$$PWV = \sqrt{\frac{Eh}{2r\rho}} \quad (5)$$

where ' E ' is the Young's modulus of artery (kg/ms²), ' h ' is the thickness of the arterial wall (m), ' r ' is the inner radius of artery (m), and ' ρ ' is blood density under controlled condition (kg/m³). Young's modulus of a artery can be described as:

$$E = E_0 e^{\alpha P} \quad (6)$$

where ' E_0 ' is the Young's modulus of an artery at zero blood pressure (kg), ' P ' is the arterial blood pressure (mmHg), and ' α ' is the curve fitting coefficient (1/mmHg). By analytical analysis of equation 1, 2 and 3, we obtain:

$$P = \frac{1}{\alpha} \ln \left(\frac{2r\rho\Delta X^2}{E_0 h} \right) - \frac{2}{\alpha} \ln(PTT) \quad (7)$$

We can observe that arterial pressure is directly related to the natural log of PTT; evidence for this has been provided by previous studies. Therefore, accurate assessment of PTT would result in better estimation of arterial pressure [10].

III. EXPERIMENTAL SETUP

The Biopac MP36R unit (Biopac System, USA) was used for subject's data collection, BPP and PPG sensor setting and interfacing was explained in Janjua et al. [8]. In this study two inline clamp-stacked PPG and BPP sensors were mounted at distal and proximal phalanxes, approximately 50mm apart, of the index finger of each subject. A block diagram of the acquisition system is shown in Figure 1.

A schematic diagram of the clamp-stacked mounting of the PPG and BPP sensors on figure is shown in Figure 2.

All the sensors were placed on the subject's non-dominant hand while seated in an armchair. The clinic room temperature was regulated at 22 °C and the acquisition were under a calm condition.

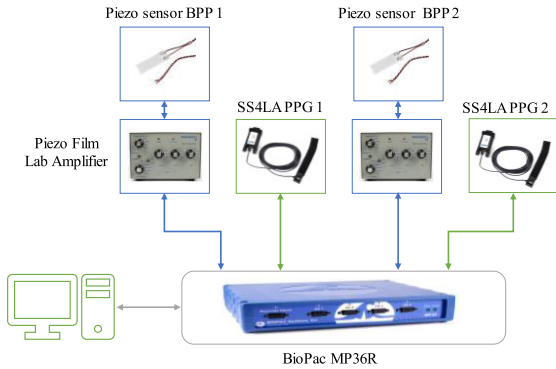


FIGURE 1. Block diagram of signal acquisition system used for the subject's data collection.

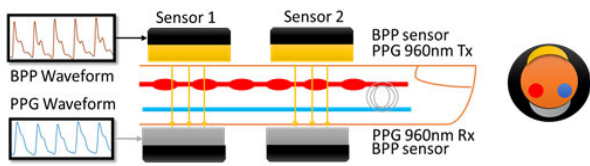


FIGURE 2. Schematic diagram showing the lateral (left side) and cross-sectional (right side) view of the inline placement of the sensors.

This study data was collated from seven healthy volunteers aged 30 ± 6 years from mixed or multiple ethnic background and average resting $BP \leq 120/80$. The 30 second window data was acquired after resting for 10 minutes. For this study, the ethical approval was obtained from hospital ethics committee, IRAS Project ID 166742. Subjects were asked to refrain from consuming alcohol for 36h and a meal/coffee for 2h before the collection of the data.

Subjects were requested not to make any movements and remain calm to reduce motion artefacts; they were also asked to restrict the trending of respiration rhythm. We assumed that there were no hydrostatic and gravitational variations in the artery under observation.

The maxima of the first derivative determines the steepest point on the blood flow waveform which is least affected by the reflected wave [16]. Physiologically, the first derivative represents the early systole of blood circulation during a cardiac cycle. In addition to the reflection wave effect, foot and peaks of blood flow are affected by other factors including skin colour, sensor skin contacts, and strapping pressure which have different responses depending on the sensing technology.

A. SIGNAL PROCESSING

The signals captured by the Acqknoweldge 5.0 software were exported in text format to MATLAB (R2018, MATLAB Inc.) software. The data of each subject was visually inspected to remove artefacts and crop the data for clean signals. The algorithm steps are as follows.

- 1) All the signals were normalised and detrended.
- 2) The first derivative of the signals was calculated.

- 3) The maxima of the first derivative (MoFD) were detected.
- 4) The difference was calculated between the MoFD for the inline sensor's waveform to find the PTT for PPG sensors (PTT-PPG) and PTT for BPP sensors (PTT-BPP).
- 5) If subjects' PTT-PPG waveform showed crossover, the PTT-BPP waveform data were discarded.
- 6) Bland Altman agreement analysis and ANOVA were used to find the agreement between PTT-BPP and PTT-PPG.
- 7) Regression analysis was used find the r^2 -fit among the methodologies.
- 8) A histogram (HM) of the subjects was plotted.

IV. RESULTS

Cohort's PTT-BPP, PTT-PPG, and their trend curve, using a 9th order polynomial, plots are shown in Figure 3. The cohort dataset showed higher PTT-BPP values by an average of 17.8 milliseconds compared to PTT-PPG values.

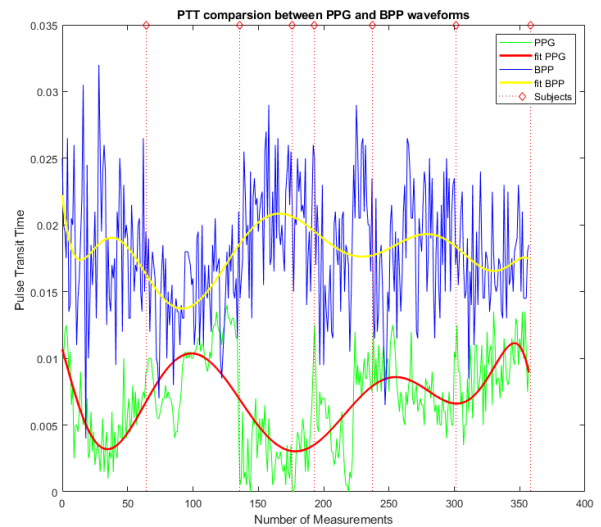


FIGURE 3. PTT-BPP, PTT-PPG data of the cohort and their trends.

The histogram for PTT-BPP and PTT-PPG plot is shown in Figure 4. Both waveform plots showed a normalised distribution. The datasets were tested for skewness, and none was found in any of the PTT-PPG or PTT-BPP datasets.

The PTT-BPP and PTT-PPG datasets were also tested using the repeated measure ANOVA which showed a significant difference with p -value ($p < 0.05$). Based on the p -value, it can be concluded that there is a significant difference between the groups. Interestingly, the PTT-BPP waveform showed consistent behaviour compared to PTT-PPG among the cohort datasets. This intermittent performance of PTT-PPG showed evading behaviour in tracking the blood flow waveform compared to PTT-BPP.

The Bland-Altman analysis was used to check agreement and its plot shown in Figure 4. The values of the limit of

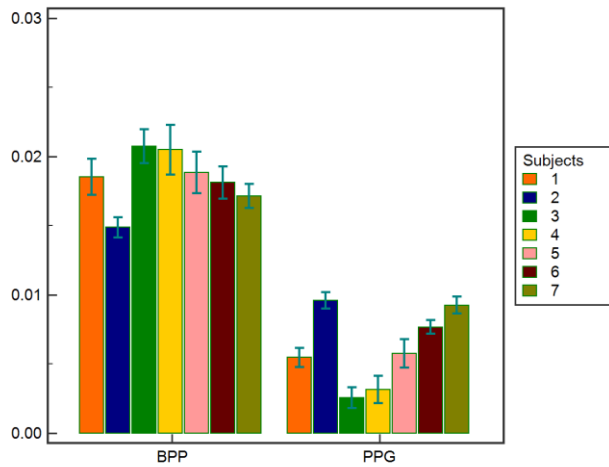


FIGURE 4. Histogram of PTT-PPG (PPG left) and PTT-BPP (BPP right) of the cohort with their variance.

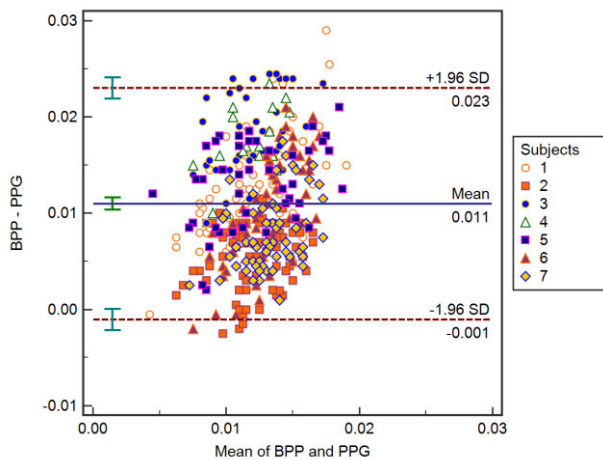


FIGURE 5. Bland-Altman analysis of PTT-BPP (BPP) and PTT-PPG (PPG) of the cohort dataset.

TABLE 1. PTT-BPP and PTT-PPG Bland-Altman parameters for agreement analysis of the cohort dataset.

Lower limit	95% CI	Upper limit	95% CI
-0.001050	-0.002140 to 0.00004064	0.02299	0.02190 to 0.02408

agreement and systematic differences is shown in Table 1 and Table 2. It can be concluded based on the analysis that almost all the dataset remained within 95% of the confidence interval with a few outliers. No biases were observed in the dataset and systematic mean difference was approximately zero (0.01097).

The regression analysis was performed to examine the proportion of variation between PTT-BPP and PTT-PPG cohort dataset and shown in Figure 6. The Spearman’s rank correlation was used to examine the biasness in regression analysis, and none was found.

TABLE 2. PTT-BPP and PTT-PPG Bland-Altman statistical difference of the cohort dataset.

Mean	SD	95% CI
0.01097	0.006132	0.01033-0.1161

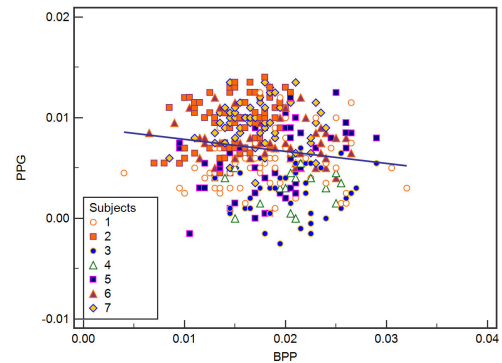


FIGURE 6. r^2 -fit of PTT-BPP and PTT-PPG of the cohort dataset.

TABLE 3. r^2 -fit correlation parameters for PTT-BPP and PTT-PPG of cohort dataset.

Sample size	regression	Spearman’s correlation	
	r^2	rho	Significance level
358	0.02405	-0.160	p=0.0024

V. DISCUSSION

A novel cross-comparison of PTT using different sensing methodologies is presented to evaluate the differences in PTT-PPG and PTT-BPP measurement precision and accuracies. The findings of this study are in line with finding of study from Janjua et al. [8] of BPP validation against the SphygmoCor tonometric waveform for haemodynamic indexes like the ageing index, stiffness index, augmentation index, etc.

According to Womersley’s flow in the large artery, the rate of flow waveform is predicted to lags by 90° to the pressure gradient [2], [8]. Similar analogy is observed here, where the BPP waveform, sensing of the distension waveform, directly relates to the pressure waveform [3] that may have resulted in improved assessments of PTT-BPP. It has been shown that PTT-BPP has quicker, and steadier responsiveness compared to conventional PTT-PPG measurements, hence it may help improve the accuracies pertaining to the estimation of BP using PTT [4], [5], [6], [17].

Healthy subjects’ data was collated for controlled testing and evaluation of these techniques. Whereas, in three subject’s PTT-PPG data plot showed a crossover to the PTT-BPP plot which highlights the inconsistency in tracking PTT by the PPG waveform due to changes in blood composition – their

data was discarded for this study. However, PTT-BPP showed a steady behaviour. It can be argued that in the absence of any interventions, for decreasing or increasing BP, the crossover poses a question for credibility regarding the use of PPG technology to measure PAT/PTT or similar parameters. Whereas PTT_BBPP is found not to be affected by skin colour, blood composition, or sensitivity to oxygenation due to its very nature of pressure sensing methodology [7].

ACKNOWLEDGMENT

The authors would like to thank Prof. Tara Moore for her help and support in this project.

REFERENCES

- [1] B. Zhou, R. M. Carrillo-Larco, G. Danaei, L. M. Riley, C. J. Paciorek, G. A. Stevens, E. W. Gregg, J. E. Bennett, B. Solomon, and R. K. Singleton, "Worldwide trends in hypertension prevalence and progress in treatment and control from 1990 to 2019: A pooled analysis of 1201 population-representative studies with 104 million participants," *Lancet*, vol. 398, no. 10304, pp. 957–980, 2021.
- [2] J. P. Lekakis, N. A. Zakopoulos, A. D. Protogerou, T. G. Papaioannou, V. T. Kotsis, V. C. Pitiriga, M. D. Tsiirikos, K. S. Stamatelopoulos, C. M. Papamichael, and M. E. Mavrikakis, "Arterial stiffness assessed by pulse wave analysis in essential hypertension: Relation to 24-H blood pressure profile," *Int. J. Cardiol.*, vol. 102, no. 3, pp. 391–395, Jul. 2005.
- [3] R. Mukkamala, J.-O. Hahn, O. T. Inan, L. K. Mestha, C.-S. Kim, H. Toreyin, S. Kyal, H. Toreyin, and S. Kyal, "Towards ubiquitous blood pressure monitoring via pulse transit time: Theory and practice," *IEEE Trans. Biomed. Eng.*, vol. 62, no. 8, pp. 1879–1901, Aug. 2015.
- [4] D. Buxi, J.-M. Redouté, and M. R. Yuce, "A survey on signals and systems in ambulatory blood pressure monitoring using pulse transit time," *Physiol. Meas.*, vol. 36, no. 3, pp. R1–R26, Mar. 2015.
- [5] M. Sharma, "Cuff-less and continuous blood pressure monitoring: A methodological review," *Technologies*, vol. 5, no. 2, p. 21, May 2017.
- [6] G. Zhang, M. Gao, D. Xu, N. B. Olivier, and R. Mukkamala, "Pulse arrival time is not an adequate surrogate for pulse transit time as a marker of blood pressure," *J. Appl. Physiol.*, vol. 111, no. 6, pp. 1681–1686, 2011.
- [7] M. Gao, N. B. Olivier, and R. Mukkamala, "Comparison of noninvasive pulse transit time estimates as markers of blood pressure using invasive pulse transit time measurements as a reference," *Physiol. Rep.*, vol. 4, no. 10, May 2016, Art. no. e12768.
- [8] G. M. W. Janjua, D. Finlay, D. Guldenring, A. U. Haq, and J. McLaughlin, "A low-cost tonometer alternative: A comparison between photoplethysmogram and finger ballistocardiogram and validation against tonometric waveform," *IEEE Access*, vol. 7, pp. 142787–142795, 2019.
- [9] T. Tamura, Y. Maeda, M. Sekine, and M. Yoshida, "Wearable photoplethysmographic sensors—Past and present," *Electronics*, vol. 3, no. 2, pp. 282–302, Apr. 2014.
- [10] J. Y. A. Foo, S. J. Wilson, C. Dakin, G. Williams, M.-A. Harris, and D. Cooper, "Variability in time delay between two models of pulse oximeters for deriving the photoplethysmographic signals," *Physiol. Meas.*, vol. 26, no. 4, pp. 531–544, Aug. 2005.
- [11] J. Allen, "Photoplethysmography and its application in clinical physiological measurement," *Physiol. Meas.*, vol. 28, no. 3, pp. 1–39, Mar. 2007.
- [12] S. Pant, S. Umesh, and S. Asokan, "A novel approach to acquire the arterial pulse by finger plethysmography using fiber Bragg grating sensor," *IEEE Sensors J.*, vol. 20, no. 11, pp. 5921–5928, Jun. 2020.
- [13] S. Hu, V. Azorin-Peris, and J. Zheng, "Opto-physiological modeling applied to photoplethysmographic cardiovascular assessment," *J. Healthc. Eng.*, vol. 4, no. 4, pp. 505–528, 2013.
- [14] C. Stefanadis, J. Dernellis, C. Vlachopoulos, C. Tsioufis, E. Tsiamis, K. Toutouzas, C. Pitsavos, and P. Toutouzas, "Aortic function in arterial hypertension determined by pressure-diameter relation: Effects of diltiazem," *Circulation*, vol. 96, no. 6, pp. 1853–1858, Sep. 1997.
- [15] W. Nitsche, "The use of piezofilms for noninvasive measurements of blood pressure," in *Blood Pressure Measurements*. Berlin, Germany: Steinkopff, 1990, pp. 27–33.
- [16] E. Hermeling, K. D. Reesink, R. S. Reneman, and A. P. G. Hoeks, "Measurement of local pulse wave velocity: Effects of signal processing on precision," *Ultrasound Med. Biol.*, vol. 33, no. 5, pp. 774–781, May 2007.
- [17] G. M. W. Janjua, D. Finlay, D. Guldenring, R. Hadia, and J. McLaughlin, "Novel non-invasive pressure-volume loop measurement for local pulse wave velocity estimation," in *Proc. Comput. Cardiol. Conf. (CinC)*, Sep. 2017, pp. 1–4.



GHALIB MUHAMMAD WAQAS JANJUA

(Member, IEEE) received the bachelor's degree in electrical engineering from UET, Pakistan, in 2008, and the master's degree in digital system design and signal processing from NUST, Pakistan, in 2014, and the Ph.D. degree from Ulster University, U.K. He was a Marie Curie Fellow with Ulster University, a training consortium funded by the European Union's Horizon 2020 Research and Innovation Programme. He is a Lecturer with

Robert Gordon University, U.K. He specializes in noninvasive continuous cuff-less blood pressure monitoring systems. He is a solution-oriented professional with a proven track record in the IoT-embedded system product development and signal processing, both within the industry and academic sectors. He has an excellent acumen-ship to research and development processes and procedures for product development.



DEWAR FINLAY

(Member, IEEE) received the Ph.D. degree in computing and the Ph.D. degree in higher educational practice. He is the Engineering Research Director of Ulster University, where he is also a Professor of electronic systems. He is also an Electronic Engineer. He has published more than 100 articles (H-index: 21) and supervised more than ten Ph.D. students to completion. He has attracted over £10 million in research funding, all related to the development of healthcare technology, and currently serves as a PI and CI for several EU H2020 projects in the area of connected health (CHESS, Pathway, and IC-Health). He has served as the Director for the University's M.Sc. in health informatics. His research interest includes healthcare technology, with a specific emphasis on biosignal processing and analysis. He is currently a member of the Board of Directors of Computing in Cardiology, Inc.



DANIEL GULDENRING

received the Dipl.-Ing. (FH) degree in electrical engineering and the M.Eng. degree in mechatronics engineering from the Augsburg University of Applied Sciences, Augsburg, Germany, in 2009, and the Ph.D. degree from the School of Computing and Mathematics, Ulster University, Belfast, in 2013. He is currently with the Faculty of Electrical Engineering, University of Applied Sciences, Kempten, Germany. His main areas of teaching are in electrical engineering and embedded systems. His main research interest includes medical devices, with a particular interest in biomedical signal processing for computerized electrocardiology. He is a member of the International Society for Computerized Electrocardiology. He has been serving on the Program Committee for Computing in Cardiology, since 2009.



ATTA UL HAQ received the bachelor's degree in metallurgy and materials engineering from the Ghulam Ishaq Khan Institute of Engineering Sciences and Technology (GIKI), Pakistan, the master's degree in materials engineering from the Korea Advanced Institute of Science and Technology (KAIST), South Korea, and the Ph.D. degree in engineering from Ulster University, in 2017. His Ph.D. research is involved in nanoengineering of group IV nanocrystals by atmospheric pressure microplasmas. He was a prestigious Marie Curie Fellow with Ulster University, where he is currently a Postdoctoral Research Fellow with the Nanotechnology and Integrated Bioengineering Centre (NIBEC).



JAMES MCLAUGHLIN (Member, IEEE) received the degree from NUU and the Ph.D. degree in physics from Ulster University. He is currently a Professor with the School of Engineering. He is also the Director of the Engineering Research Institute, the Director of the NIBEC, and a Physicist. He has been developing significant initiatives within research, technology transfer, outreach, and teaching, since 1986. He has successfully cofounded a set of spin-out companies, including the highly successful connected health company, Intelesens Ltd., and more recently, SiSaF-Ltd. He was a Consultant associated

with key processes and patents with HeartScape and HeartSine. He is honored as an invited speaker with over 30 international conferences. He has personally granted over £100M of funding, including NIBEC/BEST/SEAGATE Consortium/NICAM/NANOTECHNI/NIACE/CACR/CHIC, and a new healthcare technology city deal. He holds over 30 patents, including one for the world's bestselling disposable medical electrode. His salient disciplines address connected health, nanotechnology, and related biosensing/point-of-care diagnostic applications. He is a fellow of the Institute of Physics and the Irish Academy of Engineering. He received a Senior Distinguished Research Fellowship from Ulster. He also received an OBE for his services to research and economic development in the U.K. He has attained an excess of 300 publications (H-index: 34) and supervised over 25 Ph.D. students. In recent years, his over-arching strategy is to develop a strongly connected health platform within the EU (as the Co-Director of the European Connected Health Alliance). This work involves linking bioengineering and computing sciences with sensor technology developed within NIBEC and thus, facilitating clinically led research initiatives to benefit the healthcare sector. He held positions on committees, such as RAE-2008 Materials Assessment Panel, a Matrix Panel Member and the SubChair with the EPSRC-College, NanoIreland Task Force/Chaired the Nanomaterials Panel, H2020-COST Action ENJECT, H2020 E-Health Strategy Board, Advisory Committee to KTN-Health Technologies, CCAN, MSSSI, and the Cambridge Nano-DTC. He was the Chair and the Co-Founder of the European Connected Health Alliance and the Co-Chair of the Matrix NI Life and Health Sciences Strategy Panel. He also leads one of the last final seven teams in the £10M Qualcomm Tricorder Xprize Competition. He has recently co-led a £5M to connected health innovation.

...