

Der Digital Object Identifier (DOI) auch für Bibliotheken.

Jan Brase





Digital Object identifier (DOI)

Digital Object Identifier (DOI)

- 1998 Gründung der **International DOI Foundation (IDF)** als übergeordnete Organisation .
- Es existieren derzeit (06/2009) 7 **Registrierungsagenturen (RA)**.
- DOI ist eine geschützte Marke.
- DOI ist eine Vermarktung des technisch geprägten Handle Systems.

- Seit Sommer 2006: ISO Working group 26324. Seit Sommer 2008 fertiger CD (Committee Draft).
- **Standardisierung** ist wichtiger Schritt zur Anerkennung als Protokoll.

Resolving

- DOI Namen können in **jedem** Handleserver **weltweit** aufgelöst werden, ohne Kenntnis der Vergabeinstitution.
- Weltweit wurden bereits über 30 Mio. DOI Namen vergeben, 98% davon für elektronische Versionen von Zeitschriftenartikeln.
- Das IDF System garantiert vertrauenswürdige Verantwortlichkeiten, inhaltliche Standards und Workflows.
- DOI Namen sind zitierfähig.



Die TIB als DOI Registrierungsagentur

Das Projekt

- Der DFG-Ausschuss „Wissenschaftliche Literaturversorgungs- und Informationssysteme“ hat 2004 das Projekt „**Zitierfähigkeit Wissenschaftlicher Primärdaten**“ gestartet, um den Zugang zu Forschungsdaten zu verbessern.
- Die Technische Informationsbibliothek (TIB) ist seit 2005 zentrale DOI-Registrierungsagentur für Forschungsdaten. Angefangen für den Bereich der Geowissenschaften.

Daten und Artikel

- Die DOI-Registrierung ermöglicht eine elegante **Verlinkung** zwischen einem Wissenschaftlichen Artikel und den im Artikel analysierten Forschungsdaten.

So wird beispielsweise der Datensatz:

G.Yancheva, . R Nowaczyk et al (2007)

Rock magnetism and X-ray fluorescence spectrometry analyses on sediment cores of the Lake Huguang Maar, Southeast China, PANGAEA

[doi:10.1594/PANGAEA.587840](https://doi.org/10.1594/PANGAEA.587840)

in folgendem Artikel analysiert:

G. Yancheva, N. R. Nowaczyk et al (2007)

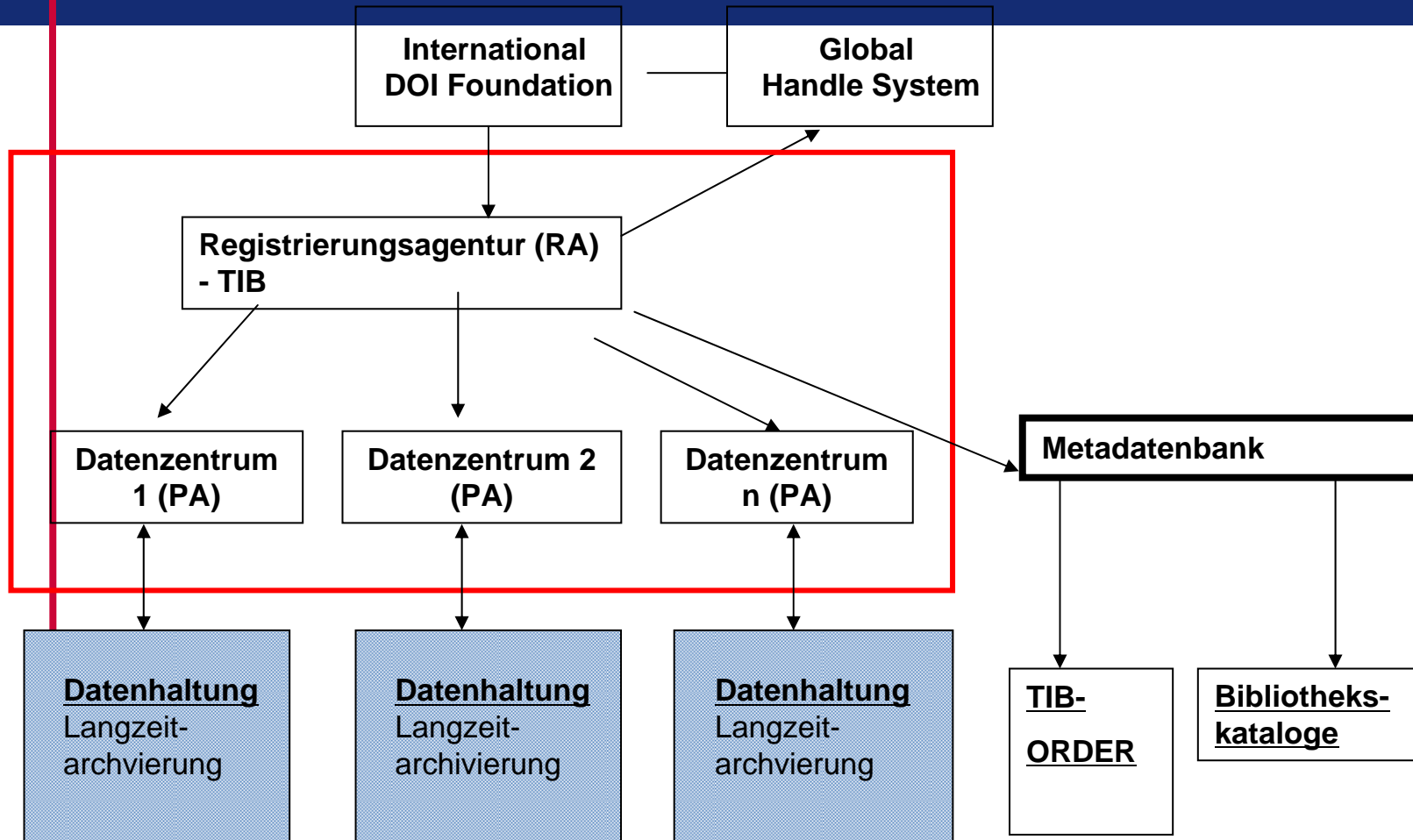
Influence of the intertropical convergence zone on the East Asian monsoon
Nature 445, 74-77

[doi:10.1038/nature05431](https://doi.org/10.1038/nature05431)

Datenzentren

- Die Registrierung erfolgt dabei immer in Kooperation mit vertrauenswürdigen Einrichtungen die weiterhin für Qualitätssicherung und die Pflege und Speicherung der Inhalte zuständig sind.
- Dies übernehmen:
 - Qualitätssicherung
 - Pflege
 - Metadatenerzeugung

Struktur



“Nicht-kommerzielle” DOI Agentur

Die Vergabe von DOI ist, wie jeder Persistente Identifier, mit Kosten verbunden

3 Säulen zur Finanzierung

- Kunden-Beziehungen mit den Datenzentren.
- Grundfinanzierung der TIB (Erweiterung des Auftrags) .
- Forschungsförderer (Langzeitverfügbarkeit von Forschungsergebnissen).



Forschungsdaten im Bibliothekskatalog

TIBORDER
Katalog

suchen [und] sortiert nach

 Nummer: [Abmelden](#)

Titelliste / Titeldaten

Suchergebnis sichern
Datenbankauswahl
Bestellung ohne Recherche
Benutzerinfo
TIB Homepage

■ Ihre Aktion suchen [und] exk primaerdaten

1 - 10 von 1316

1. [Pollen record and age determination of profile AHL5, supplementary data to: Behre, Karl-Ernst \(1976\): Pollenanalytische Untersuchungen zur Vegetations- und Siedlungsgeschichte bei Flögeln und im Ahlenmoor \(Elb-Weser-Winkel\), Probleme der Küstenforschung im südlichen Nordseegebiet, 11, 101-118](#)
/ Karl-Ernst Behre. - 2009-01-26
2. [Pollen record of sediment core MD95-2043, supplementary data to: Fletcher, William J; Sánchez Gofii, Maria Fernanda \(2008\): Orbital- and sub-orbital-scale climate impacts on vegetation of the western Mediterranean basin over the last 48,000 yr, Quaternary Research, 70\(3\), 451-464](#)
/ William J Fletcher. - 2009-01-22
3. [Chemical composition of basalts from ODP Leg 115, supplementary data to: Fisk, Martin R; Duncan, Robert A; Baxter, Alistair N; Greenough, John D; Hargraves, Robert B; Tatsumi, Yoshiyuki; Shipboard Scientific Party \(1989\): Reunion hotspot magma chemistry over the past 65 m.y.: Results from Leg 115 of the Ocean Drilling Program, Geology, 17, 934-937](#)
/ Martin R Fisk. - 2009-01-23
4. [Stable isotope ratios of foraminifera from sediment cores off northeastern Brazil, supplementary data to: Arz, Helge W; Pätzold, Jürgen; Wefer, Gerold \(1999\): The deglacial history of the western tropical Atlantic as inferred from high resolution stable isotope records off northeastern Brazil, Earth and Planetary Science Letters, 167\(1-2\), 105-117](#)
/ Helge W Arz. - 2009-01-23
5. [Sedimentology and stable isotope ratios of planktonic foraminifera from two sediment cores off Northeastern Brazil, supplementary data to: Arz, Helge W; Pätzold, Jürgen; Wefer, Gerold \(1998\): Correlated millennial-scale changes in surface hydrography and terrigenous sediment yield inferred from last-glacial marine deposits off northeastern Brazil, Quaternary Research, 50\(2\), 157-166](#)
/ Helge W Arz. - 2009-01-23
6. [Ages and biostratigraphic datums of DSDP sediments from the Pacific Ocean and the Caribbean Sea, supplementary data to: Keigwin Jr, Lloyd D \(1978\): Pliocene closing of the Isthmus of Panama, based on biostratigraphic evidence from nearby Pacific Ocean and Caribbean Sea cores, Geology, 6, 630-634](#)
/ Lloyd D Keigwin Jr. - 2009-01-23
7. [Frequency distribution of graded turbidite cycles in DSDP sediments from the Coral Sea Basin and the Sea of Japan, supplementary data to: deVries Klein, George \(1984\): Relative rates of tectonic uplift as determined from episodic turbidite deposition in marine basins, Geology, 12, 48-50](#)
/ George deVries Klein. - 2009-01-23
8. [Basalt density, basement age, and intrusive/extrusive relations from DSDP Legs 2 through 7, 9, and 14, supplementary data to: Salisbury, Matthew H; Christensen, Nikolas I \(1973\): Progressive weathering of submarine basalt with age: further evidence of sea-floor spreading, Geology, 1, 63 - 64](#)
/ Matthew H Salisbury. - 2009-01-22
9. [Element concentrations, and Sr and Os isotope ratios of DSDP Leg 92 metalliferous carbonates, supplementary data to: Ravizza, Gregory E \(1993\): Variations of the 187Os/186Os ratio of seawater over the past 28 million years as inferred from metalliferous carbonates, Earth and Planetary Science Letters, 118\(1-4\), 335-348](#)
/ Gregory E Ravizza. - 2009-01-20
10. [Magnetic properties of Cenozoic MORB and Cretaceous MORB from DSDP and ODP holes, supplementary data to: Wang, Daming; Van der Voo, Rob; Peacor, Donald R \(2005\): Why is the remanent magnetic intensity of Cretaceous MORB so much higher than that of mid to late Cenozoic MORB?, Geosphere, 1\(3\), 138-146](#)
/ Daming Wang. - 2009-01-20

Wort	Typ	Anzahl
primaerdaten	Kommentar (Exemplar)	1316

gehe zu 1 - 10 von 1316

suchen [und] | Alle Wörter | sortiert nach Erscheinungsjahr
SAFOD | Suchen

Nummer: | [Abmelden](#)

Titelliste | **Titeldaten**

- Suchergebnis sichern
- Datenbankauswahl
- Bestellung ohne Recherche
- Benutzerinfo
- TIB Homepage

■ Ihre Aktion suchen [und] (Alle Wörter) SAFOD

1 von 14



Titel: [SAFOD Main Hole downhole logging data phase 2 \(2005\), 3387-3799m](#)



Verfasser: [SAFOD](#)



Erschienen: Potsdam, Germany : GeoForschungsZentrum Potsdam(GFZ), 2008-08-27



Umfang: 99974 DataPoints.



Anmerkung: CreationDate: 2007-08-09

This dataset is cited by doi:10.1029/2006GC001388

SAFOD is motivated by the need to answer fundamental questions about the physical and chemical processes controlling faulting and earthquake generation within a major plate-bounding fault. **SAFOD** will drill and instrument an inclined borehole across the San Andreas Fault Zone to a depth of 3.2 km, targeting a repeating microearthquake source. The drill site is located west of the vertical San Andreas Fault on a segment of the fault that moves through a combination of aseismic creep and repeating microearthquakes. It lies at the extreme northern end of the rupture zone of the 1966, Magnitude 6 Parkfield earthquake, the most recent in a series of events that have ruptured the fault five times since 1857.
This data set contains open hole geophysical wireline logging data from 3387-3799m (measured depth relative to Kelly Bushing, which is 9,45m above ground level).

Technische Angaben: Format: text/tab-separated-values

Links: doi: [10.1594/GFZ.SDDB.1128](#)

URN: [urn:nbn:de:tib-10.1594/GFZ.SDDB.11286](#)

Bestandsinfo: [Anzeigen lizenzfrei!](#)

Anmerkung: Primaerdaten

1 von 14



Scientific Drilling Database

Data from Deep Earth Sampling and Monitoring

- + Home
- + About SDDB
- + News
- + Data Publications
- + Catalogue
- + Authors
- + Dataset
- + Research Programs
- + Sampling Gear
- + Analytical Parameters
- + Admin



Dataset Description

Citation: [SAFOD, ; \(2008\): SAFOD Main Hole downhole logging data phase 2 \(2005\), 3387-3799m. *Scientific Drilling Database*. doi:10.1594/GFZ.SDDB.1128](#)

[Download Citation \(EndNote\)](#)

DOI: 10.1594/GFZ.SDDB.1128

Title: SAFOD Main Hole downhole logging data phase 2 (2005), 3387-3799m

Abstract: SAFOD is motivated by the need to answer fundamental questions about the physical and chemical processes controlling faulting and earthquake generation within a major plate-bounding fault. SAFOD will drill and instrument an inclined borehole across the San Andreas Fault Zone to a depth of 3.2 km, targeting a repeating microearthquake source. The drill site is located west of the vertical San Andreas Fault on a segment of the fault that moves through a combination of aseismic creep and repeating microearthquakes. It lies at the extreme northern end of the rupture zone of the 1966, Magnitude 6 Parkfield earthquake, the most recent in a series of events that have ruptured the fault five times since 1857. The Parkfield region is the most comprehensively instrumented section of a fault anywhere in the world, and has been the focus of intensive study for the past two decades. This data set contains open hole geophysical wireline logging data from 3387-3799m (rel. to rig floor, 9,45m abv gnd)

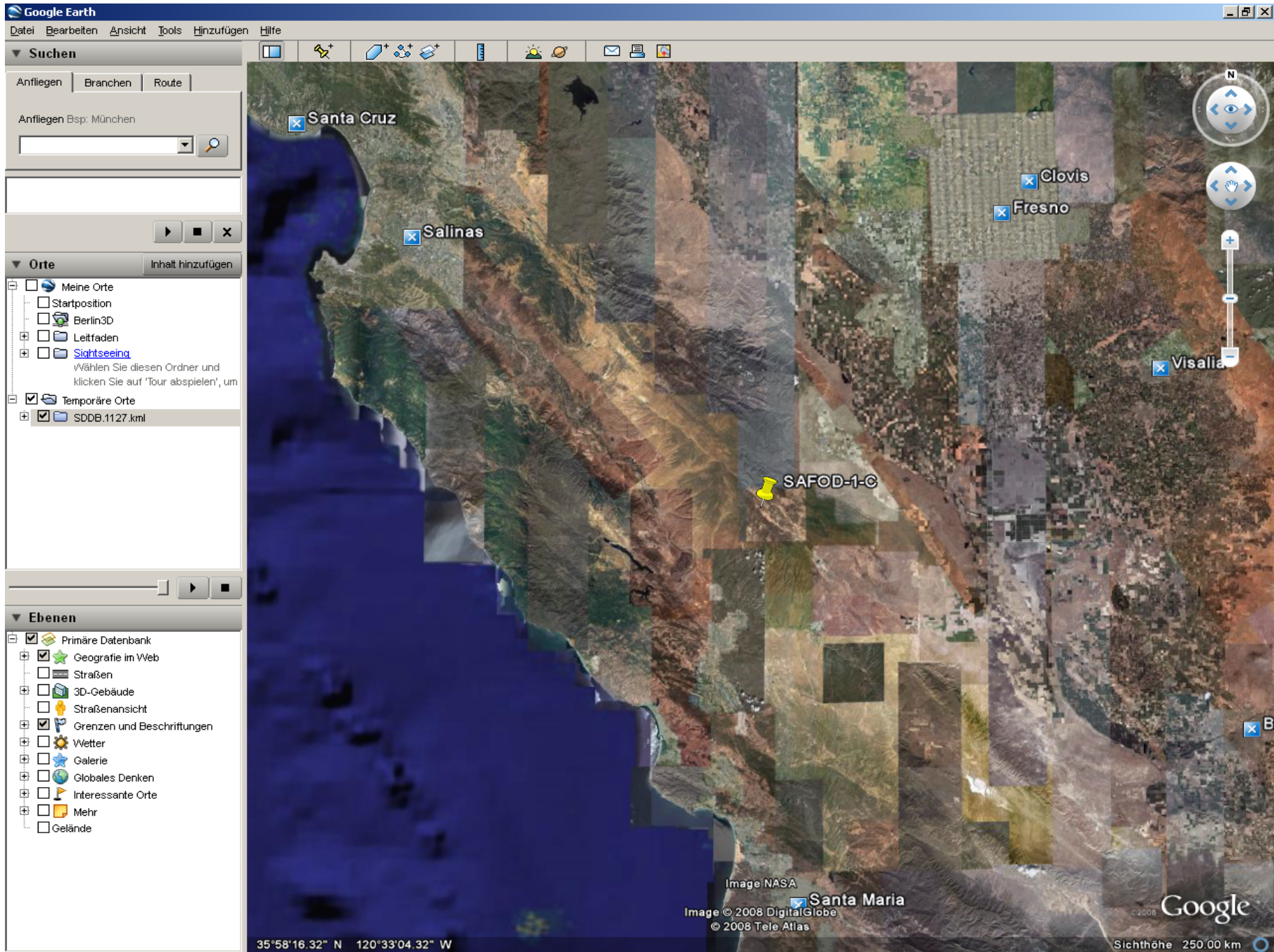
[Show in Google Earth](#)

Related Publications:

Activities: [SAFOD-1-C](#)

Latitude: 35.9712 °N

- Glossary
- Catalogue



Datapoints: 99974


Parameter(s):

	Parameter [Unit]	Principal Investigator	Method
<input type="checkbox"/>	Bit size [cm]	SAFOD	length
<input type="checkbox"/>	Caliper [cm]	SAFOD	not specified
<input type="checkbox"/>	Shear Wave Slowness [US/F]	SAFOD	calculation
<input type="checkbox"/>	Compressional Wave Slowness [US/F]	SAFOD	calculation
<input type="checkbox"/>	gamma ray [GAPI]	SAFOD	gamma ray logging
<input type="checkbox"/>	Shear to Compressional Slowness Ratio []	SAFOD	calculation
<input type="checkbox"/>	Differential Tension [N]	SAFOD	not specified
<input type="checkbox"/>	Cross Dipole Acoustic Anisotropy [%]	SAFOD	not specified
<input type="checkbox"/>	Cross Dipole Average Acoustic Anisotropy [%]	SAFOD	not specified
<input type="checkbox"/>	Pad 1Azimuth [°]	SAFOD	not specified
<input type="checkbox"/>	Bit size [cm]	SAFOD	length
<input type="checkbox"/>	Caliper [cm]	SAFOD	not specified
<input type="checkbox"/>	Borehole Drift Azimuth [°]	SAFOD	not specified
<input type="checkbox"/>	Hole Deviation [°]	SAFOD	not specified
<input type="checkbox"/>	Cross Dipole Fast Shear Wave Slowness [US/F]	SAFOD	calculation
<input type="checkbox"/>	Cross Dipole Slow Shear Wave Slowness [US/F]	SAFOD	calculation

<input type="checkbox"/>	Vert resolution matched (2 ft) res - DOI 30 inch [Ohmm]	SAFOD	calculation
<input type="checkbox"/>	Vert resolution matched (2 ft) res - DOI 60 inch [Ohmm]	SAFOD	calculation
<input type="checkbox"/>	Vert resolution matched (2 ft) res - DOI 90 inch [Ohmm]	SAFOD	calculation

Öffnen von dataset1128selection.csv

Sie möchten folgende Datei herunterladen:

 **dataset1128selection.csv**
Vom Typ: Microsoft Office Excel Comma Separated Values File
Von: http://www.icdp-online.org

Wie soll Firefox mit dieser Datei verfahren?

Öffnen mit: Microsoft Office Excel (Standard)

Auf Diskette/Festplatte speichern

Für Dateien dieses Typs immer diese Aktion ausführen

OK Abbrechen

Separator: Comma

This dataset is under the licence of Attribution Non-commercial Share Alike

I accept the [Terms and Conditions](#).

Download selected Download all



Suchergebnis sichern
Datenbankauswahl
Bestellung ohne Recherche
Benutzerinfo
TIB Homepage

■ Ihre Aktion suchen [und] (Alle Wörter) [potter peninsula](#) 1 von 2

Titel: [Geological map of Potter Peninsula](#) (King George Island, South Shetland Islands, Antarctic Peninsula)

Verfasser: [Stefan Kraus](#) ; [Rodolfo del Valle](#)

Beteiligt: [Instituto Antártico Chileno, Punta Arenas, Chile & Instituto Antártico Argentino, Buenos Aires, Argentina](#)

Erschienen: Bremen/Bremerhaven : PANGAEA - Publishing Network for Geoscientific & Environmental Data, 2008-02-29

Umfang: 1972.0 k Bytes.

Anmerkung: This dataset is cited by urn: urn:nbn:de:bvb:19-38277
This dataset is cited by hdl: 10013/epic.30038.d001
This dataset is cited by doi: 10.3133/of2007-1047.srp035
We present here a new geological map of **Potter Peninsula** (King George Island, South Shetland Islands). Like on adjacent Barton **Peninsula**, the morphology on **Potter Peninsula** is predominantly characterized by a glacial landscape with abrasion platforms offshore, in parts steep cliffs along the coast, and a rather smooth, hilly countryside in the interior. **Potter Peninsula** forms part of the downthrown Warszawa Block. The volcanic sequence cropping out here belongs to the King George Island Supergroup, with an observed local minimum thickness of approx. 90 m (Kraus 2005). The most prominent morphological feature is Three Brothers Hill (196 m), a well known andesitic plug showing conspicuous columnar jointing. It marks the final stage of activity of a Paleogene volcano, whose eruption products (lava flows and pyroclastic rocks), together with hypabyssal intrusions related to the volcanism, make up most of the lithology observed on **Potter Peninsula** (Kraus 2005).
The Three Brothers Hill volcanic complex is eroded down to its deepest levels. Thus, the stratigraphically deepest units from the initial phase of volcanic activity are cropping out in some parts (Kraus & del Valle, in Wienke et al. 2008). The lithology on **Potter Peninsula** comprises lava flows (~50%), pyroclastic rocks (ash-fallout, pyroclastic flow deposits, volcanic breccia and agglomerates, ~30%) and hypabyssal intrusions (dykes, sills and small subvolcanic intrusive bodies, ~20%). 40Ar/39Ar datings carried out on magmatic dykes from **Potter Peninsula** indicate a short, but intense intrusive event during the Lutetian (Kraus et al. 2007).

REFERENCE:
Kraus, Stefan (2005): Magmatic dyke systems of the South Shetland Islands volcanic arc (West Antarctica): reflections of the geodynamic history, Dissertation, LMU München: Fakultät für Geowissenschaften, 160 pp
Wiencke, Christian; Ferreyra, Gustavo A; Abele, Doris; Marensi, Sergio (2008): The Antarctic ecosystem of **Potter** Cove, King-George Island (Isla 25 de Mayo): Synopsis of research performed 1999-2006 at the Dallmann Laboratory and Jubany Station, Reports on Polar and Marine Research, Alfred Wegener Institute for Polar and Marine Research, Bremerhaven, 571, 411 pp
Kraus, Stefan; McWilliams, Michael; Pecsckay, Zoltan (2007): New 40Ar/39Ar and K/Ar ages of dikes in the South Shetland Islands (Antarctic **Peninsula**), In: Cooper A.K. & Raymond C.R. (eds.): Antarctica: A Keystone in a Changing World - Online Proceedings of the 10th ISAES, U.S. Geological Survey, Open-File Report 2007-1047, Short Research Paper, 035, 3

Technische Angaben: Format: application/pdf

Links: doi: [10.1594/PANGAEA.667386](https://doi.org/10.1594/PANGAEA.667386)
URN: [urn:nbn:de:tib-10.1594/PANGAEA.6673861](https://nbn-resolving.org/urn:nbn:de:tib-10.1594/PANGAEA.6673861)



Data Description

[RIS](#) [BIBTeX](#)

Citation: **Kraus, Stefan; del Valle, Rodolfo (2008): Geological map of Potter Peninsula (King George Island, South Shetland Islands, Antarctic Peninsula), Instituto Antártico Chileno, Punta Arenas, Chile & Instituto Antártico Argentino, Buenos Aires, Argentina, doi:10.1594/PANGAEA.667386**

Reference(s): **Kraus, Stefan (2005):** Magmatic dyke systems of the South Shetland Islands volcanic arc (West Antarctica): reflections of the geodynamic history, *Dissertation, LMU München: Fakultät für Geowissenschaften*, 160 pp, [urn:nbn:de:bvb:19-38277](#)

Wiencke, Christian; Ferreyra, Gustavo A; Abele, Doris; Marensi, Sergio (2008): The Antarctic ecosystem of Potter Cove, King-George Island (Isla 25 de Mayo): Synopsis of research performed 1999-2006 at the Dallmann Laboratory and Jubany Station, *Reports on Polar and Marine Research, Alfred Wegener Institute for Polar and Marine Research, Bremerhaven*, **571**, 411 pp, [hdl:10013/epic.30038.d001](#)

Kraus, Stefan; McWilliams, Michael; Pecskey, Zoltan (2007): New ⁴⁰Ar/³⁹Ar and K/Ar ages of dikes in the South Shetland Islands (Antarctic Peninsula), *In: Cooper A.K. & Raymond C.R. (eds.): Antarctica: A Keystone in a Changing World – Online Proceedings of the 10th ISAES, U.S. Geological Survey, Open-File Report 2007-1047, Short Research Paper*, **035**, 3, [doi:10.3133/of2007-1047.srp035](#)

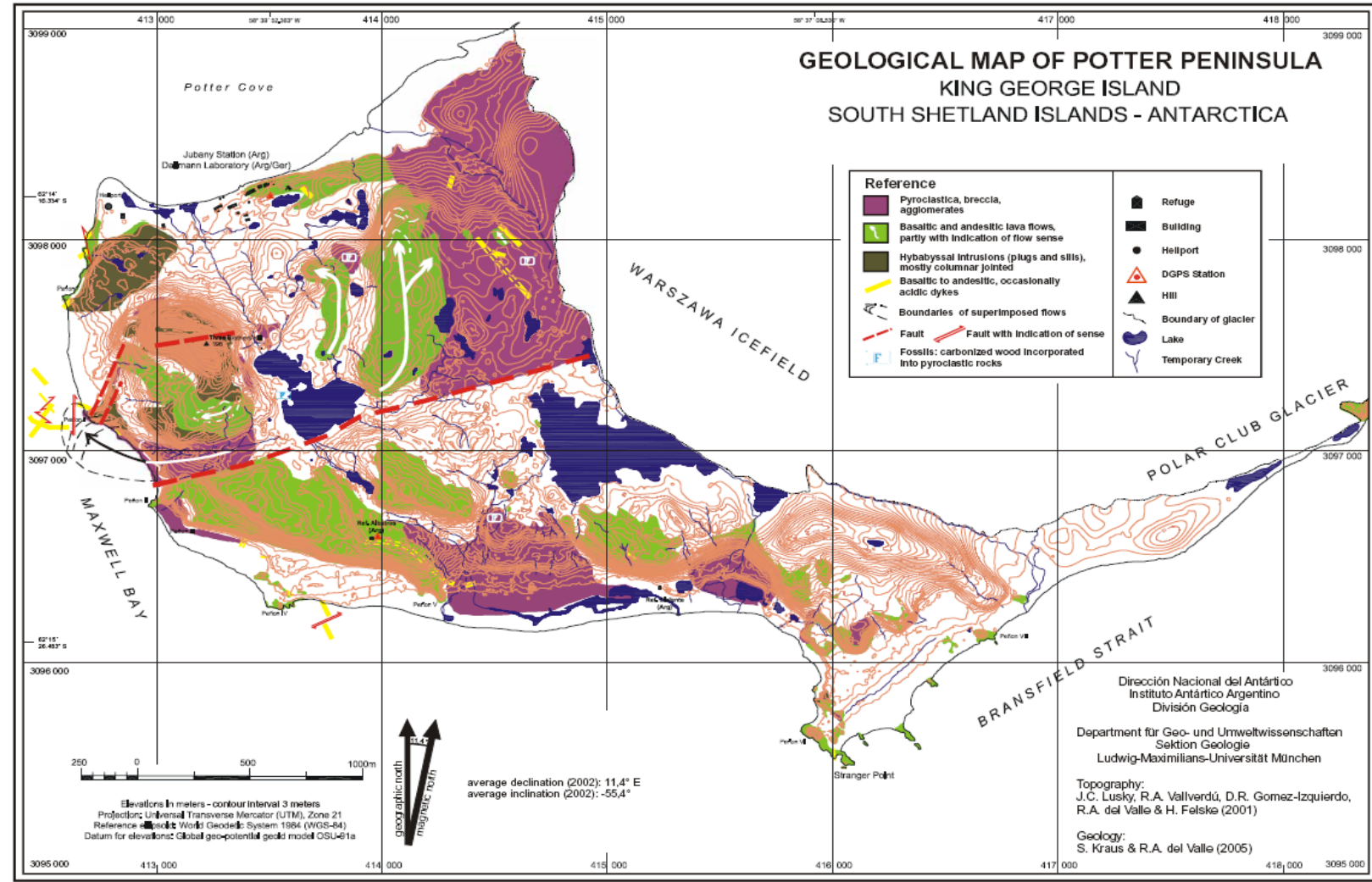
Abstract: We present here a new geological map of Potter Peninsula (King George Island, South Shetland Islands). Like on adjacent Barton Peninsula, the morphology on Potter Peninsula is predominantly characterized by a glacial landscape with abrasion platforms offshore, in parts steep cliffs along the coast, and a rather smooth, hilly countryside in the interior. Potter Peninsula forms part of the downthrown Warszawa Block. The volcanic sequence cropping out here belongs to the King George Island Supergroup, with an observed local minimum thickness of approx. 90 m (Kraus 2005). The most prominent morphological feature is Three Brothers Hill (196 m), a well known andesitic plug showing conspicuous columnar jointing. It marks the final stage of activity of a Paleogene volcano, whose eruption products (lava flows and pyroclastic rocks), together with hypabyssal intrusions related to the volcanism, make up most of the lithology observed on Potter Peninsula (Kraus 2005).

The Three Brothers Hill volcanic complex is eroded down to its deepest levels. Thus, the stratigraphically deepest units from the initial phase of volcanic activity are cropping out in some parts (Kraus & del Valle, in Wienke et al. 2008). The lithology on Potter Peninsula comprises lava flows (~50%), pyroclastic rocks (ash-fallout, pyroclastic flow deposits, volcanic breccia and agglomerates, ~30%) and hypabyssal intrusions (dykes, sills and small subvolcanic intrusive bodies, ~20%). ⁴⁰Ar/³⁹Ar datings carried out on magmatic dykes from Potter Peninsula indicate a short, but intense intrusive event during the Lutetian (Kraus et al. 2007).

Size: 1972.0 kBytes

Download Data

Seiten
Anlagen
Kommentare





Forschungsdaten in Science Direct

Home + Recent Actions	Browse	Search	My Settings	Alerts	Help
-----------------------	--------	--------	-------------	--------	------

Quick Search All fields Author
 search tips Journal/book title Volume Issue Page Clear Go [Advanced Search](#)

Marine Chemistry

Volume 95, Issues 1-2, 2 May 2005, Pages 51-63

 Font Size:

Article
 Figures/Tables
 References
 PDF (931 K)

[Thumbnails](#) | [Full-Size Images](#)

doi:10.1016/j.marchem.2004.06.040

[Cite or Link Using DOI](#)

Copyright © 2004 Elsevier B.V. All rights reserved.

Changes in the concentration of iron in different size fractions during an iron enrichment experiment in the open Southern Ocean

 Jun Nishioka^a, Shigenobu Takeda^b, Hein J.W. de Baar^c, Peter L. Croot^{c, d}, Marie Boye^c, Patrick Laan^c and Klaas R. Timmermans^c
^aCentral Research Institute of Electric Power Industry, 1646 Abiko, Abiko-shi, Chiba 270-1194, Japan

^bDepartment of Aquatic Bioscience, University of Tokyo, Bunkyo, Tokyo 113-8657, Japan

^cRoyal Netherlands Institute for Sea Research, 1790 AB Den Burg, Texel, The Netherlands

^dMarine Biogeochemie, Institute für Meereskunde und Universität Kiel, D-24105 Kiel, Germany

Received 2 September 2003; revised 17 March 2004; accepted 16 June 2004. Available online 30 December 2004.

Abstract

An in situ iron enrichment experiment was carried out in the Southern Ocean Polar Frontal Zone and fertilized a patch of water within an eddy of the Antarctic Circumpolar Current (EisenEx, Nov. 2000). During the experiment, a physical speciation technique was used for iron analysis in order to understand the changes in iron distribution and size-fractionations, including soluble Fe (<200 kDa), colloidal Fe (200 kDa–0.2 μm) and labile particle Fe (>0.2 μm), throughout the development of the phytoplankton bloom.

Prior to the first infusion of iron, dissolved (<0.2 μm) iron concentrations in the ambient surface seawater were extremely low (0.06±0.015 nM) with colloidal iron being a minor fraction. For the iron addition, an acidified FeSO₄ solution was released three times over a 23-day period to the eddy. High levels of dissolved iron concentrations (2.0±1.1 nM) were measured in the surface water until 4 days after the first iron infusion. After every iron infusion, when high iron concentrations were observed before storm events, there was a significant correlation between colloidal and dissolved iron concentrations ([Colloidal Fe]=0.7627[Dissolved Fe]+0.0519, R²=0.9346). These results indicate that a roughly constant proportion of colloidal vs. dissolved iron was observed after iron infusion (~76%). Storm events caused a significant decrease in iron concentrations (<0.61 nM in dissolved iron) and changed the proportions of the three iron size-fractions (soluble, colloidal and labile particle). The changes in each iron size-fraction indicate that colloidal iron was eliminated from surface mixed layer more easily than particulate and soluble fractions. Therefore, particle and soluble iron efficiently remain in the mixed layer, probably due to the presence of suspended particles and naturally dissolved organic ligands. Our data suggest that iron removal through colloidal aggregation during phytoplankton bloom should be considered in the oceanic iron cycle.

Article Toolbox

- Download PDF
- E-mail Article
- Cited By
- Save as Citation Alert
- Citation Feed
- Export Citation
- Add to my Quick Links
- Add to **collab**
- Permissions & Reprints
- Cited By in Scopus (16)

Related Articles in ScienceDirect

- Major deviations of iron complexation during 22 days of...
Marine Chemistry
- Iron cycling and nutrient-limitation patterns in surfac...
Deep Sea Research Part II: Topical Studies in Oceanogra...
- Net and gross O₂ production in the southern ocean from ...
Deep Sea Research Part I: Oceanographic Research Papers
- Modelling ice-edge phytoplankton bloom in the Scotia-We...
Journal of Marine Systems
- Insights into Southern Ocean carbon export from the [de...
Deep Sea Research Part II: Topical Studies in Oceanogra...

[View More Related Articles](#)

Supplementary Data

[View Record in Scopus](#)

The research collaboration tool

- No user rating
- No user tags yet

Nishioka, J et al. (2008): Profiles of iron concentration from GoFlow bottles during the CARUSO-EISENEX experiment - M...

Datei Bearbeiten Ansicht Chronik Lesezeichen Extras Hilfe

http://doi.pangaea.de/10.1594/PANGAEA.701305

Meistbesuchte Seiten Erste Schritte Aktuelle Nachrichten - ...

 **PANGAEA®**
Publishing Network for Geoscientific & Environmental Data *Always quote citation when using data!*

You are not logged in (LOG IN)

Advanced Search

Font Size: 

Thumbnail | Full-Size Images

Data Description [RIS](#) [BIBTeX](#)

Citation: Nishioka, J et al. (2008): Profiles of iron concentration from GoFlow bottles during the CARUSO-EISENEX experiment, doi:10.1594/PANGAEA.701305, Supplement to: Nishioka, Jun; Takeda, Shigenobu; de Baar, Hein JW; Croot, Peter L; Boyé, Marie; Laan, Patrick; Timmermans, Klaas R (2005): Changes in the concentration of iron in different size fractions during an iron enrichment experiment in the open Southern Ocean, *Marine Chemistry*, 95(1-2), 51-63, doi:10.1016/j.marchem.2004.06.040

Reference(s): Boyé, Marie; Nishioka, Jun; Croot, Peter L; Laan, Patrick; Timmermans, Klaas R; de Baar, Hein JW (2005): Major deviations of iron complexation during 22 days of a mesoscale iron enrichment in the open Southern Ocean, *Marine Chemistry*, 96(3-4), 257-271, doi:10.1016/j.marchem.2005.02.002

Croot, Peter L; Laan, Patrick; Nishioka, Jun; Strass, Volker; Cisewski, Boris; Boyé, Marie; Timmermans, Klaas R; Bellerby, Richard G J; Goldson, Laura; Nightingale, Philip D; de Baar, Hein JW (2005): Spatial and temporal distribution of Fe(II) and H₂O₂ during EisenEx: an open ocean mesoscale iron enrichment. *Marine Chemistry* 95(1-2)

Fertig

Abstract

An in situ iron enrichment experiment was carried out in the Southern Ocean Polar Frontal Zone and fertilized a patch of water within an eddy of the Antarctic Circumpolar Current (EisenEx, Nov. 2000). During the experiment, a physical speciation technique was used for iron analysis in order to understand the changes in iron distribution and size-fractionations, including soluble Fe (<200 kDa), colloidal Fe (200 kDa–0.2 µm) and labile particle Fe (>0.2 µm), throughout the development of the phytoplankton bloom.

Prior to the first infusion of iron, dissolved (<0.2 µm) iron concentrations in the ambient surface seawater were extremely low (0.06±0.015 nM) with colloidal iron being a minor fraction. For the iron addition, an acidified FeSO₄ solution was released three times over a 23-day period to the eddy. High levels of dissolved iron concentrations (2.0±1.1 nM) were measured in the surface water until 4 days after the first iron infusion. After every iron infusion, when high iron concentrations were observed before storm events, there was a significant correlation between colloidal and dissolved iron concentrations ([Colloidal Fe]=0.7627[Dissolved Fe]+0.0519, R²=0.9346). These results indicate that a roughly constant proportion of colloidal vs. dissolved iron was observed after iron infusion (~76%). Storm events caused a significant decrease in iron concentrations (<0.61 nM in dissolved iron) and changed the proportions of the three iron size-fractions (soluble, colloidal and labile particle). The changes in each iron size-fraction indicate that colloidal iron was eliminated from surface mixed layer more easily than particulate and soluble fractions. Therefore, particle and soluble iron efficiently remain in the mixed layer, probably due to the presence of suspended particles and naturally dissolved organic ligands. Our data suggest that iron removal through colloidal aggregation during phytoplankton bloom should be considered in the oceanic iron cycle.

Oost Ende is logged in
[Logout](#)

Article Toolbox

- Download PDF
- E-mail Article
- Cited By
- Save as Citation Alert
- Citation Feed
- Export Citation
- Add to my Quick Links
- Add to  collab
- Permissions & Reprints
- Cited By in Scopus (16)

Related Articles in ScienceDirect

- Major deviations of iron complexation during 22 days of... *Marine Chemistry*
- Iron cycling and nutrient-limitation patterns in surfac... *Deep Sea Research Part II: Topical Studies in Oceanogra...*
- Net and gross O₂ production in the southern ocean from ... *Deep Sea Research Part I: Oceanographic Research Papers*
- Modelling ice-edge phytoplankton bloom in the Scotia-We... *Journal of Marine Systems*
- Insights into Southern Ocean carbon export from the [de... *Deep Sea Research Part II: Topical Studies in Oceanogra...*

[View More Related Articles](#)

 Supplementary Data
[View Record in Scopus](#)

 **The research collaboration tool** 

  No user rating

 No user tags yet



Forschungsdaten in Artikeln

Go to Search for in
[Advanced Search](#) [Search Tips](#) [Marked List](#)

> [Home](#) > [At a Glance](#) > [OECD Factbook](#)

OECD Factbook 2008: Economic, Environmental and Social Statistics

Population and migration

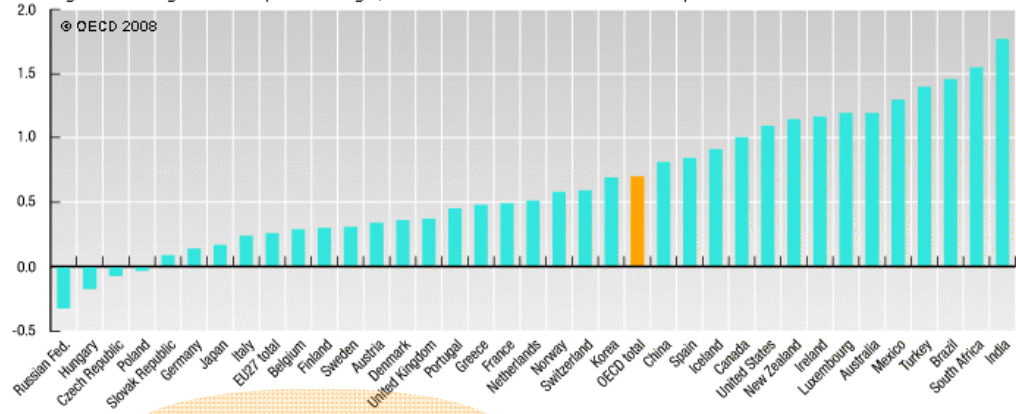
Total population

Evolution of the population

BAC

Population growth rates

Average annual growth in percentage, 1993-2006 or latest available period



Statlink StatLink <http://dx.doi.org/10.1787/266252532287>

Microsoft Excel - 01-01-01-g2.xls [Schreibgeschützt]

Frage hier eingeben

File Edit View Insert Format Extras Data Window Help Adgbe PDF

100% Arial 7

Bearbeitung zurücksenden... Bearbeitung beenden...

A1 OECD Factbook 2008: Economic, Environmental and Social Statistics - ISBN 92-64-04054-4 - © OECD 2008

1 OECD Factbook 2008: Economic, Environmental and Social Statistics - ISBN 92-64-04054-4 - © OECD 2008

2 Population and migration - Total population - Evolution of the population

3 **Population growth rates**

4 Average annual growth in percentage, 1993-2006 or latest available period

5	Russian Feder	-0,322278887
6	Hungary	-0,172142379
7	Czech Republic	-0,067283607
8	Poland	-0,034688598
9	Slovak Republ	0,087655955
10	Germany	0,143493548
11	Japan	0,172082846
12	Italy	0,241860169
13	EU27 total	0,262229563
14	Belgium	0,285686898
15	Finland	0,298286372
16	Sweden	0,307461147
17	Austria	0,340314319
18	Denmark	0,356931799
19	United Kingdom	0,367511307
20	Portugal	0,446321725
21	Greece	0,48331491
22	France	0,485678211
23	Netherlands	0,51410035
24	Norway	0,583854878
25	Switzerland	0,590623876
26	Korea	0,68508827
27	OECD total	0,697299884
28	China	0,808715215
29	Spain	0,840706194
30	Iceland	0,910140166
31	Canada	0,995288162
32	United States	1,094072456
33	New Zealand	1,141622137
34	Ireland	1,15791291
35	Luxembourg	1,19003114
36	Australia	1,190377512
37	Mexico	1,292229324
38	Turkey	1,399238822
39	Brazil	1,459936547
40	South Africa	1,552324305
41	India	1,772799758

Neustrukturierung

- Bisher war die TIB einzige DOI Registrierungsagentur für Forschungsdaten mit lokalen Datenzentren als Partnern.
- 1999 gründeten die Verlage ihre unabhängige DOI-Agentur Crossref.
- 2009 wird die TIB eine neue unabhängige **globale** DOI Agentur gründen, getragen von **lokalen** Informationseinrichtungen und Bibliotheken.

Vorteile

- Zugang zum DOI System für nicht-kommerzielle **Informationseinrichtungen** und **Bibliotheken** weltweit.
- Zugang zu Forschungsdaten ist Teil der nationalen Strategien und Aufgaben. Da Wissenschaft global ist, benötigen wir eine **globale Kooperation** mit **lokalen Verantwortlichen**.

Partner 2009:

- Bibliothek der ETH Zürich, Schweiz
- L'Institut de l'Information Scientifique et Technique (INIST), Frankreich
- Bibliothek der TU Delft, Niederlande
- Technical Information Center of Denmark
- British Library



Deutsche Partner

TIB

Technik, Architektur,
Chemie, Informatik,
Mathematik und
Physik



ZBW

Wirtschafts-
wissenschaften

ZB MED

Medizin,
Gesundheit,
Ernährung,
Lebens-
wissenschaften,
Umwelt und
Agrar.

Vielen Dank für Ihre Aufmerksamkeit!

