

Forschung in Deutschland

2014-2017 Impact

Ben McLeish, Altmetric
ben@altmetric.com

Vorgang

- Schritt 1: Publikationsdaten gesammelt fuer:
 - Uni Heidelberg
 - LMU Munchen
 - Freie Uni Berlin
- Schritt 2:
 - Daten in den Altmetric Explorer abgesucht/Verglichen
- Schritt 3:
 - Interessante Daten, Action Points



Vergleich auf Uni-Ebene

LMU Munchen

# Publikationen	18,507
Publikationen online erwaeht	9,282
% Publikationen erwaeht	50%
Gesamtzahl # Erwaehnungen	106,844
Avg. # mentions/output	11.5
# Zeitschriften	2,423
Mean Altmetric Attention Score	
Median Altmetric Attention Score	
# verschiedene Quellen	

Freie Uni Berlin

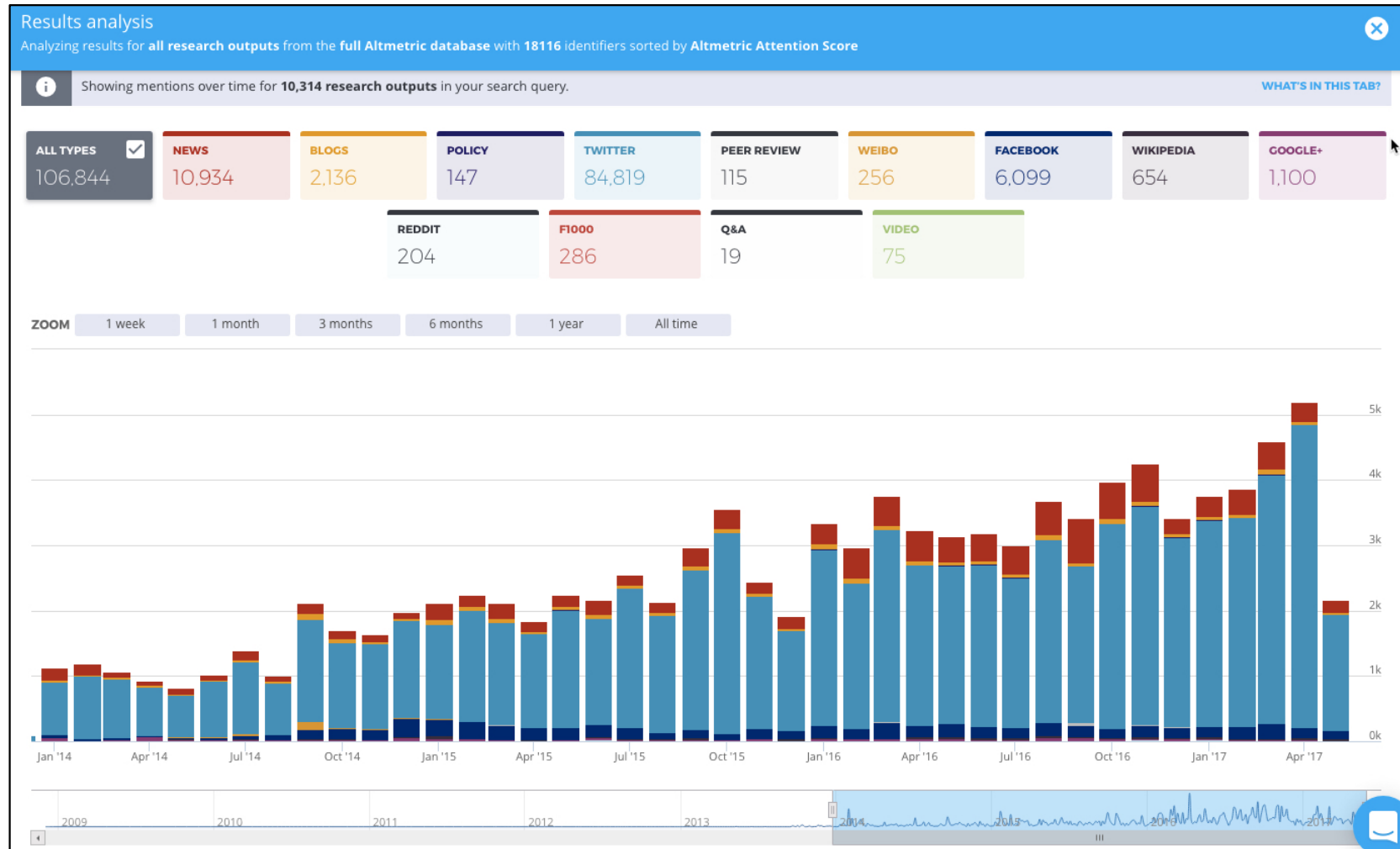
# Publikationen	17,839
Publikationen online erwaeht	5,155
% Publikationen erwaeht	31%
Gesamtzahl # Erwaehnungen	47,255
Durchschn. Erwaehnungen	9
# Zeitschriften	1,783
Mean Altmetric Attention Score	9.2
Median Altmetric Attention Score	1
# verschiedene Quellen	15

Uni Heidelberg

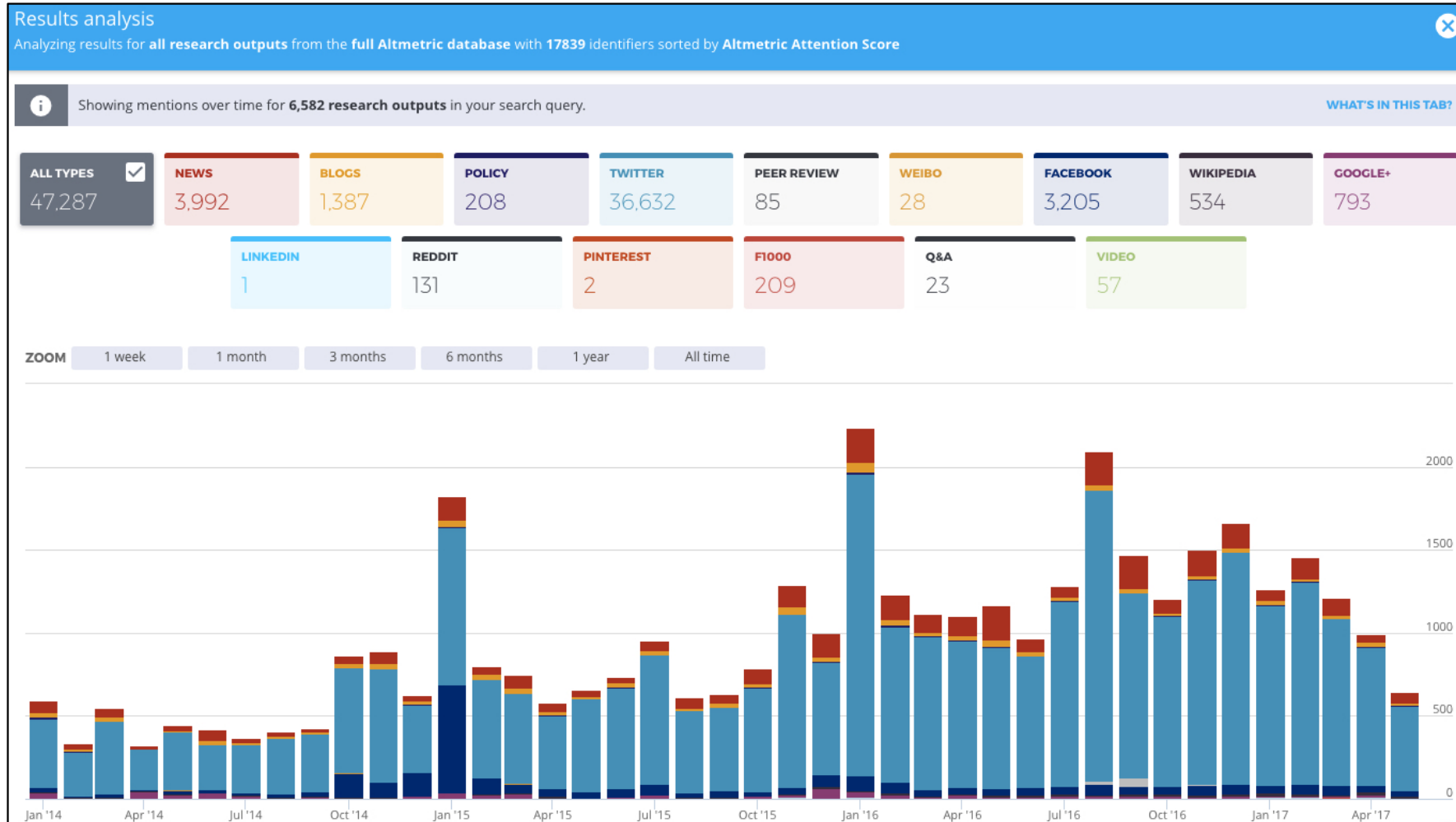
# Publikationen	18,166
Publikationen online erwaeht	9,468
% Publikationen erwaeht	52%
Gesamtzahl # Erwaehnungen	106,801
Avg. # mentions/output	11.2
# Zeitschriften	
Mean Altmetric Attention Score	9.09
Median Altmetric Attention Score	1
# verschiedene Quellen	15



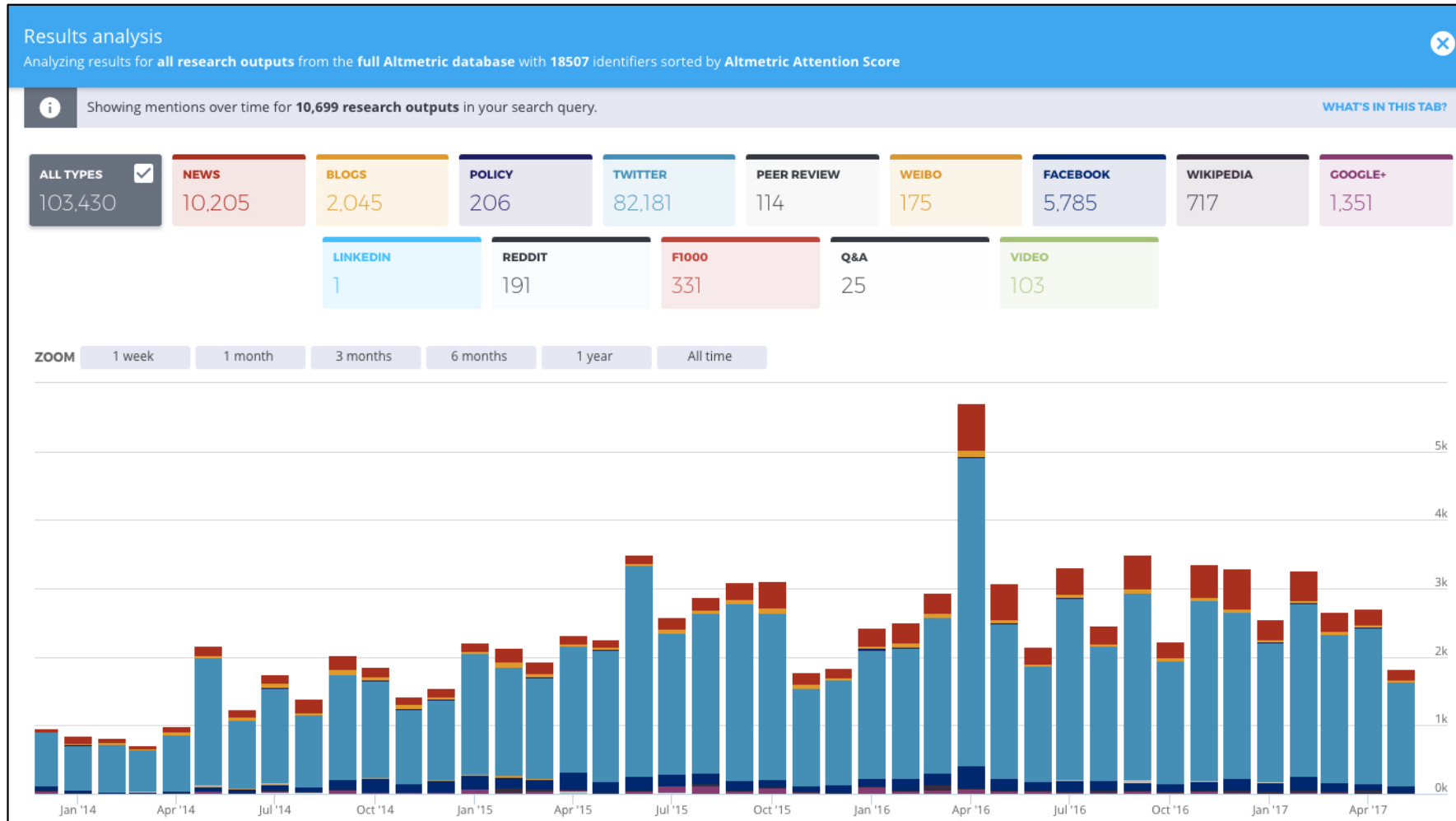
LMU Erwaehnungen – Übersicht



FU Berlin – Übersicht



LMU Erwaehnungen – Übersicht




Action Points: LMU – Negative Anmerkungen

- PubPeer Kommentar muss dringend evaluiert werden. Negativ?

Peer review
Ben Goldacre | Aug 24 2016 05:33 EST **This trial has the wrong trial registry ID associated with it on PubMed**

 **Rivaroxaban for Stroke Prevention in East Asian Patients From the ROCKET AF Trial**
Article in Stroke, April 2014

Peer review
There is some disagreement over the analysis and conclusions:<http://biorxiv.org/content/early/2016/10/04/079202>

 **Correlated gene expression supports synchronous activity in brain networks.**
Article in Science, June 2015



Action Points: LMU – Positive Anmerkungen

- Wissen die Autoren, sie haben F1000 Recommendations? (331!)

The image shows a vertical timeline with two entries. Each entry is marked with a red graduation cap icon and the text 'Recommended in F1000 Prime'. The first entry is dated '2017-03-20 12:00 AM UTC' and features a circular icon with the number '2'. The second entry is dated '12:00 AM UTC' and features a circular icon with the number '11'. Both entries include the title of the article and the journal it was published in.

Date	Article Title	Journal
2017-03-20 12:00 AM UTC	Variability and prognostic relevance of different phenotypes in amyotrophic lateral sclerosis - Data from a population-based registry.	Journal of the Neurological Sciences
12:00 AM UTC	Factors Predicting Survival in ALS Patients - Data from a Population-Based Registry in Rhineland-Palatinate, Germany.	Neuroepidemiology



Action Points: LMU – positive Nutzung

- LMU Daten werden in Policy Eingesetzt

2017-02-09
12:00 AM UTC



THC, CBD en gezondheidseffecten van wiet en hasj: Update 2016
Policy document published by overheid.nl

 **Cerebrospinal fluid anandamide levels, cannabis use and psychotic-like symptoms**
Article in British Journal of Psychiatry, April 2013

 **Increased CB2 mRNA and anandamide in human blood after cessation of cannabis abuse.**
Article in Naunyn-Schmiedeberg's Archives of Pharmacology, May 2014



FU Berlin

- Warum ist das Engagement 20% niedriger als LMU/Heidelberg?
 - 11,000 nicht in Mendeley gespeichert, kommen nicht in Altmetric vor.
 - Vielleicht in Forschungsgebieten mit wenigerem „Social Interest“?
 - Kann Kommunikation/Presse verbessert werden? Daten wenigstens einmal auf Soziale Medien verteilt werden?
 - Obwohl weniger Erwähnungen, Policy Erwähnung und F1000 starker Teil des Impacts. Zum Teil höher als





Evaluation of the egg hatch assay and the larval migration inhibition assay...

Article in **Parasitology International**, June 2012



A mechanistic account of value computation in the human brain

Article in **Proceedings of the National Academy of Sciences of the United States of America**, May 2010



Novel protein folds and their nonsequential structural analogs

Article in **Protein Science**, January 2009



Identification of FOXP1 Deletions in Three Unrelated Patients with Mental...

Article in **Human Mutation**, September 2010



Knockdown of FoxP2 alters spine density in Area X of the zebra finch.

Article in **Genes, Brain & Behavior**, July 2010



Regioselective Nucleophilic Aromatic Substitution Reaction of meso...

Article in **European Journal of Organic Chemistry**, January 2015



Quantum Size Effects in the Size-Temperature Phase Diagram of Gallium:...

Article in **Chemistry - A European Journal**, December 2014



STRUCTURAL VECTOR AUTOREGRESSIONS: CHECKING IDENTIFYING LONG-RUN RESTRICTIONS...

Article in **Journal of Economic Surveys**, December 2014



Renormalization group analysis of thermal transport in the disordered Fermi...

Article in **Physical Review B: Condensed Matter and Materials Physics**



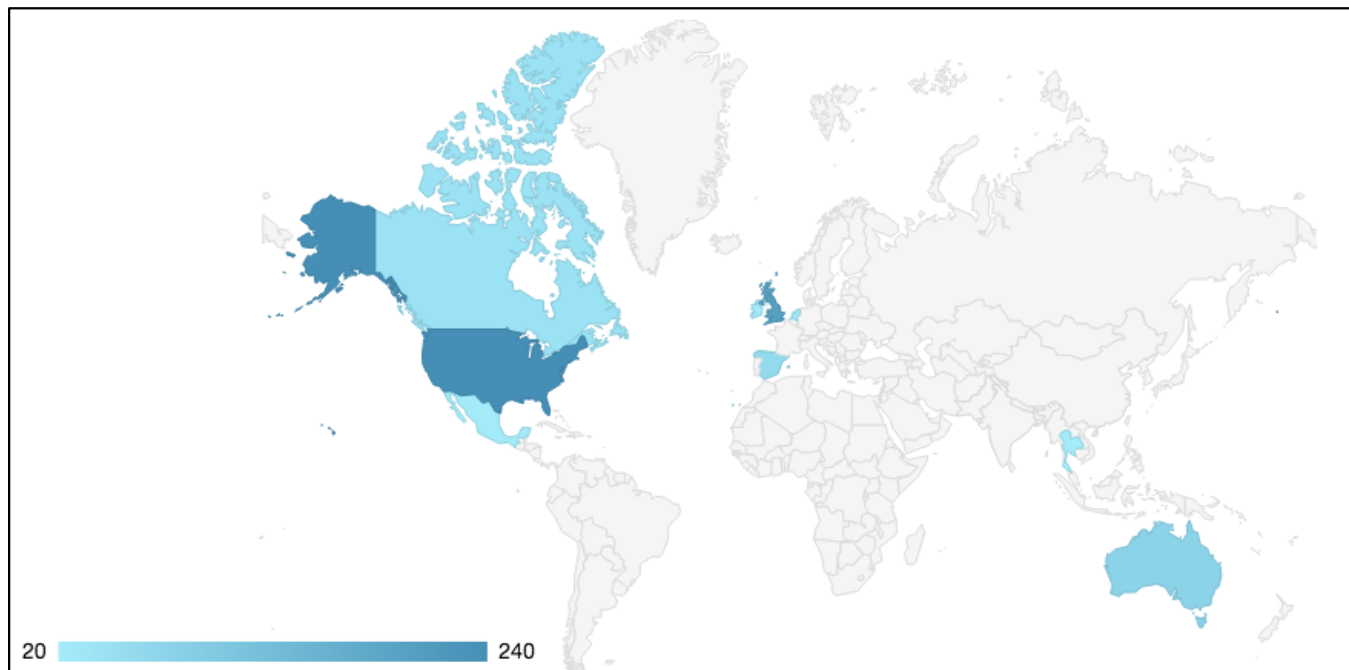
Role of 5-HT1A- and 5-HT2A receptors for the murine model of the serotonin...

Article in **Journal of Pharmacological & Toxicological Methods**



Heidelberg Highlights – Top Artikel 2014-2017

„Trends in adult body-mass index in 200 countries from 1975 to 2014: a pooled analysis of 1698 population-based measurement studies with 19.2 million participants“ –
Lancet, April 2016



Mentioned by

- 202 news outlets
- 21 blogs
- 3 policy sources
- 1687 tweeters
- 131 Facebook pages
- 1 Wikipedia page
- 10 Google+ users
- 3 Redditors

Citations





- 210 Scopus

Readers on

- 166 Mendeley
- 1 CiteULike



Top Artikel rasch in Policy Docs erwaeht (12 Monate)

	<p>Double-duty actions for nutrition: policy brief Cited by World Health Organization on 01 Jan 2017 The World Health Organization (WHO) is the directing and coordinating authority for health within the United Nations system.</p>
	<p>IFPRI 2017 Global Food Policy Report Cited by Food and Agriculture Organization of the United Nations on 01 Jan 2017 The Food and Agriculture Organization (FAO) of the United Nations is an intergovernmental organization whose mission is to achieve food security, ensuring that people have regular access to enough high-quality food to lead active, healthy lives.</p>
	<p>An Investment Framework for Nutrition : Reaching the Global Targets for Stunting, Anemia, Breastfeeding and Wasting Cited by World Bank on 30 Sep 2016 The World Bank is a United Nations international financial institution that provides loans to developing countries for capital programs. The World Bank is a component of the World Bank Group, and a member of the United Nations Development Group. The World Bank's mission is to end extreme poverty within a generation and boost shared prosperity.</p>
	<p>The double burden of malnutrition: policy brief Cited by World Health Organization on 01 Jan 2016 The World Health Organization (WHO) is the directing and coordinating authority for health within the United Nations system.</p>



Combating malnutrition in all its forms is one of the greatest global health challenges. Influenced by economic and income growth, urbanization and globalization, a significant shift in the quality and quantity of human diets and nutrition-related epidemiology has occurred in the past few decades (3, 4). Nutrition and associated epidemiological and demographic transitions were once accepted as near-linear, gradual processes. Instead, countries are now experiencing a fast-evolving and more complex nutrition paradigm.

Today, nearly one in three persons globally suffers from at least one form of malnutrition: wasting, stunting, vitamin and mineral deficiency, overweight or obesity, and diet-related NCDs. In 2014, approximately 4



million adults worldwide were underweight, while 1.9 billion were either overweight or obese (5). In 2016, an estimated 41 million children under the age of 5 years were overweight or obese, while 155 million were chronically undernourished (6). Nutrition-related factors contribute to approximately 45% of deaths in children aged under 5 years (mainly due to undernutrition), while low- and middle-income countries are now witnessing a simultaneous rise in childhood overweight and obesity (7, 8).

4. Food and Agriculture Organization of the United Nations, International Fund for Agricultural Development, World Food Programme. The state of food insecurity in the World 2015. Meeting the 2015 international hunger targets: taking stock of uneven progress. Rome: Food and Agriculture Organization of the United Nations; 2015 (<http://www.fao.org/3/a4ef2d16-70a7-460a-a9ac-2a65a533269a/i4646e.pdf>, accessed 1 February 2017).
5. NCD Risk Factor Collaboration. Trends in adult body-mass index in 200 countries from 1975 to 2014: a pooled analysis of 1698 population-based measurement studies with 19.2 million participants. *The Lancet*. 2016;387(10026):1377-1396. doi:10.1016/S0140-6736(16)30054-X.
6. Levels and trends in child malnutrition. UNICEF/WHO/World Bank Group joint malnutrition estimates. Key findings of the 2017 edition. New York/Geneva/Washington DC: The United Nations Children's Fund, the World Health Organization and the World Bank Group; 2017.
7. Children: reducing mortality. Factsheet. Geneva: World Health Organization; 2016 (<http://www.who.int/mediacentre/factsheets/fs178/en/>, accessed 1 February 2017).
8. *World Health Statistics Quarterly*. 2007(2):145-54. doi:10.1002/bies.20522.
16. Bruce KD, Hanson MA. The developmental origins, mechanisms, and implications of metabolic syndrome. *J Nutr*. 2010;140(3):648-52. doi:10.3945/jn.109.111179.
17. Godfrey KM, Reynolds RM, Prescott SL, Nyirenda M, Jaddoe VW, Eriksson JG et al. Influence of maternal obesity on the long-term health of the child. *Lancet Diabetes Endocrinol*. 2016;5(1):53-64. doi:10.1016/S2213-8587(16)30107-3.
18. Schellong K, Schulz S, Harder T, Plagemann A. Birth weight and long-term overweight risk: systematic review and a meta-analysis including 643,902 persons from 66 studies and 26 countries globally. *PLoS One*. 2012;7(10):e47776. doi:10.1371/journal.pone.0047776.
19. Dietz WH, Baur LA, Hall K, Puhl RM, Taveras EM, Uauy R et al. Management of obesity: improvement of health-care training and systems for prevention and care. *Lancet*. 2015;385(9986):2521-33. doi: 10.1016/S0140-6736(14)61748-7.
20. Rising food prices. Causes and consequences. Paris: Organisation for Economic Cooperation and Development; 2008 (<http://www.oecd.org/trade/agricultural-trade/40847088.pdf>, accessed 1 February 2017).



Weitere Interessante Highlights

Credit: Mark Burnett

Does Color Really Affect How You Act?

Published on Apr 6, 2017
The Internet has a lot to say about how color affects our mood and behavior, but it's not as out and dry as it may sound.

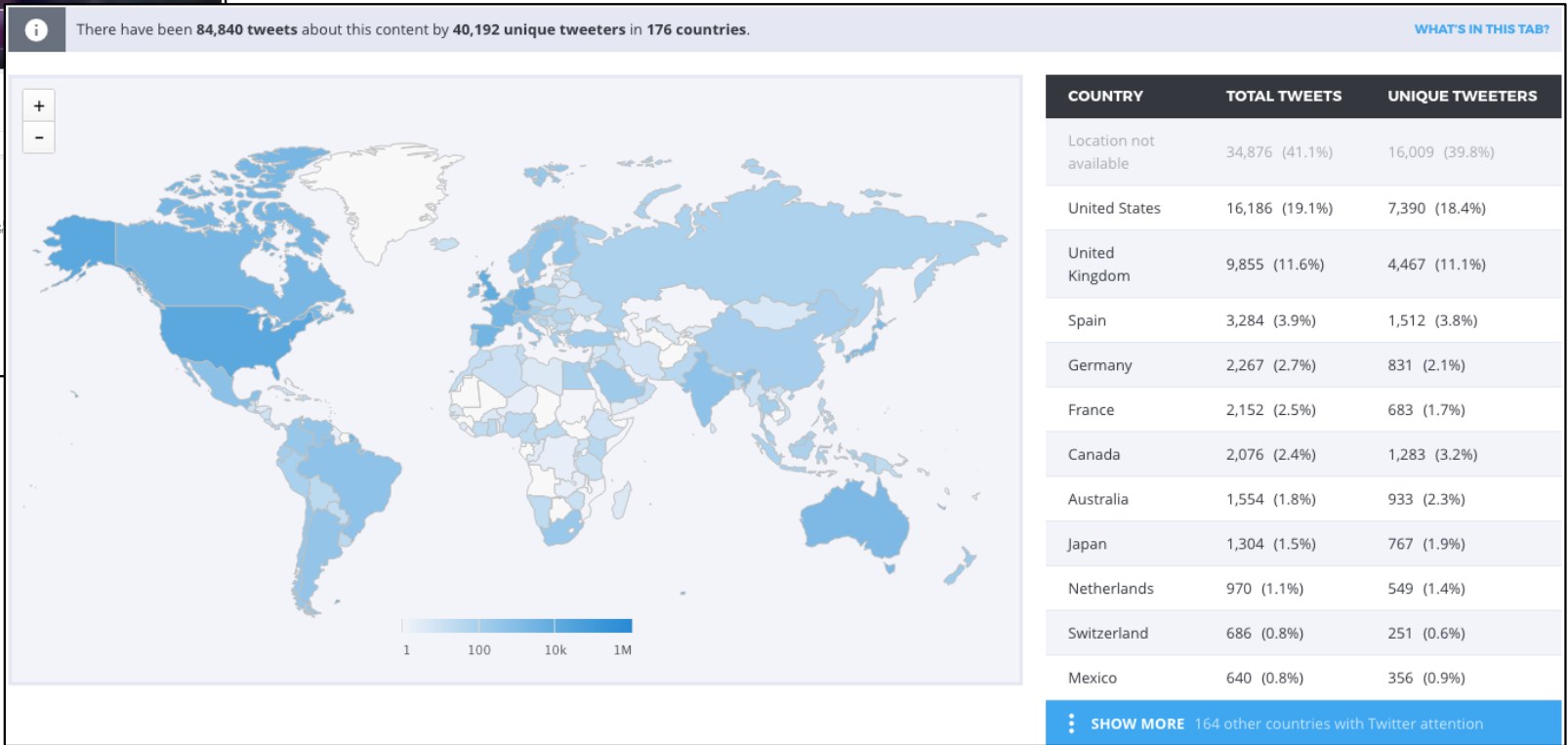
Hosted by: Britt Garner

Support SciShow by becoming a patron on Patreon: <https://www.patreon.com/scishow>

Dooblydoo thanks go to the following Patreon supporters—we couldn't make SciShow without them! Shout out to Kevin Bealer, Mark Terrio-Cameron, Patrina Isiah, Benmy, Kyle Anderson, Tim Curwick, Scott Salovsky Jr, Will and Sonja Margle, Philippe von Bergen, Bella Nash, Bryce Darfuku, Chris Peter

Looking for SciShow elsewhere on the internet?
Facebook: <http://www.facebook.com/scishow>
Twitter: <http://www.twitter.com/scishow>
Tumblr: <http://scishow.tumblr.com>
Instagram: <http://instagram.com/scishow>

Sources:
<https://www.psychologytoday.com/blog/...>
<https://thelibrarycompany.net/blog/100-...>
<http://journals.sagepub.com/doi/abs/10...>
<http://www.annualreviews.org/doi/abs/10...>
<https://www.shutterstock.com/blog/col...>
<http://www.researchgate.net/profile/...>
<http://citeseerx.ist.psu.edu/viewdoc/...>
<http://www.orthomolecular.org/library...>
<http://www.researchgate.net/profile/...>
<http://onlinelibrary.wiley.com/doi/10...>
<http://www.sciencedirect.com/science/...>



Selber Austesten!

Test Profile erstellt fuer
LMU, Heidelberg, FU Berlin, TU Dortmund,
Uni Mainz, Kaiserslautern

Anfrage: ben@altmetric.com