

‘Everything Available’ – the strategy for the British Library’s research services

Dr Torsten Reimer
Head of Research Services

Torsten.Reimer@bl.uk / [@torstenreimer](https://twitter.com/torstenreimer)
<http://orcid.org/0000-0001-8357-9422>

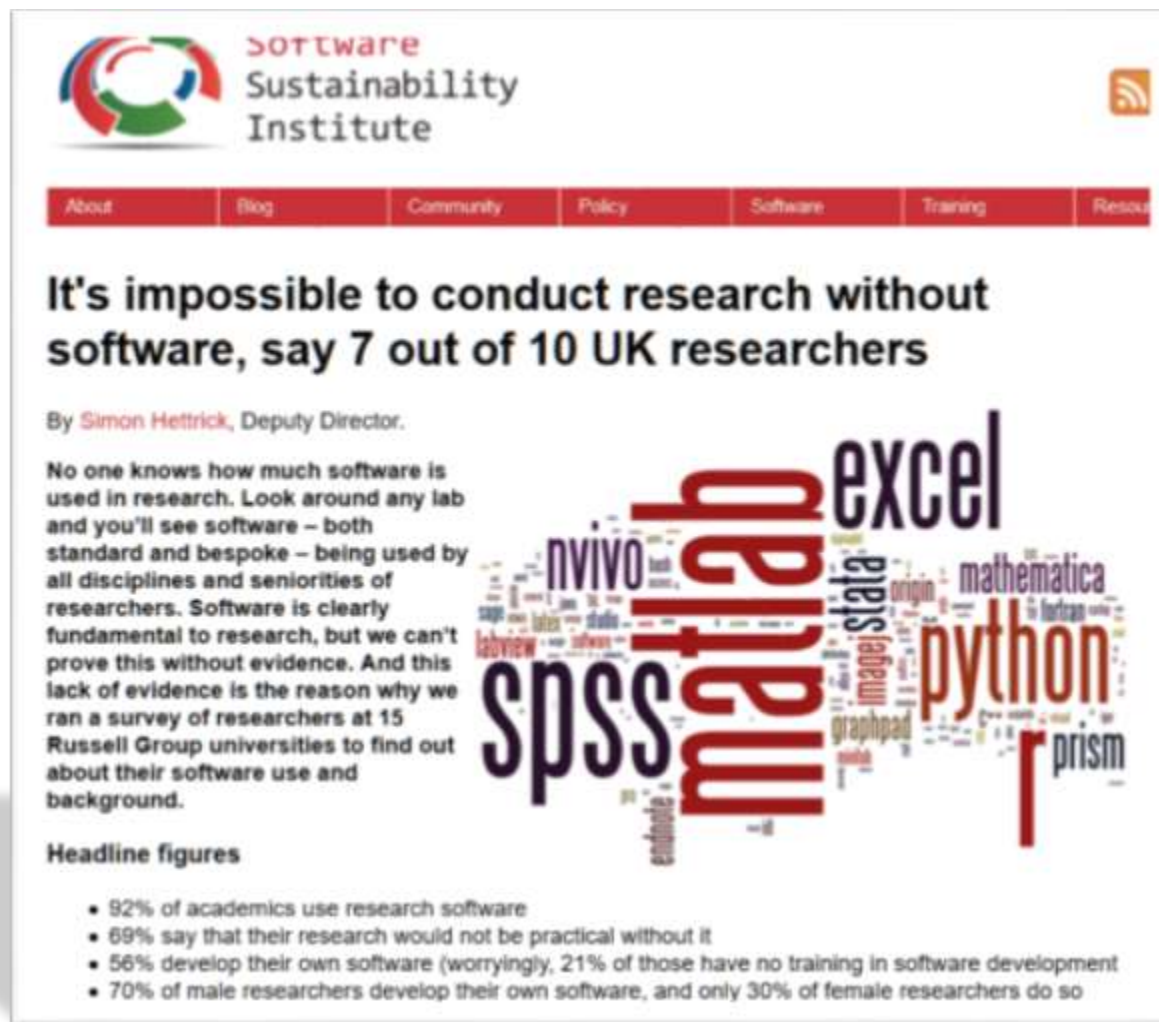


The research library in an 'open' world

- Traditionally, libraries help people to:
 1. Preserve stuff / information
 2. Find stuff / information
 3. Access stuff / information
 4. Use stuff / information to create new stuff / information
- That mission does not change, but the delivery – with fundamental changes in the way libraries operate.
- Significant shift for 2 & 3, with implications for 4.
- Libraries as interoperable parts of the global knowledge infrastructure.



Disruption 1: new ways of working




Software Sustainability Institute

About Blog Community Policy Software Training Resou

It's impossible to conduct research without software, say 7 out of 10 UK researchers

By [Simon Hettrick](#), Deputy Director.

No one knows how much software is used in research. Look around any lab and you'll see software – both standard and bespoke – being used by all disciplines and seniorities of researchers. Software is clearly fundamental to research, but we can't prove this without evidence. And this lack of evidence is the reason why we ran a survey of researchers at 15 Russell Group universities to find out about their software use and background.



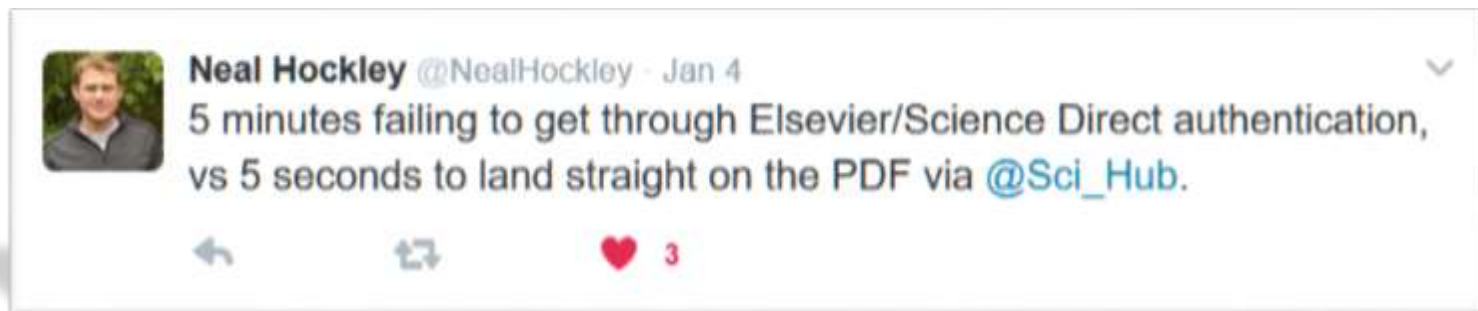
Headline figures

- 92% of academics use research software
- 69% say that their research would not be practical without it
- 56% develop their own software (worryingly, 21% of those have no training in software development)
- 70% of male researchers develop their own software, and only 30% of female researchers do so

Disruption 2: discovery, access, user expectations



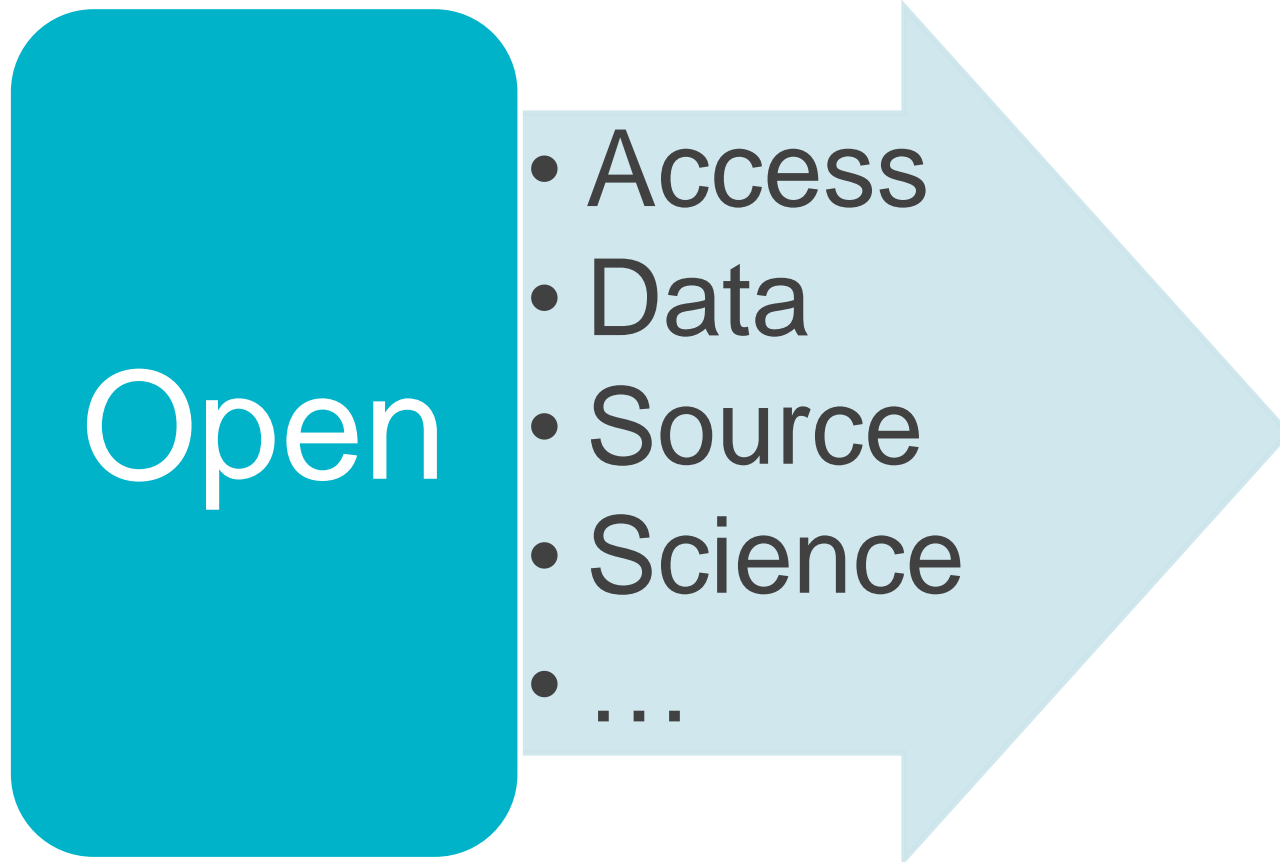
Disruption 2: discovery, access, user expectations



Disruption 3: Budgets, subscriptions, VfM



Disruption 4: open science & scholarly communication



Rethinking the Library in an 'open' world

- Global collections: everything you can make discoverable and accessible
- Procurement: from just-in-case to just-in-time tailored delivery
- Focus shift: from legal deposit and licensed to open content
- Systems approach: new discovery and delivery mechanisms, including data and other research objects
- Bring the content to the users and their favourite tools (even if it means our 'immediate' users are machines – APIs)

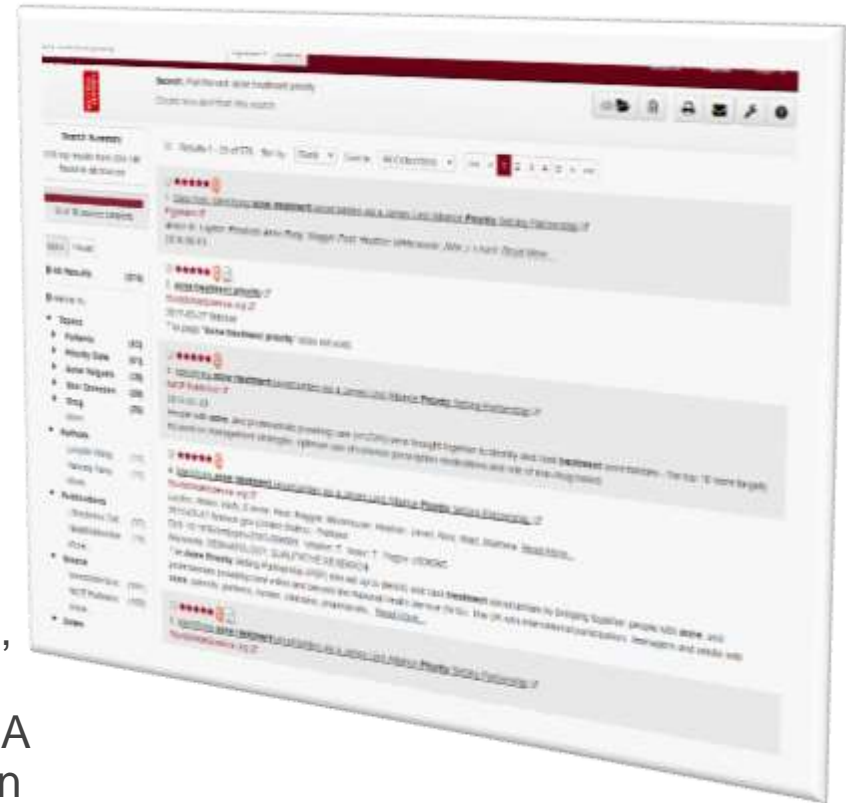
Open Access, two examples

Project Magellan

- Aim: discover and serve users OA content wherever possible
- Means: combine OA Button and other tools and approaches with federated search
- Potential outcome: embed OA content in document supply and discovery systems – potentially as service offer for other libraries

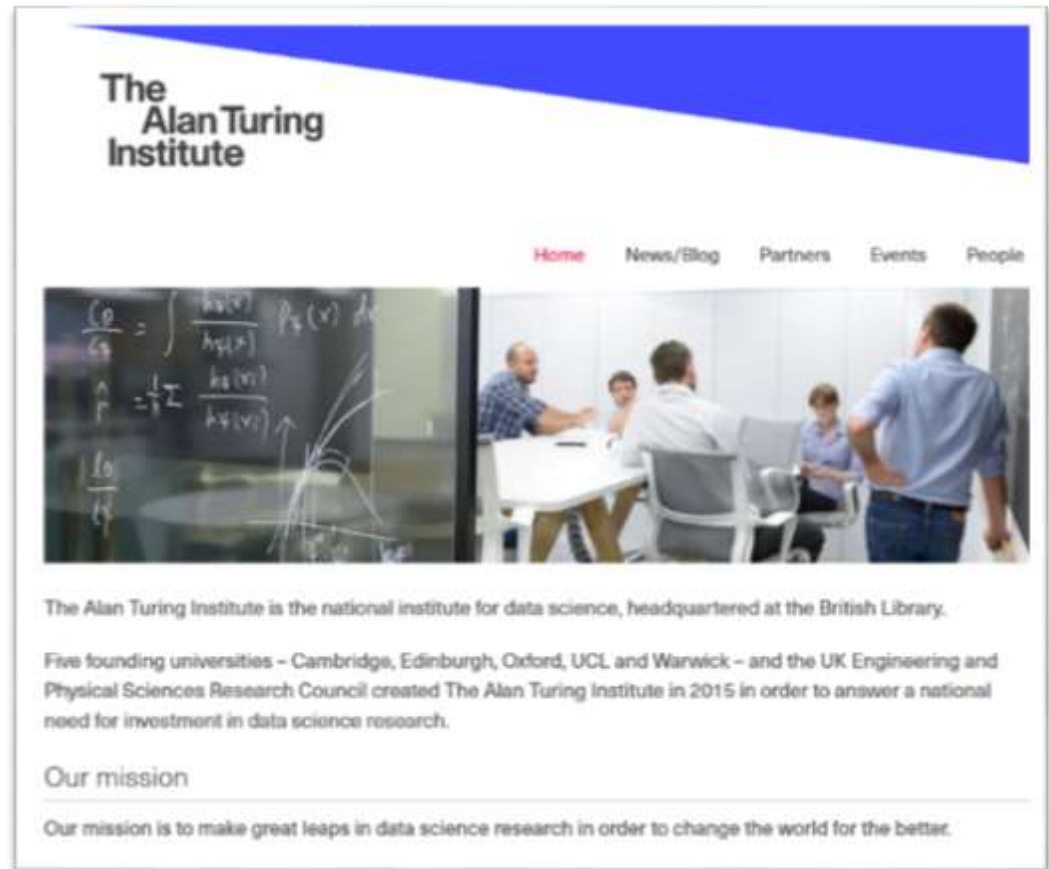
Open access preservation

- Aim: preserve OA outputs, especially ‘green’
- Means: explore whether universities want OA repository content harvested for preservation
- Potential outcome: OA preservation repository, with added features including text analysis




New service delivery models

- Refocusing from in-house development to off-the-shelf solutions, external partnerships and joint-ventures with agile specialists
- Develop a new agenda around data science, machine learning and analytics



The Alan Turing Institute

Home News/Blog Partners Events People



The Alan Turing Institute is the national institute for data science, headquartered at the British Library.

Five founding universities – Cambridge, Edinburgh, Oxford, UCL and Warwick – and the UK Engineering and Physical Sciences Research Council created The Alan Turing Institute in 2015 in order to answer a national need for investment in data science research.

Our mission

Our mission is to make great leaps in data science research in order to change the world for the better.

Infrastructure renewal

- Modernise and replace our whole digital infrastructure, including:
 - Preservation and digital asset management
 - Integrated library system and discovery
 - Access to content, including tailored delivery and API management
- A key driver is to improve services for Library users (B2C), but we will gain scalability to offer services to other organisations (B2B).
- Example: Replacing the Digital Library System

Preservation system (solely BL)	Replacement (shared service)
Single tenant (British Library)	Multi-tenancy enabled
Preservation-focused system	Preservation and access
~1 PB, replicated over four sites	Dramatic increase in scalability

New repository infrastructure

ETHOS

Data.bl.uk

British Library
Institutional
Repository

Partner
Repositories

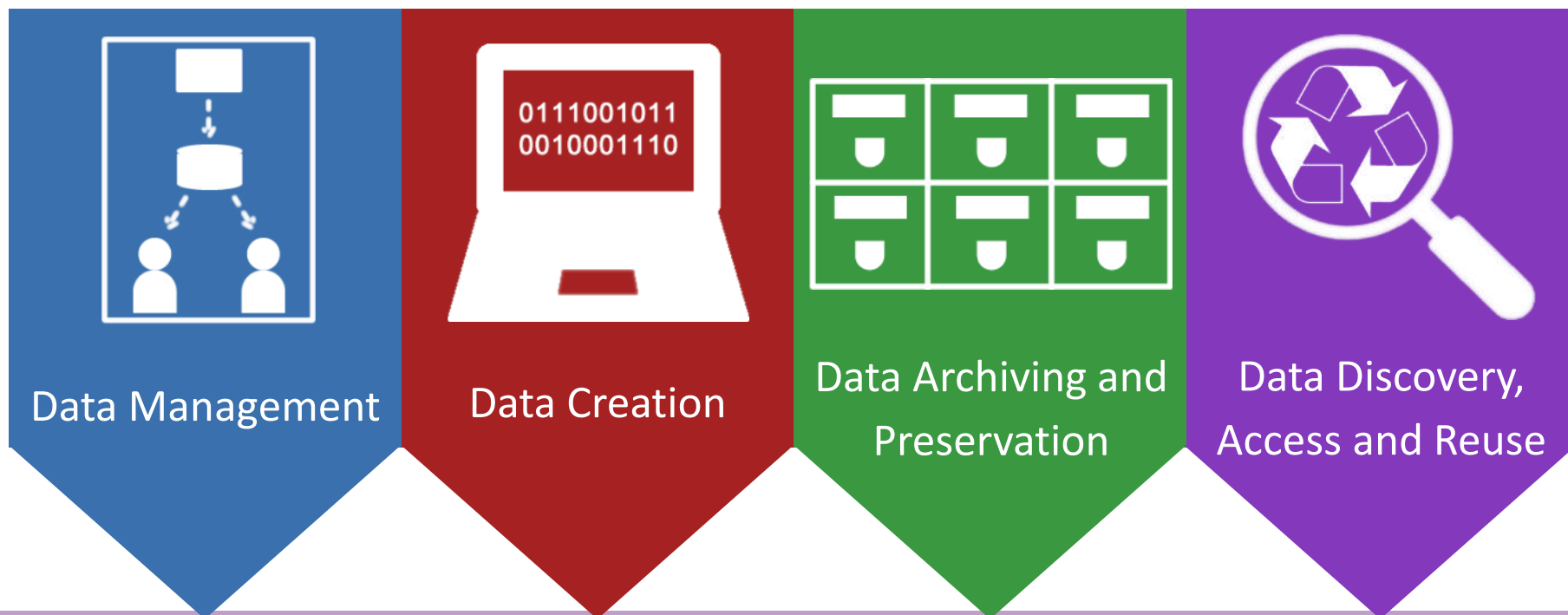
Access Repository System Layer

Services Layer (e.g. digitisation)

British Library Preservation Layer

BL data strategy

‘Our vision for the British Library is that research data are as integrated into our collections, research and services as text is today.’



Improving discovery

short

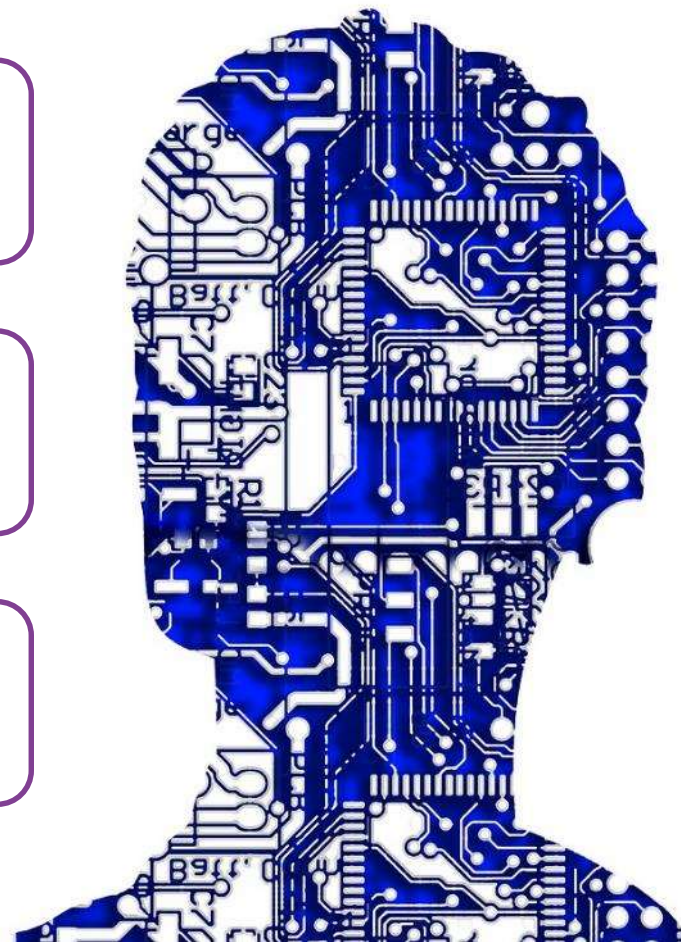
- UX study and UI changes
- Trial new approaches

mid

- Review and possibly replace current discovery

long

- Take a lead in researching & delivering new solutions



(Start of) the Everything Available roadmap

Short-term

Improve discovery solutions

User registration and remote access

Tailored delivery and just-in-time-provision of content

API platform (starting with EThOS)

Improve user experience

Update open access strategy and policy

Lay groundwork to implement the BL data policy

Scope services for proposed Digital Reading Room

Medium-term

Improved whole discovery architecture

Enhanced identifier and digital preservation services

Shared services model and national infrastructure

Make Library collections accessible through external tools/infrastructures

Appropriate on-site support for data-driven research and digital/AV materials

BL as custodian for culturally relevant business data

Long-term

New approaches to discovery, including AI-based systems

Exceptional increase in TDM capacity for heritage content and BL collections

Provide support for digital research lifecycle, working with partners

Conclusion



- Need to be more agile by working with agile players in the market
- No single institution can crack this
- Time for more coordination at national level and beyond
- Collect jointly, preserve nationally, discover internationally
- Invitation to join forces for developing and sustaining global open knowledge infrastructure