

Besser unterwegs mit Karrotten und Süssigkeiten: Warum Zusammenarbeit in Forschungsdatenmanagement sich lohnt



Bibliothekartag 2019 – Leipzig: Forschungsdaten und ihre Communities, 19-3-2019

Sie und Forschungsdaten?



Akteure ins Bereich Forschungsdatenmanagement



Forschungseinrichtungen:

- Universitäten: 14
- Staatlich finanzierte Universitäten: 4
- Universitätskliniken: 8
- Forschungsinstituten: KNAW (15), NWO (9), T2O (6)
- Forschungsinstituten/Abteilungen im Privatsektor: zB: Philips
- Hochschulen: 37



Dachverbände (Strategische Politikgestaltung)

- Association of Universities in the Netherlands (VSNU)
- Netherlands Federation of University Medical Centers (NFU)
- Royal Netherlands Academy of Arts and Sciences (KNAW)
- Netherlands Organisation for Scientific Research (NWO)
- Netherlands Association of Universities of Applied Sciences (VH)
- Netherlands Organisation for applied scientific research (TNO)



Ministerium

- Wirtschaftsministerium
- Ministerium f. Bildung, Kultur & Wissenschaft

Finanzierung Forschung

- ZonMW: Gesundheitsforschung
- NWO: Wissch. Forschung allgemein



ZonMw



Landelijk Coördinatiepunt
Research Data Management

Akteure (II)



Organisationen für Wissenschaftliche Zusammenarbeit (oder Aspekte davon) :



- SURF: ICT for higher education & resesarch
- Netherlands eScience Center
- Research Data Netherlands (DANS, SURFsara, 4TU)
- Dutch Tech Center for Life Sciences (DTL)
- 4TU Research Data (4 Technical Universities)
- HUC – Humanities Cluster (KNAW)
- Network Digital Heritage (libraries, archives, heritage institutes: KB, NA, S&V, CHA (RCE), KNAW, DEN)
- Zusammenarbeit in Forschungsinfrastrukturen (z.B. CLARIAH; ODISSEI)

Netzwerkgruppen



- UKB: Netzwerkgruppe Universitätsbibliotheken und KB/Nationalbiblitohek der Niederlande
- LCRDM: Koördinierungsstelle für Forschungsdatenmangaement
- NPOS: Natonal Plan Open Science



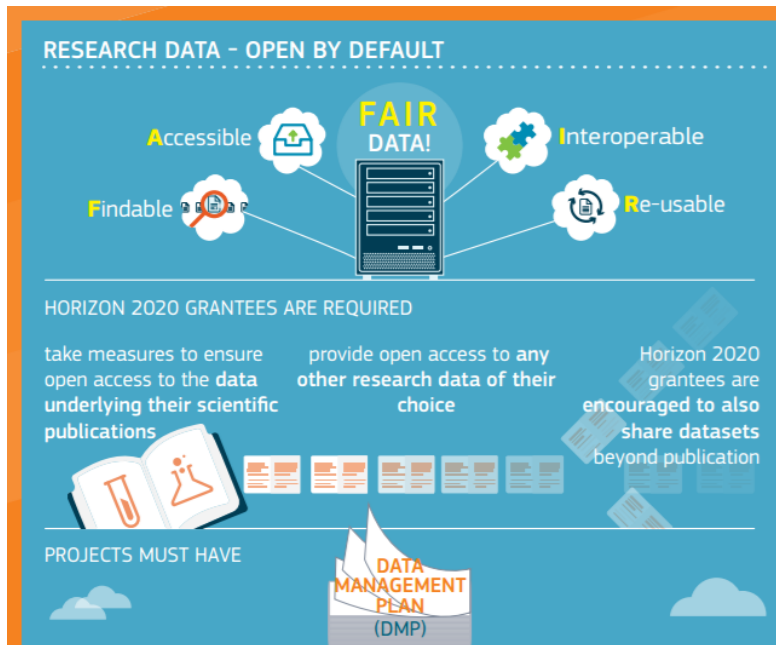
Internationale Entwicklungen/Aktivitäten



USW.

Forschungsförderer & Open Science

(Horizon 2020)



Data management protocol

To make data that emerges from NWO-funded research as accessible and reusable as possible, NWO has decided to implement the data management policy in all NWO funding instruments with effect from **1 October 2016**.

(NWO)

Zeitschriften fördern Veröffentlichung Data

The screenshot shows the top navigation bar of the Nature.com website. On the left, there is a 'MENU' dropdown and the 'nature.com' logo. On the right, there are links for 'Register', 'Subscribe', 'Login', and 'Cart'. Below the navigation bar is a large red banner with the text 'authors & referees' and a search bar. The main content area is titled 'Availability of data, material and methods' and contains two paragraphs of text. The first paragraph states that authors are required to make materials, data, code, and associated protocols promptly available to readers without undue qualifications. The second paragraph explains that after publication, readers who encounter refusal by authors to comply with these policies should contact the chief editor. A 'SUBMIT NOW' button is visible on the right side of the page. A left sidebar contains a 'Site content' menu with links to 'Homepage', 'Policies', 'Publication ethics', 'Bioethics & Biosecurity', 'Availability of data & materials', 'Peer-review policy', 'Embargo', 'Corrections', 'License to publish', 'Feedback', 'Author resources', 'Peer review', and 'Open access'.

[nature.com](#)

[Register](#) [Subscribe](#) [Login](#) [Cart](#)

authors & referees

Search go [Advanced search](#)

[authors & referees](#) > [Policies](#) > Availability of data, material and methods

Site content

- [Homepage](#)
- [Policies](#)
 - [Publication ethics](#)
 - [Bioethics & Biosecurity](#)
 - [Availability of data & materials](#)
 - [Peer-review policy](#)
 - [Embargo](#)
 - [Corrections](#)
 - [License to publish](#)
 - [Feedback](#)
- [Author resources](#)
- [Peer review](#)
- [Open access](#)

Availability of data, material and methods

An inherent principle of publication is that others should be able to replicate and build upon the authors' published claims. A condition of publication in a Nature journal is that **authors are required to make materials, data, code, and associated protocols promptly available to readers without undue qualifications**. Any restrictions on the availability of materials or information must be disclosed to the editors at the time of submission. Any restrictions must **also** be disclosed in the submitted manuscript.

After publication, readers who encounter refusal by the authors to comply with these policies should contact the chief editor of the journal. In cases where editors are unable to resolve a complaint, the journal may refer the matter to the authors' funding institution and/or publish a formal statement of correction, attached online to the publication, stating that readers have been unable to obtain necessary materials to replicate the findings.

See sections below for details on:

- [reporting requirements](#)
- [availability of data](#)
- [availability of materials](#)
- [availability of computer code](#)
- [experimental protocols](#)
- [clinical trials](#)
- [further reading](#)

[SUBMIT NOW](#)

<http://www.nature.com/authors/policies/availability.html>

Also, was meinen Sie?



Neue Anforderungen und unmittelbare Reaktionen

- Das ist nicht meine Priorität
- Leute werden meine Forschungsergebnisse klauen
- Der Person der diesen Daten gemacht hat, arbeitet nicht mehr bei uns
- Meine Daten sind nicht interessant
- Forschungsdatenmanagement bedeutet Zeit- und Geldverschwendung
- Ich brauche 5 Jahren um alle Daten zu finden!



Verwaltung, Research Support, Data Stewards, Dekane, Vorstand

EUGDPR.org The Regulation The Process More Resources Our Partners

The EU General Data Protection Regulation (GDPR) is the most important change in data privacy regulation in 20 years - we're here to make sure you're prepared.

**TIME UNTIL GDPR ENFORCEMENT
UTC**
189:15:31:26
Days Hrs Mins Secs

GDPR Portal: Site Overview Quick Links



Was ging da vor?



Verschiedene Universitäten und Forschungsinstituten in den Niederlande arbeiteten schon an Forschungsdatenmanagement, aber:

- Zersplitterung und Überschneidung Forschungsdaten – aktivitäten und -Ansetze
- Kein Koherenz in Entwicklung von Forschungsdatenmanagementstrategieën, Strategieentwicklung, Förderung und Dienstleistungen
- Das Rad neu erfinden; kein Austausch von Erfahrungen und kein gemeinsame Nutzung gewonnener Erkenntnisse im eigenen Bereich und zwischen den verschiedenen Interessegruppen (innerhalb und ausserhalb das Instituut)
- Keinen Einblick zum derzeitigen Stand des Forschungsdatenmanagement



Warum eine nationale Koördinierungsstelle?



Fördern der effiziente Nutzung der
Forschungsdaten in Wissenschaft und Unterricht

durch

Wissen zu Erzeugen und Wissensweitergabe zu fördern auf alle
Aspekte des Forschungsdatenmanagements

für:

- Die Forschung
- Den Forscher und die Forschungs community
- Das Forschungsinstitut
- Die Finanzierungseinrichtungen



Kein Stock aber Karotten



**National
Coordination Point
Research Data
Management**

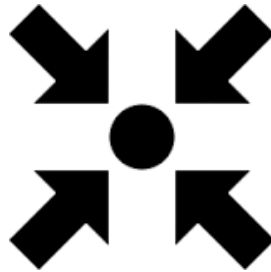


Konzept für nationale Koördinierung

Fördern und Unterstützen von:



Zusammenarbeit



Koördination



Wissensaustausch

Für Forschungsdatenmanagement strategie und praxis auf nationale Ebene

- Mit internationaler Verbindung
- In Abstimmung mit allen Interessenträger
- Benutzen vorhandener Produkten und Dienstleistungen



Das Ziel :

- Eine Genauen Überblick bestehende Initiativen;
- Erfolgreiche Ansetze und Konzepten teilen und Weiterverwendung fördern;
- Fehlende Elemente identifizieren, auf die Tagesordnung setzen und politische Entscheidungen vorbereiten

Damit:

Erleichtern Mitarbeiter Research Support beim Forschungsdatenmanagemnet für die Forschers

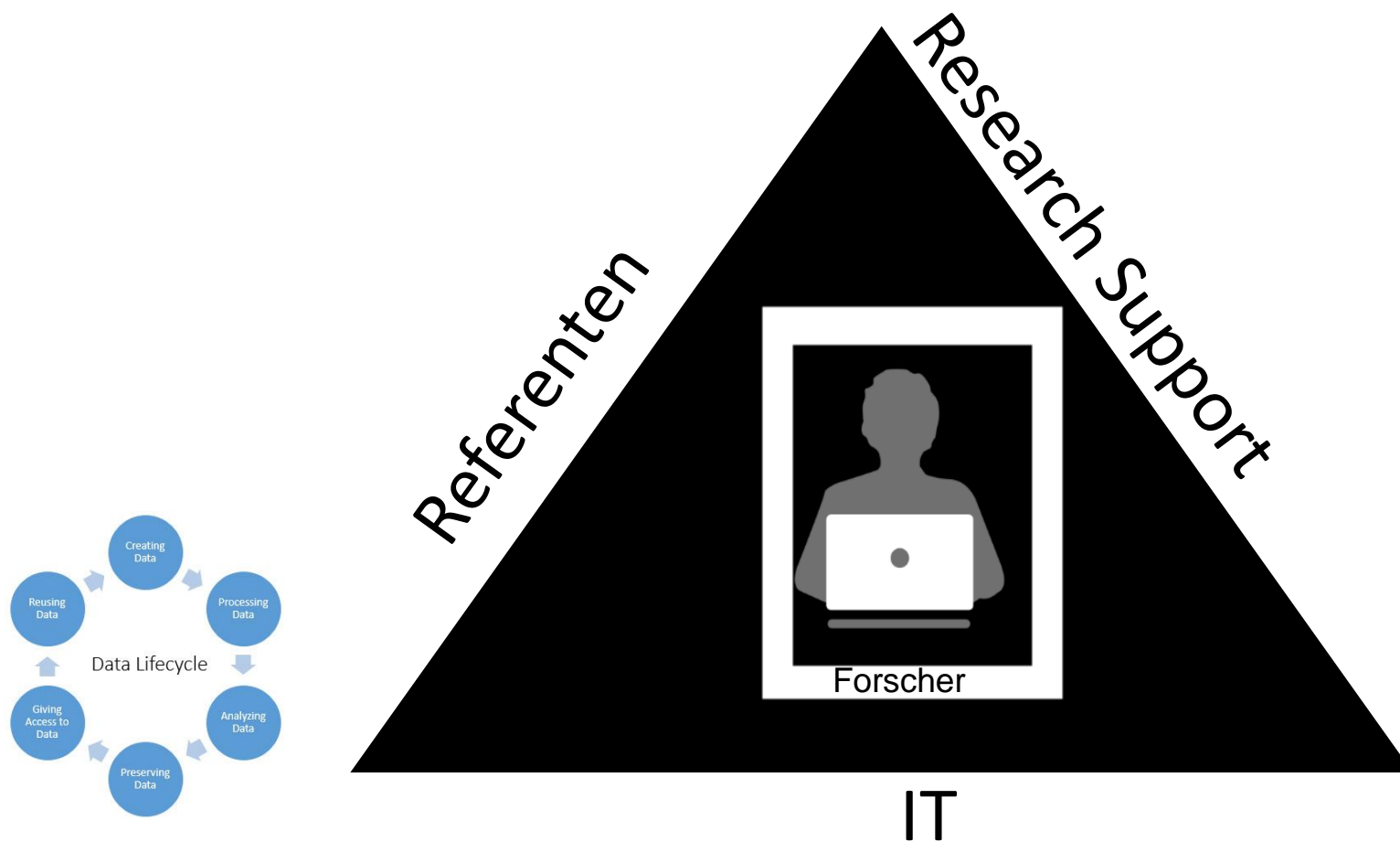
vor,

während und

nach die Forschung



Unverzichtbar beim Forschungsdatenmanagement



Nationale Koördineringsstelle für Forschungsdatenmanagement – Fakten:



- ✓ Seit 2015
- ✓ Projekt
- ✓ Finanzierung: SURF Innovations Program Sustainable Data > Open Science
- ✓ Expertennetz Forschungsdatenmanagement (> 150 Menschen)
- ✓ Verbindung Strategie und Praxis
- ✓ Beseitigung von Themen die zu umfangreich sind für ein Forschungsinstitut
- ✓ Zusammenarbeit zwischen ICT, strategy, support – Bottom-Up-Ansatz
- ✓ Informationsaustausch: www.lcrdm.nl und [wikiplatform](http://wikiplatform.nl). Veranstaltungen für die Experten
- ✓ Endziel: in 2020 ist Forschungsdatenmanagement ganz normal in der Täglichen Praxis in Forschung und Unterricht in NL



2015-2017

Legal Issues & Ownership

Facilities & Data Infrastructur

Financial Aspects of RDM

Research Support & Advise

Engagement



- 80 Interviews für Schnellübersicht n
- [1 Roadmap](#) (2015-2017);
- 40+ [LCRDM](#) Produkte – ready to use oder PoC
- 52 [Sitzungen](#) Arbeitsgruppen
- 20+ [Vorträge](#)
- 20+ Artikel und Interviews [in](#) die Presse
- 5 [nationale](#) Veranstaltungen



Überblick von Themen und Produkten

_TOPICS	PRODUCTS	TOPICS	PRODUCTS
Facilities & Data Infrastructure:			
<ul style="list-style-type: none"> Reference Architecture 	<ul style="list-style-type: none"> Reference Architecture Discussion Model 	Financial Aspects of RDM:	
<ul style="list-style-type: none"> Services & Facilities Catalogue 	<ul style="list-style-type: none"> Services & Facilities Catalogue cf. DoDo (Leiden) 	<ul style="list-style-type: none"> Putting Financial Aspects of RDM at governance level 	<ul style="list-style-type: none"> Position Paper Financial Aspects RDM Round Table Financers & Governance
<ul style="list-style-type: none"> Dictionary 	<ul style="list-style-type: none"> Wiki RDM terminology 	Research Support & Advise:	
Legal Aspects & Ownership:		<ul style="list-style-type: none"> DMP 	<ul style="list-style-type: none"> Inventory DMP templates Document DMP Basic Criteria Inventory DMP support (tips & tricks) Inventory DMP reviewers (via questionnaire) Inventory & Evaluation DMP tools Advise DMP Tooling
<ul style="list-style-type: none"> Privacy (by Design) 	<ul style="list-style-type: none"> Reference Cards: What? Why? How? AVG/GDPR: advise for practical approach AVG/GDPR: internet consultation VSNU GDPR: Maturity Model Publication Designing & Shaping Open Science (conference) Privacy by Design Review VSNU Code of conduct use of personal data in scientific research 	<ul style="list-style-type: none"> FAIR data 	<ul style="list-style-type: none"> Inventory FAIRness Data-repositories in NL (TU Delft) Position Paper FAIR Data
<ul style="list-style-type: none"> Data Protection / IPR 		<ul style="list-style-type: none"> Training 	<ul style="list-style-type: none"> Inventory Training – wiki Overview common elements curricula–wiki Advise on Profiles related Training portfolio's RDM-training MOOC
<ul style="list-style-type: none"> Legal Entry Point 	<ul style="list-style-type: none"> Informed Consent Template Contract Templates Expert Network (Ethical/legal) – wiki 	<ul style="list-style-type: none"> Safe data 	<ul style="list-style-type: none"> Software sustainability – advise Informed Consent Examples Decision Tree Privacy related research & Data sharing
<ul style="list-style-type: none"> Ownership 	<ul style="list-style-type: none"> Position Paper 	Engagement:	
		<ul style="list-style-type: none"> RDM-eisen funders 	<ul style="list-style-type: none"> Overview RDM-requirements funders
		<ul style="list-style-type: none"> Incentives 	<ul style="list-style-type: none"> Position paper Incentives Overview Use-Cases Teaching modules, information material
		<ul style="list-style-type: none"> Use Cases 	<ul style="list-style-type: none"> Inventory & interviews
		<ul style="list-style-type: none"> Shades of Open 	<ul style="list-style-type: none"> Mind Map
		<ul style="list-style-type: none"> Engagement Sessions 	<ul style="list-style-type: none"> As appears

2018 - 2022

SWOT

Strength:

- human network of experts
- Delivered products (bottom up approach)
- engagement-activities (bottom up approach)
- Increasing awareness for RDM in the institutions
- Increasing interest in cooperation in RDM through the LCRDM

Weakness:

- Governing board level support and importance
- Project status
- Unequal spread stakeholder groups in working groups
- Work fatigue working group members (shift to new priorities)
- Cross over connection between working groups
- Connection between delivered products
- Use of the platform

Opportunity: (continue with)

- cooperation &
- Knowledge sharing &
- Develop concrete products for general use
- Broaden network
- Connect with NPOS

Risk (also called: Issues that need attention)

- Organisational embedding
- Maintenance and continuous development products
- Involvement researchers, research communities, governing bodies.

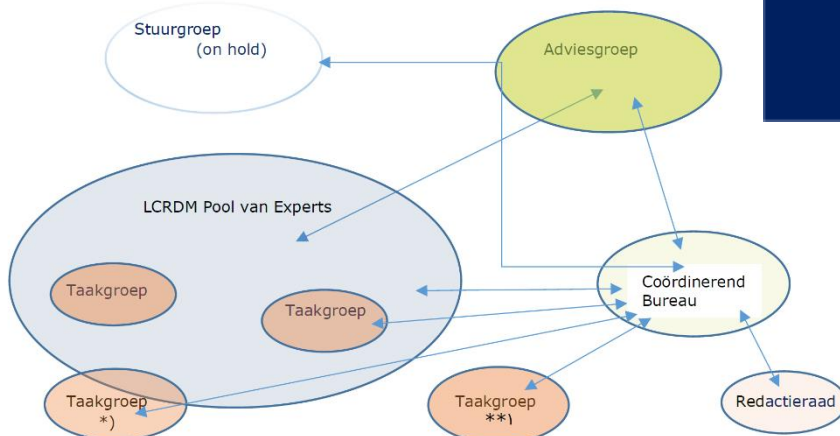


Implementatieplan LCRDM 2018 ev-juni 18.pdf - Adobe Acrobat Pro DC

File Edit View Window Help

Home Tools Implementatieplan ... x

7 / 20 134%



Praxis

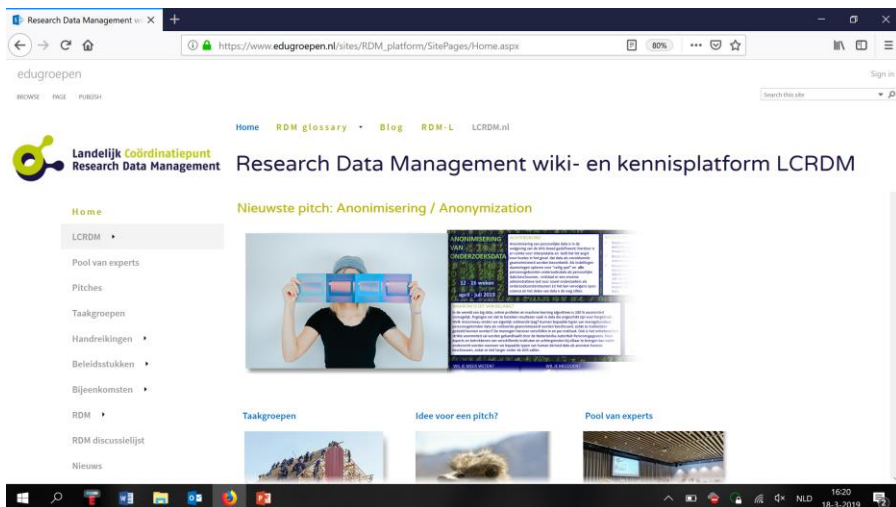
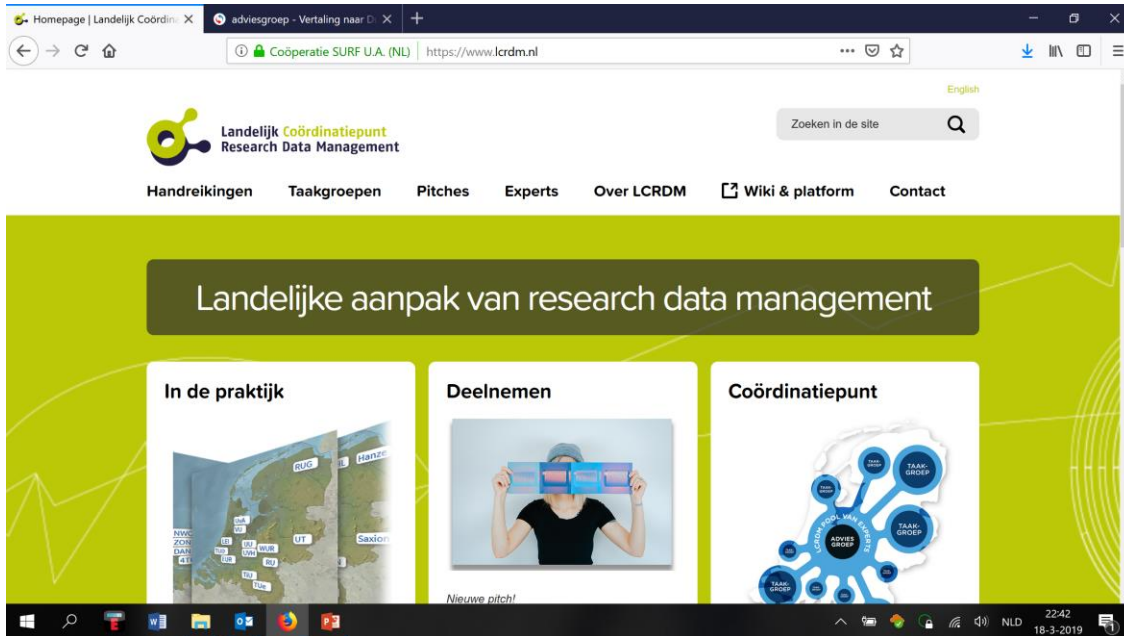
Beratergruppe



- Expertengruppe >150 Menschen



Website & Plattform (wiki)



Kurzfristige Arbeitsgruppen (3 W – 4 Monate)



Data Stewardship



Pseudonymisation



Research Workspace



RDA Project Proposal
& Policy



Digital Curation Network



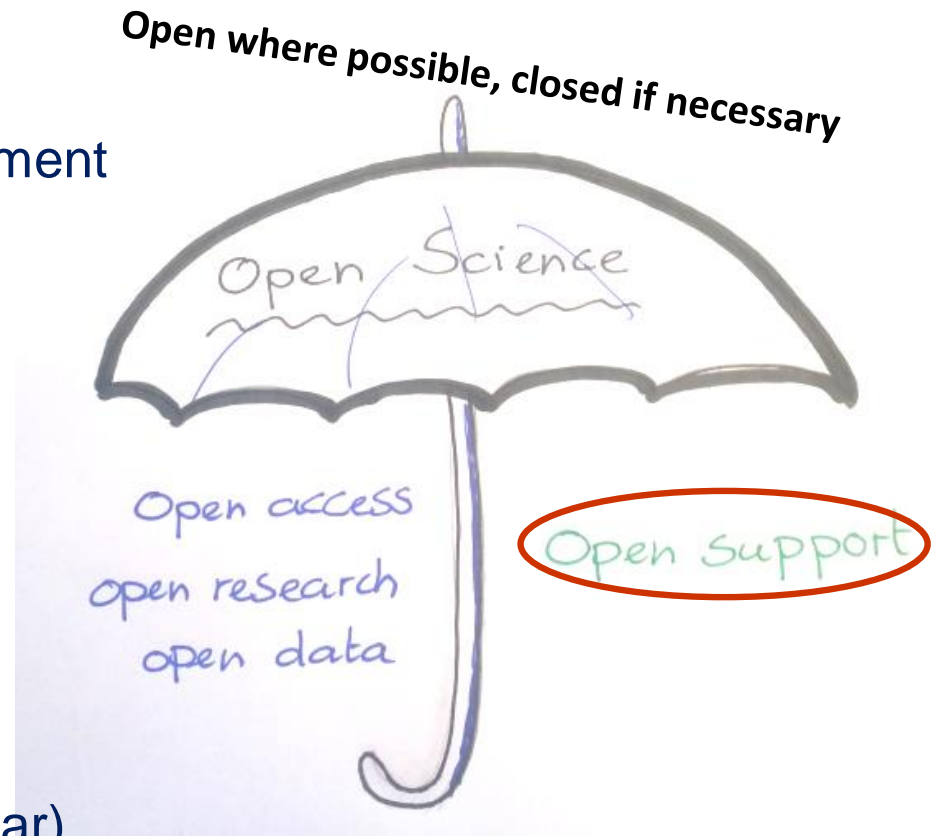
Anonymisation & GDPR

FAIR Daten & Open Science

Gutes Forschungsdatenmanagement
Macht Daten:

F indable
A ccessible
I nteroperable
R eusable

(Auffindbar – Zugänglich –
Interoperabel – Wiederverwendbar)



National Plan Open Science 2017 – 2020

4 Themes (plus: underlying ambitions)

1. 100% Open Access publishing
2. Making research data optimally suitable for Reuse /FAIR
3. Recognition of and rewards for researchers
4. Promoting and supporting open science

- 10 Stakeholders (national organisations for higher education & research):

VSNU, KNAW, NWO, VH, PNN, KB, SURF, NFU, ZonMw, GoFAIR

- 7 Supporting Organisations & Platforms in Science:

DANS, DJA, DTL, NLeSC, 4TU-RD, UKB, LCRDM

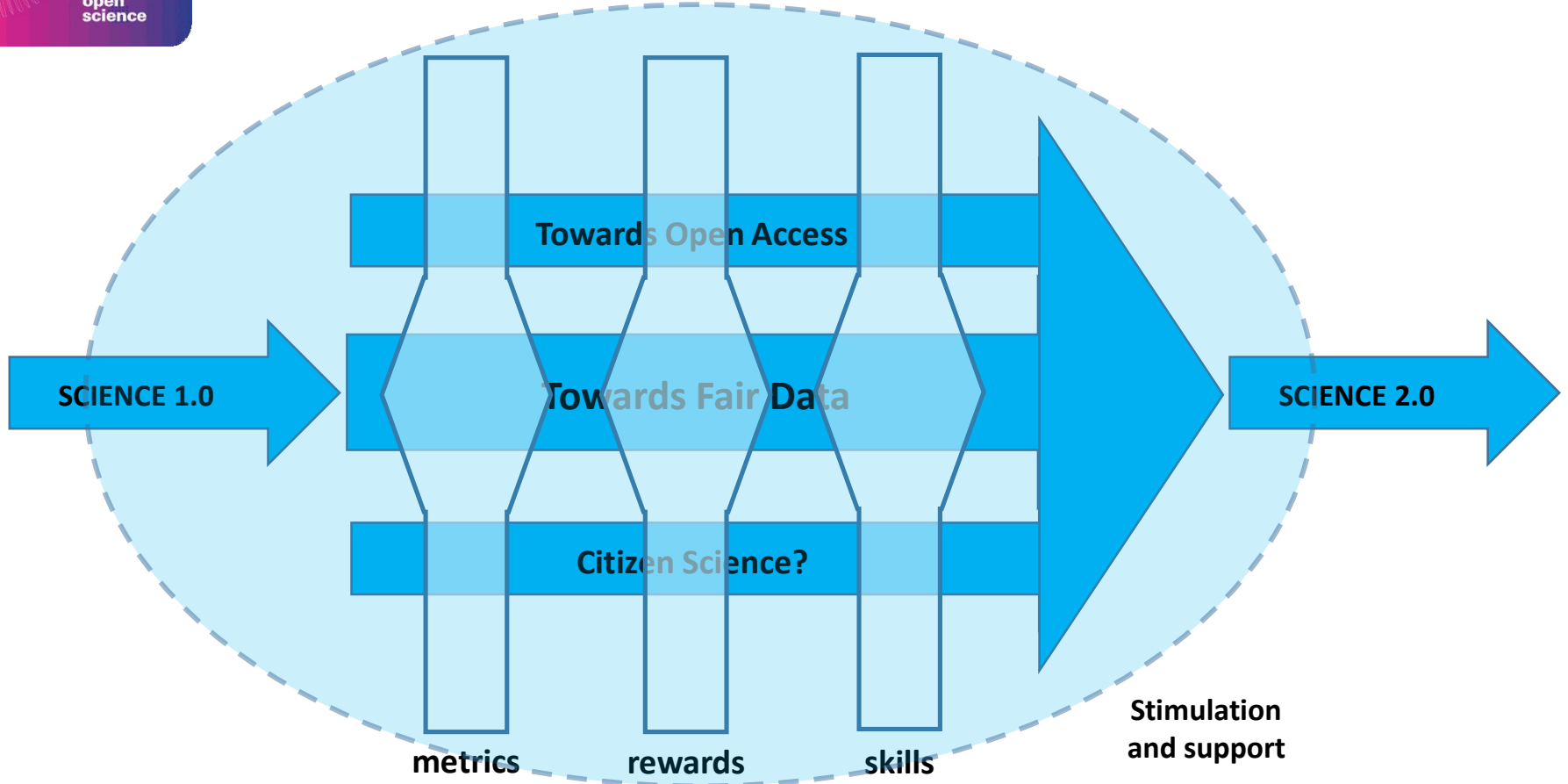
OVER ARCHING GOAL:

TO CONTRIBUTE to the TRANSITION towards an OPEN SCIENCE SYSTEM in the NETHERLANDS





OPEN SCIENCE



Was LCRDM (bottom up) NPOS (top down) brought:

- Providing a network of RDM experts in the field of (scientific) research & education;
- Knowledge sharing & facilitating cooperation on various data related open science aspects (financial, legal, research support, engagement, facilities & data infrastructures)
- Supporting of coordinated policy development & implementation
- Stimulating the debate on financial implications for data related aspects of open science
- Providing an online platform on data related aspects of open science to feed into the national platform for open science.

=> LCRDM

Supports: NPOS Ambitions: 3.2.1; 3.2.2.; 3.2.3; 3.3.1; 3.4.1; 3.4.2; 3.4.3
(Data, Rewarding, Support)

**To enhance RDM
as one of the essential aspects of open science**

Steering Group NPOS

Theme

Theme

Knowledge Questions



Reports and Proposed Policies

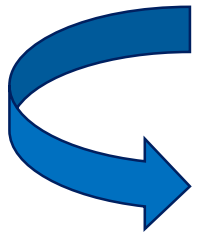
Advisory Group
*Prioritising of questions

Communication

- Web
- Events
- Reports
-

Expert Pool at institutions

Task
Groups



Wie LCRDM wirkt für Open Science



In Verbindung bleiben ...



Ingeborg Verheul
Leiter Koördinerungsstelle
Forschungsdatenmanagement (LCRDM)

E: Ingeborg.verheul@surfsara.nl

W: www.lcrdm.nl

T: [@lcrdm.nl](https://twitter.com/lcrdm.nl)