

SPRINGER NATURE

Librarian Portal

Librarian Portal Team

Sebastian Bock

14 / 06 / 2018

SPRINGER NATURE

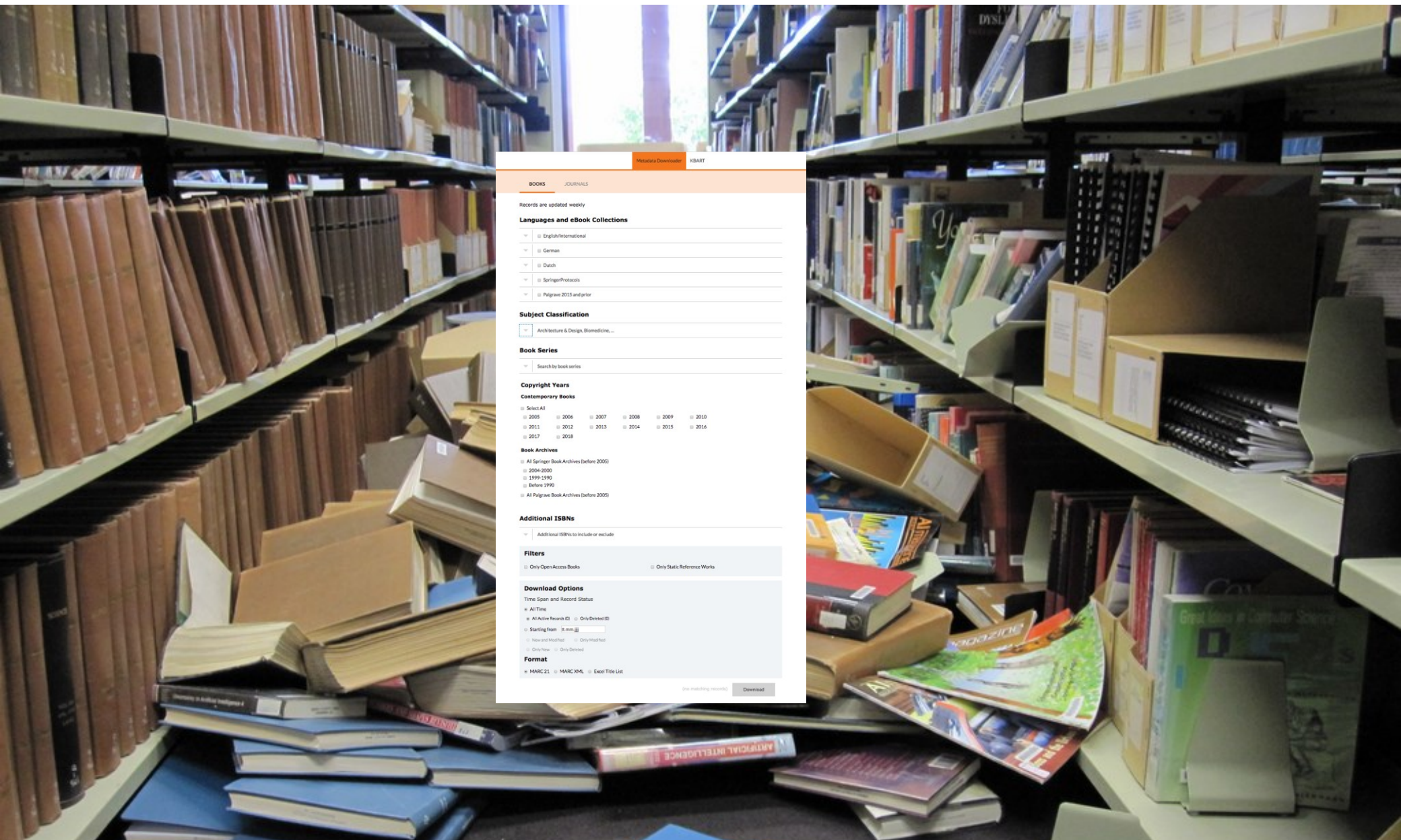
Topics

SPRINGER NATURE | Metadata

SPRINGER NATURE
Librarian Portal

1.0

What is the Metadata Downloader?



Metadata Downloader KBART

BOOKS JOURNALS

Records are updated weekly

Languages and eBook Collections

☐ English/International

☐ German

☐ Dutch

☐ SpringerProtocols

☐ Palgrave 2015 and prior

Subject Classification

☐ Architecture & Design, Biomedicine,...

Book Series

Search by book series

Copyright Years

Contemporary Books

☐ Select All

☐ 2005 ☐ 2006 ☐ 2007 ☐ 2008 ☐ 2009 ☐ 2010

☐ 2011 ☐ 2012 ☐ 2013 ☐ 2014 ☐ 2015 ☐ 2016

☐ 2017 ☐ 2018

Book Archives

☐ All Springer Book Archives (before 2005)

☐ 2004-2000

☐ 1999-1990

☐ Before 1990

☐ All Palgrave Book Archives (before 2005)

Additional ISBNs

Additional ISBNs to include or exclude

Filters

☐ Only Open Access Books ☐ Only Static Reference Works

Download Options

Time Span and Record Status

☒ All Time

☐ All Active Records (2) ☐ Only Deleted (2)

☐ Starting from: 01.01.2010

☐ New and Modified ☐ Only Modified

☐ Only New ☐ Only Deleted

Format

☒ MARC 21 ☐ MARC XML ☐ Excel Title List

(no matching records) Download

Why a new Metadata downloader ?

Languages and Subject Collections

- ▶ ☐ English/International
- ▶ ☐ German
- ▶ ☐ Dutch
- ▶ ☐ SpringerProtocols
- ▶ ☐ Palgrave 2015 and prior
- ▶ Subject Classification
- ▶ Book series

Filters

- ☐ Only Open Access Books
- ☐ Only Static Reference Works



Metadata Downloader

KBART

BOOKS

JOURNALS

Records are updated weekly

Languages

▼ ☒ English, German...

Additional ISSNs

▼ Additional ISSNs to include or exclude

Filters

☐ Only open access journals

Download Options

Time Span and Record Status

- ☒ All Time
- ☒ All Active Records (4038) ☐ Only Deleted (0)
- ☐ Starting from

Usable by everyone on the planet



usability



accessibility

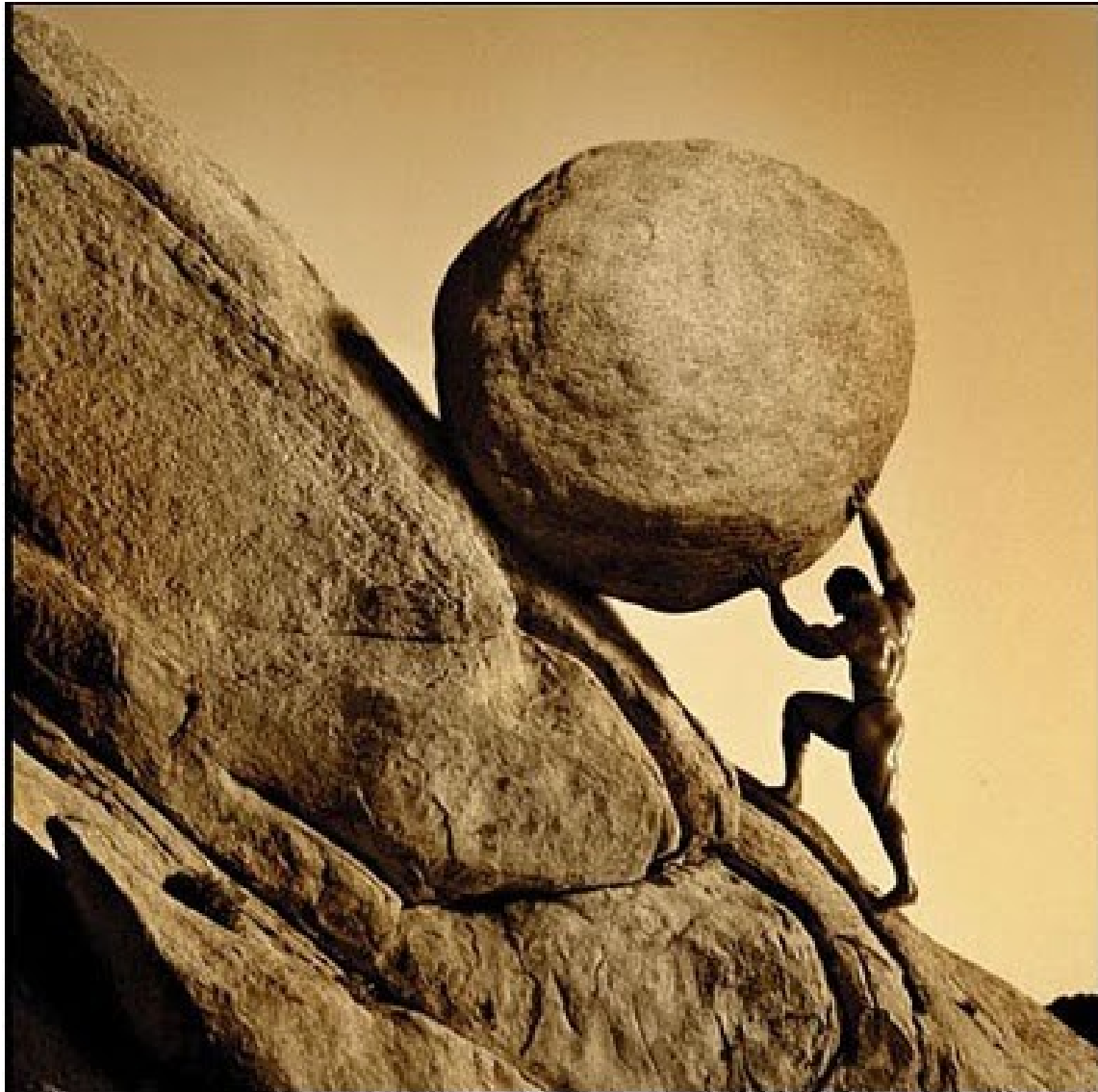


performance

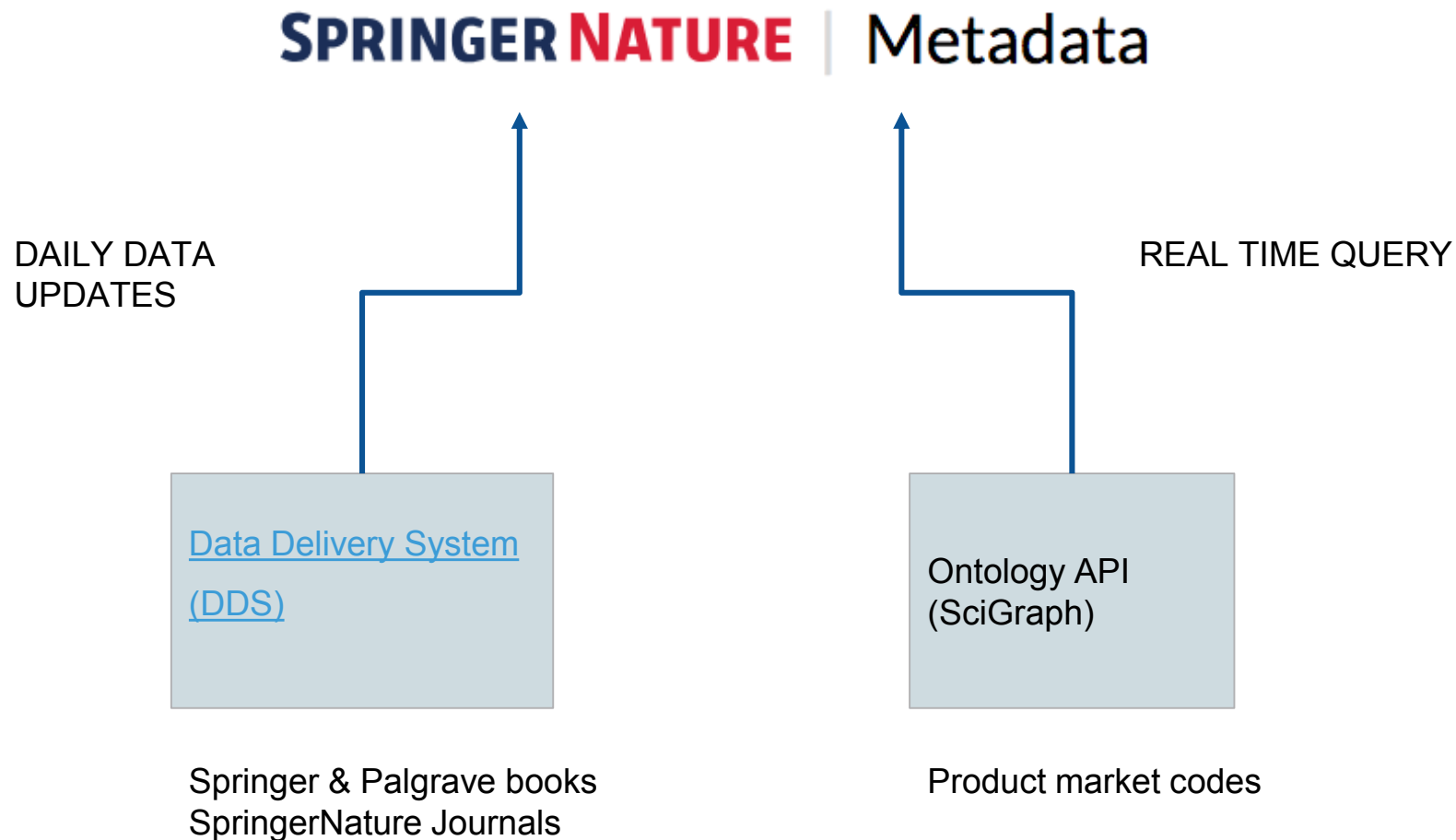


Universal Design

Support repeated tasks



Synchronized and up-to-date data



eBook collections

Book series

ISBNs (up to 10k)

Download options
(Modification date
Format
Grouping option)

Metadata Downloader

KBART

BOOKS

JOURNALS

Records are updated daily

Languages and eBook Collections

English/International

German

Dutch

SpringerProtocols

Palgrave 2015 and prior

Subject Classification

Biomedicine, Economics, Physics, Social Sciences

Book Series

Search by book series

Copyright Years

Contemporary Books

Select All

2019

2018

2017

2016

2015

2014

2013

2012

2011

2010

2009

2008

2007

2006

2005

Book Archives

All Springer Book Archives (before 2005)

2004-2000

1999-1990

Before 1990

All Springer Protocols Archives (before 2005)

All Palgrave Book Archives (before 2005)

ISBNs

ISBNs to include or exclude

Filters

Only Open Access Books

Only Static Reference Works

Download Options

Date modified and Record Status

All Time

All Active Records (0)

Only Deleted (0)

Starting from

lt,mm,jjjj

New and Modified

Only Modified

Only New

Only Deleted

Format

MARC 21

MARC XML

Excel Title List

Grouping

If you have chosen several ebook collections or copyright years we can provide your metadata as separate MARC files.

Split on eBook Collections

Split on Copyright Years

Bookmark your settings

(no matching records)

Download

Subject classification

Select copyright years


Filters

Bookmark option

SPRINGER NATURE



- ☐ English/International
- ☒ Architecture and Design (2004-2008)
- ☒ Behavioral Science (1949-2015)
- ☐ Behavioral Science and Psychology (starting 2016)
- ☒ Biomedical and Life Sciences (starting 1888)
- ☐ Business and Economics (1932-2015)
- ☐ Business and Management (starting 2016)
- ☒ Chemistry and Materials Science (starting 1893)
- ☒ Computer Science without Lecture Notes (starting 1960)
- ☒ Lecture Notes in Computer Science
- ☒ Earth and Environmental Science (starting 1918)
- ☐ Economics and Finance (starting 2016)
- ☐ Education (starting 2016)
- ☒ Energy (starting 2012)
- ☐ Engineering (starting 1923)
- ☒ History (starting 2016)
- ☐ Humanities, Social Sciences and Law (1891-2016)
- ☒ Law and Criminology (starting 2016)
- ☒ Literature, Cultural and Media Studies (starting 2016)
- ☐ Mathematics and Statistics without Lecture Notes (starting 1929)
- ☒ Lecture Notes in Mathematics
- ☒ Medicine (starting 1924)
- ☒ Physics and Astronomy without Lecture Notes (starting 1891)
- ☐ Lecture Notes in Physics
- ☒ Political Science and International Studies (starting 2016)

Bookmark your settings 

(80375 matching records)

Download

<https://adminportal.springernature.com/metadata/books?hash=820335b5f7f9ed371302a0aa39e614380eb7bacb>

Copy Shareable Link

71302a0aa39e614380eb7bacb



Lesezeichen hinzugefügt



Name

My collections 2018|

Ordner

libdash



Mehr...

Entfernen

Fertig

Languages

ISSNs (up to 10k)

Download options
(Modification date
Format
Grouping option)

Subject classification

Filters

Bookmark option

Metadata Downloader KBART

BOOKS JOURNALS

Records are updated daily

Languages

▼ ☐ All languages

Subject Classification

▼ Biomedicine, Economics, Physics, Social Sciences

ISSNs

▼ ISSN to include or exclude

Filters

☐ Only Open Access Journals

Download Options

Date modified and Record Status

☒ All Time

☐ Starting from

☐ New and Modified ☐ Only Modified

☐ Only New

Format

☒ MARC 21 ☐ MARC XML ☐ Excel Title List

Bookmark your settings [↗](#)

(no matching records) Download

Mid term

- More formats (BIBFRAME, JATS, KBART)
- Metadata download for industry collections

Long term (ambition)

- Metadata updates per email / FTP delivery / API
- Download metadata of your holdings with one click
- Include metrics

SPRINGER **NATURE**

Librarian Portal

2.0

Team 2018





INITIAL UNDERSTANDING OF LIBRARIANS





LIBRARIANS HAVE VERY COMPLEX JOBS



SUPPORT LIBRARIANS TO DO THEIR JOB

Choose organisation

Consortia

Institution

CONTENT

ACCESS

USAGE

INSTITUTIONAL
LICENCES

..NATURE

..SPRINGER

..Nature content
you have access
to (CSV)

..Nature
Complete

..Springer
content you
have access to
(KBART)

..Automated
holdings

..IP range access
management

..Token based
access
management

..Associated
users

..Nature and
some Palgrave
(MPS)

..SUSHI

..Springer
COUNTER
reports

..SUSHI

..On demand
licenses

..NATURE

..SPRINGER

..Article on
demand

..(Content on
demand)

..Springer
Deposit model

..SpringerLink
Settings

..Article on
demand

..(Content on
demand)

..Springer
Deposit model

..SpringerLink
Settings

..Article on
demand

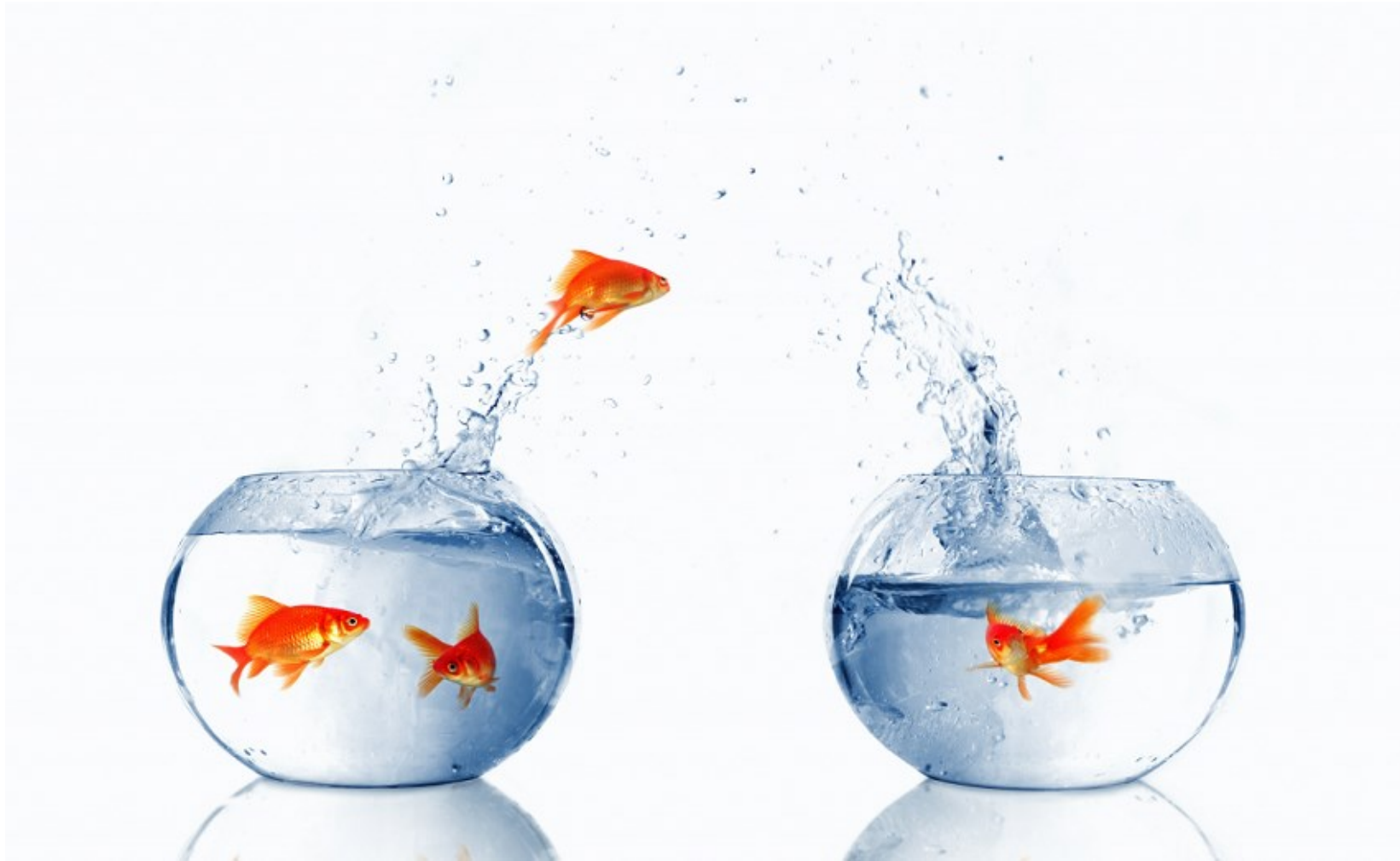
..(Content on
demand)

..Springer
Deposit model
(?)

Part of a big migration programme



Data migration and mapping



90% - 95% migrated correctly (increasing from day to day)

Customer confirmation

• Institution One (Business Partner ID 123456)
• Institution Two (Business Partner ID 891234)

Ask me later!

Your institutions

Let's make sure you are correctly set up.

Are these the institutions you should have access to administer?

- Institution One (Business Partner ID 123456)
- Institution Two (Business Partner ID 891234)

Yes, this is correct

Call customer service about a problem



SPRINGER NATURE | Admin

Help & Support

Requester *

Subject *

B I U | **Text** | **Link** | **Image** | **Code**

Customer / Business Partner #

Nature Site ID

Institution URL

Brand

☐ I'm not a robot

reCAPTCHA Privacy - Terms

Send Feedback

Institution One

[Change institution](#)

Access via IP

Access to the Springer Nature content can be restricted to specific IP address ranges. To make changes to the IP address ranges, contact customer service.

From

120.151.152.243

Token and MagicWord

Share the address to your login page and your licensed material on your institution's login page.

Your institution's login page

<http://www.nature.com/nams/svc/tlogin/E0F74689160646C5415AD03E743CB4>

MagicWord

SimSalaBim

To change MagicWord, [contact customer service](#).

Institutions

[Change institution](#)

| Content

| Access

| Usage

Hi Betty Jupiter,

You administer:

- "TEST" Solar Consortium (Business Partner ID 3001390643)
- Springer Affiliates (Business Partner ID 3000093925)
- Massachusetts Institute of Technology Libraries (Business Partner ID 8200711420)
- "TEST" Jupiter University (Business Partner ID 3001390640)

Your email address

casper.identity+jupiter@gmail.com

Change your email address by [contacting customer service](#).

Your password

Change your password on your [Springer Link account page](#).

Logout

CONTENT

SPRINGER NATURE | Administration

Betty Jupiter Help & Contact

"TEST" Jupiter University

[Change institution](#)

| Content | Access | Usage

Your Nature journals

Get an overview of all Nature titles your institution has access to.

File format: A comma separated text file. Each row represents an active license for one title. If you have access to several ranges of journal issues, each range will have its own row. Expired licenses are not included, neither is content from trial or gratis licenses.

[Nature journals info \(.csv\)](#)

For more info about your active and past licenses, [contact customer service](#).

Your journals and books from Springer and other imprints

Get an overview of all content on Springer Link that your institution has access to.

[Title lists in Springer Admin](#)

Public metadata

We supply metadata for all our content in various formats. Some ways of accessing them are:

- [The Metadata Downloader](#) for MARC and Excel lists of all our journals and ebooks.
- [OCLC-MARC records](#) can be obtained from OCLC.
- [More ways to access MARC records](#) such as via FTP, specific lists for forthcoming titles, etc.
- [KBART lists](#) of all ebooks and journals.
- [Springer | BioMed Central API Portal](#) for getting metadata for all journals and ebooks and full text of open access content.

For info on using MARC records, see [MARC records for librarians](#).

How we work with discovery services, link resolvers and abstracting and indexing services

We automatically provide metadata and full text content to discovery services (Ex Libris Primo, ProQuest Summon, EBSCO Discovery Service, and OCLC WorldCat Discovery), link resolvers (EBSCO FullTextFinder, ExLibris SFX, Serials Solutions 360 Knowledge Base, OCLC WorldCat Local) and many abstracting and indexing services.

[Tools and services we provide metadata and content to](#)

Help & Contact Public Metadata Downloader Public KBART Lists Impressum

SPRINGER NATURE

Change institutions

Your Nature licences

Your Springer (book and journal) titles

Public Metadata

Collaboration with discovery services

ACCESS

Your IP ranges

"TEST" Jupiter University

[Change institution](#)

| Content

| Access

| Usage

Access via IP addresses

Access to the Springer Nature content licensed by your institution is granted on the basis of IP address ranges.

Computers and other devices that have an IP address from the ranges below have such access.

To make changes to the IP ranges, [contact customer service](#).

From	To
1.5.6.7	1.5.6.7
213.84.240.227	213.84.240.227

Token and MagicWord access

Access to Nature and Scientific American material can be granted to patrons via "Token and MagicWord". Currently this is not set up for your institution. If this is a mistake, [contact customer service](#).

We are developing a new way for you to provide patrons with access to your content. The new system will replace Token and MagicWord access. Therefore we do not provide new contracts for this access method. Your licensing manager will know more.

Associated Users

Associated users

Springer Nature accounts for individual persons can be associated with your organization. Logged in associated users have access to the material you have licensed.

To see, add and remove associated users:

1. Go to [My organization in Springer Admin](#)
2. Tap on Users

SpringerLink Co-Branding

Nature Article on Demand (AOD)

AOD is a "pay per use" model for Nature content. AOD can enable access to all Nature titles or be limited to selected titles. Access to AOD content always requires that the device has an IP address from your ranges. In addition, you can require that your patrons supply a password.

If you use AOD and want to see or change your password or list of accessible titles, contact customer service.

Token and Magic word

Articles on demand

Demo / Update SNAP

Co-branding

On Springer Link article pages your institution will be attributed with enabling access to the full text.

USAGE

COUNTER reports

Nature Article on Demand usage reports

Springer deposit reports

Demo / Update SNAP

SPRINGER NATURE | Administration

Betty Jupiter

Help & Contact

"TEST" Jupiter University

[Change institution](#)

| Content | Access | Usage

Usage data

Our [COUNTER compliant](#) usage data can help you understand how journals, ebooks and databases are used by your patrons.

Download COUNTER data

- Springer content, Adis content, most Palgrave content, Nano and Materials databases, et cetera
[Download from Springer Admin.](#)
- Nature content
[Download from MPS Insights](#)
- Palgrave Macmillan content
[Download from MPS Insights](#)
- BMC & SpringerOpen content
[Contact customer service](#)

Automated COUNTER data downloads

Our usage data can be accessed via the [SUSHI protocol](#). This lets COUNTER analysis systems automatically fetch data from us, instead of requiring you to download reports manually.

- Springer, BMC, SpringerOpen, most Palgrave content, et cetera
[Instructions on how to use our SUSHI service on GitHub](#)
- Nature and some Palgrave content
[Contact customer service](#)

Nature Article on Demand (AOD)

AOD is a "pay per use" model for Nature content.

If you use AOD and want to see how many AOD units remain or get reports of how units have been used, [contact customer service](#).

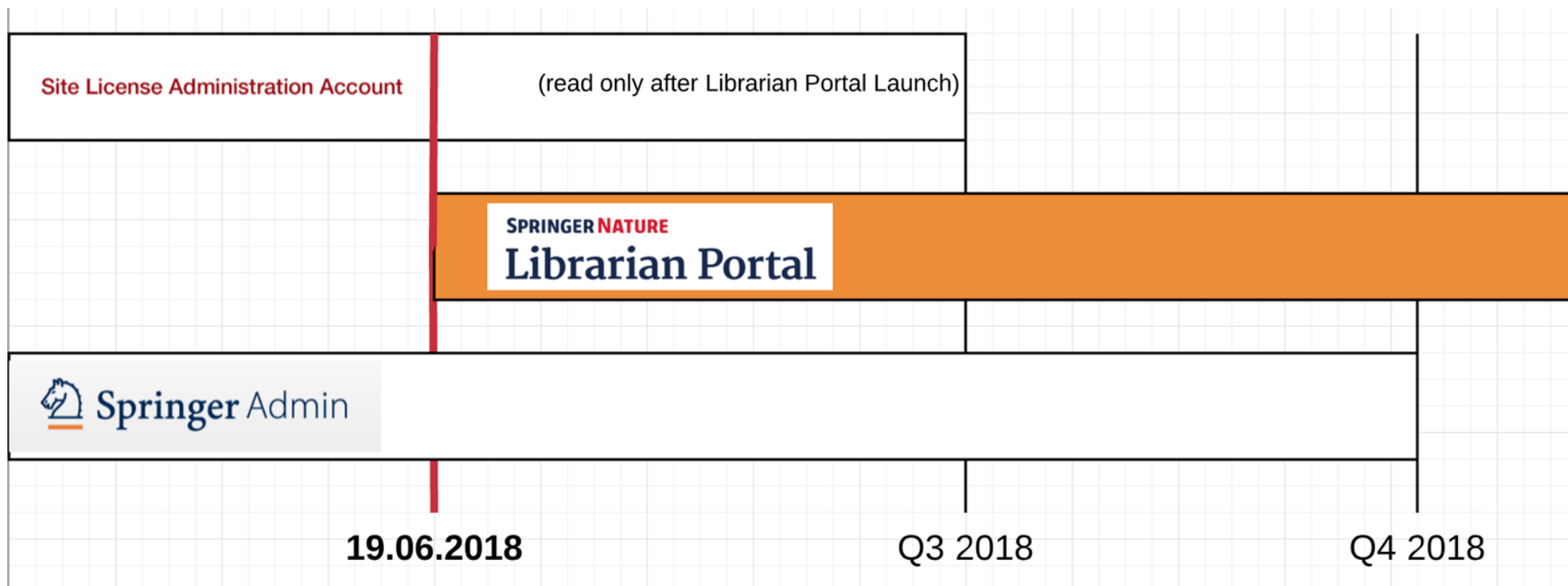
Springer Deposit

Springer Deposit is a "pay per use" model for Springer Link content.

If you use Springer Deposit and want to see your balance:

- Go to Usage in [Springer Admin](#)
- Tap on Deposit contract balances

Post-Launch situation



Librarian Portal

What's up next?

Mid term

- Migrate Springer features to the Librarian Portal
- Enable self service

Long term (ambition)

- COUNTER 5 reports
- Automation & alerting
- More reports with better data (COUNTER+)
- Intelligent troubleshooting

WE NEED YOUR SUPPORT!
(to build something that supports you)

sebastian.bock@springernature.com

Questions / feedback

3.0

Thank you!

Sebastian Bock

sebastian.bock@springernature.com