

RDA Toolkit

RDA Toolkit

- **Online-Ausgabe des Regelwerks**
- **Übersetzungen von RDA**
werden in RDA Toolkit integriert, so dass dieses zu einem multilingualen Tool weiterentwickelt wird
- **enthält zusätzliche Materialien**
z.B. AACR2 und LoC Policy Statements
- **enthält verschiedene Werkzeuge**
z.B. zum Erstellen von „Workflows“ und Konkordanzen
- **erhebliche Defizite in der Umsetzung**
sehr langsam, umständliche Navigation (wird verbessert)
- **relativ teuer (jährliche Lizenzkosten)**
evtl. billiger für Konsortien/Verbände

Preisgestaltung

	USD	CAD	GBP	AUD	EUR	SGD
Solo-user annual subscription —password access; one profile, one user	\$195	\$215	£140	\$245	€170	\$315
Site annual subscription for one user at a time, unlimited number of total users and profiles	\$325	\$355	£235	\$410	€285	\$520
Site subscription, additional concurrent users						
Annual fee for 2 or more concurrent users. Price shown is per additional user.						
2-9 concurrent users	\$55	\$60	£40	\$70	€50	\$85
10-19 concurrent users	\$50	\$55	£38	\$65	€45	\$75
20+ concurrent users	\$45	\$50	£35	\$60	€40	\$70
Example: 5 registered users, with 3 concurrent - user license = \$435USD (\$325 base price + 2 x \$55)						

nach dem Log-in

RDA **TOOLS** **RESOURCES**

RDA Quick Search



- RDA

- RDA Table of Contents
- + 0: Introduction
- Section 1: Recording Attributes of Manifestation & Item
 - + 1: General Guidelines on Recording Attributes of Manifestations and Items
 - + 2: Identifying Manifestations and Items
 - + 3: Describing Carriers
 - + 4: Providing Acquisition and Access Information
- Section 2: Recording Attributes of Work & Expression
 - + 5: General Guidelines on Recording Attributes of Works and Expressions
 - + 6: Identifying Works and Expressions
 - + 7: Describing Content
- Section 3: Recording Attributes of Person, Family, & Corporate Body
 - + 8: General Guidelines on Recording Attributes of Persons, Families, and Corporate Bodies
 - + 9: Identifying Persons
 - + 10: Identifying Families
 - + 11: Identifying Corporate Bodies
- Section 4: Recording Attributes of Concept, Object, Event & Place
 - 12: General Guidelines on

[About](#) | [Help](#) | [Feedback](#)

GET STARTED WITH THE RDA TOOLKIT!

It's as easy as . . .

Log in to Your Subscription

If your institution's name is visible in the upper right corner of the window, then you're already logged into your subscription. If not, enter your subscription Account ID and Password in the login boxes.

Create a User Profile

Next, create a User Profile by clicking the "Create" button. If you already have a User Profile, enter your Profile Name and Password in the login boxes. Solo-users are automatically logged into their User Profile when they log into their subscription.

Browse or Search

On the RDA tab to the left, click the plus sign to expand and browse the RDA table of contents. On the Tools tab you can browse the RDA Element Set as well as workflows and maps. Search RDA only from the "RDA Quick Search" box above, or use Advanced Search to search RDA and other documents.

Need Assistance?

- Click the "Help" link in the lower left corner to visit our Quick Start Guide
- [Request Support](#)
- For an overview of RDA: Resource Description and Access and the RDA Toolkit—including how to create a User Profile, to browse and search, to use workflows and mappings, and to leverage your existing knowledge of AACR2 and MARC as an entry into RDA cataloging

Aufblättern des Navigationsbaums

RDA TOOLS RESOURCES

RDA Quick Search



- RDA
 - RDA Table of Contents
 - + 0: Introduction
 - Section 1: Recording Attributes of Manifestation & Item
 - + 1: General Guidelines on Recording Attributes of Manifestations and Items
 - + 2: Identifying Manifestations and Items
 - + 3: Describing Carriers
 - + 4: Providing Acquisition and Access Information
 - Section 2: Recording Attributes of Work & Expression
 - + 5: General Guidelines on Recording Attributes of Works and Expressions
 - + 6: Identifying Works and Expressions
 - + 7: Describing Content
 - Section 3: Recording Attributes of Person, Family, & Corporate Body
 - + 8: General Guidelines on Recording Attributes of Persons, Families, and Corporate Bodies
 - + 9: Identifying Persons
 - 9.0 Purpose and Scope
 - + 9.1 General Guidelines on Identifying Persons
 - + 9.2 Name of the Person
 - + 9.3 Date Associated with the

GET STARTED WITH THE RDA TOOLKIT!

It's as easy as . . .

Log in to Your Subscription

If your institution's name is visible in the upper right corner of the window, then you're already logged into your subscription. If not, enter your subscription Account ID and Password in the login boxes.

Create a User Profile

Next, create a User Profile by clicking the "Create" button. If you already have a User Profile, enter your Profile Name and Password in the login boxes. Solo-users are automatically logged into their User Profile when they log into their subscription.

Browse or Search

On the RDA tab to the left, click the plus sign to expand and browse the RDA table of contents. On the Tools tab you can browse the RDA Element Set as well as workflows and maps. Search RDA only from the "RDA Quick Search" box above, or use Advanced Search to search RDA and other documents.

Need Assistance?

- Click the "Help" link in the lower left corner to visit our Quick Start Guide
- Request Support
- For an overview of RDA: Resource Description and Access and the RDA Toolkit—including how to create a User Profile, to browse and search, to use workflows and mappings, and to leverage your existing knowledge of AACR2 and MARC as an entry into RDA cataloging

About | Help | Feedback

javascript:loadContent('document.php?id=rdachp9')

RDA TOOLS RESOURCES

- 2: Identifying Manifestations and Items
- + 3: Describing Carriers
- + 4: Providing Acquisition and Access Information
- Section 2: Recording Attributes of Work & Expression
 - + 5: General Guidelines on Recording Attributes of Works and Expressions
 - + 6: Identifying Works and Expressions
 - + 7: Describing Content
- Section 3: Recording Attributes of Person, Family, & Corporate Body
 - + 8: General Guidelines on Recording Attributes of Persons, Families, and Corporate Bodies
 - 9: Identifying Persons
 - 9.0 Purpose and Scope
 - + 9.1 General Guidelines on Identifying Persons
 - 9.2 Name of the Person
 - + 9.2.1 Basic Instructions on Recording Names of Persons
 - + 9.2.2 Preferred Name for the Person
 - + 9.2.3 Variant Name for the Person
 - + 9.3 Date Associated with the Person
 - + 9.4 Title of the Person
 - + 9.5 Fuller Form of Name

[About](#) | [Help](#) | [Feedback](#)

RDA Quick Search



GET STARTED WITH THE RDA TOOLKIT!

It's as easy as . . .

Log in to Your Subscription

If your institution's name is visible in the upper right corner of the window, then you're already logged into your subscription. If not, enter your subscription Account ID and Password in the login boxes.

Create a User Profile

Next, create a User Profile by clicking the "Create" button. If you already have a User Profile, enter your Profile Name and Password in the login boxes. Solo-users are automatically logged into their User Profile when they log into their subscription.

Browse or Search

On the RDA tab to the left, click the plus sign to expand and browse the RDA table of contents. On the Tools tab you can browse the RDA Element Set as well as workflows and maps. Search RDA only from the "RDA Quick Search" box above, or use Advanced Search to search RDA and other documents.

Need Assistance?

- Click the "Help" link in the lower left corner to visit our Quick Start Guide
- [Request Support](#)
- For an overview of RDA: Resource Description and Access and the RDA Toolkit—including how to create a User Profile, to browse and search, to use workflows and mappings, and to leverage your existing knowledge of AACR2 and MARC as an entry into RDA cataloging

RDA TOOLS RESOURCES

RDA Quick Search    

- + 7: Describing Content
- Section 3: Recording Attributes of Person, Family, & Corporate Body
- + 8: General Guidelines on Recording Attributes of Persons, Families, and Corporate Bodies
- 9: Identifying Persons
 - 9.0 Purpose and Scope
 - + 9.1 General Guidelines on Identifying Persons
 - 9.2 Name of the Person
 - + 9.2.1 Basic Instructions on Recording Names of Persons
 - 9.2.2 Preferred Name for the Person**
 - 9.2.2.1 Scope
 - 9.2.2.2 Sources of Information
 - 9.2.2.3 Choosing the Preferred Name
 - 9.2.2.4 Recording the Preferred Name
 - + 9.2.2.5 Different Forms of the Same Name
 - 9.2.2.6 Different Names for the Same Person
 - 9.2.2.7 Change of Name
 - 9.2.2.8 Individuals with More Than One Identity
 - + 9.2.2.9 General Guidelines on Recording Names Containing a

[About](#) | [Help](#) | [Feedback](#)

GET STARTED WITH THE RDA TOOLKIT!

It's as easy as . . .

Log in to Your Subscription

If your institution's name is visible in the upper right corner of the window, then you're already logged into your subscription. If not, enter your subscription Account ID and Password in the login boxes.

Create a User Profile

Next, create a User Profile by clicking the "Create" button. If you already have a User Profile, enter your Profile Name and Password in the login boxes. Solo-users are automatically logged into their User Profile when they log into their subscription.

Browse or Search

On the RDA tab to the left, click the plus sign to expand and browse the RDA table of contents. On the Tools tab you can browse the RDA Element Set as well as workflows and maps. Search RDA only from the "RDA Quick Search" box above, or use Advanced Search to search RDA and other documents.

Need Assistance?

- Click the "Help" link in the lower left corner to visit our Quick Start Guide
- [Request Support](#)
- For an overview of RDA: Resource Description and Access and the RDA Toolkit—including how to create a User Profile, to browse and search, to use workflows and mappings, and to leverage your existing knowledge of AACR2 and MARC as an entry into RDA cataloging

RDA TOOLS RESOURCES

- + 7: Describing Content
- Section 3: Recording Attributes of Person, Family, & Corporate Body
- + 8: General Guidelines on Recording Attributes of Persons, Families, and Corporate Bodies
- 9: Identifying Persons
 - 9.0 Purpose and Scope
 - + 9.1 General Guidelines on Identifying Persons
 - 9.2 Name of the Person
 - + 9.2.1 Basic Instructions on Recording Names of Persons
 - 9.2.2 Preferred Name for the Person
 - 9.2.2.1 Scope
 - 9.2.2.2 Sources of Information
 - 9.2.2.3 Choosing the Preferred Name
 - 9.2.2.4 Recording the Preferred Name
 - + 9.2.2.5 Different Forms of the Same Name
 - 9.2.2.6 Different Names for the Same Person
 - 9.2.2.7 Change of Name
 - 9.2.2.8 Individuals with More Than One Identity
 - + 9.2.2.9 General Guidelines on Recording Names Containing a

[1] 2 3 4

RDA Quick Search



9.2.2.3 Choosing the Preferred Name

In general, choose the name by which the person is commonly known as the preferred name for that person. The name chosen may be the person's real name, pseudonym, title of nobility, nickname, initials, or other appellation. For additional instructions on choosing the preferred name for a person known by more than one form of the same name or by more than one name, see [9.2.2.5–9.2.2.8 RDA](#).

EXAMPLE

Caedmon

William Shakespeare

D.W. Griffith

not David Wark Griffith

Tony Blair

not Anthony Charles Lynton Blair

Fats Domino

not Antoine Domino

Capability Brown

not Lancelot Brown

*Schneller geht's mit dem seit kurzem
vorhandenen Gesamtinhaltsverzeichnis*

RDA TOOLS RESOURCES

RDA TABLE OF CONTENTS

- RDA

RDA Table of Contents

- + 0: Introduction
- Section 1: Recording Attributes of Manifestation & Item
 - + 1: General Guidelines on Recording Attributes of Manifestations and Items
 - + 2: Identifying Manifestations and Items
 - + 3: Describing Carriers
 - + 4: Providing Acquisition and Access Information
- Section 2: Recording Attributes of Work & Expression
 - + 5: General Guidelines on Recording Attributes of Works and Expressions
 - + 6: Identifying Works and Expressions
 - + 7: Describing Content
- Section 3: Recording Attributes of Person, Family, & Corporate Body
 - + 8: General Guidelines on Recording Attributes of Persons, Families, and Corporate Bodies
 - 9: Identifying Persons
 - 9.0 Purpose and Scope
 - + 9.1 General Guidelines on Identifying Persons
 - 9.2 Name of the Person
 - + 9.2.1 Basic Instructions on

About | Help | Feedback

0: Introduction [RDA](#)

0.0: Purpose and Scope [RDA](#)

0.1: Key Features [RDA](#)

0.2: Relationship to Other Standards for Resource Description and Access [RDA](#)

0.3: Conceptual Models Underlying RDA [RDA](#)

0.4: Objectives and Principles Governing Resource Description and Access [RDA](#)

0.5: Structure [RDA](#)

0.6: Core Elements [RDA](#)

0.7: Access Points [RDA](#)

0.8: Alternatives and Options [RDA](#)

0.9: Exceptions [RDA](#)

0.10: Examples [RDA](#)

0.11: Internationalization [RDA](#)

Im Textfeld kann innerhalb eines Kapitels beliebig geblättert werden

RDA TOOLS RESOURCES

- + 4: Providing Acquisition and Access Information
- Section 2: Recording Attributes of Work & Expression
 - + 5: General Guidelines on Recording Attributes of Works and Expressions
 - + 6: Identifying Works and Expressions
 - + 7: Describing Content
- Section 3: Recording Attributes of Person, Family, & Corporate Body
 - + 8: General Guidelines on Recording Attributes of Persons, Families, and Corporate Bodies
 - 9: Identifying Persons
 - 9.0 Purpose and Scope
 - + 9.1 General Guidelines on Identifying Persons
 - 9.2 Name of the Person
 - + 9.2.1 Basic Instructions on Recording Names of Persons
 - 9.2.2 Preferred Name for the Person
 - 9.2.2.1 Scope
 - 9.2.2.2 Sources of Information
 - 9.2.2.3 Choosing the Preferred Name
 - 9.2.2.4 Recording the Preferred Name
 - + 9.2.2.5 Different Forms of the Same Name

[1] 2 3 4

9.2.2.6 Different Names for the Same Person

If a person other than one who:

- a) has changed his or her name (see 9.2.2.7 RDA)

or

- b) has more than one identity (see 9.2.2.8 RDA)

is known by more than one name, choose the name by which the person is clearly most commonly known, if there is one, as the preferred name.

Otherwise, choose the preferred name according to the following order of preference:

- a) the name that appears most frequently in resources associated with the person
- b) the name that appears most frequently in reference sources
- c) the latest name.

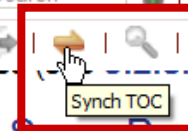
Record the other names by which the person is known as variant names (see 9.2.3 RDA).

9.2.2.7 Change of Name

If a person other than one who has more than one identity (see 9.2.2.8 RDA) has changed his or her

- 9.2 Name of the Person
 - + 9.2.1 Basic Instructions for Recording Names of Persons
 - 9.2.2 Preferred Name for the Person
 - 9.2.2.1 Scope
 - 9.2.2.2 Sources of Information
 - 9.2.2.3 Choosing the Preferred Name
 - 9.2.2.4 Recording the Preferred Name
 - + 9.2.2.5 Different Forms of the Same Name
 - 9.2.2.6 Different Names for the Same Person**
 - 9.2.2.7 Change of Name
 - 9.2.2.8 Individuals with More Than One Identity
 - + 9.2.2.9 General Guidelines on Recording Names Containing a Surname
 - + 9.2.2.10 Compound Surnames
 - + 9.2.2.11 Surnames with Separately Written Prefixes
 - 9.2.2.12 Prefixes Hyphenated or Combined with Surnames

Über „Synch TOC“ kann der Navigationsbaum wieder synchronisiert werden



9.2.2.6 Different Names for the Same Person

If a person other than one who:

- a) has changed his or her name (see 9.2.2.7 RDA)
- or*
- b) has more than one identity (see 9.2.2.8 RDA)

is known by more than one name, choose the name by which the person is clearly most commonly known, if there is one, as the preferred name.

Otherwise, choose the preferred name according to the following order of preference:

- a) the name that appears most frequently in resources associated with the person
- b) the name that appears most frequently in reference sources
- c) the latest name.

Record the other names by which the person is known as variant names (see 9.2.3 RDA).

9.2.2.7 Change of Name

If a person other than one who has more than one identity (see 9.2.2.8 RDA) has changed his or her

Markierung für Kernelemente

- RDA
- TOOLS
- RESOURCES

- + 7: Describing Content
- Section 3: Recording Attributes of Person, Family, & Corporate Body
- + 8: General Guidelines on Recording Attributes of Persons, Families, and Corporate Bodies
- 9: Identifying Persons
 - 9.0 Purpose and Scope
 - + 9.1 General Guidelines on Identifying Persons
 - 9.2 Name of the Person
 - + 9.2.1 Basic Instructions on Recording Names of Persons
 - 9.2.2 Preferred Name for the Person
 - 9.2.2.1 Scope
 - 9.2.2.2 Sources of Information
 - 9.2.2.3 Choosing the Preferred Name
 - 9.2.2.4 Recording the Preferred Name
 - + 9.2.2.5 Different Forms of the Same Name
 - 9.2.2.6 **Different Names for the Same Person**
 - 9.2.2.7 Change of Name
 - 9.2.2.8 Individuals with More Than One Identity
 - + 9.2.2.9 General Guidelines on Recording Names

[Link zum Glossar](#)

2.4 Statement of Responsibility

CORE ELEMENT

Statement of responsibility relating to title proper is a core element. Other statements of responsibility are optional.

2.4.1 Basic Instructions on Recording Statements of Responsibility

2.4.1.1 Scope

A **statement of responsibility** is a statement relating to the identification and/or function of any persons, families, or corporate bodies responsible for the creation of, or contributing to the realization of, the intellectual or artistic content of a resource.

A statement of responsibility may include words or phrases that are neither names nor linking words.

Statements of responsibility may occur in association with a title (see 2.4.2 RDA—2.4.3 RDA), a designation of edition (see 2.5.4 RDA—2.5.5 RDA), a designation of a named revision of an edition (see 2.5.8 RDA—2.5.9 RDA), the title of a series (see 2.12.6 RDA—2.12.7 RDA), or the title of a subseries (see 2.12.14 RDA—2.12.15 RDA).

For statements identifying performers of music whose

- + 7: Describing Content
- Section 3: Recording Attributes of Person, Family, & Corporate Body
- + 8: General Guidelines on Recording Attributes of Persons, Families, and Corporate Bodies
- 9: Identifying Persons
 - 9.0 Purpose and Scope
 - + 9.1 General Guidelines on Identifying Persons
 - 9.2 Name of the Person
 - + 9.2.1 Basic Instructions on Recording Names of Persons
 - 9.2.2 Preferred Name for the Person
 - 9.2.2.1 Scope
 - 9.2.2.2 Sources of Information
 - 9.2.2.3 Choosing the Preferred Name
 - 9.2.2.4 Recording the Preferred Name
 - + 9.2.2.5 Different Forms of the Same Name
 - 9.2.2.6 **Different Names for the Same Person**
 - 9.2.2.7 Change of Name
 - 9.2.2.8 Individuals with More Than One Identity
 - + 9.2.2.9 General Guidelines on Recording Names

Statement of Responsibility

A statement relating to the identification and/or function of any persons, families, or corporate bodies responsible for the creation of, or contributing to the realization of, the intellectual or artistic content of a resource.

Statement of Responsibility Relating to a Named Revision of an Edition

A statement relating to the identification of any persons, families, or corporate bodies responsible for a named revision of an edition.

Statement of Responsibility Relating to Series

A statement relating to the identification of any persons, families, or corporate bodies responsible for a series.

Statement of Responsibility Relating to Subseries

A statement relating to the identification of any persons, families, or corporate bodies responsible for a subseries.

Statement of Responsibility Relating to the Edition

A statement relating to the identification of any persons, families, or corporate bodies responsible for the edition being described but not to all editions.

Statement of Responsibility Relating to Title Proper

A statement associated with the title proper of a resource that relates to the

Anzeige einer Standardregel (ohne Strich)

RDA TOOLS RESOURCES

- + 7: Describing Content
- Section 3: Recording Attributes of Person, Family, & Corporate Body
- + 8: General Guidelines on Recording Attributes of Persons, Families, and Corporate Bodies
- 9: Identifying Persons
 - 9.0 Purpose and Scope
 - + 9.1 General Guidelines on Identifying Persons
 - 9.2 Name of the Person
 - + 9.2.1 Basic Instructions on Recording Names of Persons
 - 9.2.2 Preferred Name for the Person
 - 9.2.2.1 Scope
 - 9.2.2.2 Sources of Information
 - 9.2.2.3 Choosing the Preferred Name
 - 9.2.2.4 Recording the Preferred Name
 - + 9.2.2.5 Different Forms of the Same Name
 - 9.2.2.6 **Different Names for the Same Person**
 - 9.2.2.7 Change of Name
 - 9.2.2.8 Individuals with More Than One Identity
 - + 9.2.2.9 General Guidelines on Recording Names

1 2 [3] 4 5 6 7 8 9 10 11 12

2.4.1.4 Recording Statements of Responsibility

LCPS

Transcribe a statement of responsibility in the form in which it appears on the source of information. Apply the general guidelines on transcription given under 1.7

RDA.

EXAMPLE

by Walter de la Mare

Fats Waller

by Dr. Johnson

by Sir Richard Acland

by Alfred, Lord Tennyson

by a Lady of Quality

par Charles M. Schultz

directed and produced by the Beatles

af Martin A. Hansen

Anzeige einer Optionsregel (mit Strich)

RDA TOOLS RESOURCES

- + 7: Describing Content
- Section 3: Recording Attributes of Person, Family, & Corporate Body
- + 8: General Guidelines on Recording Attributes of Persons, Families, and Corporate Bodies
- 9: Identifying Persons
 - 9.0 Purpose and Scope
 - + 9.1 General Guidelines on Identifying Persons
 - 9.2 Name of the Person
 - + 9.2.1 Basic Instructions on Recording Names of Persons
 - 9.2.2 Preferred Name for the Person
 - 9.2.2.1 Scope
 - 9.2.2.2 Sources of Information
 - 9.2.2.3 Choosing the Preferred Name
 - 9.2.2.4 Recording the Preferred Name
 - + 9.2.2.5 Different Forms of the Same Name
 - 9.2.2.6 **Different Names for the Same Person**
 - 9.2.2.7 Change of Name
 - 9.2.2.8 Individuals with More Than One Identity
 - + 9.2.2.9 General Guidelines on Recording Names

1 2 [3] 4 5 6 7 8 9 10 11 12

Optional Omission **LCPS**

Abridge a statement of responsibility only if it can be abridged without loss of essential information. Do not use a mark of omission (...) to indicate such an omission. Always record the first name appearing in the statement. When omitting names from a statement of responsibility naming more than one person, etc., apply the instructions given under **2.4.1.5 RDA**.

EXAMPLE

by Harry Smith
Source of information reads: by Dr. Harry Smith

Charles F. Hoban, Jr.
Source of information reads: Charles F. Hoban, Jr., Special Assistant, Division of Visual Education, Philadelphia Public Schools

sponsored by the Library Association
Source of information reads: sponsored by the Library Association (founded 1877)

Exception

Lesezeichen setzen (optional mit Kommentar)

RDA TOOLS RESOURCES

- + 7: Describing Content
- Section 3: Recording Attributes of Person, Family, & Corporate Body
- + 8: General Guidelines on Recording Attributes of Persons, Families, and Corporate Bodies
- 9: Identifying Persons
 - 9.0 Purpose and Scope
 - + 9.1 General Guidelines on Identifying Persons
 - 9.2 Name of the Person
 - + 9.2.1 Basic Instructions on Recording Names of Persons
 - 9.2.2 Preferred Name for the Person
 - 9.2.2.1 Scope
 - 9.2.2.2 Sources of Information
 - 9.2.2.3 Choosing the Preferred Name
 - 9.2.2.4 Recording the Preferred Name
 - + 9.2.2.5 Different Forms of the Same Name
 - 9.2.2.6 **Different Names for the Same Person**
 - 9.2.2.7 Change of Name
 - 9.2.2.8 Individuals with More Than One Identity
 - + 9.2.2.9 General Guidelines on Recording Names

1 2 [3] 4 5 6 7 8 9 10 11 12

RDA Quick Search



Optional Omission LCPS

Abride a statement of responsibility only if it can be abridged without loss of essential information. Do not use a mark of omission (...) to indicate such an omission. Always record the first name appearing in the statement. When omitting names from a statement of responsibility naming more than one person, etc., apply the instructions given under [2.4.1.5 RDA](#).

EXAMPLE

by Harry Smith

Source of information reads: by Dr. Harry Smith

Charles F. Hoban, Jr.

Source of information reads: Charles F. Hoban, Jr., Special Assistant, Division of Visual Education, Philadelphia Public Schools

sponsored by the Library Association

Source of information reads: sponsored by the Library Association (founded 1877)

Exception

Lesezeichen: Namen und ggf. Kommentar eingeben

RDA TOOLS RESOURCES

- + 7: Describing Content
- Section 3: Recording Attributes of Person, Family, & Corporate Body
- + 8: General Guidelines on Recording Attributes of Persons, Families, and Corporate Bodies
- 9: Identifying Persons
 - 9.0 Purpose and Scope
 - + 9.1 General Guidelines on Identifying Persons
 - 9.2 Name of the Person
 - + 9.2.1 Basic Instructions on Recording Names of Persons
 - 9.2.2 Preferred Name for the Person
 - 9.2.2.1 Scope
 - 9.2.2.2 Sources of Information
 - 9.2.2.3 Choosing the Preferred Name
 - 9.2.2.4 Recording the Preferred Name
 - + 9.2.2.5 Different Forms of the Same Name
 - 9.2.2.6 **Different Names for the Same Person**
 - 9.2.2.7 Change of Name
 - 9.2.2.8 Individuals with More Than One Identity
 - + 9.2.2.9 General Guidelines on Recording Names

1 2 [3] 4 5 6 7 8 9 10

Add Bookmark

Bookmark Name

Bookmark Annotation

by Harry Smith
 Source of information reads: by Dr. Harry Smith

Charles F. Hoban, Jr.
 Source of information reads: Charles F. Hoban, Jr., Special Assistant, Division of Visual Education, Philadelphia Public Schools

sponsored by the Library Association
 Source of information reads: sponsored by the Library Association (founded 1877)

Exception

Anzeige von Lesezeichen und Kommentar

RDA TOOLS RESOURCES

- + 7: Describing Content
- Section 3: Recording Attributes of Person, Family, & Corporate Body
- + 8: General Guidelines on Recording Attributes of Persons, Families, and Corporate Bodies
- 9: Identifying Persons
 - 9.0 Purpose and Scope
 - + 9.1 General Guidelines on Identifying Persons
 - 9.2 Name of the Person
 - + 9.2.1 Basic Instructions on Recording Names of Persons
 - 9.2.2 Preferred Name for the Person
 - 9.2.2.1 Scope
 - 9.2.2.2 Sources of Information
 - 9.2.2.3 Choosing the Preferred Name
 - 9.2.2.4 Recording the Preferred Name
 - + 9.2.2.5 Different Forms of the Same Name
 - 9.2.2.6 Different Names for the Same Person
 - 9.2.2.7 Change of Name
 - 9.2.2.8 Individuals with More Than One Identity
 - + 9.2.2.9 General Guidelines on Recording Names

1 2 [3] 4 5 6 7 8 9 10



Wir wenden die Optionsregelung an, d.h. Personalangaben werden weiterhin weggelassen (wie nach RAK)

Optional Omission LCPS

Abridge a statement of responsibility only if it can be identified as essential information. (...) to indicate such an omission. Always record the first name appearing in the statement. When omitting names from a statement of responsibility naming more than one person, etc., apply the instructions given under 2.4.1.5 RDA.

EXAMPLE

by Harry Smith
Source of information reads: by Dr. Harry Smith

Charles F. Hoban, Jr.
Source of information reads: Charles F. Hoban, Jr., Special Assistant, Division of Visual Education, Philadelphia Public Schools

sponsored by the Library Association
Source of information reads: sponsored by the Library Association (founded 1877)

Exception

Link auf die „Library of Congress policy statements“ (LCPS)

RDA TOOLS RESOURCES

- + 7: Describing Content
- Section 3: Recording Attributes of Person, Family, & Corporate Body
- + 8: General Guidelines on Recording Attributes of Persons, Families, and Corporate Bodies
- 9: Identifying Persons
 - 9.0 Purpose and Scope
 - + 9.1 General Guidelines on Identifying Persons
 - 9.2 Name of the Person
 - + 9.2.1 Basic Instructions on Recording Names of Persons
 - 9.2.2 Preferred Name for the Person
 - 9.2.2.1 Scope
 - 9.2.2.2 Sources of Information
 - 9.2.2.3 Choosing the Preferred Name
 - 9.2.2.4 Recording the Preferred Name
 - + 9.2.2.5 Different Forms of the Same Name
 - 9.2.2.6 **Different Names for the Same Person**
 - 9.2.2.7 Change of Name
 - 9.2.2.8 Individuals with More Than One Identity
 - + 9.2.2.9 General Guidelines on Recording Names

1 2 [3] 4 5 6 7 8 9 10 11 12

Optional Omission **LCPS**

Abridge a statement of responsibility only if it can be abridged without loss of essential information. Do not use a mark of omission (...) to indicate such an omission. Always record the first name appearing in the statement. When omitting names from a statement of responsibility naming more than one person, etc., apply the instructions given under 2.4.1.5 **RDA**.

EXAMPLE

by Harry Smith

Source of information reads: by Dr. Harry Smith

Charles F. Hoban, Jr.

Source of information reads: Charles F. Hoban, Jr., Special Assistant, Division of Visual Education, Philadelphia Public Schools

sponsored by the Library Association

Source of information reads: sponsored by the Library Association (founded 1877)

Exception

Angabe des LCPS (=Praxis der LoC) zur Optionsregelung

RDA TOOLS RESOURCES

- + AACR2
- + Library of Congress Policy Statements (LCPS)
- + Other Resources

1 2 3 [4] 5 6 7

LCPS for 2.4.1.4

RDA

OPTION

LC practice for Optional omission: Generally do not abridge a statement of responsibility.

[2010-02]

LCPS for 2.4.1.5

RDA

OPTION

LC practice for Optional omission: Generally do not omit names in a statement of responsibility.

[2010-02]

LCPS for 2.5.1.4

RDA

Anzeige so einstellen, dass nur Kernelemente angezeigt werden

RDA TOOLS RESOL

Concepts, Objects, Events, Places

13: Identifying Concepts

14: Identifying Objects

15: Identifying Events

+ 16: Identifying Places

- Section 5: Recording Primary Relationships Between Work, Expression, Manifestation, & Item

+ 17: General Guidelines on Recording Primary Relationships

- Section 6: Recording Relationships to Persons, Families, & Corporate Bodies

+ 18: General Guidelines on Recording Relationships to Persons, Families, and Corporate Bodies Associated with a Resource

+ 19: Persons, Families, and Corporate Bodies Associated with a Work

- 20: Persons, Families, and Corporate Bodies Associated with an Expression

20.0 Purpose and Scope

+ 20.1 General Guidelines on Recording Persons, Families, and Corporate Bodies Associated with an Expression

+ 20.2 Contributor

+ 21: Persons, Families, and Corporate Bodies Associated with a Manifestation

About | Help | Feedback

<http://access.rdatoolkit.org/document.php?id=rdachp20&target=rda20-97#>

20.2.1 Basic Instructions on Recording Contributors

20.2.1.1 Scope

A **contributor** is a person, family, or corporate body contributing to the realization of a work through an expression.

Contributors include editors, translators, arrangers of music, performers, etc.

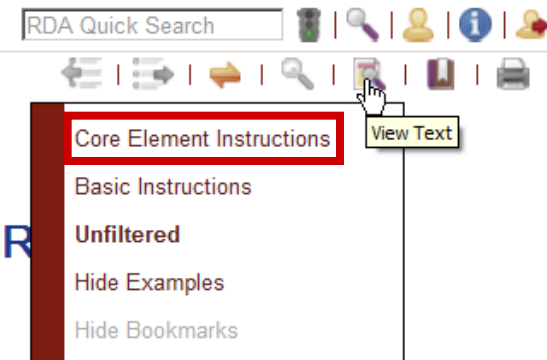
For expressions consisting of a primary work accompanied by commentary, etc., illustrations, additional musical parts, etc., the writers of commentary, etc., illustrators, composers of additional parts, etc., are considered to be contributors.

20.2.1.2 Sources of Information

Take information on contributors from the sources specified under [20.1.1 RDA](#)

20.2.1.3 Recording Contributors **LCPS**

Record a contributor applying the general guidelines on recording relationships to persons, families, and



„Contributor“ wird nicht mehr
angezeigt (kein Kernelement)

RDA TOOLS RESOURCES

Filtered Core

Concepts, Objects, Events, and Places

13: Identifying Concepts

14: Identifying Objects

15: Identifying Events

+ 16: Identifying Places

- Section 5: Recording Primary Relationships Between Work, Expression, Manifestation, & Item

+ 17: General Guidelines on Recording Primary Relationships

- Section 6: Recording Relationships to Persons, Families, & Corporate Bodies

+ 18: General Guidelines on Recording Relationships to Persons, Families, and Corporate Bodies Associated with a Resource

+ 19: Persons, Families, and Corporate Bodies Associated with a Work

- 20: Persons, Families, and Corporate Bodies Associated with an Expression

20.0 Purpose and Scope

+ 20.1 General Guidelines on Recording Persons, Families, and Corporate Bodies Associated with an Expression

+ 20.2 Contributor

+ 21: Persons, Families, and Corporate Bodies Associated with a Manifestation

About | Help | Feedback

20

PERSONS, FAMILIES, AND CORPORATE BODIES ASSOCIATED WITH AN EXPRESSION

Document Date: 6/22/2010

Document: <http://access.rdatoolkit.org/rdachp20.html>

Schnellsuche (auch Eingabe
von Paragraphennummern
möglich)

translator

INTRODUCTION

0.0 Purpose and Scope LCPS

RDA provides a set of guidelines and instructions on formulating data to support resource discovery.

The data created using RDA to describe a resource are designed to assist users performing the following tasks: ¹

find—i.e., to find resources that correspond to the user's stated search criteria

identify—i.e., to confirm that the resource described corresponds to the resource sought, or to distinguish between two or more resources with similar characteristics

select—i.e., to select a resource that is appropriate to the user's needs

obtain—i.e., to acquire or access the resource described.

The data created using RDA to describe an entity associated with a resource (a

RDA TOOLS R

- RDA

RDA Table of Contents

- + 0: Introduction
- Section 1: Recording Attributes of Manifestation & Item
 - + 1: General Guidelines on Recording Attributes of Manifestations and Items
 - + 2: Identifying Manifestations and Items
 - + 3: Describing Carriers
 - + 4: Providing Acquisition and Access Information
- Section 2: Recording Attributes of Work & Expression
 - + 5: General Guidelines on Recording Attributes of Works and Expressions
 - + 6: Identifying Works and Expressions
 - + 7: Describing Content
- Section 3: Recording Attributes of Person, Family, & Corporate Body
 - + 8: General Guidelines on Recording Attributes of Persons, Families, and Corporate Bodies
 - 9: Identifying Persons
 - 9.0 Purpose and Scope
 - + 9.1 General Guidelines on Identifying Persons
 - 9.2 Name of the Person
 - + 9.2.1 Basic Instructions on

About | Help | Feedback

- RDA

RDA Table of Contents

- + 0: Introduction
- Section 1: Recording Attributes of Manifestation & Item
 - + 1: General Guidelines on Recording Attributes of Manifestations and Items
 - + 2: Identifying Manifestations and Items
 - + 3: Describing Carriers
 - + 4: Providing Acquisition and Access Information
- Section 2: Recording Attributes of Work & Expression
 - + 5: General Guidelines on Recording Attributes of Works and Expressions
 - + 6: Identifying Works and Expressions

Enter Phrase or String to Search ...

Select Document(s) to Search ...

- + **RDA**
- + **RDA: Element Set**
- + **RDA Mappings**
- + **Workflows**
- + **Maps**
- + **Entity Relationship Diagram (ERD)**
- + **AACR2**
- + **Library of Congress Policy Statements (LCPS)**



Save Search as ...

Select Metadata to Limit Search By ...

Exclude Examples

AACR2 Rule Number (RDA Only)

Tip: Enter Operators between Numbers as needed

RDA Instruction Types (RDA Only)

- All Instruction Numbers
- All Description Types
- All Content Types
- All Media Types
- All Issuance Types
- All Work Types

Search

Konkordanzen (u.a. RDA / MARC 21)

RDA TOOLS RESOURCES

+ RDA: Element Set

- RDA Mappings

- RDA to MARC Bibliographic Mapping
- MARC Bibliographic to RDA Mapping
- RDA to MARC Authority Mapping
- MARC Authority to RDA Mapping
- RDA to MODS Mapping

- Examples of RDA Records (JSC)

MARC Encoding

+ Workflows

+ Maps

+ Entity Relationship Diagram (ERD)

+ Schemas

About | Help | Feedback

100			Main entry—Personal name	19.2 RDA	Creator
100			Main entry—Personal name	19.3 RDA	Other Person, Family, or Corporate Body Associated with a Work
100 1st indicator 0 or 1	a		Personal name	9.2.2 RDA	Preferred Name for the Person
100 1st indicator 0 or 1	b		Numeration	9.2.2 RDA	Preferred Name for the Person
100 1st indicator 0 or 1	c		Titles and other words associated with a name	9.4 RDA	Title of the Person
100 1st indicator 0 or 1	c		Titles and other words associated with a name	9.6 RDA	Other Designation Associated with the Person
100 1st indicator 0 or 1	c		Titles and other words associated with a name	9.15 RDA	Field of Activity of the Person
100 1st indicator 0 or 1	c		Titles and other words associated with a name	9.16 RDA	Profession or Occupation
100 1st					

Anlegen eines eigenen Workflows

+ RDA: Element Set View

+ RDA Mappings

- Workflows

- Create Workflow
- + Shared Workflows
- Your Workflows

+ Mappings

+ Entity Relationship Diagram (ERD)

+ Schemas

Create Workflow ...

Name Your Workflow ...

Test-Workflow HW

Create Workflow ...

Create New

Copy Existing

Cancel Go

Editierfenster für Workflows (u.a. mit Einstellung, ob privat oder öffentlich)

Share Mode Private

Quellcode

Stil Format Schriftart Größe

WORKFLOW

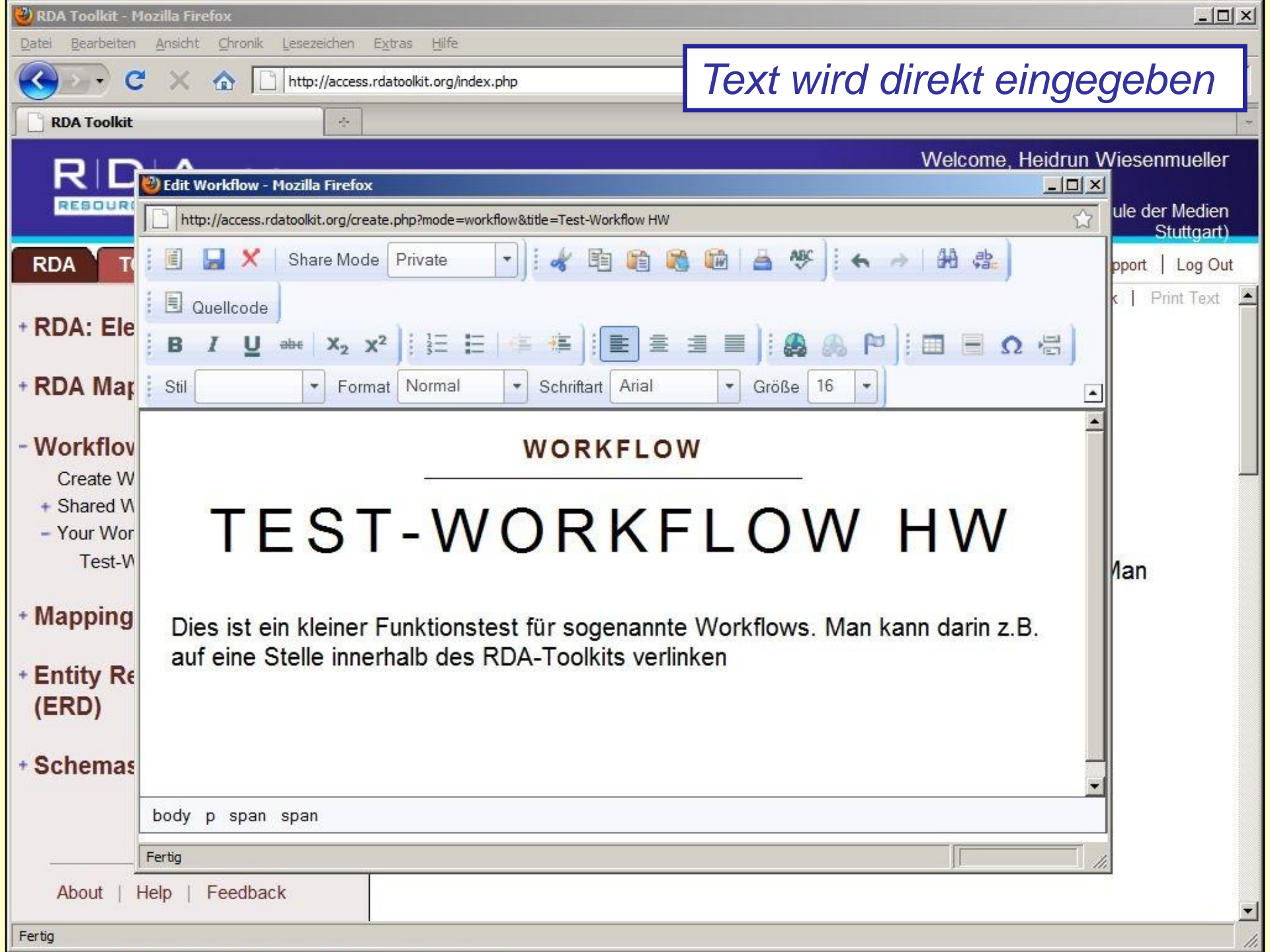
TEST-WORKFLOW HW

Fertig

Related Instructions

Scope (11.9.1.1 [RDA](#))

Address of the corporate body is the address of a corporate



Text wird direkt eingegeben

Share Mode Private
Quellcode
B I U abc x₂ x²
Stil Format Normal Schriftart Arial Größe 16

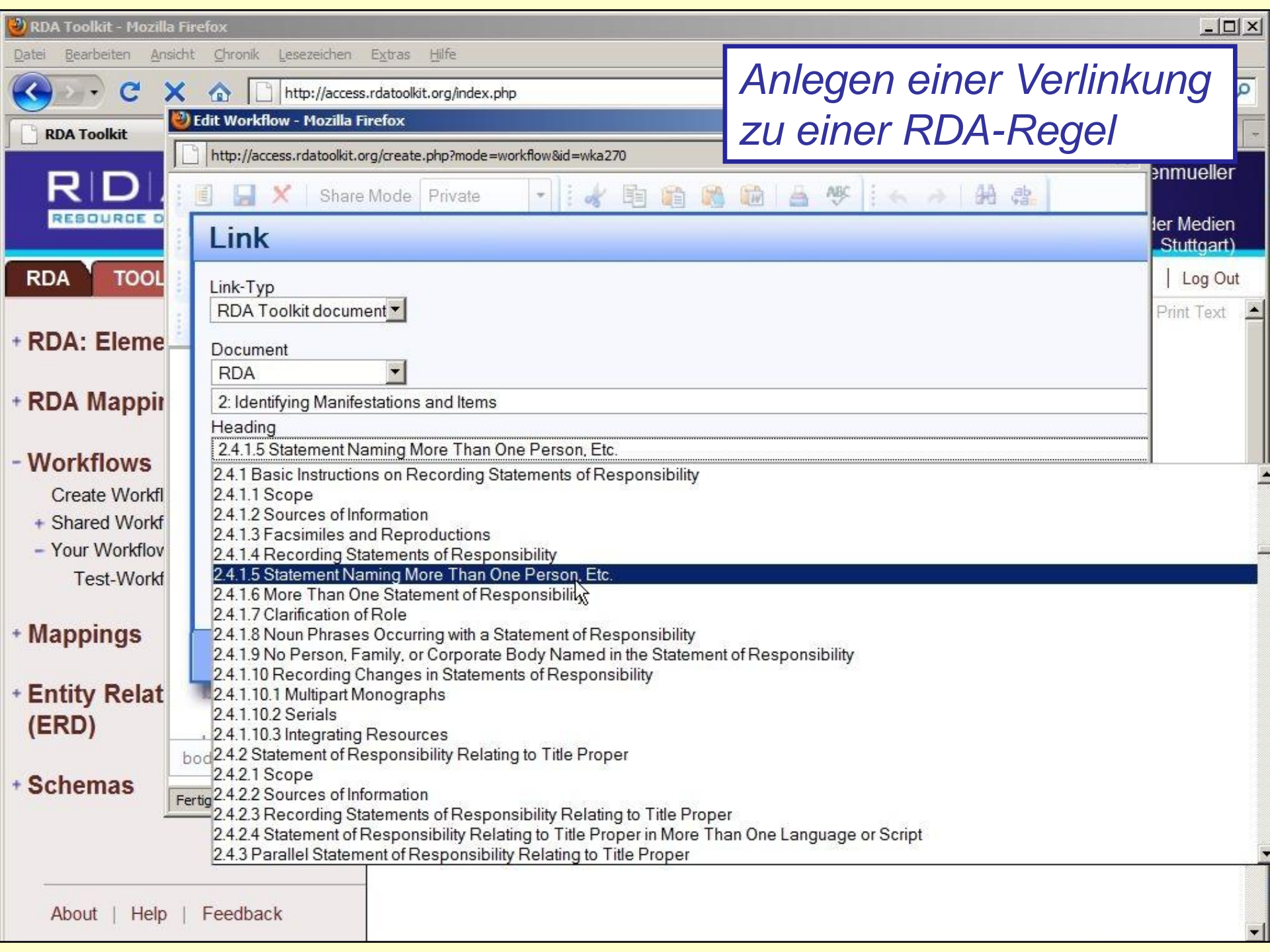
WORKFLOW

TEST-WORKFLOW HW

Dies ist ein kleiner Funktionstest für sogenannte Workflows. Man kann darin z.B. auf eine Stelle innerhalb des RDA-Toolkits verlinken

body p span span

Fertig



Anlegen einer Verlinkung zu einer RDA-Regel

Link

Link-Typ
RDA Toolkit document

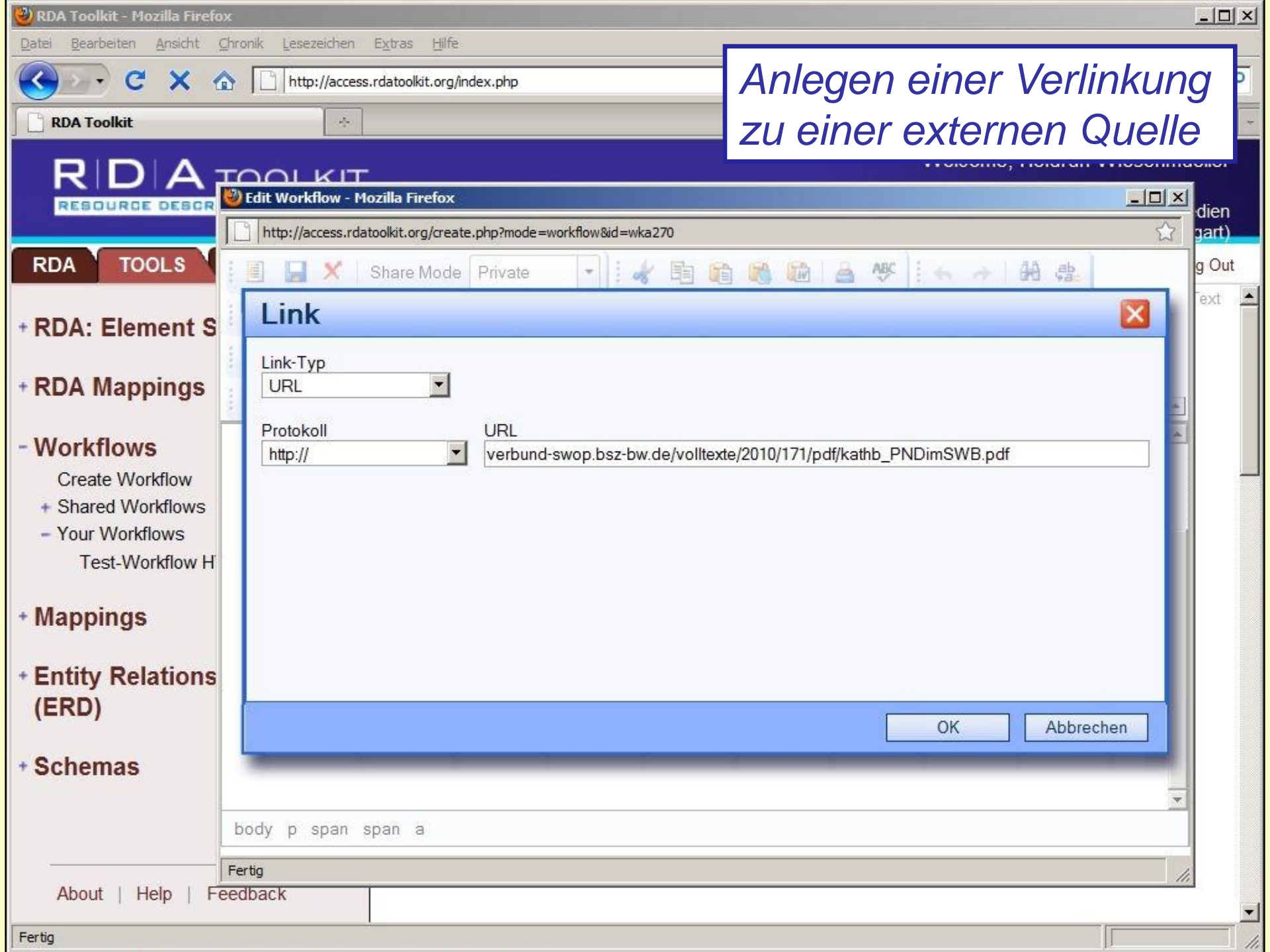
Document
RDA

2: Identifying Manifestations and Items

Heading

- 2.4.1.5 Statement Naming More Than One Person, Etc.
- 2.4.1 Basic Instructions on Recording Statements of Responsibility
 - 2.4.1.1 Scope
 - 2.4.1.2 Sources of Information
 - 2.4.1.3 Facsimiles and Reproductions
 - 2.4.1.4 Recording Statements of Responsibility
 - 2.4.1.5 Statement Naming More Than One Person, Etc.
 - 2.4.1.6 More Than One Statement of Responsibility
 - 2.4.1.7 Clarification of Role
 - 2.4.1.8 Noun Phrases Occurring with a Statement of Responsibility
 - 2.4.1.9 No Person, Family, or Corporate Body Named in the Statement of Responsibility
 - 2.4.1.10 Recording Changes in Statements of Responsibility
 - 2.4.1.10.1 Multipart Monographs
 - 2.4.1.10.2 Serials
 - 2.4.1.10.3 Integrating Resources
- 2.4.2 Statement of Responsibility Relating to Title Proper
 - 2.4.2.1 Scope
 - 2.4.2.2 Sources of Information
 - 2.4.2.3 Recording Statements of Responsibility Relating to Title Proper
 - 2.4.2.4 Statement of Responsibility Relating to Title Proper in More Than One Language or Script
- 2.4.3 Parallel Statement of Responsibility Relating to Title Proper

Anlegen einer Verlinkung
zu einer externen Quelle



Anzeige des Workflows

- + RDA: Element Set View
- + RDA Mappings
- Workflows
 - Create Workflow
 - + Shared Workflows
 - Your Workflows
 - Test-Workflow HW
- + Mappings
- + Entity Relationship Diagram (ERD)
- + Schemas

WORKFLOW

TEST-WORKFLOW HW

Dies ist ein kleiner Funktionstest für sogenannte Workflows. Man kann darin z.B. auf eine Stelle innerhalb des RDA-Toolkits verlinken, z.B. auf einen RDA-Paragrafen [2.4.1.5 RDA](#)

Oder man verlinkt auf externe Dokumente http://verbundswop.bsz-bw.de/volltexte/2010/171/pdf/kathb_PNDimSWB.pdf

Und es sind sicher auch viele mehr oder weniger sinnvolle **Spielerereien** möglich!

Beispiel für einen öffentlichen Workflow der Library of Congress ...

RDA TOOLS RESOURCES

- Workflows

- Create Workflow
- Shared Workflows
 - Archival Collections
 - Braille fiction
 - Braille music
 - Cataloging a print serial
 - CONSER RDA Cataloging Checklist for Textual Serials (DRAFT)
 - Courtauld exhibition catalogues
 - Electronic Books workflow
 - GCElectronicres
 - Glossarium (Nederlands)
 - GSLIS UIUC Cartographic Resources (Bothmann)
 - LC Staff: Adding Attributes For Persons with Surnames and Given Names
 - LC Staff: Simple Book (MARC)
 - LC Staff: Simple Book
 - LC Staff: Simple Multipart Book (MARC)
 - LC Staff: Simple Multipart Book
 - LC Staff: Transcribing
 - Mary's Test of Simple Book Workflow
 - RDA 199: Basic Modes and Types
 - RDA 199: Controlled Lists of Terms in the RDA Instructions
 - RDA 199: Relationship Designators

LC STAFF: SIMPLE BOOK (MARC)

Use

Open Book Template

Choose the Preferred Source of Information

008/22, 521: Record Intended Audience

008/35-37, 546: Record Language of the Content, Record Script

020, 024, Etc.: Record an Identifier for the Manifestation

1XX, 7XX: Record the Relationship to a Person, Family, or Corporate Body Associated with the Book

245: Transcribe the Title Proper

245: Transcribe Other Title Information

245: Transcribe a Statement of Responsibility Relating to the Title Proper

250: Transcribe an Edition Statement

260: Record the Publication Statement

260: Record a Place of Publication

260: Record a Publisher's Name

260: Record a Date of Publication

... mit Schritt-für-Schritt-Anleitung

RDA TOOLS RESOURCES

- Workflows

- Create Workflow
- Shared Workflows
 - Archival Collections
 - Braille fiction
 - Braille music
 - Cataloging a print serial
 - CONSER RDA Cataloging Checklist for Textual Serials (DRAFT)
 - Courtauld exhibition catalogues
 - Electronic Books workflow
 - GCElectronicres
 - Glossarium (Nederlands)
 - GSLIS UIUC Cartographic Resources (Bothmann)
 - LC Staff: Adding Attributes For Persons with Surnames and Given Names
 - LC Staff: Simple Book (MARC)
 - LC Staff: Simple Book
 - LC Staff: Simple Multipart Book (MARC)
 - LC Staff: Simple Multipart Book
 - LC Staff: Transcribing
 - Mary's Test of Simple Book Workflow
 - RDA 199: Basic Modes and Types
 - RDA 199: Controlled Lists of Terms in the RDA Instructions
 - RDA 199: Relationship Designators

About | Help | Feedback

1XX, 7XX: Record the Relationship to a Person, Family, or Corporate Body Associated with the Book

If the book's preferred source of information identifies a single **person** (such as Thomas L. Friedman or Kermit the Frog) as the creator of the text, record in **100** the **authorized access point** for that creator (RDA 18.3 RDA, RDA 18.4 RDA, RDA 19.2 RDA).

If persons, **families**, or **corporate bodies** related to the book are more complicated than that (for example, there are multiple creators, or a corporate body may be the creator), apply the separate workflow *LC Staff: Construct an Authorized Access Point Representing a Work* [name tentative, not yet drafted] to determine which authorized access point (if any) to record in 1XX.

If there are multiple creators, you may also record in 700, 710, or 711, as appropriate, the authorized access points for any creators not recorded in 1XX, if you think they are important for access (RDA 18.3 RDA).

You may also record in 7XX the authorized access points for other persons, families, or corporate bodies associated with the text or with the book, if you think they are important for access (RDA 18.4 RDA, RDA 19.3 RDA).

You may record in 1XX \$e or in 7XX \$e the **relationship designator** from **RDA Appendix I RDA** that reflects the person's, family's, or corporate body's relationship to the book (such as "author", "compiler", "editor", "translator", or

Es können auch eigene Konkordanzen erstellt werden

RDA Toolkit - Mozilla Firefox

Datei Bearbeiten Ansicht Chronik Lesezeichen Extras Hilfe

http://access.rdatoolkit.org/index.php?action=timeout

RDA Toolkit x RAK-WB 2007

Welcome, Heidrun Wiesenmueller

Stuttgart Media University (Hochschule der Medien Stuttgart)

RDA TOOLS RESOURCES

+ RDA: Element Set View

+ RDA Mappings

+ Workflows

- Mappings

- Create Mapping
- Shared Mappings
 - Kathy's test mapping
 - Mapping
 - RDA to DC (test)
 - Steven's Second Mapping
- Your Mappings
 - RAK zu RDA

+ Entity Relationship Diagram (ERD)

About | Help | Feedback

RDA Quick Search | Advanced Search | My Profile | Support | Log Out

Synch TOC | Return to Results | View Text | Bookmark | Print Text

MAPPING

RAK ZU RDA

RAK-Paragraph	RDA-Regel
Erscheinungsort: § 144 http://www.allegro-c.de/regeln/rwb.htm#144	Place of production 2.7.2 RDA

Document: <http://access.rdatoolkit.org/mpa63.html>

Fertig



- + AACR2
- + Library of Congress Policy Statements (LCPS)
- + Other Resources

GET STARTED WITH THE RDA TOOLKIT!

It's as easy as . . .

Log in to Your Subscription

If your institution's name is visible in the upper right corner of the window, then you're already logged into your subscription. If not, enter your subscription Account ID and Password in the login boxes.

Create a User Profile

Next, create a User Profile by clicking the "Create" button. If you already have a User Profile, enter your Profile Name and Password in the login boxes. Solo-users are automatically logged into their User Profile when they log into their subscription.

Browse or Search

On the RDA tab to the left, click the plus sign to expand and browse the RDA table of contents. On the Tools tab you can browse the RDA Element Set as well as workflows and maps. Search RDA only from the "RDA Quick Search" box above, or use Advanced Search to search RDA and other documents.

Need Assistance?

- Click the "Help" link in the lower left corner to visit our Quick Start Guide
- [Request Support](#)
- For an overview of RDA: Resource Description and Access and the RDA Toolkit—including how to create a User Profile, to browse and search, to use workflows and mappings, and to leverage your existing knowledge of AACR2 and MARC as an entry into RDA cataloging

AACR2 ist komplett enthalten (unter „Resources“)

RDA TOOLS RESOURCES

- + Front Matter
- Part I: Description
 - + Introduction
 - + 1: General Rules for Description
 - + 2: Books, Pamphlets, and Printed Sheets
 - + 3: Cartographic Materials
 - + 4: Manuscripts (Including Manuscript Collections)
 - + 5: Music
 - + 6: Sound Recordings
 - + 7: Motion Pictures and Videorecordings
 - + 8: Graphic Materials
 - + 9: Electronic Resources
 - + 10: Three-Dimensional Artefacts and Realia
 - + 11: Microforms
 - + 12: Continuing Resources
 - + 13: Analysis
- Part II
 - + Introduction: Headings, Uniform Titles, and References
 - 21: Choice of Access Points
 - + 21.0. Introductory Rules
 - 21.1. General Rule
 - + 21.1A. Works of Personal Authorship
 - + 21.1B. Entry Under Corporate Body
 - + 21.1C. Entry under Title

1 [2] 3 4 5 6 7 8 9 10 11 12 13 14 15 16 17

21.1B2. General rule. RDA Enter a work emanating ² from one or more corporate bodies under the heading for the appropriate corporate body (see 21.4B AACR2, 21.5B AACR2) if it falls into one or more of the following categories:

- a) those of an administrative nature dealing with the corporate body itself
 - or its internal policies, procedures, finances, and/or operations
 - or its officers, staff, and/or membership (e.g., directories)
 - or its resources (e.g., catalogues, inventories)
- b) some legal, governmental, and religious works of the following types: ³
 - laws (see 21.31 AACR2)
 - decrees of the chief executive that have the force of law (see 21.31 AACR2)
 - administrative regulations (see 21.32 AACR2)
 - constitutions (see 21.33 AACR2)
 - court rules (see 21.34 AACR2)
 - treaties, etc. (see 21.35 AACR2)
 - court decisions (see 21.36 AACR2)
 - legislative hearings
 - religious laws (e.g., canon law)
 - liturgical works (see 21.39 AACR2)
- c) those that record the collective thought of the body (e.g., reports of