

Supplementary materials

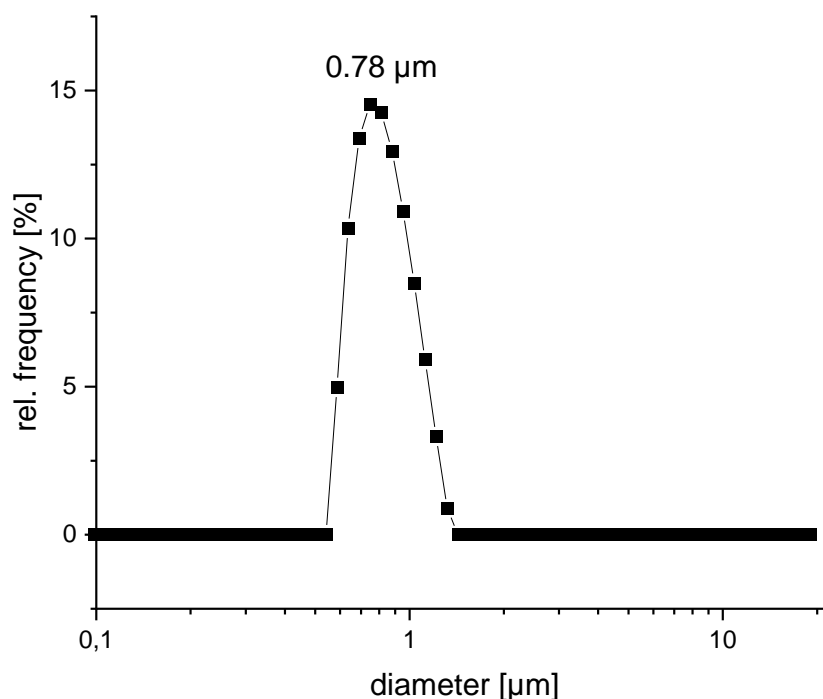
# High-purity corundum as support for affinity extractions from complex samples

Jule L. Völzke, Parya Hodjat Shamami, Kornelia Gawlitza, Ines Feldmann, Annett Zimathies, and Michael G. Weller\*

Federal Institute for Materials Research and Testing (BAM), Richard-Willstätter-Strasse 11, 12489 Berlin, Germany; jule.voelzke@bam.de, parya.hodjat@gmail.com, kornelia.gawlitza@bam.de, ines.feldmann@bam.de, annett.zimathies@bam.de, michael.weller@bam.de

\* Correspondence: michael.weller@bam.de; Tel.: +49-30-8104-1150

## DLS measurements of corundum powder F1200

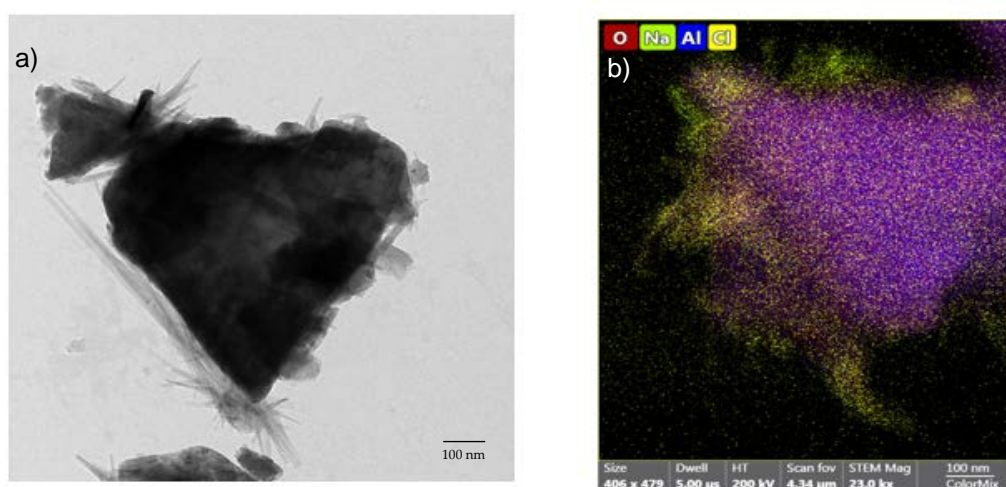


**Figure S1.** Dynamic light scattering (DLS) measurements of corundum F1200 in 0.1 M PBS indicated an average particle size of 0.78 µm.

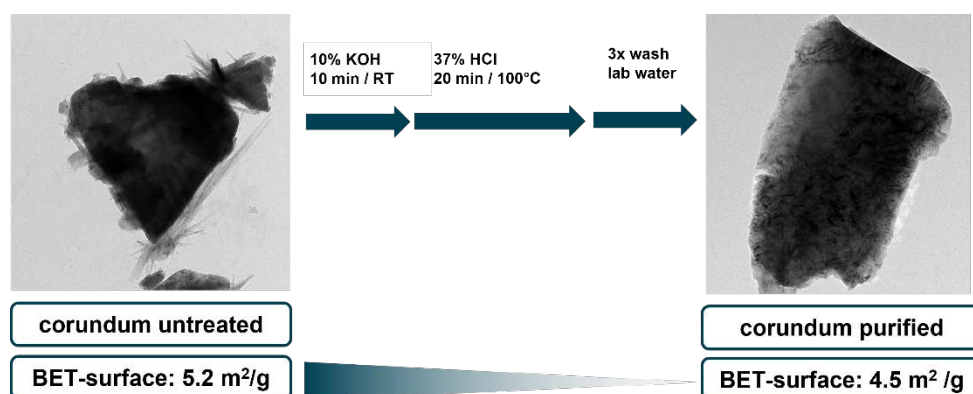
### Purification of corundum

A scanning transmission electron microscope measurement combined with an energy-dispersive X-ray spectroscopy (EDX) analysis revealed that impurities of sodium and chlorine-containing needle-shaped crystal structures were detected covering the corundum surface (Figure S2). A purification protocol was established to eliminate these impurities and form a clean corundum surface (Figure S3). BET- measurements, before the purification protocol was performed, indicated a corundum surface of  $5.2 \text{ m}^2/\text{g}$ , whereas, after the purification, the surface decreased to  $4.5 \text{ m}^2/\text{g}$  (Figure S4). This decrease in surface area was to be expected since the needle-shaped structures had been removed completely.

### TEM images of unpurified and purified corundum

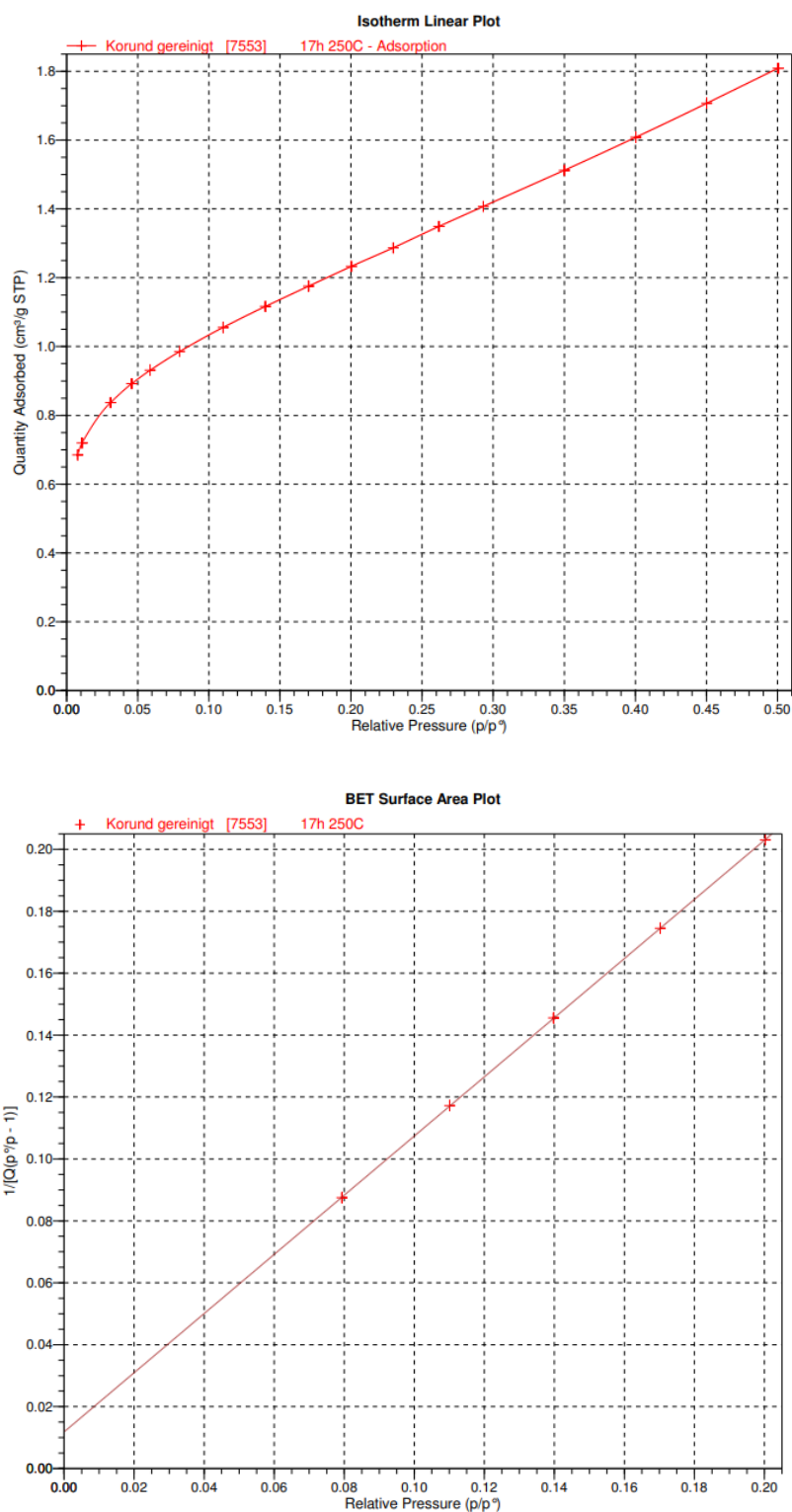


**Figure S2.** TEM micrograph of unpurified corundum. Corundum surface covered with needle-shaped crystals a). Elemental mapping showing sodium- and chloride-containing structures b).



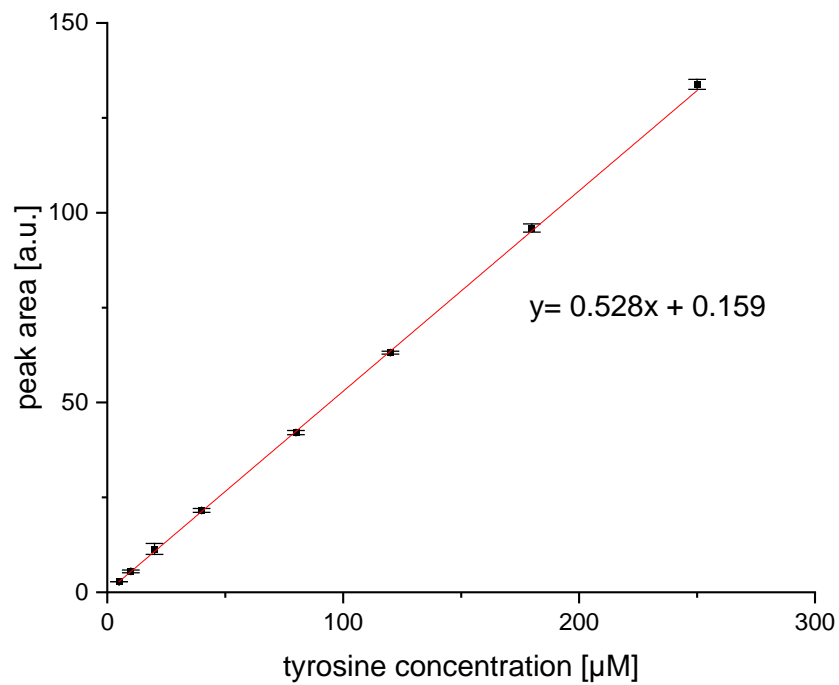
**Figure S3.** Purification protocol for corundum powder.

**BET plots**



**Figure S4.** BET measurements. Isotherm linear plot and BET surface area plot.

## HPLC - Calibration of tyrosine



**Figure S5.** Calibration line of tyrosine (amino acid standard solution). Fluorescence detection was performed at 272 nm (Ex.) and 303 nm (Em.).