

Supplementary Information

Correlative Analysis of the Dimensional Properties of Bipyramidal Titania Nanoparticles by Complementing Electron Microscopy with Other Methods

Loïc Crouzier ^{1,*}, Nicolas Feltin ¹, Alexandra Delvallée ¹, Francesco Pellegrino ², Valter Maurino ², Grzegorz Cios ³, Tomasz Tokarski ³, Christoph Salzmann ⁴, Jerome Deumer ⁵, Christian Gollwitzer ⁵ and Vasile-Dan Hodoroaba ⁴

- ¹ Laboratoire National de métrologie et d'Essais (LNE), 29 Avenue Roger Hennequin, CEDEX, 78197 Trappes, France; nicolas.feltin@lne.fr (N.F.); Alexandra.Delvallee@lne.fr (A.D.)
 - ² Dipartimento di Chimica and NIS Inter-Department Centre, University of Torino, Via P. Giuria 7, 10125 Torino, Italy; francesco.pellegrino@unito.it (F.P.); valter.maurino@unito.it (V.M.)
 - ³ Academic Centre for Materials and Nanotechnology, AGH University of Science and Technology, Mickiewicza 30, 30-059 Krakow, Poland; ciosu@agh.edu.pl (G.C.); tokarski@agh.edu.pl (T.T.)
 - ⁴ Federal Institute for Materials Research and Testing (BAM), Unter den Eichen 44-46, 12205 Berlin, Germany; ch.salzmann@web.de (C.S.); dan.hodoroaba@bam.de (V.-D.H.)
 - ⁵ Physikalisch-Technische Bundesanstalt (PTB), Abbestraße 2–12, 10587 Berlin, Germany; jerome.deumer@ptb.de (J.D.); christian.gollwitzer@ptb.de (C.G.)
- * Correspondence: Loic.Crouzier@lne.fr

Citation: Crouzier, L.; Feltin, N.; Delvallée, A.; Pellegrino, F.; Maurino, V.; Cios, G.; Tokarski, T.; Salzmann, C.; Deumer, J.; Gollwitzer, C.; Hodoroaba, V.-D.; Correlative Analysis of the Dimensional Properties of Bipyramidal Titania Nanoparticles by Complementing Electron Microscopy with Other Methods. *Nanomaterials* **2021**, *11*, 3359. <https://doi.org/10.3390/nano11123359>

Academic Editor: David Marrero-López

Received: 30 September 2021
Accepted: 8 December 2021
Published: 10 December 2021

Publisher's Note: MDPI stays neutral with regard to jurisdictional claims in published maps and institutional affiliations.



Copyright: © 2021 by the author. Licensee MDPI, Basel, Switzerland. This article is an open access article distributed under the terms and conditions of the Creative Commons Attribution (CC BY) license (<https://creativecommons.org/licenses/by/4.0/>).

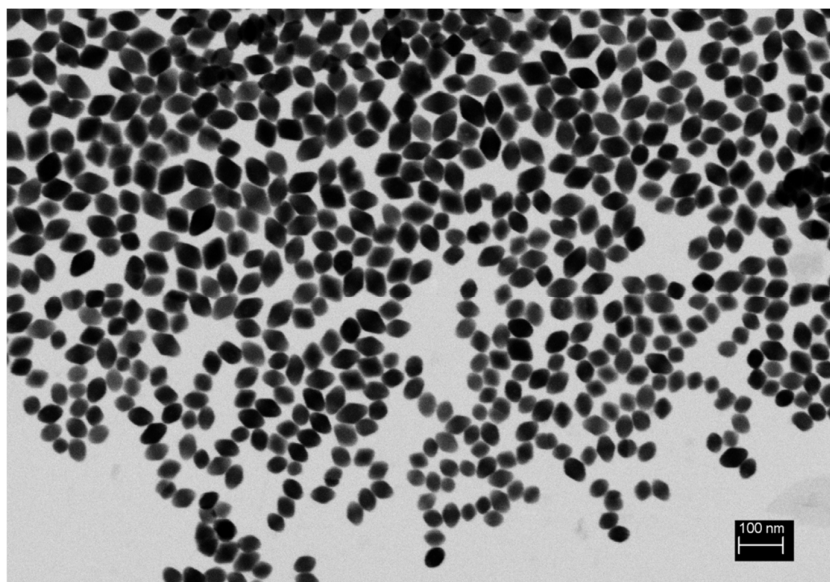


Figure S1. STEM-in-SEM image, taken at 20 kV, of the particles shown in Figure 3.

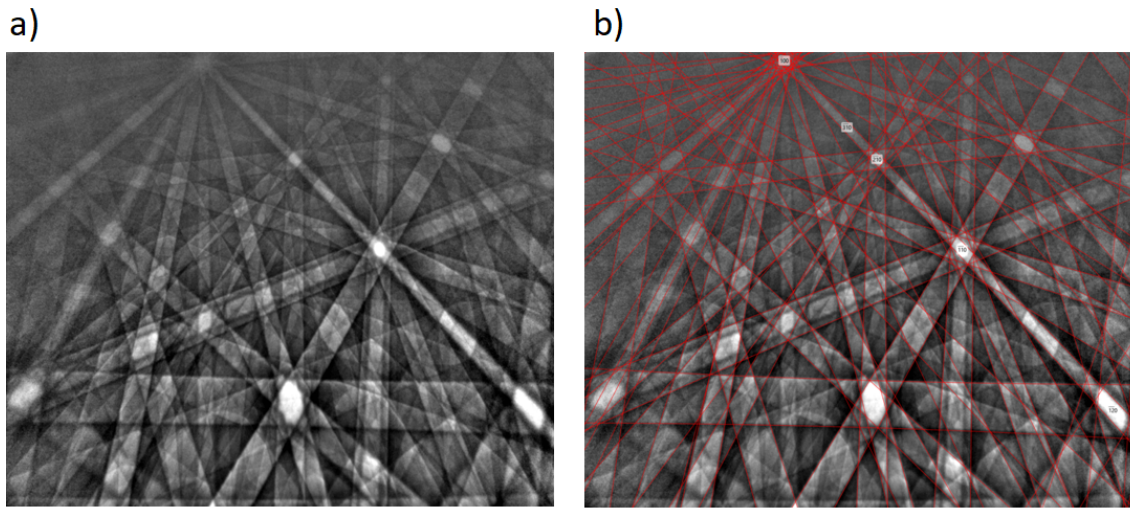


Figure S2. (a) Transmission Kikuchi diffraction pattern of anatase bipyramid nanoparticles and (b) indexed pattern with the Aztec acquisition software.

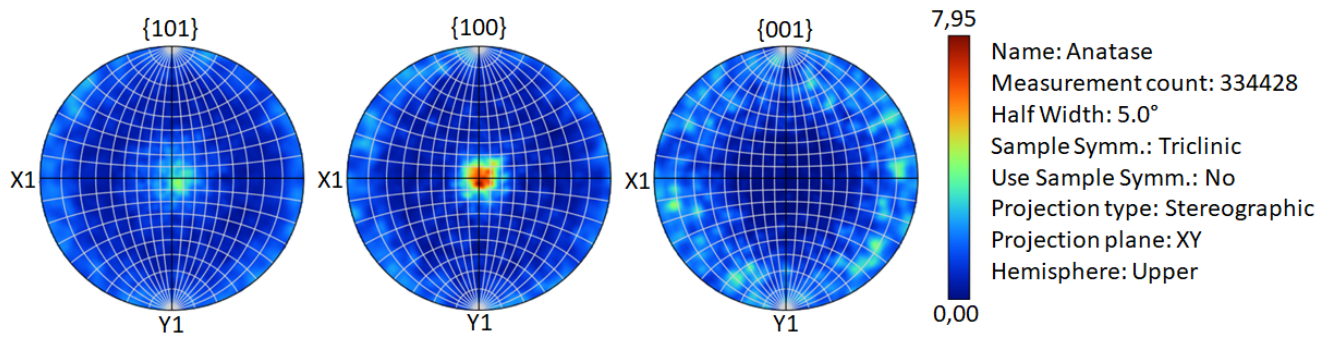


Figure S3. Pole figures of {101}, {100}, and {001} from the map presented in Figure 9.

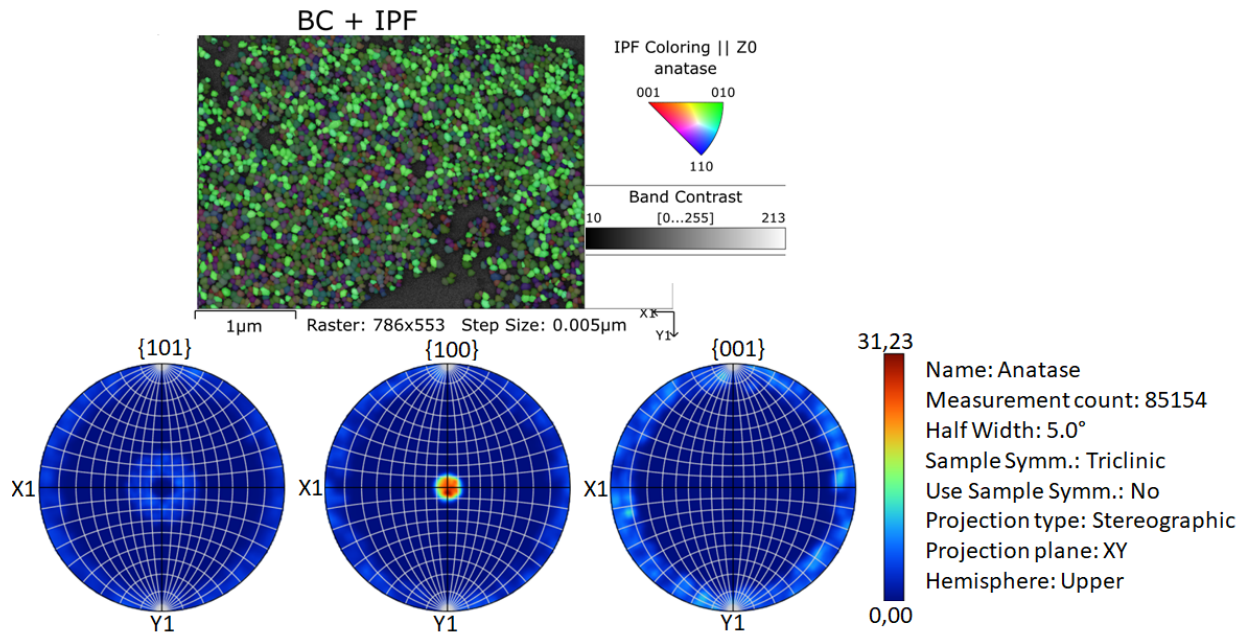


Figure S4. Highlighted particles lying on a {100} facet and their pole figures.

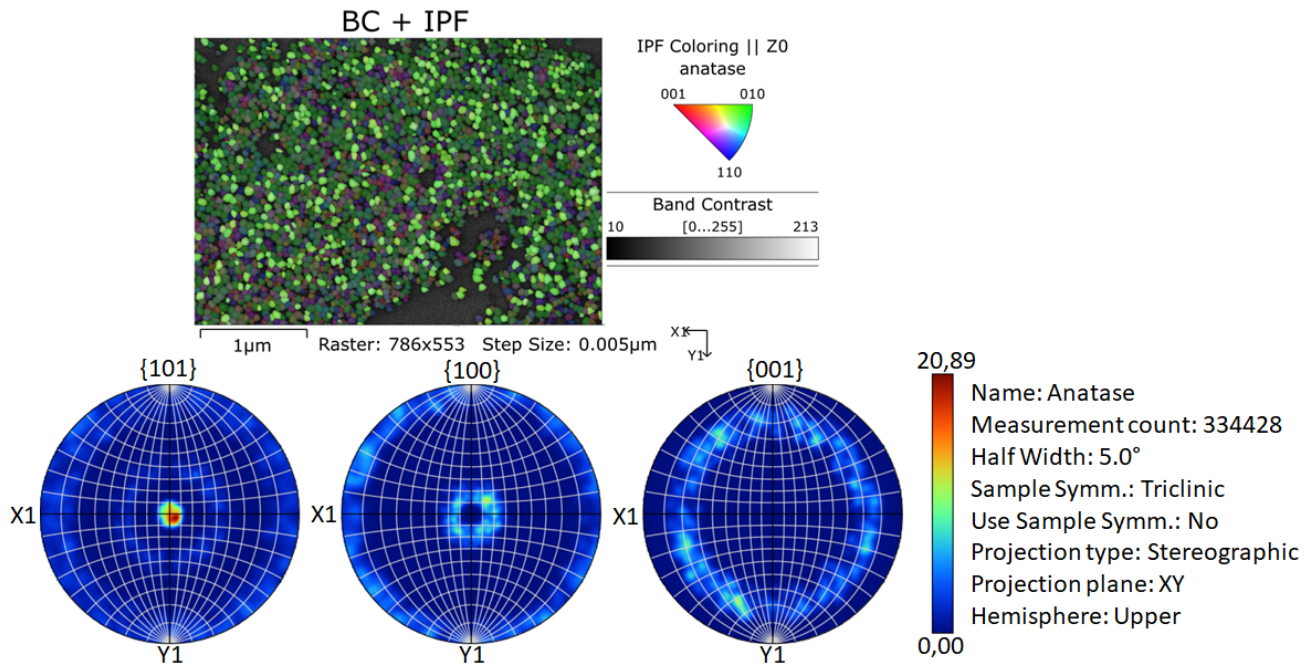


Figure S5. Highlighted particles lying on a {101} facet and their pole figures.

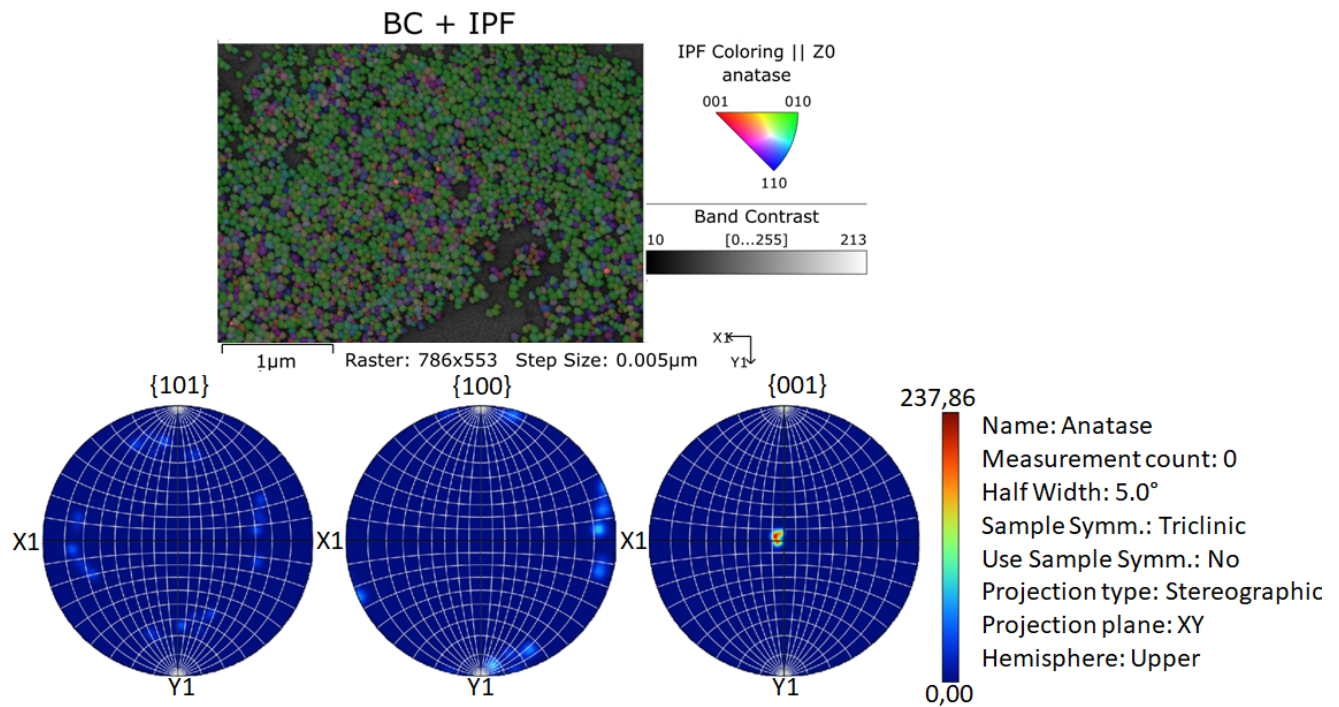


Figure S6. Highlighted particles lying on a {001} facet and their pole figures.

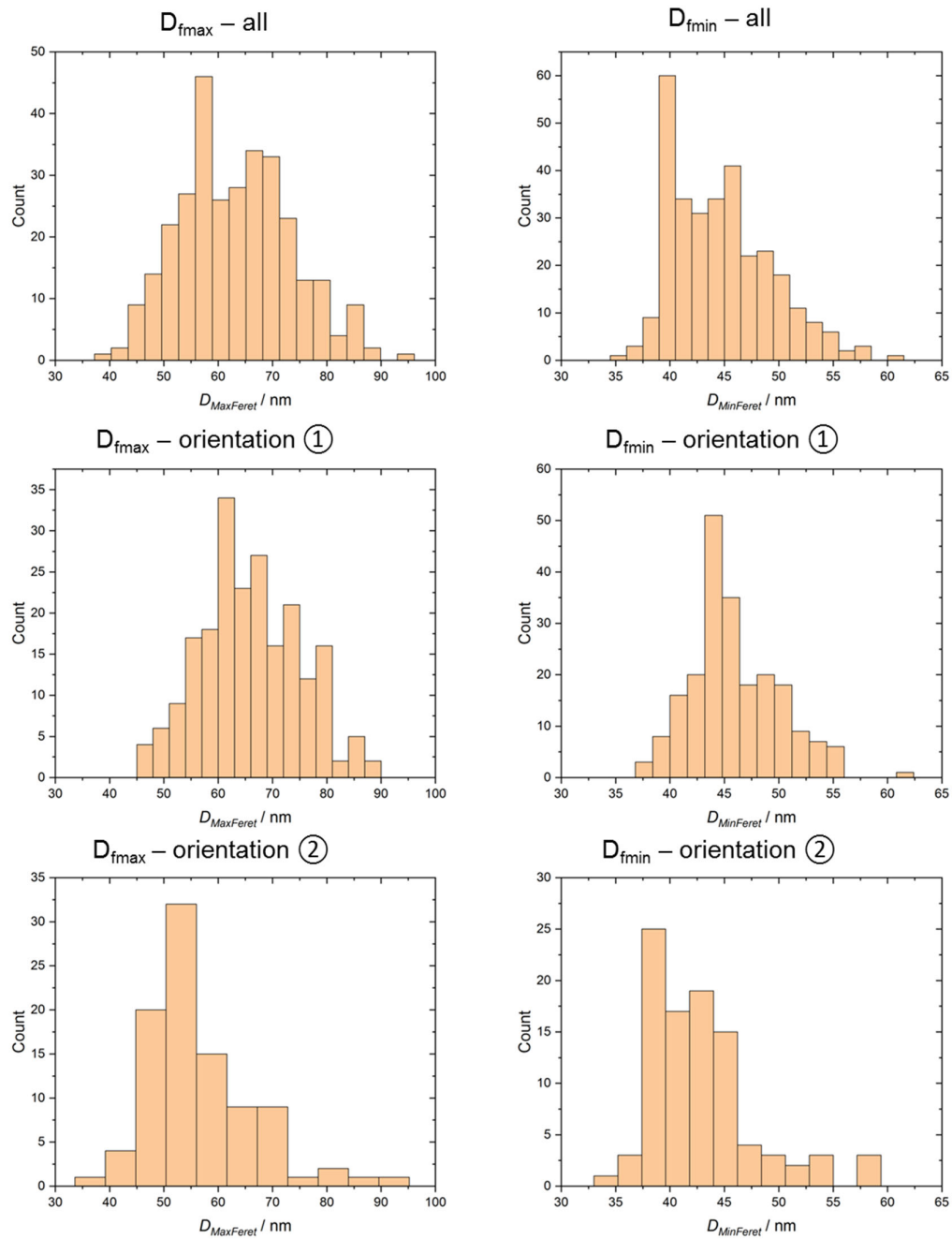


Figure S7. Dimensional parameters D_{eq} , D_{fmin} and D_{fmax} as measured by Zeiss-Ultra+ SEM for each NP population fraction with the orientations ① and ② from a total of 350 particles. The bin size of histograms depends on the number of nanoparticles involved.

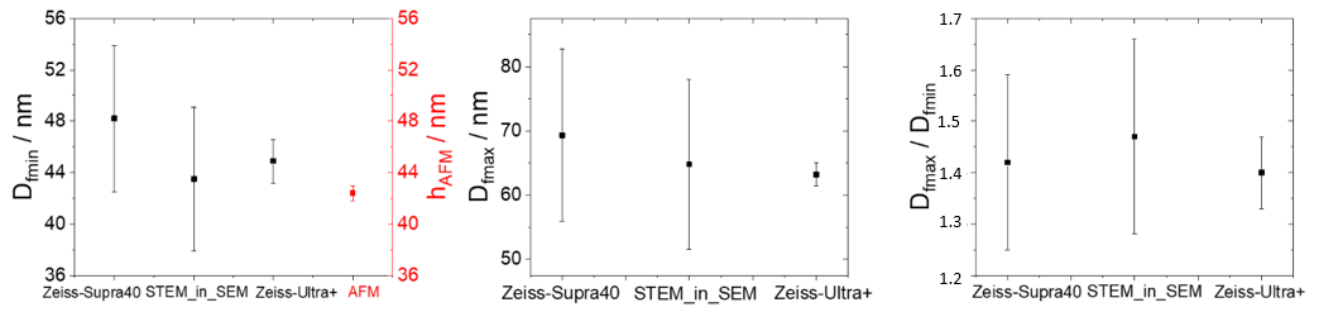


Figure S8. Results of D_{fmin} , D_{fmax} and D_{fmin}/D_{fmax} with their associated uncertainties for the Zeiss-Supra40 SEM, Zeiss-Supra40 STEM-in-SEM and Zeiss-Ultra+ SEM. The h_{AFM} measurements are compared to the D_{fmin} results in the figure on the left.