

Electronic supplementary material

Waste and Biomass Valorization, Springer

Potential use of incineration bottom ash in construction – Evaluation of the environmental impact

Ute Kalbe and Franz-Georg Simon

Bundesanstalt für Materialforschung und -prüfung (BAM), Unter den Eichen 87,
12205 Berlin, Germany

Corresponding author: ute.kalbe@bam.de

Table S1: Composition of artificial rainwater (AR)

| Substance | Concentration ($\mu\text{mol/L}$) |
|---|--|
| KCl | 40.0 |
| $\text{CaSO}_4 \cdot 2\text{H}_2\text{O}$ | 50.0 |
| NH_4Cl | 39.9 |
| NaNO_3 | 60.0 |
| $\text{MgSO}_4 \cdot 7\text{H}_2\text{O}$ | 10.0 |
| HNO_3 (63%) | 2.0 |
| pH | 5.7 |

Fig. S1: Concentrations of chloride and calcium in leachate fractions taken from two replicates of laboratory-scaled lysimeter experiments (Lys1, Lys2) at increasing L/S (liquid to solid) ratios

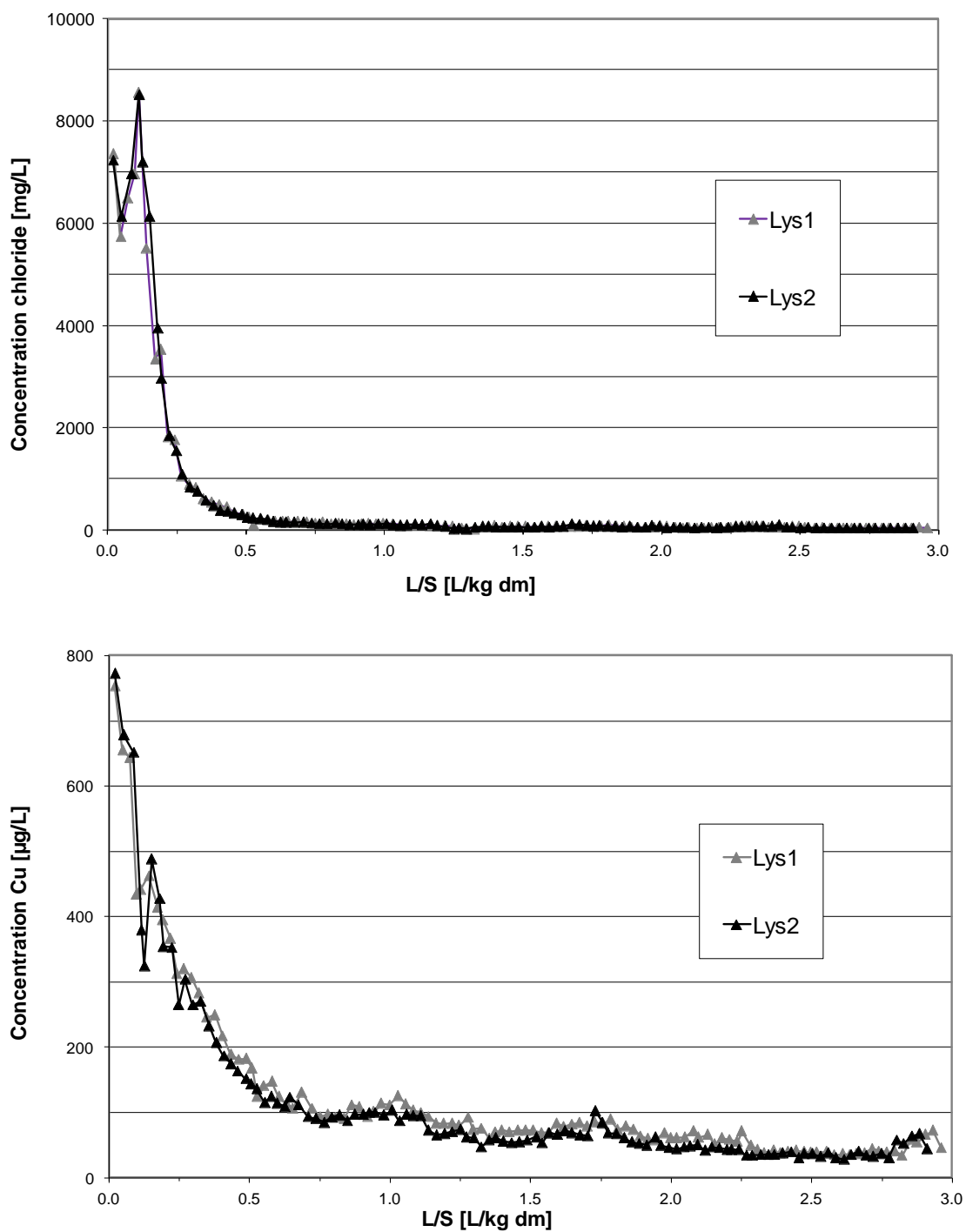


Fig. S2: Concentration of substances in eluate fractions taken from column percolation experiments (two replicates S1, S2) at increasing L/S ratios using demineralized water MilliQ) and artificial rain (AR) as eluent

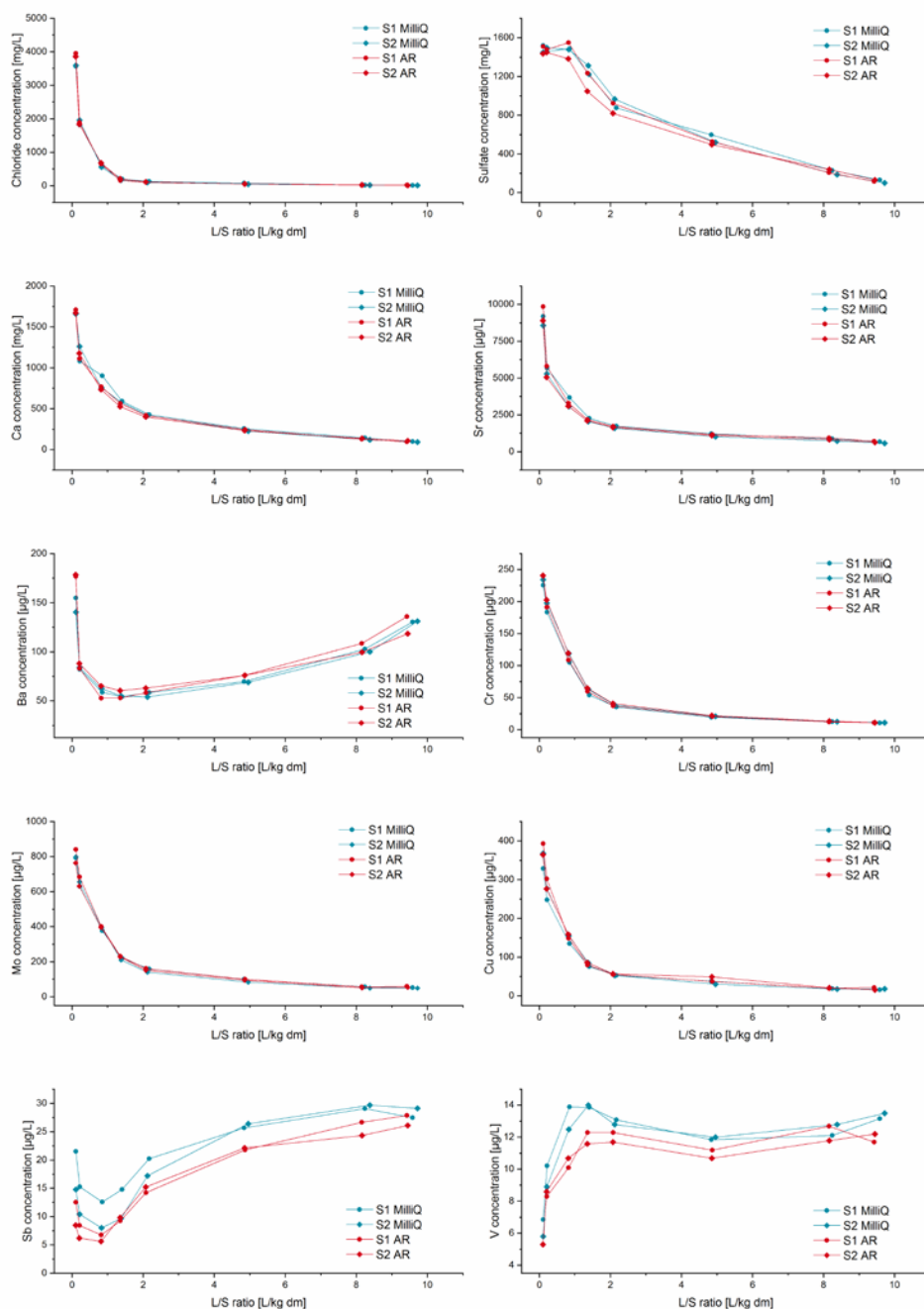


Figure S3: Cumulative release of substances as a function of L/S ratio in column percolation experiments (two replicates S1, S2) using demineralized water (MilliQ) and artificial rain (AR) as eluent

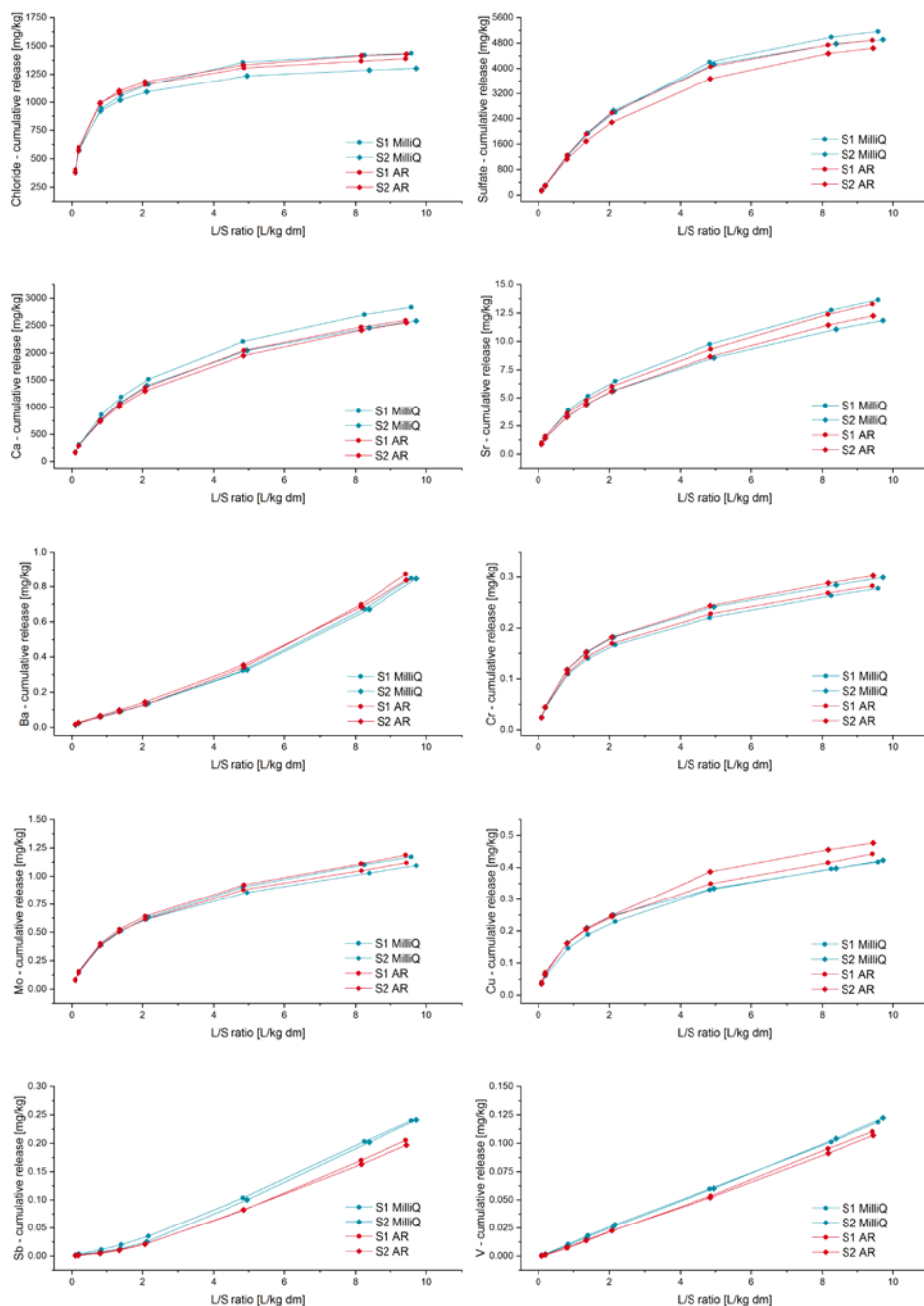


Fig. S4: Concentration of substances in eluate fractions taken at increasing L/S ratios in lysimeter experiments using artificial rain (AR) as eluent (two replicates Lys1, Lys2)

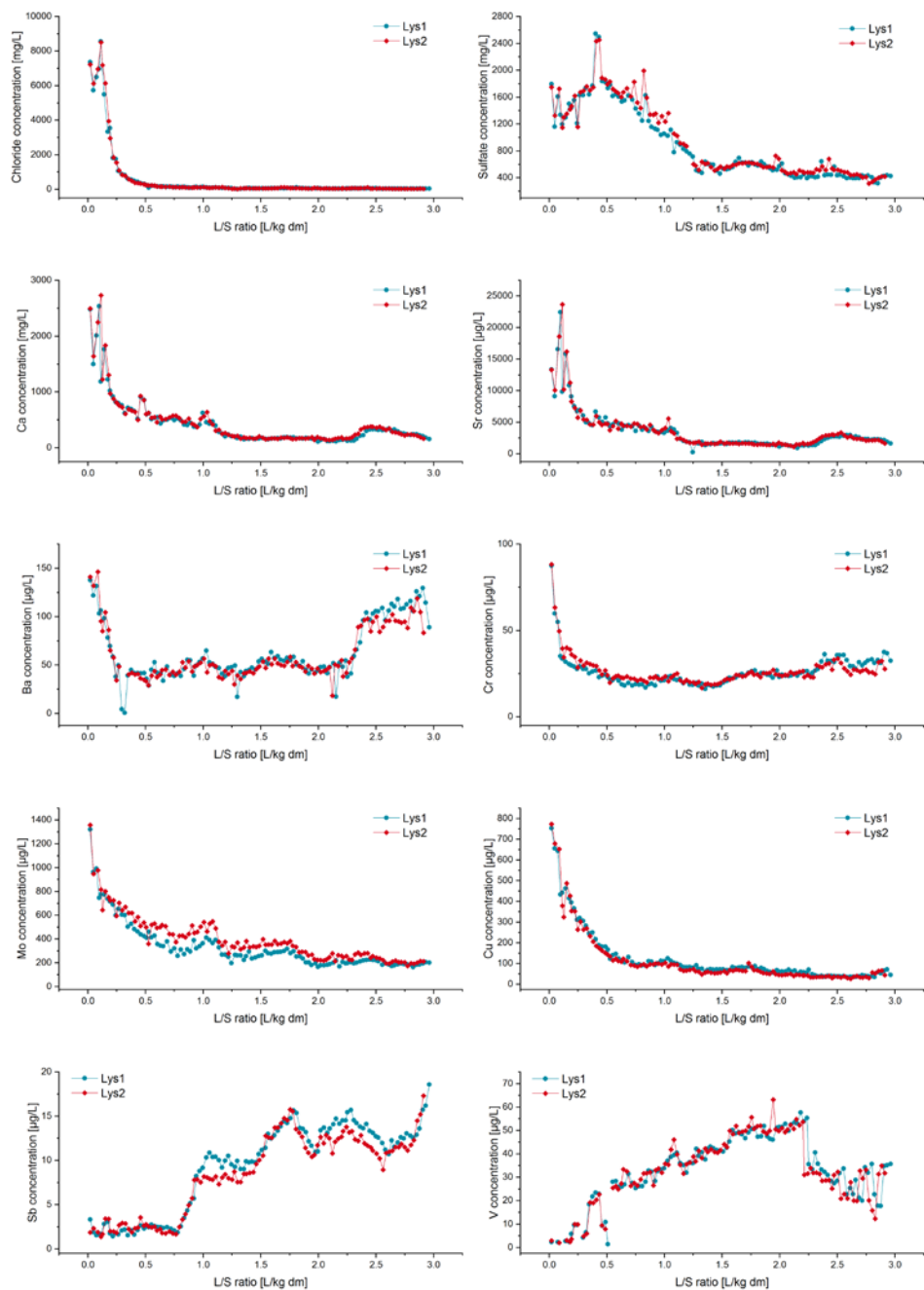


Fig. S5: Cumulative release of substances as a function of L/S ratio in a lysimeter experiments using artificial rain (AR) as eluent (two replicates Lys1, Lys2)

