

# Correction to “Determining the Thickness and Completeness of the Shell of Polymer Core–Shell Nanoparticles by X-ray Photoelectron Spectroscopy, Secondary Ion Mass Spectrometry, and Transmission Scanning Electron Microscopy”

Anja Müller, Thomas Heinrich, Sven Tougaard, Wolfgang S. M. Werner, Martin Hronek, Valentin Kunz, Jörg Radnik, Jörg M. Stockmann, Vasile-Dan Hodoroaba, Sigrid Benemann, Nithiya Nirmalanathan-Budau, Daniel Geißler, Katia Sparnacci, and Wolfgang E. S. Unger\*

*J. Phys. Chem. C* 2019, 123 (49), 29765–29775. DOI: 10.1021/acs.jpcc.9b09258

Cite This: *J. Phys. Chem. C* 2020, 124, 3923–3923

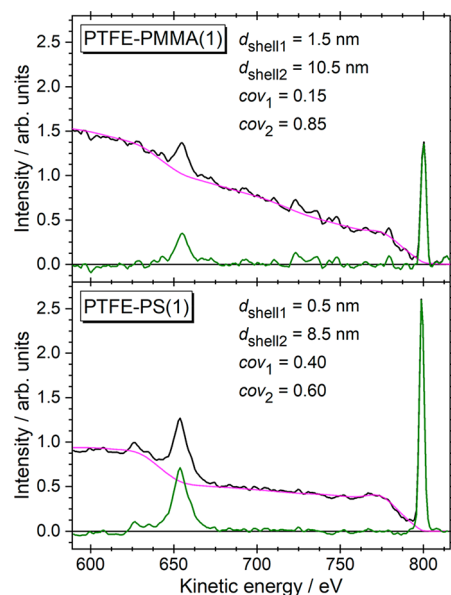
Read Online

ACCESS |

Metrics & More

Article Recommendations

Figure 4 does not show the inelastic background analysis as it is described in the paper. Here we provide the correct Figure 4.



**Figure 4.** XPS spectra from PTFE–PS(1) and PTFE–PMMA(1) in the energy region of the  $F_{KLL}$  Auger and F 1s peaks. The black plots are the experimental spectra after smoothing and subtraction of the inelastic background caused by photoelectron signals at higher kinetic energies. The purple lines are the fits from the QUASES software package. The green plots are the spectra after subtraction of the QUASES fit.

Published: January 30, 2020