

Supporting Information

Shape Engineered TiO₂ Nanoparticles in *Caenorhabditis elegans*: a Raman Imaging Based Approach to Assist Tissue-Specific Toxicological Studies

Luca Iannarelli^{a,b}, Andrea Mario Giovannozzi^a, Federica Morelli^c, Francesco Viscotti^c, Paolo Bigini^c, Valter Maurino^b, Giuseppe Spoto^b, Gianmario Martra^b, Erik Ortel^d, Vasile-Dan Hodoroaba^d Andrea Mario Rossi^{a,} and Luisa Diomedea^c*

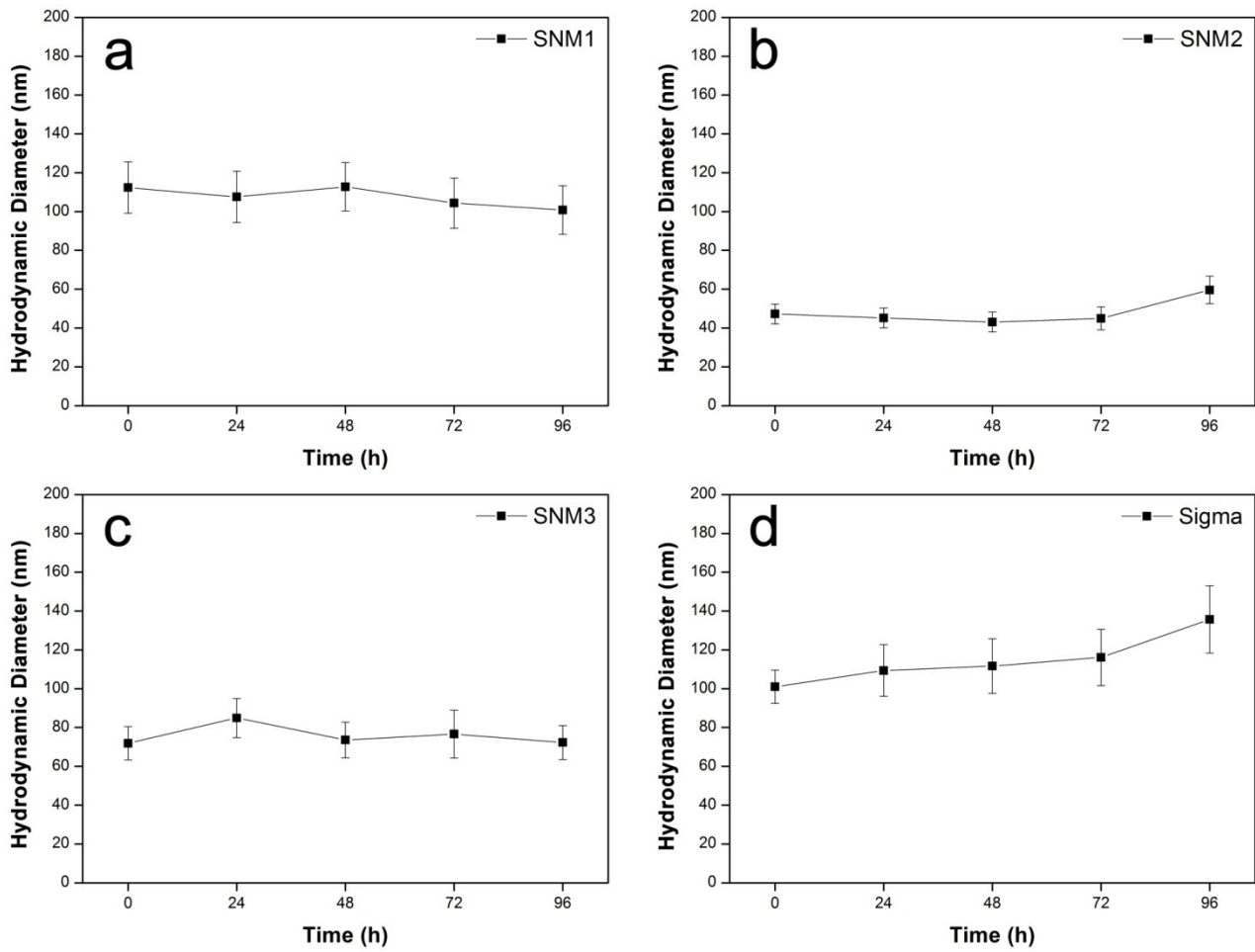
^aDepartment of Quality of Life, Food Metrology Group, INRiM, Strada delle Cacce, 10135, Turin, Italy

^bDepartment of Chemistry, University of Turin, Via Giuria 7, 10125, Turin, Italy

^cDepartment of Molecular Biochemistry and Pharmacology, IRCCS-Istituto di Ricerche Farmacologiche “Mario Negri”, Via G. La Masa 19, 20126, Milan, Italy

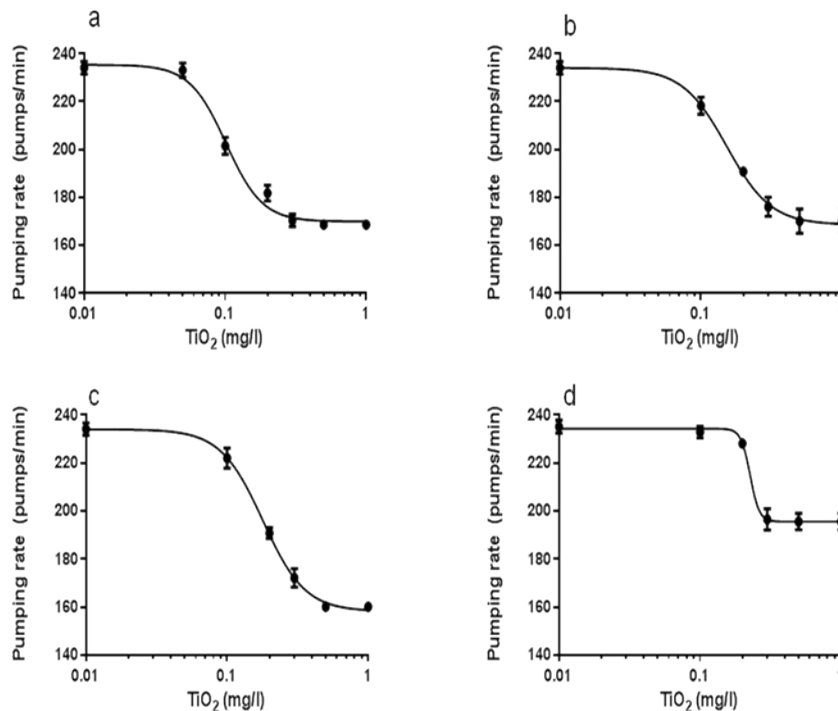
^dSurface Analysis and Interfacial Chemistry division, Federal Institute for Materials Research & Testing (BAM), 12200, Berlin, Germany

Stability of TiO₂ NPs dispersions



Supporting Figure 1: Hydrodynamic diameter of SNM1(a), SNM2 (b), SNM3 (c) and Sigma (d) dispersions obtained from DLS analysis over a period of 0 h, 24 h, 48 h, 72 h and 96 h.

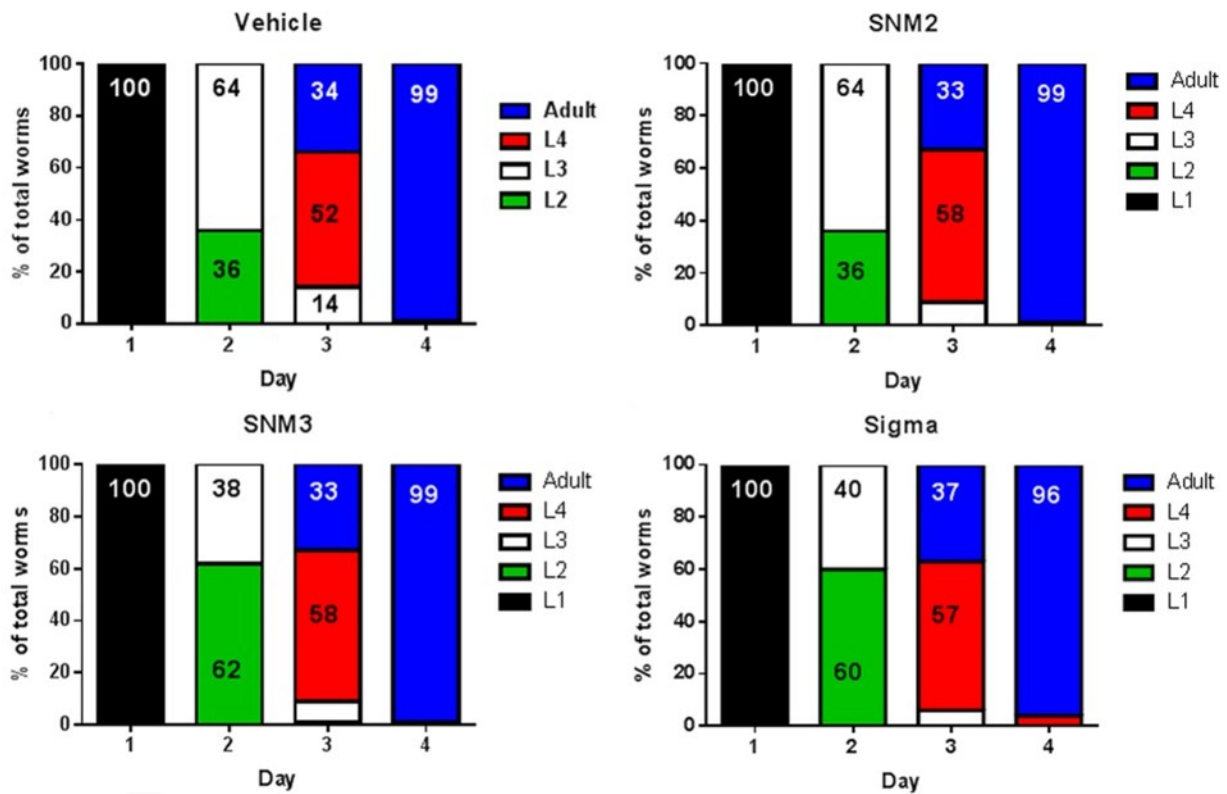
Dose- response test



Nanoparticles	EC ₅₀ (mg/l) ± SE	Bottom value (pumps/min) ± SE
SNM1	0.101 ± 0.10 *	169.9 ± 2.4
SNM2	0.179 ± 0.11	158.3 ± 4.3
SNM3	0.152 ± 0.11	168.6 ± 4.2
Sigma 2	0.227 ± 0.10	195.6 ± 2.7 *

Supporting Figure 2: Dose-response effect of different TiO₂ NPs on the pharyngeal motility of N2 worms. Nematodes (100 worms/100 μl) fed for 2 h with 0.01 mg/l - 1.0 mg/l NPs suspended in distilled water in the absence of OP50 *E. coli* were then plated on Nematode Growth Media plates seeded with the bacteria. Control worms received distilled water alone (Vehicle). Pharyngeal pumping was scored 2h after plating. NPs dose-dependently reduced the pharyngeal pumping of worms (a, SNM1; b, SNM2; c, SNM3; d, Sigma). (e) IC₅₀ indicated a significantly higher maximal effect for Sigma NPs than the others. Data are expressed as the mean ± standard error (SE). *p < 0.05 vs. SNM1, SNM2 and SNM3 according one-way ANOVA and Bonferroni *post hoc* test.

Larval Growth Test



Supporting Figure 3: (a-d) L1 larval nematodes (100/plate), from eggs laid by worms fed NPs, were plated on fresh NMG plates seeded with OP50 for food (day 1). Larval growth was rated by counting 13, 22 and 40 and 66 h after plating of L1, worms at L2, L3, L4 and adult stages, on day 2, 3 and 4. Data are percentages of the total worms.